

## In This Issue



Guest Editorial .....	2
President's Column .....	3
Op-Ed .....	6
Washington Monitor .....	7
Members of Note .....	10
Of Note .....	11
Specialty Group News .....	12
Grants & Awards	
Received .....	13
Award Deadlines .....	15
New Appointments .....	15
AAG Elections .....	16
Call for Papers .....	24
Jobs in Geography .....	26
Necrology .....	46
Events Calendar .....	47

## Carol Harden to Address Human-Environment Interactions

In her upcoming Past President's Address at the 2011 Annual Meeting, Carol Harden will examine how, over time, geographers have changed the ways in which they frame studies of the complex interrelationships that link people and places. "Framing and Re-framing Questions of Human-Environment Interactions" will build on Mel Marcus' 1979 AAG presidential address by reviewing and extending the history of physical geography over the past century.

Recent recognition of profound and widespread environmental change has brought human-environment interactions back onto center stage. Although physical geographers have a strong tradition of studying the impacts of human actions on the environment, Harden will suggest that, after having once ventured too far down the paths of environmental determinism and social Darwinism, geography as a whole has done too little to advance understanding of the feedbacks through which the environment influences the options and decisions of people and societies. Harden will use examples

from her research in the Andes to illustrate feedbacks between humans and their environments and to emphasize that the atmosphere is only one aspect of the interactive, human-environment system undergoing change.



Harden

Harden notes that at least seven of the eleven strategic questions posed in the 2010 National Research Council report, "Understanding the Changing Planet: Strategic Directions for the Geographical Sciences," are positioned in realms of importance and overlap between human and physical geographers. Given the broader context of rapidly growing and urbanizing human populations, she will challenge geographers of all stripes

to bring their collective expertise to the core realm of geography to address important new questions regarding human-environment interactions in our rapidly changing world.

The Past President's Address will take place at 6:30pm on Thursday, April 14, 2011, at the AAG Annual Meeting in Seattle. See [www.aag.org/annualmeeting](http://www.aag.org/annualmeeting) for details and to register. ■

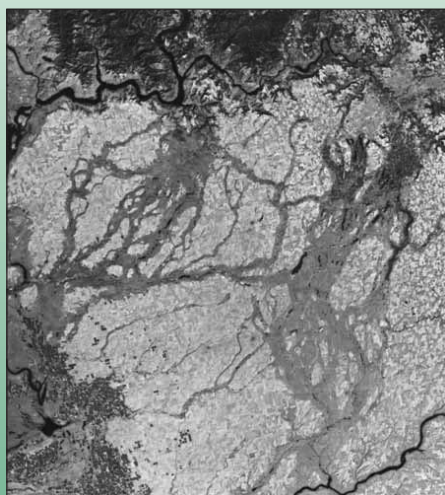
## Ice Age Floods in the Pacific Northwest

The Pacific Northwest site of the 2011 AAG Annual Meeting, April 12-16, in Seattle, long celebrated for its pleasing landscapes, from lush rain forest on the Olympic Peninsula to the snow-capped peaks of the Cascade Mountains to the gently rolling hills of the eastern Palouse. And then there are the Channeled Scablands. The unsuspecting visitor might well suspect he or she had just landed on Mars.

### A Tortured Landscape

Characterized by a land surface scraped clean down to the bedrock, abrupt and jagged canyons, ghostly waterfalls with no water, bizarre errant boulders, gargantuan ripple marks, and a few scraggy pine trees hanging on for dear life—rarely the stuff of tourist brochures—they are possibly the most unique and dramatic landforms in the entire state, if not the hemisphere. The

*Continued on page 8*



CREDIT: USGS/LANDSAT

The dark braided pattern depicts the pathways of a gigantic ice age flood across more than 13,000 square miles of what is today western Washington.

**AAG Election Issue—see pages 16–25 for Candidates.**

Ballots must be received by February 24, 2011

**AAG Newsletter  
of the  
Association of American  
Geographers**

Douglas Richardson, Publisher  
and Managing Editor

Jim Ketchum, Editor

AAG Voice 202-234-1450

AAG Fax 202-234-2744

newsletter@aag.org

www.aag.org

USPS 987-380 ISSN 0275-3995

The AAG Newsletter ISSN 0275-3995 is published monthly with July/August combined, by the Association of American Geographers, 1710 16th Street NW, Washington, DC 20009-3198. The cost of an annual subscription is \$25.00. The subscription price is included in the annual dues of the Association. Not available to non-members. Periodicals postage paid in Washington, DC. All news items and letters, including job listings, should be sent to the Editor at the address below or to newsletter@aag.org.

All Newsletter materials must arrive at the Association office by the 1st of the month preceding the month of the publication. This includes job listings. Material will be published on a space available basis and at the discretion of the editorial staff.

When your address changes, please notify the Association office immediately. Six weeks notice is necessary to ensure uninterrupted delivery of AAG publications. To assist the AAG office in your address change, include the address label with your change of address.

Postmaster: Send address changes to AAG Newsletter, 1710 16th Street NW, Washington, DC 20009-3198, or address@aag.org.

*Executive Director's Note: The AAG long has been fending off lobbying and litigation activity by some licensed surveying and engineering firms (e.g., MAPPs vs. United States) who claim that only they should be able to conduct most mapping and GIS activity, despite the fact that geographers and others have long led the development of GIS and related geospatial technologies, and have been doing mapping for centuries and GIS for decades. (See my AAG Newsletter columns, "The Plan to Hijack Mapping," March 2007; and "Mapping Procurement Practices—Best and Worst," February 2010, for background on these issues.) So I thought it was refreshing to see a recent frank editorial by Al Butler in the Professional Surveyor Magazine that provides some common sense on the issue. I hope you enjoy Al's column.*

*As always, I want to emphasize that the AAG warmly welcomes the participation of surveyors and engineers in the GIS and mapping worlds, as we always have in the past. However, we simply do not agree with their recent efforts to exclude geographers and others from the same mapping and GIS fields that we have for so long practiced and pioneered.*

—Doug Richardson

## You Won't Like This

By J. Allison Butler, GISP, AICP

Reprinted with permission of the Professional Surveyor Magazine,  
October 2010 issue. [www.profsurv.com](http://www.profsurv.com).

**N**o one is going to like this article, but everyone should read it. After reading many other writers opine on the various ways the surveying profession is under attack—from the average age of licensed surveyors being 57 years old to the need to keep those GIS people out of our business—I want to be the first to tell you: The surveying profession no longer exists.

Yes, there are still state regulatory agencies and licensed practitioners, but the profession of surveying has been absorbed into something much larger: the geospatial profession, which includes boundary surveying, GPS data collection, photogrammetry, mapping, and all the other things that we have spent the last 20 years arguing about in order to define their various boundaries. The fact is we've been having such a hard time defining those boundaries because they don't exist.

Before you put the tar on to boil and start tearing into your feathered pillows, let me also say that the specialized knowledge, skills, and abilities traditionally included in the practice of surveying are still very much needed. Surveyors are not this century's buggy-whip makers. The problem is that many of the skills that have traditionally defined the surveying profession

are no longer uniquely identifiable with that profession, which is why we have the boundary problem.

Define surveying as the profession that makes accurate measurements, and you find that technology now allows almost everyone with a little skill and knowledge to be able to make accurate measurements. Just this month I read several articles in various geospatial magazines covering what used to be the surveying, photogrammetry, and GIS professions where non-surveyors have compiled data with millimeter accuracy, all using essentially the same technology. Each group seemed to do equally well. Just as surveying professionals are beginning to use many tools previously employed only by GIS and photogrammetry professionals, GIS people are having to learn techniques employed by surveyors, such as error detection and remediation.

Raise that tired, old argument about surveyors upholding "public welfare and safety" as the ultimate argument for state licensure, and I will just have to say, "Oh, puhleeze!" GIS providers and users make many more decisions that affect the public than do surveyors. GIS folks create all those maps used by in-car navigation systems, compile the official census, use

Continued on page 4

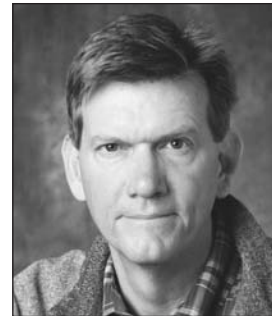
## A Sabbatical for Doug Richardson

At its last meeting the AAG Council voted unanimously to award executive director Doug Richardson a six month sabbatical during 2011 in recognition of his outstanding leadership and commitment to the Association. Since becoming executive director in January 2003, Doug has worked tirelessly and without any substantial break or vacation on a remarkable range of projects and special initiatives which have had a dramatic effect on the intellectual vitality of our discipline and financial health of our association. At the recent Council meeting Doug also agreed to continue as executive director of the AAG for at least five more years. The Council felt very strongly that a sabbatical was long overdue both as an affirmation of what Doug has achieved to date and as an investment in his vision and leadership for the future. The sabbatical will give Doug time for some of his own research and writing projects, as well as a break from the demanding work pace he maintains on behalf of our membership.

I cannot emphasize enough how much Doug has accomplished. I was serving as a national councillor when Doug was appointed as executive director and have had the opportunity to work with him on a number of projects. Perhaps Doug's greatest strength as a leader has been his ability to foster innovative projects not just in one or two areas, but across the entire discipline in research, education, service, outreach, and policy. He has a broad vision of the important roles geography can play in science, scholarship, government, business, education and society. This vision and a genuine passion for geography have produced exceptional results, not the least being the open, inclusive and welcoming atmosphere he has created within the AAG in support of scientific and humanistic intellectual exchange across all our many subfields.

Although I can't possibly list all that Doug has accomplished during in his eight-year tenure, I can draw attention to some of the most recent and important projects:

- The new *International Encyclopedia of Geography, People, the Earth, Environment, and Technology*, which Doug has negotiated with Wiley-Blackwell. This fifteen volume, five million word project will, I think, be one of the most ambitious and potentially far-reaching publication projects in the discipline. Its influence will last for years to come and its writing will serve as an important community-building project, both nationally and internationally.
- The growing membership of the Association—now at about 11,000 when membership is down among other associations due to the recession.
- The success of recent annual meetings. These have been exciting, interactive events with many high-profile presentations and thematic tracks which draw large national and international participation. The meeting last spring was particularly notable for the presentation of the first Atlas Award to Dr. Jane Goodall and the reception hosted by Turkish Prime Minister Recep Erdoğan.
- The continuing success and impact of the *Annals* and *Professional Geographer*, particularly the new special issues of the *Annals* and the increase in pages published annually, essentially an increase from 4 to 6 in the number of *Annals* issues per year. The ten-year contract Doug negotiated with Taylor and Francis assures a firm financial foundation for our publications for years to come.
- The network of productive contacts Doug has established in Washington, DC, in support of the AAG's mission with organizations such as AAAS, the Library of Congress (including finalizing the archiving and digitization of Wes & Nancy Dow's "Geographers on Film" project), NSF, NIH, COSSA, NAS, NGS, NEH, and other key organizations.



Footnote

- The international projects Doug has cultivated particularly in support of geographical scholarship and education in developing regions of the world, as evidenced in programs such as the AAG Developing Regions Membership Program, and the establishment of an extensive new network of collaborative AAG projects and programs throughout Africa, Latin America, and Asia, while also maintaining AAG's traditional scholarly ties in Europe and North America.
  - The high quality of the staff Doug has recruited in support of current and future projects. The AAG now has the capacity to undertake research and service projects on a scale never before possible.
- The attention Doug and the Meridian Place staff have focused on important policy issues, such as the "Blueprint for Geography Education" and the AAG resolution on K-12 geography education, his effective promotion of research funding for geography, and his leadership roles in the creation and ongoing development of the AAAS Science and Human Rights Coalition.
- Doug has the ability and contacts to reach out fluently and effectively across disciplines and sectors to engage the larger intellectual community at the highest levels on behalf of geography. From GIScience to "Geography and the Humanities" he has forged strategic AAG research initiatives and institutional relationships which are now opening new doors for research and collaboration for all geographers.

Perhaps surpassing all of these accomplishments is Doug's financial stewardship of the AAG. Even during these poor economic times, Doug's outstanding financial and management skills have not only enabled the AAG to weather the

*Continued on page 5*



From the Meridian—Guest Editorial from page 2

terrestrial photogrammetry to map crime scenes, forecast the weather for tomorrow on television, guide satellites to Mars, and chart the path of Predator drones in Iraq. A lot of GIS people still have to make their tools, although that situation is getting better. Some of these people may not know what they are doing and make mistakes.

Making everyone have a license doesn't fix that. Licensed people make mistakes, too. Just ask me about the boundary retracement survey I had done because we found four pins set at each of the corners of a lot less than 50-feet wide, all from the same company and put in place over a series of about five years as the property went through a series of foreclosures. It's not just me. Surveying magazines routinely carry stories about how surveyors ignore the basic rule of retracements—walk in the original surveyor's shoes—and use math and science to do it the way it should have been done. Only that's not the way it is supposed to be done.

We need to embrace the future, not fight it. What we are suffering from are the five stages of grief (Elisabeth Kübler-Ross, *On Death and Dying*). We have been through the first four:

1. **Denial** (surveying is a long-lived profession the public can't do without)
2. **Anger** (those darn GIS people are ruining our business; we need to bring photogrammetry under surveying)
3. **Bargaining** (if only we could adopt the NCEES Model Law and Rules, raise minimum education requirements, eliminate price-based procurements, or [insert your favorite idea here], then things would be great)
4. **Depression** (average age of licensed surveyors is 57, which makes me average)

This leaves the last stage: **Acceptance**. Only with acceptance of the fact that the surveying profession, as a clearly identifiable way of life, has come to an end can we move forward to the new future we all must face. Now everyone has to know everything. GIS people have to understand their data, including the data they get from

surveyors and photogrammetrists. And I'm not talking about book knowledge. I'm talking about real, on-the-street knowledge, because the universal truth of the GIS business is that the best data is the data you have. GIS people re-enact MacGyver episodes every day, just like surveyors who deal with all kinds of conflicting information have to make "informed judgments." We're all the same.

Acceptance means more than just acknowledging that the surveying profession needs to transform into something else, something bigger. It means embracing as part of the new profession those things that have been seen as less than surveying, like what is often referred to as "map-quality" data collection. It means consolidating all these artificially separated professions—surveying, photogrammetry, and GIS—into a single geospatial profession. It means all of us need to get together right now and decide collectively what this new profession needs to be. We're all in this together.

It also means moving these professions beyond state licensure regulations and into the realm of interstate commerce. You can strongly disagree with everything else I have said and you will still have to acknowledge that we absolutely do not need more than 50 different definitions of our collective geospatial profession. We cannot trust our livelihood to the whims of the political process. We need to collectively define our entire profession and recognize that most of the products generated by the members of that profession are part of interstate commerce. Our profession is now too big for state regulation. Or would you prefer that the maps stored in your GPS had to meet different requirements in each state?

Of course, the converse is that I must acknowledge all the things we do that relate to the property laws and court precedents of the individual states. These things need to be addressed. But that part of surveying, while representing a majority of the work performed by many of us, also represents

only a small part of the broad geospatial field. Everything else is pure science and math. Why the heck should we have state legislatures regulating science and math? Why should we allow state regulatory restrictions to keep us from being able to practice in adjacent jurisdictions?

Let me put it to you another way: Given the level of automation many of these data

collection systems provide, which person in the chain needs to be the state-licensed surveyor? The one flying the plane, the people who write the computer programs, the person who runs the data through the software, or the one who compiles the results? I say the answer is, "None of the above," not because this work doesn't need to be done

properly, but because the science doesn't vary from state to state.

Consider this example. I am a licensed building contractor in Florida, the poster child (state) for the construction industry with the toughest licensing laws in the country. The licensing test takes 20 hours spread over two days and has a pass rate of less than 40 percent. It covers topics such as how to run a business, handle payroll taxes, get workers' compensation insurance, deal with banks, create balance sheets, organize an office, draft and follow contracts, and create price proposals. Oh, there are a few questions on how to build things, but you could miss every one of those questions and still pass easily.

Why is the test structured this way? Because the state's biggest fear is that a contractor will take your money and go broke. If a contractor can't comply with the building code, the inspectors will find it and stop the project before it gets so far as to hurt someone. If the finished work doesn't look good, they won't get paid. The state focuses on the things that don't have checks and balances. Maybe something like that would work for surveying products.

Many of us practice in interstate commerce already by using satellite and aerial



Butler

Continued on page 5

# Digitally Mapping the Republic of Letters

Stanford University humanities professors Dan Edelstein and Paula Findlen are currently working with academic technology specialist Nicole Coleman and other colleagues to map the flow of tens of thousands of letters across Europe sent by key Enlightenment thinkers during the eighteenth century. By utilizing the power of new digital technologies and geographic imaging, their project seeks to examine the social networks through which ideas traveled and gain new insights into the intricacies of the Enlightenment's evolving intellectual geography.

What's significant about the project, says Edelstein, is that mapping the flows of this enormous amount of correspondence allows researchers the opportunity to gain new

understandings of "not only how these networks intermingled, but how they evolved over time."

The project "Mapping the Republic of Letters" is an example of the extent to which geographic technologies and perspectives are being embraced across the humanities in ways that equip scholars to ask new questions about traditional subjects by mining vast datasets in previously unimaginable ways. Voltaire's correspondence alone numbers more than 18,000 individual pieces and, in print, takes up 15 volumes. One application of this project allows users to see the volume and direction of one writer's letters and compare it to that of another writer, and to see how

the flow of these correspondences changes across time.

Dr. Edelstein discusses the project in a brief video at <http://shc.stanford.edu/intellectual-life/video-podcasts/detail/tracking-18th-century-social-network-through-letters>.

More about "Mapping the Republic of Letters" may be found at <http://republicofletters.stanford.edu/>, including a series of interactive maps.

"Geography and the Humanities" will be a featured topic at the Association of American Geographers (AAG) upcoming Annual Meeting, to be held in Seattle, April 12-16, 2011. For more on the 2011 AAG Annual Meeting see [www.aag.org/annualmeeting](http://www.aag.org/annualmeeting). ■

*From the Meridian—Guest Editorial from page 4*

photography and other forms of remote sensing compiled across large regions. We use our new GPS units as we drive across state lines on vacation. We use Google Earth, or we sell the maps and aerial photos to Google. Lots of people are checking the product every day. Screw up much and people stop paying you. That's a pretty good check-and-balance component.

Property boundary surveys may need more regulation, because the average consumer may not be able to tell whether it was done properly. Perhaps the construction industry offers a solution here, too, something like a state certified plat inspector to review the survey products before they are filed at the courthouse.

What I am really saying is that we need to quit worrying about something that might happen because it already has happened. The surveying profession, as it was defined 20 years ago, is gone. It is now part of something bigger: the geospatial profession. This is a good thing for those of us who have seen a shrinking marketplace and declining revenues. We now have a big world open before us, a new world where we can define who we are, what we do, and how it should be done. Change is hard, but the world is going to change whether we want it to or not. We will change with it or go extinct. It's your choice whether you want to be a dinosaur or a bird.

In my opinion, an early step is to declare that most of what we do is part of interstate

commerce and should not be subject to state regulation. Math and science, and the technology and methods based on them, are not different in each jurisdiction. It seems reasonable for each state to declare what it wants on a boundary survey or other legal documents, but everything else should be for the geospatial profession to declare. That means you and me.

Let's get started defining our future. Agree or disagree, I want to hear from you. We need to talk. ■

*Al Butler is capital program manager for Ocoee, Florida and operates a part-time GIS consulting business. He is past-president of the GIS Certification Institute.*

*President's Column from page 3*

current recession (while other associations are cutting programs and staff), but to actually improve and expand the level and quality of AAG services, programs, and projects without increasing the cost to members. Additionally, through his determined development and careful shepherding of our assets, Doug has been able to continue building the AAG's Endowment Fund for Geography's Future while many other organizations' endowments have been falling.

Although Doug has not yet worked out all the details of his sabbatical, it is likely to begin in May just after the Seattle annual meeting and run into the fall. This means that he will be on duty as usual during the busy spring and fall seasons. Doug also is preparing the AAG staff for his time away in advance by rescheduling several critical AAG functions for completion prior to or after his sabbatical, and will work to ensure that his remaining responsibilities at Meridian Place will be covered by his senior staff

with perhaps some assistance, as needed, by members of the executive committee. We will make every effort to ensure that the AAG's many initiatives and programs continue seamlessly during Doug's sabbatical. In the meantime, I hope you will join me in thanking Doug for all he has done for the AAG and for his decision to continue as executive director. ■

Ken Foote  
k.foote@colorado.edu

## The Cancún Agreement

Last year in Copenhagen, despite high expectations for a political solution to control international levels of greenhouse gas emissions (GHGe), negotiations broke down and produced a weak general statement referred to as the Copenhagen Accord. On November 29, 2010 the United Nations Framework Convention on Climate Change (UNFCCC) reconvened for the 16th time representatives from 193 countries to try again, this time in Cancún, Mexico. In all, over 11,000 people participated in the two-week conference that was part high level diplomatic negotiation, trade show, grassroots appeals, and media circus. Among them were five observers representing the AAG. In the end, the Cancún Agreement formalized much of what was spelled out more broadly in the Copenhagen Accord a year earlier including national pledges for GHGe reductions from the world's most developed economies, the creation of a Green Climate Fund to aid developing nations hit hardest by changing conditions, and provisions for the world's rich to pay poorer countries to reduce emissions from deforestation and forest degradation (REDD). The fate of the Kyoto Protocol remains unclear and has been deferred to next year's meeting of the UNFCCC in Durban, South Africa.

While Cancún generally conjures images of rowdy youth and spring break, the mood in the city over the two week duration of the 16th Conference of the Parties (COP16) was subdued, hopeful, and anxious. Despite the distrust and disappointment arising out of the Copenhagen talks, the final days at Cancún did yield tangible results, with further commitments of funds from Annex I to less developed countries (known as the Green Climate Fund) and the consensus that global temperature increases need to be limited to 2 degrees Celsius. As Todd Stern, the senior U.S. climate negotiator stated, "ideas that were skeletal last year and not approved were

elaborated and approved." For the world, this means mitigating the worst impacts of change and pragmatically adapting to a world that is warming; for geographers, this means that there is a long road ahead on new research.

The Green Climate Fund will aim to provide 100 billion U.S.D. in aid by 2020 to support climate adaptation measures taken by the most vulnerable developing nations. This leaves a growing position for scholars to investigate how these funds are spent and the implications that they have on both landscape and culture. Whether the subject is REDD+ or cultural adaptation to climate change, the creation of this fund opens new doors for geographers of all types, and we should be at the forefront, the one subject field that is poised to answer all of the questions that will be asked from the creation of this fund.

The agreement reached in Cancún is surely imperfect. As a compromise document it is unlikely that any individual party or NGO will be completely happy with it. It sets an acceptable target for global average warming limits at 2 degrees Celsius while many wanted it set at 1.5. It is not a legally binding agreement with any built-in enforcement mechanism that requires individual countries to live up to the pledges of GHGe they have made. The pledges made thus far by developed countries are unlikely to cap warming at 2 degrees C. And nations most vulnerable to the effects of shifting climatic conditions are likely to find the financial provisions for adaptation made in the Green Climate Fund and the transfer of more carbon-neutral technologies from the most developed countries not nearly enough. However, after the disastrous end to the talks in Copenhagen, this agreement keeps the conversation alive and has helped restore trust that the UN negotiation process can ultimately facilitate a solution to the growing problem of climate change.

What became increasingly clear throughout the two week conference was that climate

change has ceased to be an academic issue of interest solely to climatologists, atmospheric physicists, chemists or modelers. The talks themselves highlighted the fundamental political nature of the mitigation discussion and were steeped in the language of power, economics and historical fissures of distrust. The impacts of changing climatic conditions will not be homogenous across space. Rather, regional variation will underscore the critical dynamics driving water resources, health, agriculture and food security, infrastructure, socioeconomic activities, terrestrial, freshwater and marine ecosystems and coastal zones. These various impacts will necessitate a wide range of creative adaptation strategies for vulnerable populations and ecosystems facing critical thresholds of change. As geographers we have the ability, perhaps even obligation, to engage and contribute meaningfully in what is increasingly being recognized as an unprecedented issue of social relevance.

Perhaps what truly brings me (Jon) to this view is that throughout my week at COP16, I met very few geographers, which I found rather disappointing. Yes, there were economists of all sorts, biologists, ecologists, meteorologists, and political scientists, but they all approached climate change through their own lens, one which unfortunately always seemed parochial and didn't address the full range of issues climate change creates. As geographers we should adopt the subject of climate change as our own and become involved on a multi-scalar level to help those outside of the subject understand the implications that our actions in this world has on other countries and cultures.

For further information on the COP16 conference, see the blog entitled "Geography, Climate Change, and the UN Climate Negotiations" at <http://aag-cop15.blogspot.com>. ■

Jon Gehrig (University of Texas)  
Mike Urban (University of Missouri)

### AAG Newsletter Op-Eds

*The AAG invites brief opinion pieces highlighting the contributions of geographical analysis to the understanding of important public issues and events. Submissions are encouraged from across the full breadth of the discipline. These pieces reflect opinions of contributing AAG members and do not represent an official AAG position on any issue. Op-ed pieces must be consistent with the AAG ethics policy and will be published on a space available basis. Send submissions of no more than 750 words to [newsletter@aag.org](mailto:newsletter@aag.org).*



# Washington Monitor

## National Association of State Boards of Education Endorses AAG Resolution

As I mentioned in last month's column, we at the AAG are hopeful that Congress will finally reauthorize the Elementary and Secondary Education Act (ESEA) in 2011. Accordingly, we are planning to make a major push next year to convince the Obama Administration and members of Congress that K-12 geography education deserves dedicated funding as part of a new law.

We have developed a resolution that has been endorsed by the leading geography and GIS organizations as a central part of these efforts. The resolution:

- Urges the Obama Administration to include geography and geospatial education in its Science, Technology, Engineering, and Mathematics (STEM) and ESEA Blueprint for Reform proposals;
- Urges Congress to include authorizations and appropriations for geography education consistent with other core academic subjects for K-12, as part of a reauthorized ESEA, and
- Urges Congress to enhance geography teacher training by passing legislation such as the Teaching Geography is Fundamental Act (H.R. 1240/S. 749).

This resolution recently received a major outside boost, as the **National Association of State Boards of Education (NASBE)** endorsed it. Founded in 1958, NASBE serves as the voice in Washington for state and territorial boards of education. The association's principal objectives are to strengthen state leadership in education policymaking; promote excellence in the education of all students; advocate equality of access to educational opportunity; and assure responsible lay governance of public education. Support from this association has the potential to impact state boards of education across the country.

We are grateful to NASBE for their support and hope to encourage other leading

groups and individuals to support K-12 geography education at this key moment.

## NSF Budget Targeted in 2011

As I am writing this column in early December, the White House and Congressional Republicans appear to be close to a deal that would fund the federal government through the end of Fiscal Year 2011 at or near current spending levels. The agreement sets the stage for what could be a tumultuous year for science in 2011.

Rep. Eric Cantor (R-VA), who is poised to become Majority Leader in the 112<sup>th</sup> Congress, launched a website in May called "You Cut," which encourages Americans to submit ideas for specific spending cuts that the House of Representatives should enact. As part of this initiative, Cantor started "citizen reviews" of government agencies. The first agency targeted on the site is the NSF.

Congressman Adrian Smith (R-NE), a member of the House Science Committee, is featured in a video on the website in which he credits NSF and its grantees for many revolutionary discoveries and Nobel prize-winning research. But Smith goes on to question the logic of certain grants—specifically, two mid-sized computer science grants related to developing modeling technologies for sports or video gaming purposes. On the same page, the site asks viewers to search the NSF website for grants they find "wasteful" and to submit the award numbers for the grants in question. The site suggests certain search terms when looking for grants, including: "culture," "media," "social norm," "museum," and "leisure."

It is not a stretch to assume that Cantor and his allies will likely target social and behavioral science funding as part of their attacks on the NSF's budget. It has even been suggested that Cantor might push to cut the appropriation for the Social, Behavioral, and Economic (SBE) Sciences directorate by 50 percent. Such a move would obviously be devastating for the Geography and Spatial Sciences Program—which is located within SBE.

I have worked as a science advocate in Washington for about a decade and I am more concerned now than ever about the immediate future of NSF research funding. While the Democratically-controlled Senate and President Obama will likely provide some sort of backstop against the harshest attacks on NSF, my best guess is that the Foundation's budget will face cuts in 2011. We at the AAG will work with our colleagues at other science organizations in Washington to try to minimize any reductions.

## Legislative Action on Climate Change Likely Forestalled

In June 2009, the House narrowly passed a significant climate bill that would have curbed U.S. greenhouse gas emissions through a system known as cap-and-trade. (For more on the legislation, please see the July/August 2009 Monitor). The 219-212 vote included the support of only eight Republicans, so with the GOP coming to power in January, the chances for significant action on climate change in the 112<sup>th</sup> Congress appear all but dead.

This fact is no doubt of great frustration to the climate science community (including many geographers), which strongly supported passage of the 2009 legislation. The aim of the bill, which was never taken up in the Senate, was to reduce greenhouse gas emissions by over 80 percent by 2050, a target supported by many climate scientists.

While U.S. action on climate change in the next few years will likely be limited to executive actions by the Obama Administration, several AAG members have served as our Association's official observers at the recent UN Framework Conventions on Climate Change. We are grateful for their efforts, and I wanted to share a blog on the topic maintained by geographers Mark Cowell and Mike Urban of the University of Missouri: <http://aag-cop15.blogspot.com>. ■

John Wertman  
jwertman@aag.org

See page 25 for your AAG Election Ballot. Return deadline is February 24, 2011.

*Ice Age Floods from page 1*

area in question occupies a good portion of southeastern Washington, and spreads along the Columbia River gorge to the Pacific Ocean (see map on page 9). A few well-known landmarks such as the Grand Coulee Dam are within, but generally the landforms of the Channeled Scablands come as a surprise to the visitor. The story of how they got there, and how we now know how they got there, reads like a Hollywood movie script.

Farmers and ranchers had long recognized that the deep wounds on the land surface and the thin to absent soils made row crop agriculture impossible in many parts of eastern Washington. Grazing and some hay production in the thicker soils of the low basins was and is the only agricultural activity possible in what they referred to as "scabland." The tortured appearance of the land also attracted the curiosity of geologists and geographers in the early years of the 20<sup>th</sup> century. Geoscientists of the day struggled to explain the landforms they saw within the confines of contemporary glaciation theory, until in 1923 a young upstart geologist who had taught at both Seattle-area high schools and briefly at the University of Washington shocked the scientific community with a daring proposal.

### J Harlan Bretz

His name was J Harlan Bretz (he not only invented the J but stubbornly refused to put a period after it), and he would soon be hightailing it back to the relative intellectual safety of the University of Chicago,

returning west only for summer fieldwork expeditions.

Against all accepted theory, and skirting dangerously close to "catastrophism," Bretz hypothesized that the strange landscape was formed by a glacier-related flood over 100 miles wide, several hundred feet deep, and moving as rapidly as today's Interstate highway speeds. It was an outrageous hypothesis that greatly disturbed some of the most influential scientists of his day. Rather than attributing the landscape to slow geologic processes working over eons (the accepted uniformitarianism model), Bretz announced that his carefully assembled evidence revealed the clear marks of an incredible flood of unprecedented proportions. Roaring flood waters, he claimed, had scoured the loose cover of windblown sediment of the Palouse soil and eroded down to and into the underlying layers of basalt rock on the Columbia Plateau. Flood waters had created features like the system of anastomosing coulees and basalt benches pitted with depressions a few to over 100 feet deep; tear-dropped shaped islands of residual loess in the midst of the dry coulee system; hanging valleys and divide crossings a few hundred feet above the coulee floors; huge exotic boulders lying far from the known ice front; and huge relict cataract rims like Dry Falls in the Grand Coulee that were frozen in time and space when the water abruptly ceased.

### New Evidence

So began a decades-long debate on Bretz's radical hypothesis that placed him in professional isolation until the accumulation of evidence and new insights finally brought vindication decades later. That Bretz initially had no idea where such a quantity of flood water could have originated did not help. Evidence for a plausible source would not come until years later in 1942

when U.S. Geological Survey geologist Joseph Pardee reported a series of sand and gravel ridges as much as three stories high and as much as 500 feet apart in the Glacial Lake Missoula basin. This huge Pleistocene age water body covered parts of what is today Montana and Idaho.

Seen from the air, it was clear that the ridges were giant ripple marks of unprecedented size that could only have been produced by deep, rapidly flowing water. Bretz came out of retirement to review the new evidence, and pinpointed an untrustworthy ice dam holding in the lake in northern Idaho. Bretz speculated it collapsed repeatedly, discharging as much as 500 cubic miles of water in a few days. Finally, an image captured by Landsat I in 1974 conclusively illustrated that giant floods rampaging across the Columbia Plateau had created today's Channeled Scablands.

### The Scablands Renaissance

Today, after some 12,000 years of obscurity, the Ice Age Floods and the Channeled Scablands are enjoying something of a renaissance. The non-profit Ice Age Floods Institute ([www.iafi.org](http://www.iafi.org)) was created with the mission of promoting public education on the flood topic. After years of IAFI and local citizen encouragement the world's first geologic trail was signed into law by President Obama on March 30, 2009. The *Ice Age Floods National Geologic Trail* is the first of its kind (see map). The National Park Service in partnership with the IAFI coordinates the efforts of state and local groups in providing information and promoting Trail-related tourism development. The U.S. Forest Service published a large map showing the extent of the Missoula Floods in the 1990s, currently out of print. The IAFI with the assistance of Eastern Washington University's Geography & Anthropology and Geology Departments revised the Forest Service map in 2010. The new map will be available shortly from the IAFI and other sources.

*The Ice Age Floods National Geographic Trail* draws attention to a different Washington on several levels and at several speeds. First, routed through easily accessible highways and back roads, you too can recreate the



CREDIT: EUGENE RIVER

"Monster Rock" in the Ephrata Fan in Washington was carried more than a mile by the flood.

*Continued on page 9*



*Ice Age Floods from page 8*

sensation of a massive glacial outburst flood as you drive along the approximate path the water took at about the same speeds it traveled. If you slow down, you will experience parts of Washington off the beaten path. Pioneer families found the land inhospitable, and much of it remains undeveloped to this day.

In a few places, deteriorating grain elevators criss-crossed by abandoned rail lines dot the landscape. One might call this the landscape of rural grit; the same Eastern Washington that captivated geographer Donald Meinig (*The Great Columbia Plain*) a half-century ago probably looks much the same today. And finally, if you have the opportunity to explore on foot, you can move beyond the "constructed" wasteland and see the land from a different perspective. While European immigrants may have surveyed the channeled scablands and found little of use, other inhabitants for millennia had found it bountiful. Native Americans typically preferred the scablands to the rich soils of nearby hills that farmers later would favor. The land supported thriving semi-nomadic communities: root crops such as camas and biscuitroot and berries for gathering; bison, elk, antelope, and numerous small game for hunting, abundant fish and waterfowl in the many lakes, streams, and seasonal wetlands that dot the land; and all the construction material one could ever want,

including tule, cattail, waterbirch, sage bark, Indian hemp, and of course, stone. It was a lifestyle, and a landscape, that lasted well into the 20<sup>th</sup> century when ranching interests encroached. The inimitable Eastern Washington University geographer Dale Stradling, who spent decades leading field trips and giving public presentations on the Ice Age Floods until his death in 2008, recalled in earlier years meeting unexpectedly with Native Americans out in the scablands.

If the story of the floods themselves and their scientific interpretation reads like a Hollywood movie script, the *Ice Age Floods National Geographic Trail* can be thought of as their Hollywood stage set, the material landscape that directs visitors to certain readings and distracts them from others. The *Trail* links the Pleistocene to the postmodern in the form of

eco-tourism. With tourism and its related service industries often touted as the only competitive edge that peripheral regions have left in today's globalizing world, it is fitting that economically depressed segments of the Pacific Northwest should

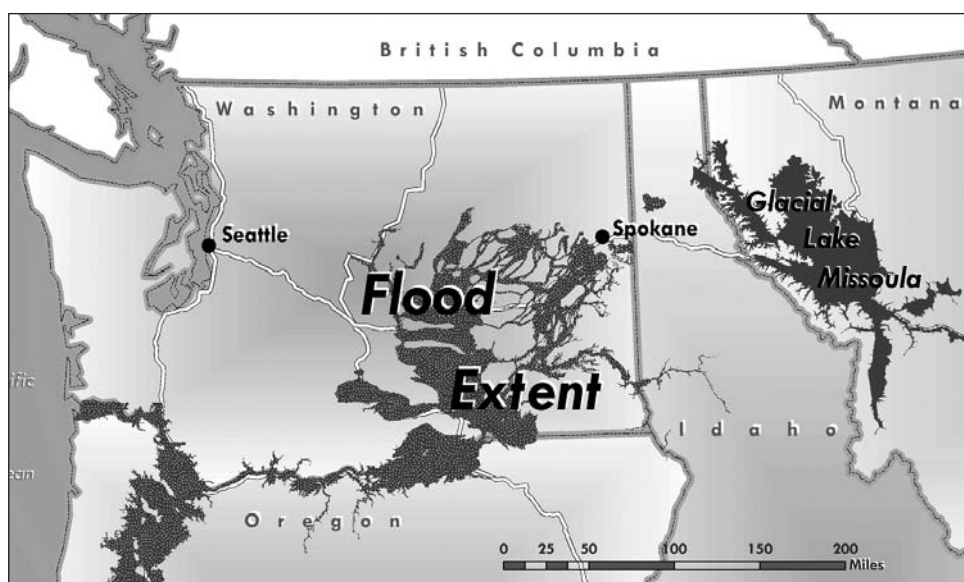


CREDIT: EUGENE KIVER

Rushing water at 65 mph carved a ghostly landform 350 feet tall known as "Dry Falls."

turn to a landform 12,000 years old to solve today's problems. The potential role the *Trail* could play in regional economic recovery was a repeated theme in congressional discussions leading to its passage. Yet as of Fall 2010, very few tourist-related developments have been completed. One can visit a few interpretive centers—at Dry Falls, Washington and near The Dalles, Oregon, for example. But for the most part, the Hollywood stage set is not yet built, the narrative still being shaped by local communities, non-profit organizations, entrepreneurs, and federal agencies. Though now you may be more likely to encounter cattle or sheep out on the range, and a McDonalds in town, the giant features of the Ice Age Floods themselves still evoke a world 12,000 years ago. ■

Eugene P. Kiver and Stacy Warren  
Eastern Washington University



CREDIT: STACY WARREN

Around 15,000 years ago, a glacial dam broke at Lake Missoula sending over 500 cubic miles of water rushing across the flood channels shown here in what is now Montana, Idaho, Washington and Oregon.

The AAG Newsletter publishes articles in advance of the AAG Annual Meeting that highlight various geographic aspects of the host city or region. Short (one page) articles are still being accepted for the March and April editions. If you are interested in contributing a short article, please contact the newsletter's editors with your ideas at [newsletter@aag.org](mailto:newsletter@aag.org).

**Diana Liverman**, who co-directs the University of Arizona's Institute of the Environment, recently served as an adviser for *Fate of the World*, a new video game that gives players the option to save or destroy the world in the face of adverse global climate change.

Liverman, who was recently awarded the prestigious Founder's Medal by the Royal Geographical Society, has worked throughout her career to expand scientific knowledge of climate change through scholarship, teaching, and creative writing. To that resume, she now has added video game consultant.



Liverman

In *Fate of the World*, players can engage in 10 different scenarios over a 200-year period beginning in 2020 to either build a Utopian and sustainable global society or destroy the world through climate change. Players must balance the resource needs of growing populations with the climate impacts of meeting those needs.

"Some might say, 'That's terrible to have the option to burn up the world.' But to destroy the world successfully, you would have to know a lot about climate change, emissions, world geography and politics and how they combine with other factors to create a catastrophe," said Liverman.

More about the video game *Fate of the World* may be found at [www.fateoftheworld.net](http://www.fateoftheworld.net).

**John Rennie Short**, professor of geography at the University of Maryland Baltimore County, delivered the keynote address at "Cartography and Empire: Commemorating the Bicentennial of the Lewis and Clark Map," hosted by Yale's Lamar Center for the Study of Frontiers and Borders and the Western Americana Collection of the Beinecke Library, on November 12, 2010, at Yale University in New Haven.

In 1954, at the age of 20, **Shue Tuck Wong** was teaching geography at the Chan Wah Secondary School in his home country of Malaysia. An opportunity to study abroad attracted his attention, and soon he had become an exchange student in the United States. Now an internationally-known authority on resource geography with a half century of accomplishments to his credit, Wong recently returned to his home town for the first time in more than 50 years.

Wong took his two sons along on the journey, Wong Siew Choong (37) and Wong Siew Yun (28) to visit his hometown, Seremban, where he once taught. Both sons are graduates of Simon Fraser University, where Wong has spent the majority of his professional career.

Wong told the *AAG Newsletter* that while he was not surprised that his formerly sleepy hometown of Seremban had grown to a metropolis of more than 300,000, he was surprised to find that a visitor could still draw an impressive amount of attention. "When they found that I had come after so many years, a local newspaper came to interview me," he said.



(L to R) Mr. Woo, Shue Tuck Wong, Wong Siew Choong, and Wong Siew Yun.

"I took my sons to the many places in town and explained to them the social and economic changes that had come over the years," he said.

Wong's father once owned a grocery store called Hup Kee on Carew Street. Although many changes have taken place over the years, the store is still there. Today it is owned by Mr. Woo, pictured to the left in the photo.

Wong earned a B.A. in geography from Augustana College, a master's degree in Southeast Asian history and political geo-

graphy from Yale, and a PhD from the University of Chicago.

**Kam Wing Chan**, Professor, University of Washington Department of Geography, appears in a documentary on China, *Man Zou: Beijing to Shanghai*, which premiered on Seattle public TV, KCTS 9, on December 2, 2010. In the film, he discusses China's rural-urban divide and the predicament of migrant workers. In late October, Chan was also interviewed by *Science* and about China's latest census, the world's largest. He also examined some of the logistical problems in China's census in *Science's* radio broadcast program, *Science Update*, in November. Earlier, Chan discussed China's household registration system and a host of issues relating to migrants on Voice of America, China Radio International, and BBC. In December, Chan published a detailed commentary on urbanization on China's most influential finance and economics news site, Caixin.

**Ryan Griffis, Sarah Ross and Lize Mogel** recently launched their first collaborative project examining World's Fairs and the Olympics and their social, political, and spatial effects on cities. "Siting Expositions: Vancouver" is an audio tour of False Creek, an urban waterway transformed by Expo86 and the 2010 Olympics. Available as a paper/CD book and as a free download, this project is part of the publication/audio tour collection "Stories in Reserve" (Temporary Travel Office, 2010), available at [http://temporarytraveloffice.net/stories\\_](http://temporarytraveloffice.net/stories_). The production of "Stories in Reserve, Volume One" was made possible in part through a Creative Research Award from the College of Fine & Applied Arts at the University of Illinois, Urbana-Champaign.

## Members of Note

AAG members should submit items for "members of note" to [newsletter@aag.org](mailto:newsletter@aag.org). Please use "members of note" in the subject line.



## Data Management Plans Required as Part of all NSF Proposals

Starting in January 2011, the National Science Foundation (NSF) will be enforcing a long-standing data policy which requires that all submitted proposals include a supplementary document called a Data Management Plan (DMP) which describes plans for data management, or asserts the absence of the need for such a plan. The policy states:

*Investigators are expected to share with other researchers, at no more than incremental cost and within a reasonable time, the primary data ... created or gathered in the course of work under NSF grants. ([http://www.nsf.gov/pubs/policydocs/pappguide/nsf11001/aag\\_index.jsp](http://www.nsf.gov/pubs/policydocs/pappguide/nsf11001/aag_index.jsp), Section VI.D.4.b)*

The Data Management Plan (2 pages maximum, uploaded as a Supplementary Document) should describe how the PIs will manage and disseminate data generated by the proposed project. Plans must include sufficient information so that peer reviewers can assess the plan as part of the merit review process. The DMP supplement should describe how the proposal will conform to NSF policy on the dissemination and sharing of research results and may include:

1. The types of data, samples, physical collections, software, curriculum materials, and

other materials to be produced in the course of the project;

2. The standards to be used for data and metadata format and content (where existing standards are absent or deemed inadequate, this should be documented along with any proposed solutions or remedies);
3. Policies for access and sharing including provisions for appropriate protection of privacy, confidentiality, security, intellectual property, or other rights or requirements;
4. Policies and provisions for re-use, re-distribution, and the production of derivatives; and
5. Plans for archiving data, samples, and other research products, and for preservation of access to them.

NSF recognizes that researchers collect diverse types of data and different professional communities may have different standards, and will be flexible in assessment of Data Management Plans. In developing a plan, researchers may want consult with university officials as many universities have explicit data management policies. Even if no data are to be produced, e.g. the research is purely theoretical or is in support of a workshop, a DMP is required. In this case, the DMP can simply state that no data is to be produced.

This policy will go into effect in January 2011 and impacts ALL proposals submitted for

the next regular cycle of GSS proposals (target date January 15) and DDRIs (due date February 15). Proposals submitted without a DMP will be automatically checked in Fastlane and returned *without review*.

For more information please consult the newest *Proposal & Award Policies & Procedures Guide* (PAPPG, NSF 11-1), available online at [http://www.nsf.gov/pubs/policydocs/pappguide/nsf11001/nsf11\\_1.pdf](http://www.nsf.gov/pubs/policydocs/pappguide/nsf11001/nsf11_1.pdf).

A very helpful resource is the NSF Policy Office FAQ page on DMPs, <http://www.nsf.gov/bfa/dias/policy/dmpfaq.jsp>

For further questions please feel free to contact the Geography and Spatial Sciences Program Directors, Thomas Baerwald ([tbaerwald@nsf.gov](mailto:tbaerwald@nsf.gov), 703-292-7301, Ezekiel Kalipeni ([ekalipen@nsf.gov](mailto:ekalipen@nsf.gov), 703-292-8457), and Antoinette WinklerPrins ([anwinkle@nsf.gov](mailto:anwinkle@nsf.gov), 703-292-4995). ■

Geography and Spatial Sciences  
Division of Behavioral and  
Cognitive Sciences  
Directorate of Social, Behavioral,  
and Economic Sciences  
National Science Foundation  
4201 Wilson Blvd., Room 995  
Arlington, VA 22230  
USA

## Of Note

The Harvard Graduate School of Design is now offering a new concentration in its Master in Design Studies degree. This new concentration, *Anticipatory Spatial Practice*, will address the inevitability of unpredictable shocks to the built and natural environment, whether due to earthquakes and floods or radical social ruptures, and will provide students with the intellectual skills to develop preemptive, anticipatory practices in the areas of design, analysis, urban and territorial management, and development. See [www.gsd.harvard.edu/academic/mdes](http://www.gsd.harvard.edu/academic/mdes) for details.

Middlebury College has announced a dissertation fellow program. Geographers with a regional focus in Latin America, Asia, or Africa are encouraged to apply.

A description of the fellowship is available at [www.middlebury.edu/academics/administration/employment/diss\\_fellows](http://www.middlebury.edu/academics/administration/employment/diss_fellows).

Sallie Marston (University of Arizona; US PI) and Deborah Dixon (University of Aberystwyth; UK PI), together with J. P. Jones III (University of Arizona; co-PI) and Keith Woodward (University of Wisconsin-Madison; co-PI) have received a jointly funded research grant of \$910,743 from the National Science Foundation's Geography and Spatial Science (GSS/BCS) and Science, Technology and Society (STS/SES) programs, and the Arts and Humanities Research Council of the United Kingdom. The project, ART-SCIENCE COLLABORATIONS, BODIES, and ENVIRONMENTS,

is a multi-sited study of contemporary collaborative projects involving diverse groups of scientists and artists—covering climate change, bio art, computer visualization, landscape restoration, and space exploration. The international team of four faculty and four postdoctoral researchers—Mrill Ingram (University of Wisconsin-Madison) and Linda Vigdor (University of Illinois, Urbana-Champaign) in the U.S. and Harriet Hawkins and Elizabeth Straughan (University of Aberystwyth) in the U.K.—seeks to understand the institutional, political, epistemic and technological matrices that both allow for these interfaces to emerge, and that shape their development and wider impact.



### Historical Geography SG

Student members of the Historical Geography Specialty Group (HGSG) are invited to submit proposals for the HGSG Student Research Award. The specialty group will grant two prizes in 2011. The awards will be \$400 for the Carville Earle Award recognizing research at the PhD level and \$200 for the Terry G. Jordan-Bychkov Award supporting Master's level research. Students can win each award only once.

Students seeking funds to underwrite thesis or dissertation research should submit a two-page summary of their proposed research on a topic in historical geography. The statement should spell out the research question and how archival and/or field work is necessary to complete the project, and specify the archives collection and/or field research site to be utilized. The award may be used to cover travel and related research expenses. In addition to the two-page summary, applicants should include a short budget of estimated expenses. The student's major advisor must also submit a letter of support the committee's chair that verifies the student is making progress toward conducting their research. A two-page report will be required upon completion of the funded portion of the project and will be published in *Past Place*.

Please submit your two-page proposal with budget via e-mail by **March 1, 2011**, to Dr. Ben Tillman, Chair, HGSG Student Research Awards committee, Texas Christian University, B.Tillman@tcu.edu.

### European SG

The European Specialty Group (ESG) invites submissions of conference papers that graduate students presented (or are

going to present) at regional or national geography meetings (and related interdisciplinary conferences) between May 2010 and April 2011. Papers must focus on European geography and students must be members of the ESG in order to be eligible. Papers should be double-spaced, 12-point font, and not more than 15 pages in length (including everything). Please submit two files. One file should consist of the paper without the author's name. A separate file should include the author's name, institution, level of study (MA, PhD), when and at what conference the paper was/will be presented. Please send these files to Micheline van Riemdijk (vanriems@utk.edu) by **March 15, 2011**. Early submissions are encouraged, late submissions will not be considered. The winner will receive a cash prize and a ticket to the award banquet.

### Disability SG

Students working on topics concerned with the complex and multifaceted geographies of disability, aging and chronic illnesses are encouraged to submit a paper to the 2011 AAG Todd Reynolds Disability Specialty Group Student Paper Competition. The successful student will receive a cash prize of \$100. Papers prepared for publication, conference presentation, and graduate or senior undergraduate courses, as well as entries written specifically for this competition, are eligible for submission. Each student may submit only one paper. The student should be the lead contributor to the paper if it is co-authored. Students are not required to be a current member of the DSG or AAG nor must they plan to attend the 2011 AAG Annual Meeting to submit a paper. International submissions are welcome.

The paper should not exceed 25 double-spaced pages (all inclusive). A cover letter should accompany all entries and contain: Current title of the paper and a brief abstract (no more than 100 words); Author and co-authors' names; Academic affiliation; Faculty advisor for the paper; Mailing address; E-mail address; Phone number. Students considering submitting are advised to contact student paper competition coordinator Ryan Parrey by e-mail in advance. All entries must be received by **February 28, 2011** by email to: Ryan Parrey, Disability Studies, University of Illinois, Chicago (rparrey@gmail.com).

### Water Resources SG

The Water Resources Specialty Group (WRSG) of the AAG seeks to honor senior scholars for sustained and effective research contributions in water resources science, planning, and policy. The following should be submitted for nomination: statement of effectiveness in the field of water resources with biographical outline; bibliography of nominee's relevant publications; a minimum three letters of support. Further information is available at: [www.esu.edu/~shu/wrsg](http://www.esu.edu/~shu/wrsg).

WRSG also offers several awards for illustrated papers, research papers, research proposals and student travel grants at the undergraduate and graduate level. A summary of each award and submission requirements can be found at: [www.esu.edu/~shu/wrsg/Awards/Calls4Students2011.html](http://www.esu.edu/~shu/wrsg/Awards/Calls4Students2011.html). The Awards Committee must receive all nomination and award materials by **February 1, 2011**. Please send all materials electronically to: Dr. Laura J. Stroup, Chair of the WRSG Award Committee, Email: [LJStroup@txstate.edu](mailto:LJStroup@txstate.edu).

## VGSP Accepting Applications for 2010-11

The Visiting Geographical Scientist Program (VGSP) is accepting applications for the 2010-11 academic year. VGSP sponsors visits by prominent geographers to small departments or institutions that do not have the resources to bring in well-known speakers. Participating institutions select and make arrangements with the visiting geographer. Applications and program details may be found at [www.aag.org/org/education/](http://www.aag.org/org/education/)

[aag.edu\\_visitinggeographer.cfm](http://www.aag.edu_visitinggeographer.cfm). A list of pre-approved speakers is also available. Please make sure to include a brief cover letter with your application that describes the schedule of events or activities being planned.

VGSP is funded by Gamma Theta Upsilon (GTU), the international honors society for geographers ([www.gammathetaupsilon.org](http://www.gammathetaupsilon.org)). Additional funding is available for applications involving Historically Black

Colleges and Universities, Tribal Colleges, Hispanic-Serving Institutions and other Minority-Serving Institutions through a grant from the National Science Foundation as an aspect of AAG's ALIGNED Project (Addressing Locally-tailored Information Infrastructure & Geoscience Needs for Enhancing Diversity). Questions may be directed to [jketchum@aag.org](mailto:jketchum@aag.org).

## AAG “No Passports Required” Workshops Invites Applications

The application deadline for the AAG’s Center for Global Geography Education (CGGE) “No Passports Required” workshops has been extended until January 15, 2011. Each workshop is designed to: 1) introduce geographers to the content of the CGGE modules; 2) illustrate how the various resources in the CGGE modules can be used for undergraduate instruction; 3) prepare geographers from different countries to use the CGGE modules for international teaching collaborations.

The AAC’s Center for Global Geography Education (CGGE) offers educational resources and professional development opportunities for higher education faculty seeking innovative and exciting ways to teach geography.

Funded since 2003 by the National Science Foundation’s Course, Curriculum, and Laboratory Improvement program, CGGE

recently produced the first editions of six online course modules for undergraduate geography classes: *Population and Natural Resources*, *Global Economy*, *National Identity*, *Migration*, *Water Resources*, and *Global Climate Change*. The modules are also appropriate for high school students enrolled in the AP Human Geography course. All of the modules were written collaboratively by geographers from several countries.

Each CGGE module consists of (i) a conceptual framework providing an introduction to some of the key theories and concepts that geographers use to examine issues, (ii) a set of regional case studies that draw on geographic research and which engage students in problem solving and spatial analysis, and (iii) collaborative projects that connect undergraduate geography classes in different countries for online learning and discussions supported by Moodle e-learning technologies. The

modules are available at <http://globalgeography.aag.org>.

To support dissemination of the modules, there will be two “No Passports Required” workshops held at the 2011 AAG Annual Meeting in Seattle, Washington on April 12 and 13 from 9:00 am - 12:00 Noon (it is only necessary to attend one workshop).

Each workshop will be limited to 20 participants. In return for completing a post-workshop evaluation questionnaire, participants will receive a stipend of \$100 from the AAG.

Additional information and application materials are available on the workshops page at <http://globalgeography.aag.org>.

Applications must be received no later than **January 20, 2011**. ■

## Grants & Awards Received

**Robert Kruse**, Associate Professor of Geography at West Liberty University in West Virginia, has received the award for Outstanding Article of 2010 published in *Southeastern Geographer*, the journal of the Southeast Division of AAG. “The Geographical Imagination of Barack Obama: Representing Race and Space in America” was selected for its “exceptional scholarship, originality of ideas and attention to the sensibilities of a diverse audience.” *Southeastern Geographer*, 49(3) 2009: pp. 221-239.

**Shaowen Wang** of the University of Illinois at Urbana-Champaign has been named a Helen Corley Petit Scholar for 2011-12, an honor given annually to exceptionally successful newly-tenured faculty members in the college of Liberal Arts and Sciences based on their extraordinary records as scholars and teachers. The endowment is provided by Mrs. Helen Corley Petit, a deceased alumna of the College of Liberal Arts and Sciences at the University of Illinois at Urbana-Champaign.

The broadband mapping work of **Salisbury University’s Eastern Shore Regional GIS Cooperative** has been extended from two to five years and the associated grant has been increased to more than \$2.12 million. With the extension, the ESRGC is taking on a number of additional tasks related to expanding scope of the online broadband map. See [www.mdbroadbandmap.org/map](http://www.mdbroadbandmap.org/map).

The National Institutes of Health (NIH), National Center on Minority Health and Health Disparities, has awarded a \$1.77 million, five-year research grant to Carolinas HealthCare System, Charlotte, North Carolina. **Owen Furuseth**, **Heather Smith**, **Janni Sorensen**, and **Thomas Ludden** in the Department of Geography and Earth Sciences at the University of North Carolina at Charlotte are collaborating with healthcare researchers in this research titled, “A Transdisciplinary Approach to the Evaluation of Social Determinants of Health.” This research uses geographic information

systems and qualitative methods to develop an understanding of the fundamental social determinants of healthcare outcomes at a neighborhood scale. For more, see <http://mapprnet.org>.

**Ming-Hsiang (Ming) Tsou** and **Li An** of San Diego State University have received an NSF award of more than \$1.3 million in support of their project, “CDI-Type II: Mapping Cyberspace to Realspace: Visualizing and Understanding the Spatio-temporal Dynamics of Global Diffusion of Ideas and the Semantic Web.” This four-year project is a multidisciplinary collaboration with **Dipak K. Gupta** (Political Science), **Jean Marc Gawron** (Linguistics), and **Brian Spitzberg** (Communications), all at San Diego State University. This project will form a new multidisciplinary research framework in connecting social science and computer science for analyzing the dynamic information landscape on the Internet in which ideas spread quickly.

## Nature and Society Section Editor Sought for *Annals of the AAG*

The Association of American Geographers seeks applications and nominations for the **Nature and Society** section editor for the *Annals of the Association of American Geographers*. The new section editor will be appointed for a four-year editorial term that will commence on January 1, 2012. The appointment will be made by spring 2011.

The AAG seeks an editor who will solicit, review, and accept for publication articles in the Nature and Society subject area, within publication-space limitations that will be determined annually.

The AAG Council expects that the new editor will accept manuscripts from across the breadth and depth of intellectual activity in their subject area of contemporary American geography. The AAG Council further expects that the *Annals* will publish items that represent the very best thinking

in American geography. The section editor should be eager to act as an intellectual entrepreneur to attract the very best work being produced.

In support of these goals, the editorial candidate should possess demonstrated expertise within the section subject area (Nature and Society), a distinguished record of scholarly achievement, a broad perspective on the discipline of geography, respect and affection for its diversity, and an ability to work constructively with authors during the review process. Institutional support for the new editor (especially some time released from teaching) is desirable, but not mandatory. The AAG will provide a stipend to be used for expenses and honorarium at the editor's discretion.

The section editor will work in coordination with the AAG Journals Managing Editor, located at the Meridian Place AAG

office in Washington, DC. The Managing Editor bears primary responsibility for the logistics of processing manuscripts and book reviews, and for assembling and coordinating the publication of each issue of the journal in collaboration with the editors and the journal's publisher. Editor candidates, therefore, should share the AAG Council's vision of an accessible, decentralized, and collaborative *Annals* editorship.

### Apply

A letter of application that addresses both qualifications and a vision for the Nature and Society section should be accompanied by a complete curriculum vitae. Nominations and applications should be submitted by **January 20, 2011**. Please e-mail applications or letters of nomination to Journals Managing Editor Robin Maier at [rmaier@aag.org](mailto:rmaier@aag.org). ■

## People, Place, and Region Section Editor Sought for *Annals of the AAG*

The Association of American Geographers seeks applications and nominations for the **People, Place, and Region** section editor for the *Annals of the Association of American Geographers*. The new section editor will be appointed for a 4.5-year editorial term that will commence on July 1, 2011. The appointment will be made by spring 2011.

The AAG seeks an editor who will solicit, review, and accept for publication articles in the People, Place, and Region subject area, within publication-space limitations that will be determined annually.

The AAG Council expects that the new editor will accept manuscripts from across the breadth and depth of intellectual activity in their subject area of contemporary American geography. The AAG Council further expects that the *Annals* will publish items that represent the very best thinking

in American geography. The section editor should be eager to act as an intellectual entrepreneur to attract the very best work being produced.

In support of these goals, the editorial candidate should possess demonstrated expertise within the section subject area (People, Place, and Region), a distinguished record of scholarly achievement, a broad perspective on the discipline of geography, respect and affection for its diversity, and an ability to work constructively with authors during the review process. Institutional support for the new editor (especially some time released from teaching) is desirable, but not mandatory. The AAG will provide a stipend to be used for expenses and honorarium at the editor's discretion.

The section editor will work in coordination with the AAG Journals Managing Editor, located at the Meridian Place AAG

office in Washington, DC. The Managing Editor bears primary responsibility for the logistics of processing manuscripts and book reviews, and for assembling and coordinating the publication of each issue of the journal in collaboration with the editors and the journal's publisher. Editor candidates, therefore, should share the AAG Council's vision of an accessible, decentralized, and collaborative *Annals* editorship.

### Apply

A letter of application that addresses both qualifications and a vision for the People, Place, and Region section should be accompanied by a complete curriculum vitae. Nominations and applications should be submitted by **January 20, 2011**. Please e-mail applications or letters of nomination to Journals Managing Editor Robin Maier at [rmaier@aag.org](mailto:rmaier@aag.org). ■

See page 25 for your 2011 AAG Election Ballot.



## 2011

### JANUARY

3. Jeannette D. Black Memorial Fellowship in the History of Cartography, Brown University. [www.brown.edu](http://www.brown.edu).
10. Newberry Library long-term Fellowships in the Humanities. [www.newberry.org/research/felshp/fellowshome.html](http://www.newberry.org/research/felshp/fellowshome.html).
15. Smithsonian Institution Fellowships. [www.si.edu/ofg/units/sorsnmai.htm](http://www.si.edu/ofg/units/sorsnmai.htm).
21. Middlebury College Dissertation Fellowship. [www.middlebury.edu/academics/administration/employment/diss\\_fellows](http://www.middlebury.edu/academics/administration/employment/diss_fellows).

### FEBRUARY

10. Newberry Library short-term Fellowships in the Humanities. [www.newberry.org/research/felshp/fellowshome.html](http://www.newberry.org/research/felshp/fellowshome.html).
15. David E. Sopher New Scholars Award. [www.gorabs.org](http://www.gorabs.org).

15. NSF Doctoral Dissertation Research Improvement Grants, full proposal deadline. [www.nsf.gov](http://www.nsf.gov).

### MARCH

15. Scholar-in-Residence and Affiliated Visiting Scholars Programs, Beatrice Bain Research Group, UC Berkeley. <http://bbrg.berkeley.edu/scholarprog.html>.

### AUGUST

24. NSF Research Experiences for Undergraduates. [www.nsf.gov/crssprgm/reu/reu\\_contacts.jsp](http://www.nsf.gov/crssprgm/reu/reu_contacts.jsp).

### AAG Grants and Competitions

The AAG offers numerous grants and awards. Visit [www.aag.org/grantsawards](http://www.aag.org/grantsawards) for a full listing including detailed descriptions, deadlines, and application procedures.

### NSF Grants and Competitions

Detailed information about NSF grants and awards is available at [www.nsf.gov](http://www.nsf.gov).

## AAG ADVANCING GEOGRAPHY FUND

I (we) pledge to contribute \_\_\_\_\_ to the Association of American Geographers as part of the Advancing Geography Campaign.

Giving levels include:

- |   |                   |
|---|-------------------|
| <input type="checkbox"/> \$500 to \$999       | Scholars Circle   |
| <input type="checkbox"/> \$1,000 to \$4,999   | Millennium Circle |
| <input type="checkbox"/> \$5,000 to \$9,999   | Century Circle    |
| <input type="checkbox"/> \$10,000 to \$24,999 | Explorers Circle  |
| <input type="checkbox"/> \$25,000 and above   | Leadership Circle |

This gift will be made as follows:

Total amount enclosed: \$ \_\_\_\_\_

Plus annual payments of: \$ \_\_\_\_\_

If you intend to fulfill your pledge through a gift other than cash, check, or marketable securities, please check:

- credit card       bequest       other

Credit Card:       Visa       MasterCard

Account Number \_\_\_\_\_

Name on Card \_\_\_\_\_

Expiration Date \_\_\_\_\_

Signature \_\_\_\_\_

- My (our) gift will be matched by my employer

I would like my gift to go toward:

- Endowment for Geography's Future  
 Developing Regions Membership Fund  
 AAG Student Travel Fund  
 Mel Marcus Fund for Physical Geography  
 AAG International Education Fund  
 Marble Fund for Geographic Science  
 AAG Public Policy Initiatives  
 Enhancing Diversity Fund  
 AAG Haiti Recovery and Reconstruction Fund  
 Area of Greatest Need  
 Other \_\_\_\_\_

Name \_\_\_\_\_

Address \_\_\_\_\_

Phone \_\_\_\_\_

Date \_\_\_\_\_

Please send this pledge form to:

AAG Advancing Geography Fund  
 1710 Sixteenth St. NW, Washington, DC 20009

## New Appointments

University of Connecticut, Assistant Professor, William Ouimet. PhD 2007, Massachusetts Institute of Technology

University of Otago (New Zealand), Lecturer, Simon Springer. PhD 2009, University of British Columbia.

University of North Alabama, Assistant Professor, Sunhui Sim. PhD 2010, Florida State University.

University of North Alabama, Assistant Professor, Ricardo Nogueira. PhD 2009, Louisiana State University.

Doshisha University (Kyoto City, Japan), Research Associate, Taro Futamura. PhD 2008, University of Kentucky

University of Michigan-Ann Arbor, Assistant Professor, Josh Newell. PhD 2008, University of Washington.

University of Northern British Columbia, Assistant Professor, Zoë A. Meletis. PhD 2007, Duke University.

University of Maryland College Park, Professor, Klaus Hubacek. PhD 2000, Rensselaer Polytechnic Institute.

University of Maryland College Park, Professor, George Hurtt. PhD 1997, Princeton University.

University of Maryland College Park, Assistant Professor, Julie Silva. PhD 2005, Rutgers University.

University of Maryland College Park, Assistant Professor, Tatiana Loboda. PhD 2007, University of Maryland College Park.

University of Maryland College Park, Assistant Professor, James Kellner. PhD 2008, University of Georgia.

## PRESIDENT



**AUDREY KOBAYASHI.** Professor and Queen's Research Chair, Geography, Queen's University; BA and MA, Geography, University of British Columbia; PhD, UCLA.

**Service to the discipline:** President, Past-President, and Council Member, Canadian Association of Geographers; Canadian delegate to the International Geographical Union; Board member, IGU Commission on Gender and Development; member of most of the committees of the CAG; editorial board member, *The Canadian Geographer*, *Gender, Place, and Culture*, *Ethics, Place, and Environment*.

**Service to the AAG:** Vice-President (2010-11); Associate Editor (1994-2000); and Editor (2002-2011), *Annals of the AAG People Place and Region*; Chair, AAG-CAG Liaison Committee; Chair, Urban Geography Specialty Group; Co-Chair, Ethics, Justice, and Human Rights Specialty Group; Board member, Values, Ethics, and Justice Specialty Group; board member, Geographic Perspectives on Women Specialty Group.

**Professional experience:** McGill University, Department of Geography (1983-1994); Queen's University, Institute of Women's Studies (Head of Department, 1994-1999); Queen's University, Department of Geography (1999-present).

**Major Honors and awards:** Award for Service to the Discipline, Canadian Association of Geographers; W.J. Barnes Teaching Excellence Award; Marion Porter Award for publication; University of Canterbury Erskine Fellowship; Fulbright Fellowship; Japan Foundation Fellowship;

Social Sciences and Humanities Research Council of Canada research grants and strategic grants.

**Teaching and research:** cultural and political geography, immigration, employment, human rights and citizenship, legal geographies, racism, gender.

**Publications:** Approximately 100 publications on immigration, anti-racist geographies, gender, Asian-Canadian communities; several edited volumes; coauthored books on youth and development in Asia; articles in the *Annals of the AAG*, *The Canadian Geographer*, *The Journal of Geography in Higher Education*, *The Professional Geographer*, *Gender, Place and Culture* and in edited collections such as *Geography in America*, *A Companion to Feminist Geography*, *A Companion to Cultural Geography*.

**Statement:** It is a pleasure to be involved with AAG Council at a time when the association is so healthy, well managed, and vibrant. Staff and council members show initiative, dedication, creativity, and passion for the discipline. I look forward to being part of some strong initiatives over the next two years. My focus will be upon: 1) helping to further the initiatives that are well underway in the AAG, including enhancing geographic education, outreach to developing regions, improving the visibility and relevance of the discipline in the public policy sphere, and maintaining a high level of research and publications on behalf of the AAG; 2) expanding international cooperation with sister organizations through the development of collaborative research and exchange of ideas that are important for today's world, including peace, climate change, hunger, and health; 3) enhancing the ability of the discipline to contribute to social justice nationally and internationally.

## VICE PRESIDENT (one to be elected)



**DAVID LEY.** Professor/Head of Geography and Canada Research Chair, University of British Columbia. PhD (1972), MS (1970) Pennsylvania State University, BA (1968) Oxford University.

**Service to Geography.** AAG Member since 1972; Associate Editor *Annals of the AAG*, 1992-93; AAG Urban Geography Specialty Group Board Member, Vice-Chair 1992-93; Chair, 1993-94; Canadian Association of Geographers' Member since 1972; elected National Councillor 1985-88; Associate Editor, *Canadian Geographer*, 1989-2002; Institute of British Geographers Member since 1976; IGU Commission on Urban Geography Member (1991-2001); Social Sciences and Humanities Research Council of Canada Grant Adjudication Committee (1982-85), Committee Chair (1984-85); Joint Editor, Human Geography Series, Cambridge University Press (1986-90); Editorial Boards, *Annals of the AAG* (1982-84), *Canadian Geographer* (1989-2001), *Canadian Journal of Urban Studies* (1996-2000, 2004-09), *Cultural Geographies* (2002- ), *Ecumene* (1992-2001), *Geographical Compass* (2007- ), *Global Networks* (2007- ), *Journal of International Migration and Immigration* (1999-2009), *Social and Cultural Geography* (1999-2005), *Society and Space* (1982-89), *Urban Geography* (1990-2007).

**Honors, Awards, Grants:** AAG Distinguished Scholarship Award (2009), Canada Research Chair of Geography (2001-07; 2008-14), Visiting Chair of Geography, King's College, Univ. London (2008-11), Ralph Brown Day Lecture, Univ. Minnesota (2007), Hooker Distinguished Visiting Professor, McMaster Univ (2005), Trudeau Foundation Fellow (2003-06), Distinguished Scholar Award, AAG Ethnic Geography Specialty Group (2004), Distinguished Professor in Residence, Peter Wall Institute of Advanced Studies, UBC (2003), *Progress in Human Geography* Lecture (2003), Von Humboldt Visiting Scholar, Univ. Nijmegen, Netherlands (2002), Christensen Fellow, Univ. Oxford (2000), Meyer Fellow, National Univ. Singapore (1999), Killam Graduate Mentoring Prize, UBC (1999), Elected to the Royal Society of Canada (1998), Wiley lecture, CAG-RCCS (1998), Hosler Alumni Scholar Medal, Pennsylvania State Univ. (1995), Fellowship, Japan Society for the Advancement of Science (1993), Award for Scholarly Distinction in Geography, CAG (1988). Other Visiting Professorships: Univ. Neuchatel, Switzerland (2007), Hitotsubashi Univ., Japan (1993), Hebrew Univ., Jerusalem (1986), Cambridge Univ. (1986). UBC Director of the Vancouver Centre of the Metropolis Project on Immigration and Integration, \$2m 1996-2002, renewed 2002-07; other funding from the Social Science and Humanities Research Council, Trudeau Foundation, Province of British Columbia, and others.

Vice President (one to be elected)

**Professional Experience:** Head, Department of Geography, UBC (1987-8, 2009- ), Chair, Geography Graduate Program, UBC (1994-6, 2006); numerous review and selection committees; many media interviews; taught at all levels from first year to graduate; supervised over 50 MA/PhD theses, completed or in progress; partnerships with NGOs and government.

**Research and Teaching Interests:** Urban, social and cultural fields of human geography, especially immigration, urbanization, diversity, inequality, state policy, gentrification, and housing markets.

**Publications:** Ten authored/edited books, including *Millionaire Migrants* (2010), *The New Middle Class and the Remaking of the Central City* (1996), and *Place/Culture/Representation* (edited with J. Duncan, 1993). Over 100 journal articles and book chapters, including papers in the *Annals of the AAG*, *Transactions*, *Inst. British Geogr.*, *Canadian Geographer*, *Die Erde*, *Progress in Human Geography*, *Society and Space*, *Urban Studies*, *Urban Geography*, *Global Networks*, *Economic Geography*, *Journal of Ethnic and Migration Studies*, *Housing Studies*.

**Statement:** It would be a privilege to represent Geography through the offices of the AAG. I value the discipline's achievements and am convinced of its scholarly importance in speaking to these difficult times. In international research partnerships and discussion—across disciplines, with government agencies, with NGOs, and with the media—my experience is that geography's integrative perspective on place, space and nature at different scales is resilient and persuasive; its techniques of cartography and GIS provide illuminating insights. Before such challenges as climate change and environmental impacts, globalization, economic crisis, global geopolitics, public health, cultural diversity and social inclusion, geographic training and learning have much to offer. Increasingly our best scholarship integrates North American and international research, and internationalization should be increasingly present in our conferences and journals. Geography's best scholarship needs to be visible to broader audiences in government, the private sector and civil society, to aid the development of healthy departments and fulfilling employment for graduates in a fiscally challenging period. The insights of geographers enhance intellectual life at all post-secondary levels—from community colleges to elite private universities—and I will endeavor to advance the discipline's status in these arenas.



**ERIC S. SHEPPARD.** Regents Professor of Geography, and co-director of the Interdisciplinary Center for the Study of Global Change, University of Minnesota. Ph.D. and M.A., University of Toronto (1976, 1974); B.Sc. Hons, Bristol University (1972).

**Service to Geography:** Member and Chair, AAG Honors Committee (2009-); Vice Chair and Chair, AAG Economic Geography Specialty Group (2000-2004); Chair, AAG Socialist Geography Specialty Group (1990-91, 1980-82); Member, AAG Program Committee (1986); Board of Directors, Urban Geography Specialty Group (1985-88); Organizing committee, AAG Socialist Geography Specialty Group, AAG Transportation Geography Specialty Group. Member, Advisory Board, UCGIS Body of Knowledge

Curriculum Project (2005-6); Member, National Research Council (NRC) Committee on Geography (1998-2002); Member, NSF Geography and Regional Science panel (1988-2000); Chair, NCGIA Geographies of the Information Society Panel (1997-99); Member, NCGIA Board of Directors (1993-96); Member, NRC 'Rediscovering Geography' Committee (1993-5); Member, NCGE Education Standards Advisory Board (1993-5). Co-Editor: *Environment and Planning A* (1998-present), *Antipode* (1985-91). Editorial Boards: *Annals AAG* (1981-84; 1997-99, 2005-9), *The Canadian Geographer*, *Human Geography*, *Dialogues in Human Geography*, *Economic Geography*, *Journal of Economic Geography*, *Geographical Analysis*, *The International Regional Science Review*, *Éspaces et Sociétés*, *Journal of the Economic Geographical Society of Korea*. Co-organizer of seven international geography conferences and workshops.

**Honors, Awards, Grants:** Fellow, Center for Advanced Studies in the Behavioral Sciences (2005-6); University of Tennessee, Ed Hammond Lecture (2009); Supporting Women in Geography graduate advising award, University of Minnesota (2009); The University of Wisconsin Milwaukee Harold Mayer Lecturer (2005); Distinguished Alumnus Award, University of Toronto (2004); The Ohio State University David Robinson Lecturer (2003); Fesler-Lampert Professor, in the Humanities, University of Minnesota (2002-4); The University of Kentucky Ellen Churchill Semple Lecturer (2002); The Clark University Wallace Atwood Lecturer (2002); Scholar of the College of Liberal Arts (2001-4); Distinguished Scholarship Honors, AAG (1999); Howard G. Roepke Lecture in Economic Geography (1990). Recipient of approximately thirty grants for research, instruction and graduate education (\$1,800,000), from NSF, the Mellon Foundation and other sources.

**Professional Experience:** Chair, Department of Geography, University of Minnesota (1990-93), Director, Masters of Development Practice (2010-). Visiting Professorships: University of Amsterdam, National University of Singapore, Bristol University, University of Vienna, Business University of Vienna, Melbourne University, University of Indonesia. Visiting Scholar: International Institute of Applied Systems Analysis.

**Research and Teaching Interests:** Geographical political economy, uneven geographies of globalization, urban politics and policy, geographic information technologies and society, geographical philosophy and method, environmental justice, social movements.

**Publications:** Co-authored or edited ten books, including *The Capitalist Space Economy*, *A World of Difference*, *Scale and Geographic Inquiry*, *The Companion to Economic Geography*, and *Politics and Practice in Economic Geography*. Author or co-author of over 150 articles in refereed journals and book chapters in, e.g., *Annals AAG*, *The Professional Geographer*, *The Canadian Geographer*, *Transactions of the Institute of British Geographers*, *Progress in Human Geography*, *Antipode*, *Environment and Planning A*, *Cartography and GIS*, *Cartographica*, *Economic Geography*, *The Journal of Economic Geography*, *Society & Space*, *Geographical Analysis*, *The Journal of Regional Science*, *Urban Geography*.

**Statement:** At this time, with the world facing immense challenges, critical and creative research, teaching, and outreach are vital. By making a commitment to global engagement, Geography is ideally placed to

Continued on page 18



Vice President (one to be elected)

play a leadership role. Geography remains my passion because of the diversity of scholarship that it embraces. This makes our discipline an ideal starting point for effectively addressing such 'wicked' problems as the inter-linked nature of climate change, market-led globalization, persistent poverty and marginalization. Thus we can and must work toward enhancing rigorous mutual engagement between seemingly separate sub-areas of the discipline. Inclusiveness is also key: We can and must work to maximize the diversity of the situated perspectives, imaginaries and experiences incorporated into Geography. This means recommitting to diversifying our membership, attracting non-whites and other under-represented communities to join our project, and

engaging with disadvantaged communities beyond the academy. Our annual meeting's status as Geography's global meeting place can become the basis from which US geographers also learn from the expertise and perspectives located outside our Anglophone academy, working with local experts around the world to understand the reciprocal inter-relations between localized events and larger-scale processes. Geography must remain strong throughout public university cutbacks. Through our healthy departments initiative we can share strategies for success and learn from failures. We should lead in strengthening our universities' and colleges' international initiatives, while making Geography exciting and relevant to all public school students.

## NATIONAL COUNCILLOR (two to be elected)



**VINCENT J. DEL CASINO JR.** Professor and Chair, Department of Geography, California State University, Long Beach. PhD (Geography, University of Kentucky, 2000), MS (Geography, UW-Madison, 1995), BA (International Relations/East Asian Studies, Bucknell University, 1990).

**Research and Teaching Interests:** Social, cultural, and health geography; geographic thought, history, and methodology; HIV/AIDS, homelessness and drug use politics; HIV/AIDS prevention and care in Southeast Asia and United States.

**Professional Service:** AAG Membership Committee, 2010-present; Book Review Editor, *Social and Cultural Geography*, 2005-2010; Editorial Board Member, *Social and Cultural Geography*, 2011-present; Editorial Board Member, *Dialogues in Human Geography*, 2010-present; Paper Organizer for Sexuality and Space Subgroup (AAG), 2003-2004; Review work for, NSF, USA; SSRC, UK; NRF, South Africa; Reviewer for Journals (e.g., *Annals of the Association of American Geographers*, *Antipode*, *Society and Space*, *Gender, Place, and Culture*, *Geoforum*, *Health and Place*, *Journal of Geography*, *Political Geography*, *Professional Geographer*, and *Social and Cultural Geography*); Association of Pacific Coast Geographers (Co-Chair, APCG Annual Meeting, 2007; Chair, Membership Committee, 2005-2006, 2008-2009; Member, Membership Committee, 2004-2005; Organizer, Writing Workshop for Graduate Students, APCG Annual Meeting, San Diego, CA 2009).

**Select Honors, Grants, and Awards:** Glenda Laws Award, AAG, 2004; Principal or Co-Principal Investigator on Grants Awarded from Universitywide AIDS Research Foundation (2002-2004), Metrans Transportation Center (2006-2007); National Science Foundation (1998-1999); Awarded Scholarship to attend XV International AIDS Conference, Bangkok, Thailand (2004).

**Select Publications:** Books: *Social Geography: A Critical Introduction* (2009); *A Companion to Social Geography* (2011) co-edited with Mary Thomas, Ruth Panelli, and Paul Cloke; *World Regions in Global Context, 4<sup>th</sup> Edition* (2011) with Sallie Marston, Paul Knox, Diana Liverman, and Paul Robbins; *Mapping Tourism* (2003), co-edited with Stephen Hanna. Articles in: *ACME*, *Antipode*, *Environment and Planning A*, *Geoforum*, *Geographical Review*, *Health and Place*, *The Professional Geographer*, *Progress in Human Geography*,

and *Social and Cultural Geography*, among others. Books chapters and encyclopedia entries in the following fields: Sociology, Tourism Studies, Environmental Studies, Asian Studies, Medical Geography, Southeast Asian Studies, Health and Health Care, and Sexuality Studies.

**Statement:** As an academic organization we are not immune to the challenges presented to higher education in the 21<sup>st</sup> century. These include the restructuring of university life and the re-imagining of disciplinary practices within academic institutions. As universities come under assault and disciplines are questioned as to their 'relevance' in this unstable political and economic climate, it is critical that the discipline of geography remain cognizant of its intellectual diversity, offering itself as an ideal space through which to offer both basic and applied research addressing the political complexities of the communities in which we do our work. This leads me to offer three core goals that I believe should be the cornerstone of AAG outreach moving forward. (1) The AAG needs to develop a wider conversation about collaborative research between graduate *and* undergraduate students as well as between faculty and students in disciplinary and interdisciplinary context. This should result in a concerted effort to mentor new geographers who can continue to address issues of relevance to our field. (2) The AAG should increasingly promote, with partners in the National Science Foundation and other research organizations, collaboration between AAG members and community organizations outside our member academic institutions. This would enhance the ability of the AAG, and its membership, to expand on the diversity of research that engages issues of local and global significance, such as climate change, health care accessibility, and everyday issues such as mobility, democracy, and equality. (3) The AAG should use its national and international presence to increase collaboration across predominantly undergraduate, master's granting, and doctoral granting programs. As an organization, we should harness the incredible dedication to teaching and scholarship that takes place across a wide variety of institutions, creating new networks of talented scholars and practitioners who can draw more effectively on a wider network of support to do their work. In short, the AAG can, and should, increase the degree to which it fosters collaboration across different institutions and constituencies in the future. If elected, I hope to help showcase what we are already do so well as an organization and how we might build on our best practices to create a vibrant organization that is supportive of an expanded geography presence in our national and international member institutions moving forward.

National Councillor (two to be elected)



**MINELLE MAHTANI.** Associate Professor, Department of Geography and Planning, and Program in Journalism, University of Toronto Scarborough (2009-present). PhD (Geography) University College London (2000), BA (Honours Anthropology) Dalhousie University (1993).

**Professional and Administrative Experience:** President, Association for Canadian Studies (2009-present), Chair, Governance Board, Centre for Excellence on Research in Immigration and Settlement - Ontario Metropolis Centre (2008-2010) Academic Steering Committee Member, School of Journalism, UBC (2007-present), GFDA (Geography Faculty Development Alliance) Workshop Leader (2006-2008), Treasurer, GPOW - Geographical Perspectives on Women Speciality Group (2000-2002)

**Other Professional Experience:** Canadian Broadcasting Corporation national television news producer, "The National" (1993-1998), Associate Producer, "Canada: A People's History" (1998-1999), Mellon-Sawyer Postdoctoral Fellow, University of North Carolina-Chapel Hill (1999-2000), Killam Postdoctoral Fellow, Department of Geography and School of Journalism, UBC (2000-2002), Strategic Counsel, IMPACS (Institute for Media, Policy and Civil Society, 2002-2003), Adjunct Professor, Department of Geography, UBC (2002-2003), Visiting Professor, Media Studies, Lang College, New School University (2003-2004), Assistant Professor, Department of Geography and Planning, and Program in Journalism, University of Toronto Scarborough (2004-2009), numerous consulting and advisory board positions with federal and provincial government including Canadian Heritage, Citizenship Immigration Canada, Canadian Military College, City TV, CBC, National Film Board, Ministry of Multiculturalism and Immigration among others.

**Teaching and Research Interests:** Social, cultural, feminist and critical geography, critical race/mixed race theory, critical immigration studies, multicultural planning, Canadian studies, geographies of citizenship, anti-racism, equity and diversity in the academy, critical journalism, media and minority representation

**Select Publications:** Roberts, David and Minelle Mahtani 2010. "Neoliberalizing Race, Racing Neoliberalism" in *Antipode*, Mahtani, Minelle 2009, "Critiquing the Critiques about Media and Minority Representation in Canada" in *Canadian Journal of Communication*, Mahtani Minelle 2009, "The Racialized Geographies of News Consumption and Production: Contaminated Memories and Racialized Silences" in *GeoJournal*, Mahtani Minelle 2009, "Teaching for Diversity: Teaching for Inclusion" in Foote, Ken, Michael Solem and Jan Monk (eds) *Aspiring Academics: A Resource Book for Graduate Students and Early Career Faculty*, Mahtani, Minelle 2007, "Spatializing Storytelling: Contemporary Post-Binary Geographies of News Discourse" *Aether, a Journal of Media Geography*, Mahtani, Minelle 2006, "Challenging the Ivory Tower: Proposing Anti-Racist Geographies in the Academy" (special issue editor), *Gender, Place and Culture*, Mahtani, Minelle 2004, "Mapping Gender and Race in the Academy: The Experiences of Women of Color Faculty and Graduate Students in Geography" *Journal of Geography in Higher Education*. Articles in *Environment and Planning D: Society and Space*, *Social Identities*, *Ethnicities*, *Great Lake Geographer*, *Journal of Higher Education*, *Canadian Ethnic Studies*,

*Progress in Planning*, contributor to the following books: *Key Thinkers on Space and Place*, *Journalism: Critical Issues*, *Rethinking Mixed Race*, *Encyclopedia of Geography* among others. Co-editor with Paul Spickard, Rebecca O'Riain, Miri Song and Stephen Small, *Global Mixed Race* (forthcoming).

**Relevant Honours:** Fellow, Royal Canadian Geographical Society (2009-present), Massey College Senior Fellow (2009-present), Distinguished Visiting Speaker, University of California-Northridge (2008), Certificate of Excellence, University of Toronto (2006), Four Teaching Citations for Excellence in Teaching, University of Toronto Scarborough (2006-2008).

**Statement:** Geography fascinates me because our discipline is ideally situated to inform rapidly shifting social, political and environmental debates. My expertise lies in building bridges between the academy and other centers of knowledge, like the policy, media and not-for-profit worlds. If elected, I will use my experience as a former national television news producer to enhance geography's public profile. I will help AAG members leverage their own areas of expertise in an era of specialized knowledge economies. I will also encourage bilateral and multilateral knowledge exchange between the AAG and other organizations. As an AAG National Councillor, I will promote public awareness of the value and importance of geographic literacy. I believe in improving the quality of geography teaching and learning. My passion is in the area of diversity and equity, and I am particularly committed to fostering mentoring and leadership opportunities for geographers from marginalized backgrounds. Finally, I hope to contribute to ongoing processes of internationalization in the AAG towards transparent and sustainable intellectual reciprocity between countries.



**JAMES A. TYNER.** Professor of Geography, Kent State University. PhD (University of Southern California, 1995), M.A. (San Diego State University), B.A. (California State University Long Beach).

**Service to Geography and the AAG:** Chair, Asian Geography Specialty Group (2008-2010); Editorial Board, *The Geography Journal* (2009-present); Secretary, Asian Geography Specialty Group (2006-2008); Editorial Board, *Journal of Military Geography* (2007-present); Board Member, Military Geography Specialty Group (2007-2010); President, Population Specialty Group (2004-2005); Vice-President, Population Specialty Group (2004-2005); Co-Chair, Sexuality and Space Specialty Group (2001-2003); Southeast Asia Director, Asian Geography Specialty Group (2001-2005); Board Member, Population Specialty Group (2000-2003); Faculty Sponsor, Gamma Theta Upsilon, Kent State University (1998-2001); Editorial Board, *The Professional Geographer* (1999-2000); Regional Councilor, Gamma Theta Upsilon, East Lakes Division (1998-1999).

**Honors and Awards:** AAG Meridian Book Award (2010); Finalist, Distinguished Scholar Award, Kent State University (2010); James Blaut Award (2010); Glenda Laws Award (2007); Julian Minghi Award, Political Geography Specialty Group (2006); key note speaker at the 5<sup>th</sup> *International Conference on Population Geography* (Dartmouth College, 2009);

Continued on page 20

National Councillor (two to be elected)

plenary speaker, *Southeast Asian Geography Association Conference* (Manila, 2008).

**Teaching and Research Interests:** Population Geography, Political Geography, Social Geography; emphases on violence, war, militarism, genocide, international migration, and globalization.

**Publications:** Author of ten books, including *Military Legacies: A World Made by War* (New York, Routledge, 2009), *War, Violence, and Population: Making the Body Count* (New York, Guilford, 2009), *The Killing of Cambodia: Geography, Genocide, and the Unmaking of Space* (Aldershot, Ashgate, 2008), and *The Geography of Malcolm X: Black Radicalism and the Remaking of American Space* (New York, Routledge, 2006); author of approximately 50 articles and book chapters appearing in *Annals of the Association of American Geographers*; *Transactions of the Institute of British Geographers*; *Gender, Place and Culture*; *The Professional Geographer*; *Area*; *Antipode*; *American Behavioral Scientist*; *Asia Pacific Viewpoint*; *Geographical Review*; *Journal of Geography*; *Environment and Planning D*; *Social and Cultural Geography*; *Geography Research Forum*; *Asian Pacific Migration Journal*; *Asian Geographer*; *Singapore Journal of Tropical Geography*; and *Philippine Population Journal*.

**Statement:** Over the course of my career I have been involved in several synergistic activities in which I have contributed to my home university, department, the wider discipline of Geography, and my local community. As one example, I currently serve on the steering committee for my daughter's elementary school as it attempts to become accredited within the International Baccalaureate Program. Through my participation, I have worked to more fully incorporate the teaching of Geography within the grade school level. At Kent State University, likewise, I have worked to broaden the geographic horizon of our student body, through overseas field trips to Southeast Asia, and through my participation with university-community panels on racism and the Iraq war. As National Councillor I will continue my efforts to expand the scope of Geography, both to K-12 education and the community more broadly; I am interested in the possibility of facilitating connections between the AAG, elementary schools, and local communities, to bring students (especially) outside of the classroom to experience the implications of a globalizing world.



**RICHARD A. WRIGHT.** Dartmouth College. Professor of Geography and Latin America, Latino, and Caribbean Studies; Orvil Dryfoos Professorship in Public Affairs; Mellon Mays Undergraduate Fellowship Program Coordinator. B.Ed. University of Nottingham; M.A. Indiana University; Ph.D. Indiana University.

**Areas of Expertise:** Immigration; racialization; mixed-race studies; labor markets; housing markets; migration; transnationalism.

**Selected Works:**

"Spatial Assimilation and the Household: Partnership, Nativity, and Neighborhood Location," with M Ellis and V Parks, *Urban Geography*, 27:1 (2006) 1-19.

"Places of Possibility: Where Mixed-Race Couples Meet," with S Houston, et al., *Progress in Human Geography*, 29:6 (2005) 1-18.

"Assimilation and the Differences Between the Settlement Patterns of Individual Immigrants and Immigrant Households," with M Ellis, *Proceedings of the National Academy of Science*, 102:43 (2005) 15325-15330.

"Partnering 'Out' and Fitting In: Residential Segregation and the Neighborhood Contexts of Mixed-Race Households," with S Holloway, M Ellis and M Hudson, *Population, Space, and Place*, 11:4 (2005) 299-324.

"Re-placing Whiteness in Spatial Assimilation Research," with M Ellis and V Parks, *City and Community*, 4:2 (2005) 111-135.

**Current Projects:** "Mixed Households, Immigration, and the Negotiation of Urban Space;" "Contextualizing the Racial Claims made by Parents of Multiracial Children in the 1990 Census;" "Mixed-race Households and Residential Segregation;" "Spatial Accessibility and Immigrant Employment Niching in Los Angeles;" "Employment Concentrations and Residential Segregation: the Home-Work Arrangements of Immigrants in Los Angeles;" "Black/White Households in the Context of Racial Segregation: Scale and Spatial Effects."

## AAG NOMINATING COMMITTEE (three to be elected)



**KATIE ALGEO.** Associate Professor of Geography, Western Kentucky University. PhD (Louisiana State University, 1998), B.S. (Duke University, 1984).

**Service to Geography:** Board, Pioneer America Society (2011), Board, Friends of Dumont Hill Civil War Site Preservation Organization (2008-present), Treasurer, SEDAAG (2007-2009), Chair and

Member, SEDAAG Honors Committee (2005-2006), Editorial Board, *Southeastern Geographer* (2004-2006), Kentucky State Representative, SEDAAG (2002-2003), Web Master, AAG Rural Geography Specialty Group (2000-2004), Board, AAG Rural Geography Specialty Group (1998-2004), Judge and Moderator, Kentucky State Geography Bee (2002-2010).

**Honors, Awards and Grants:** Filson Historical Society Fellowship (2008), National Endowment for Humanities Grant (2005), Dissertation Fellowship, Louisiana State University (1996-1997), Regents Fellowship, Louisiana State University (1991-1995)

**Research and Teaching Interests:** Cultural, historical, and rural geography with a focus on the U.S. South, historical GIS, public memory, tourism geography. I am currently researching and writing a book on the historical geography of tourism to Mammoth Cave.

**Other Professional Experience:** Software Engineer, Centrum voor Wiskunde en Informatica, Amsterdam (1988-1989), Project Leader and Software Engineer, Data General Corporation, RTP, NC (1984-1988, 1989-1991).



AAG Nominating Committee (three to be elected)

**Publications:** Two chapters in books on rural geography, articles in *International Journal of Applied Geospatial Research* (forthcoming), *Journal of Geography*, *Southeastern Geographer*, *Material Culture*, *Southern Cultures*, and *The North Carolina Geographer*.



**WALKER S. ASHLEY.** Associate Professor of Geography, Department of Geography, Northern Illinois University. Ph.D. (University of Georgia, 2005), M.S. in Geosciences (University of Nebraska-Lincoln, 2000), B.S. (University of Georgia, 1997), American Meteorological Society Certified Consulting Meteorologist (CCM).

**Research and Teaching Interests:** I am a physical geographer with interests in atmospheric hazards and societal interactions, mesoscale meteorology, applied meteorology/climatology, and the application of GIS in meteorology. I have investigated the casualty geographies of variety of weather hazards, storm morphology of hazardous thunderstorm events, climatology of widespread and long-lived windstorms known as derechos, rainfall patterns of thunderstorm complexes in the U.S., impacts of increasing population and suburban sprawl on tornado vulnerability, and urban enhancement of thunderstorms in the Southeast U.S. My teaching responsibilities include courses in natural hazards, meteorology, mesoscale meteorology, and severe storms.

**Publications:** Author or coauthor of research papers in *The Professional Geographer*, *Bulletin of the American Meteorological Society*, *International Journal of Climatology*, *Monthly Weather Review*, *Weather and Forecasting*, *Meteorological Applications*, *Journal of Applied Meteorology and Climatology*, *Natural Hazards Review*, *Natural Hazards*, and *Weather, Climate, and Society*.

**Grants:** Research funding from NSF and local sources.



**SCOTT FREUNDSCHUH.** Professor and Chair of Geography, University of New Mexico. Employed at UNM since August 2010. Program Director for Geography and Spatial Sciences and Technical Coordinator for the Spatial Intelligence & Learning Center at the National Science Foundation 2008 - 2010. Associate Professor and Chair in Geography at the University of Minnesota Duluth 1994-2010. Assistant Professor of Geography at Memorial University of Newfoundland 1990-1994. PhD, Geography, 1992, State University of New York at Buffalo. Member of the AAG since 1985.

**Service to Geography and the AAG.** I am currently a member of AAG's Grants and Awards Committee and served on the local organizing committee for the 2010 AAG meetings. I have also served as board member and Chair of the Cartography Specialty Group and the Environmental Perception and Behavioral Geography Specialty Group of the AAG. I am currently the President of the Cartography and Geographic Information Society and the new Managing Editor of the journal *Cartography and Geographic Information Science*. I served as Editor of *Cartographic Perspectives* from 2000-2007, and was on the board of the North American Cartographic Information Society from 2005 to 2008. I have served on various Scientific Committees for GIScience 2010, for the Conferences on Spatial Information Theory in 1999, 2001 and 2003, and

co-lead (with Holly Taylor, Psychology at Tufts) the NCGIA Varenius Project Specialist Meeting *Multiple Input Modes and Multiple Reference Frames for Spatial Knowledge*.

**Teaching and Research Interest:** I have taught courses in cartographic theory, map and graphic design, multimedia and animated maps, and GIScience theory and application. My research interests are in the field of spatial cognition. I have conducted studies on the role that sources of spatial information, such as maps and navigation play in cognition and learning, have explored the development of spatial concept understanding in small- and large-scale spaces, and have tested the use of novel map representations to perform spatial tasks such as navigation and location tasks. My work is clearly interdisciplinary, involving research relevant to behavioral geography, cognitive psychology and GIScience in general. At UNM I will be teaching courses within the graduate GIScience program.

**Publications:** I've co-edited a book (with Rob Kitchen) on cognitive mapping, and have numerous publications in various journals including the *Professional Geographer*, for which I have a forthcoming piece on the Federal Perspective on IRB Processes for Social and Behavioral Sciences, *Cartographica*, *The Cartographic Journal* and *Geographical Systems* as examples. I also have various publications in research texts about cartography and GIScience.

**Honors, Awards and Grants:** Most notably, my research has benefited from funding from NSERC and SSHRC in Canada, NATO (PI Mike Gould), the NCGIA, the Minnesota Department of Children, Families and Learning for a Lab School Grant on technology integration in the curriculum, and from the University of Minnesota & the University of Sheffield, UK to study the acquisition of spatial concepts from age 3 to adulthood.



**JAMES W. (JW) HARRINGTON.** Professor of Geography, University of Washington. Affiliate Professor in UW's Canadian Studies program and in the Interdisciplinary Urban Design & Planning Ph.D. program. Previous academic positions at George Mason University and the University at Buffalo (SUNY). Ph.D. & M.A. in Geography (University of Washington, 1983 & 1980); A.B. in Urban Studies (Harvard University, 1977). Member of the AAG since 1983.

**Service to Geography and the AAG:** Content Advisory Committee for the National Geography Standards Project, 1992-94; National Councilor of the AAG, 1994-97; Director of the National Science Foundation Geography & Regional Science Program, 1994-97; Rediscovering Geography committee of the National Academy of Sciences, 1994-95; Secretary of the AAG, 1995-97; AAG Centennial Coordinating Committee, 1997-2004; Chair of the AAG Economic Geography Specialty Group, 1998-2000; Chair of AAG Affirmative Action & Minority Status Committee, 1998-2000; Co-chair of the joint AAG/AGS Business, Industry, and Government Affinity Group, 1999-2001; US representative to the IGU Commission on the Dynamics of Economic Spaces, 2000-08; Vice-President, President, & Past President

Continued on page 22

AAG Nominating Committee (three to be elected)

of the Association of Washington Geographers, 2001-07; Chair of AAG Nominating Committee, 2005-06; AAG Enhancing Departments & Graduate Education committee, 2008-09; AAG Healthy Departments committee, 2008-10; co-organizer of the annual Geography Faculty Development Alliance workshop, 2008-11; co-chair of the 2011 AAG annual meeting Local Arrangements Committee, 2010-11.

**Teaching and Research Interests:** My specialization has always been the process of and influences on sub-national, regional economic development. I have focused on the reproduction and employment of labor; the growth and distribution of service industries; the role of corporate and business strategy in location and local impact; and the implications of international economic integration for sub-national regional economic development. The courses I have taught most often include the geography of international trade, location theory, geographies of marketing and retail, and regional economic development theory.

**Publications.** I've co-authored one book and have co-edited five books. I've written over 30 published articles and chapters.

**Other Professional Experience:** For several years of my career, I've focused on non-academic roles that support the work of our academic colleagues. I directed the Geography & Regional Science program at the National Science Foundation for three years; during the last of those years I also served as Science Policy Office for the Social, Behavioral, and Economic Sciences directorate. I served as Geography department chair at UW from 2000-05. More recently, I spent three years as the University of Washington's Faculty Legislative Representative to the state Legislature and state policy bodies. I am now chairing the UW Faculty Senate, and on the search committee for our next president.



**KEITH G. HENDERSON.** Associate Professor, Villanova University (1999-present). PhD. (University of North Carolina-Chapel Hill, 1991), M.S. (The Pennsylvania State University, 1988), B.S. (The Pennsylvania State University, 1986). Assistant/Associate Professor, Louisiana State University (1991-1999).

**Service to Geography and the AAG:** AAG Council (2006-2009). AAG Ad-Hoc Task Force to update the Statement on Professional Ethics (2009). Middle States Division of the AAG - Regional Councilor (2006-2009), President (2003-2004), Vice-President (2002-2003), and Secretary (2001-2002). Organizer and Host, Annual Meeting of the Middle States Division of the AAG (2004). Local Support Committee for 100th Annual AAG Meeting (2004). President, Delaware Valley Geographic Association (2003-2004). Board of Directors, Climate Specialty Group of the AAG (2001-2003). Board Member of Amer. Meteor. Society Committee on Applied Climatology (1997-2000). Committee to establish a new Department of Geography and the Environment at Villanova University (2006).

**Teaching and Research Interests:** My research interests are in the areas of climatology and environmental change. I am particularly interested in the spatial and temporal patterns of climate variability. My past work has focused on both the synoptic circulation patterns associated with

climate variations and the environmental impacts of these patterns on water resources and biological activity. I am currently examining the impacts of climate variations on biological seasonality. At Villanova I also teach courses in Natural Hazards, Natural Resources, Global Change, and Geographic Methods.

**Publications:** Author or Co-Author of research papers in journals such as *The Professional Geographer*, *Physical Geography*, *Climate Research*, *Journal of Climate*, and *International Journal of Climatology*, as well as numerous proceedings, invited lectures, and conference presentations.

**Honors, Awards and Grants:** Recognized with a number of teaching awards at both Villanova and Louisiana State including the Amoco Award as LSU's Outstanding Undergraduate Teacher (1996). Villanova Team Service Award for activities of the Campus Environment Team (2005). Course Award from the National University Continuing Education Association (1993). Past research funding through NOAA's Regional Climate Center program.



**SUSANNE C. MOSER.** Director and Principal Scientist of Susanne Moser Research & Consulting; Social Science Research Associate, Woods Institute for the Environment, Stanford University, and Research Associate, Institute for Marine Sciences, University of California-Santa Cruz. PhD, Geography, 1997, Clark University. Post-doc at Harvard's Kennedy School of Government and the Heinz Center in Washington, DC. Visiting assistant professor at Clark University. Staff scientist for the Union of Concerned Scientists (1999-2003) and the National Center for Atmospheric Research (2003-2008). Member of the AAG since 1992.

**Service to Geography and the AAG:** From 1998-2002, member of the Board of Directors of the AAG Human Dimensions of Global Change Specialty Group; 2000-02 HDGC Secretary/Treasurer; 2002-04 HDGC Chair; 1999-2002, member of the Board of the Hazards Specialty Group; 2005-08, member of the AAG Scientific Freedom and Responsibility Committee.

Since 2009, I am a Member of the National Research Council's standing Geographic Sciences Committee. I represent the interests and perspectives of geography in a number of interdisciplinary forums, including the Scientific Committee of the International Human Dimensions Program (2011-), the Federal Advisory Committee for the National Climate Assessment, the Climate Change Adaptation Expert Advisory Group, ICLEI USA (2010-11), the NRC Committee on Addressing the Challenges of Climate Change through the Behavioral and Social Sciences (2009-10), the NRC America's Climate Choices Science Panel (2008-10), the NRC's Panel on Strategies and Methods for Climate-Related Decision Support (2007-09), Scientific Advisory Team for the Community and Regional Resilience Institute (2007-), and the Committee on Public Understanding of Science and Technology, American Association for the Advancement of Science (2007-11).

I have reviewed manuscripts for leading geographic journals (including the AAG Annals, Geoforum, Geography Compass, Physical

AAG Nominating Committee (three to be elected)

Geography, Local Environment, Regional Studies, and Urban Studies), and 17 other journals.

**Research and Teaching Interests:** My primary research interests fall into three distinct but interrelated aspects of the human dimensions of global change: (1) vulnerability, impacts, and adaptive responses to climate change, (2) effective communication of climate change to engage lay publics and facilitate social change, and (3) decision support and stakeholder engagement.

Despite limited formal teaching opportunities, I am a passionate teacher and have helped develop hands-on teaching materials and strategies. I was a faculty leader for the Geography Faculty Development Alliance summer workshops in 2006 and 2007 for early career geography faculty at the University of Colorado, Boulder. I frequently guest lecturer at universities, provide trainings in my areas of expertise, and advise students from the US, Europe, and Australia. The recipient of excellent mentoring, I try to pay it forward to students at all stages of their education.

**Publications:** I have published 24 articles in peer-reviewed journals, including Science and PNAS; over 25 peer-reviewed book chapters; 20 peer-reviewed reports; one co-edited book on climate change communication (with L. Dilling, Cambridge University Press); two co-edited special journal issues; and I was a key contributor to three major NRC publications. Available at: <http://www.susannemoser.com>.

**Honors, Awards and Grants:** I currently serve as Review Editor for an IPCC Special Report on extreme events and adaptation, was a Contributing Author to the Fourth Assessment, and named a Lead Author for the Fifth Assessment (withdrawn). I am a fellow of the Donella Meadows Leadership Program (2007-08), Aldo Leopold Leadership Program (2005), the UCAR Leadership Academy (2005), the Global Environmental Assessment Project (1997, 1998); I received an Outstanding Graduate Student Award, Clark University (1997), and received a NSF Dissertation Award (1995). My research support has come from NSF, NOAA, EPA, DOE, ORNL, US Forest Service, the California Energy Commission, WWF, Pacific Council for International Policy, US Endowment for Forestry & Communities, and the Kresge and MacArthur Foundations.

## AAG HONORS COMMITTEE A (one to be elected)



**CRAIG E. COLTEN.** Carl O. Sauer Professor of Geography, Louisiana State University. Ph.D. (Syracuse University 1984), M.A. (Louisiana State University 1978), B.A. (Louisiana State University 1974).

**Research and Teaching Interests:** Historical geography, environmental geography, hazards, water resources, and the American South.

**Service to AAG:** Nystrom Award Committee (2009-10); Secretary (2007-2009); Southwest Regional Councillor (2006-2009); Local Arrangements Committee, New Orleans meeting (2003); Historical Geography Specialty Group, Chair (1995-9), Councillor (1987-89); Employment Opportunities and Career Development Committee (1998-2000), Chair (2000-2004).

**Other Professional Service:** Editor, *Geographical Review* (2007-present); U. S. Department of Interior, Strategic Sciences Working Group (2010-present); Local Arrangements Chair, American Society for Environmental History (2007); Co-Editor, *Historical Geography* (1999-2006); Illinois Historic Sites Advisory Council (1990-93), plus numerous editorial boards.

**Honors and Awards:** Carl O. Sauer Professorship, LSU; *Lindsay O'Connor Professor of American Institutions*, Colgate University, visiting distinguished professor (2009); AAG Media Achievement Award (2006); J.B. Jackson Prize (2006.); Fred B. Kniffen Book Award (2006); Towner Award, Illinois Humanities Council (1989).

**Publications:** Sole author: *Perilous Place and Powerful Storms: Hurricane Protection in Coastal Louisiana* (University Press of Mississippi 2009); *An*

*Unnatural Metropolis: Wrestling New Orleans from Nature* (LSU Press 2005); Co-author/editor: *Centuries of Change: Transforming New Orleans and Its Environs* (University of Pittsburgh Press 2000); *The Road to Love Canal: Managing Industrial Wastes Before EPA* (University of Texas Press 1996); *The American Environment* (Rowman and Littlefield 1992); plus articles in the *Geographical Review*, the *Professional Geographer*, *Urban Geography*, *Environmental History*, *Journal of Southern History*, the *Journal of Historical Geography*, *Technology and Culture*, *American Anthropologist*, and *Natural Hazards*.



**SUSAN W. HARDWICK** is Professor of Geography at the University of Oregon. PhD (University of California, Davis, 1986), MA (California State University, Chico, 1974), BS (Slippery Rock University, 1968).

**Research and teaching interests:** Urban, Cultural, and Social Geography focusing on immigration, identity, and cultural landscapes in North America; geographic education.

**Service to AAG:** Elected member - Nominations Committee (2009-10, 2006-07) and Honor's Committee (2002-04); appointed member - J.B. Jackson Book Award Committee (2002-2010), and Committee on Committees, Geography Education Materials Development Committee, Committee on the Status of Women; AAG Regional Councillor for the Association for Pacific Coast Geographers.

**Honors, Awards, and Grants:** Honors and awards: *Gilbert Grosvenor Honors for Geographic Education*, Association for American Geographers; *Distinguished Scholar Award*, AAG Ethnic Geography Specialty Group;

Continued on page 24



## AAG Honors Committee A (one to be elected)

*National Outstanding Mentor Award*, National Council for Geographic Education; *Statewide Outstanding Professor Award*, California State University System. Funded grants: National Science Foundation, U.S. Department of Education, National Geographic Society, National Council for Geographic Education, Government of Canada's Faculty Research Grant, Texas Endowment for the Humanities, Oregon Council for the Humanities; National Science Foundation Advisory Panel, Geography and Regional Science.

**Publications:** Books: *Twenty-First Century Gateways: Immigrant Incorporation in Suburban America* (Brookings Institution, 2008, with A. Singer, C. Brettell);

*Geography of North America: Environment, Political Economy, and Culture* (Prentice Hall, 2008, 2<sup>nd</sup> edition forthcoming, with F. Shelley, D. Holtgrieve); *Mythic Galveston: Re-inventing America's Third Coast* (The Johns Hopkins University Press, 2002); *Geography for Educators* (Prentice Hall, 1996, with D. Holtgrieve); *Russian Refuge: Religion, Migration, and Settlement on the North American Pacific Rim* (University of Chicago Press, 1993) and recent articles in refereed journals such as the *Annals of the Association of American Geographers*, *Geographical Review*, *National Identities*, *Journal of Geography in Higher Education*, and *Professional Geographer*.

## AAG HONORS COMMITTEE B (two to be elected)



**ERIC J. FOURNIER.** Professor and Department Chair, Department of Geography, Samford University. PhD (University of Georgia, 1996), M.A. (1990, University of Georgia), B.S. (Journalism/Geography, Syracuse University, 1986).

**Teaching/Research Interests:** urban/economic geography, geography education, spatial thinking.

**Professional Experience:** Samford University, Department Chair, 2002-2011; Associate Professor, 2002-2008; Assistant Professor, 1997-2002; University of Alabama Birmingham, Adjunct Appointment, 2002-2010. Kennesaw State University, Instructor, 1993-1996, University of Georgia, Temporary Assistant Professor, 1996-97

**Service to Geography:** Chair, AAG Commission on College Geography. Vice-President for Research, National Council for Geographic Education. Editorial Board, *Journal of Geography*. Editorial Board, *Journal of Geography in Higher Education*. Representative to GENIP (Geography Education National Implementation Project). Project Advisor, SPACE (Spatial Perspectives and Curriculum Enhancement, UC Santa Barbara). Many committees for Southeastern Division of the Association of American Geographers (SEDAAG) including Secretary/Newsletter Editor and Local Arrangements Chair for annual meeting (SEDAAG 2010 Birmingham). Workshop Leader, Geography Faculty Development Alliance. Active participant in International Network for Teaching and Learning Geography in Higher Education (INLT). Strategic Planning Committee, Alabama Geographic Alliance.

**Awards and Grants:** Distinguished University Teaching Award, NCGE; Honorary Life Member, University of Georgia Rugby Club; Academic Excellence and Geographic Information Sciences (AEGIS) Project, NSF-DUE-funded; Samford University Problem-based Learning Grant, Pew Charitable Trusts; AAG/NSF Travel Award to attend IGU meeting in Tunisia. Rotary International Group Study Exchange Team to India.

**Publications:** Approximately 30 publications including articles in *Journal of Geography in Higher Education*, *Journal of Geography*, *Southeastern Geographer*, *Journal of General Education*, *Planet*, and *Academic Exchange Quarterly*. Chapter on active learning in *Aspiring Academics* (AAG EDGE project).



**SARAH J. HALVORSON.** Associate Professor of Geography, The University of Montana, Missoula. PhD (University of Colorado, 2000), M.A. (University of Colorado, 1995), B.A. (St. Olaf College, 1990).

**Research and Teaching Interests:** Environmental hazards; water policy and governance; mountain geography; gender and international development; qualitative methods; children's geographies; regional geographies of the American West, Central Asia and the Caucasus, and South Asia.

**Service to AAG and Geography:** Member, Glenda Laws Committee, AAG, 2005-2007; AAG Great Plains/Rocky Mountain Division Regional Meeting, Missoula 2002, Local Arrangements Committee Member;

## Call for Papers

## Mapping Place

Organizers welcome proposals for 3-5 minute lightning talks and poster presentations for "Mapping Place: GIS and the Spatial Humanities," to be held Friday-Saturday, February 25-6, 2011, at the Interdisciplinary Humanities Center, University of California, Santa Barbara.

"Mapping Place" will examine the intersection between Geographic Information Systems (GIS) and the spatial turn in the humanities. Participants will describe their mapping projects in relation to humanities methodologies, research objects, and/or concerns. In particular, the conference will examine the contributions that GIS make to

our evolving ideas of place. Send a 500-word abstract and brief CV to [mappingplaceconference@gmail.com](mailto:mappingplaceconference@gmail.com) by January 24, 2011.

"Mapping Place" is sponsored by the Interdisciplinary Humanities Center and the Center for Spatial Studies at UC Santa Barbara. For further information please visit [www.ihc.ucsb.edu/mappingplace](http://www.ihc.ucsb.edu/mappingplace).

AAG Honors Committee B (two to be elected)

International Editorial Board, *Mountain Research and Development*, 2010; Editorial Board, *Pakistan Journal of Geography*, 2007-present; Editorial Board, *Journal of Mountain Science*, 2006-present.

**Honors, Awards, and Grants:** Association of Nepal and Himalayan Studies Senior Fellowship Award (2010); Inland Northwest Research Alliance Grant (Co-PI, 2009-2010); Denali Recent Achievement Award in Mountain Geography (2007); U.S. Department of Education International Research and Studies Materials Program Grant (2006-2009); The Winston and Helen Cox Educational Excellence Award (2004) Fulbright-Hays Group Projects Abroad Grant to Kyrgyzstan (2003); Montana Committee for the Humanities (2001); Woodrow Wilson-Johnson & Johnson Grant in Child Health (1999); Fulbright Research Grant to Pakistan (1997-1998).

**Publications:** Recent articles in *Disasters*, *Health and Place*, *Journal of Geography*, *Journal of Geoscience Education*, *Mountain Research and Development*, and *The Professional Geographer*. Book chapters in *Encyclopedia of Geography*, *Encyclopedia of Women and Islamic Cultures*, *Geographies of Muslim Women: Gender, Religion, and Space*, *Running on Empty: Pakistan's Water Crisis*, and *Teaching about the Islamic World*.

**Other Professional Experience:** Chair, Department of Geography, The University of Montana, Missoula (2006-2007; 2009-present).



**TIM HAWKINS.** Associate Professor of Geography, Department of Geography and Earth Science, Shippensburg University of Pennsylvania. PhD (Geography, Arizona State University, 2004), MA (Geography, Arizona State University, 2001), BA (Geography, Colgate University, 1998).

**Teaching and Research Interests:** hydroclimatology, urban climatology, three-dimensional visualization as pertains to education, research methods.

**Professional Service:** Regional Councilor to Gamma Theta Upsilon Geography Honor Society, Executive Board Member of the Pennsylvania Geographical Society, Cooperative Observer for the National Weather Service, Vice President of the Central Pennsylvania Clean Air Board, Representative to the Pennsylvania Environmental Research Consortium, Referee for 10 different journals and 3 different grant competitions.

**Honors and Awards:** Jack Benhart Research Award, Shippensburg University (2007, 2010); AAG Climate Specialty Group student paper award (2001, 2003); University Graduate Scholarship, Arizona State University (2001-2004); Regents Graduate Academic Scholarship, Arizona State University (1999-2001), Charles A. Dana Scholar and Alumnae Memorial Scholar, Colgate University, (1994-1998); several research, curriculum, and travel grants.

**Publications:** Twenty reviewed publications in journals including the Bulletin of the American Meteorological Society, Climate Research, The Geographical Bulletin, Geophysical Research Letters, International Journal of Climatology, Journal of Applied Meteorology, Journal of Arid Environments, Journal of Climate, and The Professional Geographer.



**JOSEPH PORACSKY.** Professor of Geography and Director, Center for Spatial Analysis and Research (formerly Cartographic Center), Portland State University. Ph.D. (University of Kansas, 1984); M.A. (University of Maryland, 1976); B.A. (Clark University, 1968).

**Research and Teaching Interests:** The urban forest, urban natural resources, cartography, numeric visualization, GIS, public/volunteer involvement, applied remote sensing.

**Professional Service:** City of Portland Urban Forestry Commission (Member, 1992-2001 and 2009-2012; Chair 1997-2001 and 2010-2012); President, Oregon Academy of Science (1987); Vice President, Oregon Academy of Science (1986); Co-Chair, Geography Section, Oregon Academy of Science (1984-86, 2004-07, 2009-); Member of Organizing Committee or Chair for more than 11 conferences in Portland area, ranging in size from 120 attendees (Association of Oregon Geographers Annual In-Service) to 2,700 (1987 AAG Annual Meeting, Portland); Member, Board of Directors, North American Cartographic Information Society (2001-03); Member, Editorial Board, Local Environment (1999-2008); Member, Editorial Board, Cartographic Perspectives (1998-2000); Urban Greenspaces Institute, Member, Board of Advisors (2002-present).

**Honors and Awards:** "Unsung Hero" Award, Office of the Dean of Students (2007); Achievement Award, Columbia Watershed Council (2004); John Eliot Allen Outstanding Teaching Award, College of Liberal Arts and Sciences (2003); Arboriculture Award, Pacific Northwest Chapter of the International Society of Arboriculture (2003); Bill Naito Community Trees Award, Portland Parks and Recreation (2002); Mamie Campbell Award, Outstanding Volunteer Contribution, Audubon Society of Portland (1990).

**Publications:** Author or co-author of 35 articles, chapters, technical reports and maps. Articles and chapters in *The Ecological City: Preserving and Restoring Urban Biodiversity*; *Journal of Arboriculture*; *Wildlife Conservation in Metropolitan Environments*; *Wild in the City: A Guide to Portland's Natural Areas*; *Metroscape*. Maps include *Trees of Laurelhurst Park* (2009); *South Park Blocks: Portland's Cultural, Historical and Educational Center* (2006); *Trees of Couch Park: A Map and Brief Description of the History of One of Portland's Most Unique Urban Parks* (1996); *Oregon Environmental Atlas* (1988). Technical Reports include *Metro Portland, Oregon Natural Areas Inventory: Phase 2 - Mapping, Field Surveys and Database Creation*; *Urban Forest Canopy Cover in Portland, Oregon: 1972 - 2002*; *Street Trees of Forest Grove, Oregon*; *Street Trees in the Urban Forest Canopy: Portland, Oregon*.

**Your AAG Election Ballot must be received by February 24, 2011.**

Please make sure to affix postage before mailing.

# Jobs in Geography

## UNITED STATES

### ALABAMA, MONTGOMERY.

Auburn University at Montgomery's Department of Sociology invites applications for a tenure track **Assistant Professor in Human Geography**. Proposed starting date for this position is August 15, 2011.

The University: Founded in 1967, Auburn University at Montgomery (AUM) is the metropolitan campus of Auburn University, a land-grant institution. Located in the state capital of Montgomery, AUM serves a diverse student body of approximately 5,400 students and faculty/staff of 575 in five academic schools: Business, Education, Liberal Arts, Nursing, and Sciences. Montgomery supports cultural attractions including the Alabama Shakespeare Festival, Montgomery Museum of Fine Arts, and the Rosa Parks Library and Museum, among others.

Responsibilities/Qualifications: Terminal degree in Geography required at time of appointment. Successful candidate must have strong commitment to undergraduate and graduate education and teaching experience in core geography courses including Regional and Cultural Geography. Candidates must exhibit potential for teaching excellence and promising research agenda. Geographic Information Systems skills highly desirable; credentials to teach Anthropology a plus. Areas of scholarly interest are open. Successful applicants should demonstrate skill with web-based and other distance education technologies.

Apply: In addition to an online application submitted to [www.jobs.aum.edu](http://www.jobs.aum.edu), completed applications include application letter, current CV, statement of teaching philosophy, all academic transcripts, and three current reference letters sent to: Dr. Kim Brackett, Head Department of Sociology, Auburn University Montgomery, PO Box 244023, Montgomery, AL 36124-4023. Materials may be sent electronically to: [jhall28@aum.edu](mailto:jhall28@aum.edu).

Note: Salary commensurate with experience and qualifications. Review of applications begins December 1, 2010 and continues until position is filled.

Auburn Montgomery seeks diversity in its administration, faculty, staff, and student popu-

lations. Women and minorities are encouraged to apply.

DEC 10-289

### ARIZONA, TEMPE.

Arizona State University. School of Geographical Sciences & Urban Planning. The School of Geographical Sciences and Urban Planning at Arizona State University is searching for candidates to fill **four faculty positions** beginning Fall 2011: **1. Job #9622: Assistant Professor** with a focus in one or more of the following: urban and regional economic analysis, housing, land and real estate markets, public finance and local economic development strategies; **2. Job #9623: Assistant or Associate Professor** with a focus in GIS/Spatial Analysis; **3. Job #9624: Assistant Professor** with a focus one or more of the following areas: urban sustainability, housing policy, smart growth, transportation planning, and urban design; **4. Job #9625: Associate or Full Professor** with a focus in **urban design**.

Review of applications will begin December 1, 2010. Position will remain open until filled. Arizona State University is an equal opportunity/affirmative action employer committed to excellence through diversity. Women and minorities are especially encouraged to apply. A background check is required for employment.

Apply: For complete qualification/application information, see [http://geoplan.asu.edu/faculty\\_positions](http://geoplan.asu.edu/faculty_positions).

DEC 10-278

### ARIZONA, TUCSON.

**PhD Research Assistantships in Integrated Natural, Social, and Economic Sciences of Arid Lands.** The Arid Lands Resource Sciences Graduate Interdisciplinary PhD Program at the University of Arizona is seeking highly motivated individuals possessing a Masters degree to apply for admission and opportunities for **two first-year graduate assistantships**.

"Jobs in Geography" lists positions available with US institutions who are Equal Opportunity Employers seeking applications from men and women from all racial, religious, and national origin groups, and occasional positions with foreign institutions.

Rates: Minimum charge of \$150. Listings will be charged at \$1.25 per word. Announcements run for two consecutive issues unless a stated deadline permits only one listing. The charge for running an announcement more than twice is one-third the original charge for each subsequent listing. We will bill institutions listing jobs after their announcements appear in JIG for the first time.

Deadline: JIG announcements must reach the AAG *before the first of the month* to appear in JIG for the following month (eg: 1 January for February issue). Readers will receive their Newsletter copies between the 5th and the 15th of the month. Schedule job closing dates with these delivery dates in mind.

Format: Announcements should be sent as an attachment or in the body of an e-mail to [jig@aag.org](mailto:jig@aag.org). The announcements must be saved in Microsoft Word 5.0 or greater, or Corel WordPerfect 6 or greater. No job announcements accepted by phone. Follow format and sequence of current JIG listings. All positions are full-time and permanent unless otherwise indicated. State explicitly if positions are not firm. Employers are responsible for the accuracy and completeness of their listings. JIG will not publish listings that are misleading or inconsistent with Association policy. Employers should notify the Editor to cancel a listing if the position is filled. The Editor reserves the right to edit announcements to conform with established format. All ads must be in English.

Display ads are also available. Ads will be charged according to size: 1/6 page (2 1/4" x 5") \$335; 1/3 page vertical (2 1/4" x 10") \$475; 1/3 page square (4 3/4" x 4 3/4") \$475; 1/2 page horizontal (7" x 5") \$625; 2/3 page vertical (4 3/4" x 10") \$750; Full page (7" x 10") \$900. Display ads run for one month only.

Affirmative Action Notice: The AAG Affirmative Action Committee requires job listers to send to the JIG Editor the name, academic degree, sex, and rank of each person appointed as a result of an announcement in JIG.

Geographer Available. A service for AAG members only. Send personal listings of 50 words or less, following the format of current listings. Listings run for two consecutive issues. Enclose \$25 with listing. A blind listing service is available - the editor will assign a box number and forward inquiries to the member listed.

\* Indicates a new listing



ALRS is a unique interdisciplinary doctoral program designed to address the complex problems associated with sustainability of arid lands through integration of the physical, social, and economic sciences. There is a great breadth of opportunity for each student to pursue their unique research interests through development of an individually tailored and rigorous interdisciplinary curriculum that will enable them to pursue their professional goals. We welcome students proceeding directly through graduate work as well as non-traditional students who bring knowledge of real-world applications to their graduate studies. The first-year graduate assistantship is designed to allow the student to interact with faculty having common research interests so that they can establish working relationships enabling them to create the foundation for securing research assistantships in subsequent years. The graduate assistantships are at 0.5 FTE and include an out-of-state tuition waiver, registration remission and student health insurance.

Applications are being sought for the 2011/2012 academic year. For more information please visit our website at <http://www.alrsgidp.arizona.edu> or contact Dr. Stuart Marsh ([smarsh@email.arizona.edu](mailto:smarsh@email.arizona.edu); 520-621-8574). ALRS is also a member of the WICHE Western Regional Graduate Program.

DEC 10-285

#### CALIFORNIA, FRESNO.

The California State University at Fresno invites applications for a tenure track appointment at the **Assistant Professor** level in **Urban and Regional Planning** beginning in August 2011. The preferred candidate will be professionally trained in urban and regional planning with a specialization in one or more of the following areas—physical, land use, transportation, environmental, community, and economic.

The preferred candidate shall have extensive expertise in working with or for local governments on urban and regional planning projects. Candidates are expected to demonstrate a commitment to and potential for teaching excellence and scholarly activity at the university level. The successful candidate is expected to develop courses for the urban planning curriculum of the department, and will teach other lower and upper division courses in the departments of Geography and Political Science including People and Places,

American West, and American Government. The successful candidate will be part of a cohort of faculty who will work as a team to develop research, strategies, and practices that support the urban and regional transformation of the San Joaquin Valley. The team will work on projects that address the social, economic, infrastructure, industrial and agricultural needs of the region. The successful candidate must have the ability to work effectively with faculty, staff, and students from diverse ethnic, cultural, and socioeconomic backgrounds.

The standard teaching load of the university is 12 WTUs per semester. An earned doctorate (PhD) in Urban Planning, Geography, Political Science, or a related field is required for appointment to a tenure track position.

Apply: (1) Submit applications online at <http://jobs.csufresno.edu/> with cover letter, vitae, teaching philosophy, and unofficial transcript as attachments; and (2) Have three referees to directly *mail* their original letters of reference to: Dr. C. K. Leung, Search Committee Chair, Department of Geography, California State University—Fresno, 2555 E. San Ramon Ave., M/S SB69, Fresno, CA 93740-8034. Phone: (559) 278-2797; Fax: (559) 278-7268.

Completed applications received by January 15, 2011 will receive full consideration. Position will remain open until filled.

The California State University is an Equal Opportunity/Affirmative Action employer.

DEC 10-287

#### \*CALIFORNIA, LOS ANGELES.

University of California, Los Angeles, Department of Geography. **Alexander Von Humboldt Chair in Geography**. The Department seeks an outstanding and distinguished researcher with a strong commitment to graduate education. Appointment will be at the **rank of Professor**. Established in 1997, the Humboldt Chair is endowed by a generous gift from the Henry J. Bruman Foundation. The endowment for the Chair provides funds that may be used for summer salary, research expenses, and/or graduate student support.

We seek candidates who are committed to the highest standards of scholarship and professional activities, and to the development of a campus climate that supports equality and diversity. The University of California is an affirmative action/equal opportunity employer.

Inquiries should be sent to Michael Curry, Chair, Alexander von Humboldt Chair Search

Committee, Department of Geography, UCLA. E-mail: [Humboldt@geog.ucla.edu](mailto:Humboldt@geog.ucla.edu).

Apply: Applications are to be submitted online, at <http://recruitment.sscnet.ucla.edu/geography/humboldtchair>.

Consideration of applications will commence on January 15, 2011, and will continue until the position is filled.

JAN 11-01

#### CALIFORNIA, LOS ANGELES.

The Department of Geography and Urban Analysis at California State University, Los Angeles invites applicants for a tenure-track position at the **Assistant Professor** level starting September 2011. We are seeking candidates with broad training in **Urban Geography** who will be able to expand our course offerings in the urban environment. Expertise in one or more of the following areas will be highly desired and befitting our strategic growth over the next five years: transportation, climate change and urban form, and sustainable urban development. Candidates with an interest in teaching research methods courses, particularly application of GIS in transportation or environmental planning, will be given preference. Candidates with an interest in community-based research and the willingness to work within a multidisciplinary academic environment are highly desirable.

A PhD in Geography or a closely related discipline from an accredited institution of higher education is required by the start date. Candidates should provide record of or potential for scholarly activity, as well as the demonstrated potential for effective teaching using a variety of methodologies. Candidates should also demonstrate the ability for or interest in teaching at a multicultural, multiethnic campus. In addition to teaching 3 courses per quarter, duties include student advisement/mentoring and committee service for the Department, College of Natural and Social Sciences, and the University. Review of Application will begin on November 22, 2010 and will continue until the position is filled.

Apply: For further information regarding the application process and requirements, please see: [http://www.calstatela.edu/academic/position/Templates/10\\_5\\_10\\_Geo.dwt.php](http://www.calstatela.edu/academic/position/Templates/10_5_10_Geo.dwt.php).

DEC 10-251

#### CALIFORNIA, LOS ANGELES.

University of California Los Angeles. The Department of Geography invites applications

for a full-time tenure-track position at the **Assistant Professor** level in **Population Geography**. We seek an outstanding scholar with demonstrated research expertise in one or more of the following areas: immigration, mobility, race, labor, inequality, and spatial demography. Applicants with a strong background in quantitative methods, including spatial statistics and GIS, are especially encouraged to apply. UCLA hosts a strong cluster of demographers affiliated with the UCLA California Center for Population Research ([www.ccp.r.ucla.edu](http://www.ccp.r.ucla.edu)) and the California Census Research Data Center ([www.ccrdc.ucla.edu](http://www.ccrdc.ucla.edu)).

The appointment will begin July, 2011. A PhD in **Geography** or **closely related field** is required by the time of appointment. Apply: Applicants should submit (1) a letter of application stating their qualifications for this position, (2) a curriculum vitae, (3) a statement of research and teaching interests, and (4) the names and contact information of three referees. Please submit application materials electronically to the Search Committee Chair at <http://recruitment.sscnet.ucla.edu/geography/popgeogposition>. Reviews of submitted applications will commence January 1, 2011, continuing until the position is filled. Please note that the on-line application website may close without notice at any time after January 15, 2011.

UCLA is an affirmative action/equal opportunity employer and has a strong commitment to the achievement of excellence and diversity among its faculty and staff.

DEC 10-294

#### CALIFORNIA, REDLANDS.

**Higher Education Industry Solutions Manager.** Be an advocate for GIS in education by developing and implementing marketing campaigns to colleges and universities worldwide. This is a great opportunity to utilize your relationship-building skills and experience in higher education to help define the future of Esri's Higher Education Program.

Responsibilities include working with educators to help create effective local programs that develop skills, competencies, and performance criteria standards; supporting current educational users and soliciting new sales opportunities of individual software products to campus, system, or statewide site licenses; and working with professional and academic organizations to build programs and resources

which support educators by promoting GIS-related curriculum development. Successful candidates will possess a master's degree in education, sciences, GIS, or related fields, preferably with some marketing experience and academic work experience; practical experience in instruction or administration in higher education; and knowledge of GIS and its practical applications in education, research, and administrative use in higher education. This position is based at our headquarters in Redlands and requires domestic and international travel.

Apply: Learn more about this position and apply online at [www.esri.com/careers](http://www.esri.com/careers).

Esri is an Equal Opportunity Employer.

DEC 10-297

#### \*CALIFORNIA, SANTA BARBARA.

University of California, Santa Barbara, Department of Geography invites applications for a tenure-track faculty position at **Associate or Assistant** rank in the general area of the **Geography of the Information Society**. This position will complement departmental strengths in both the Human Geography and Spatial Techniques areas. Information and communication technologies are increasingly relevant to a broad class of geographic phenomena and processes defined over a wide range of spatial scales, and play an important role in diverse areas of geographic inquiry such as urban and regional change; land use change; globalization; transportation and utilities networks; socio-spatial networks; the restructuring of individual and group activities and mobilities; location-based services and mobile GIS; emergency response and mitigation services; and geospatial cyberinfrastructure. The successful candidate will exhibit clear potential for a robust extramurally funded research program in one or more of these areas, and must be able to teach GIS and related topics at both the introductory and the advanced levels. A Ph.D. is required by the date of appointment. The university provides excellent opportunities for interdisciplinary collaborations, with our new Center for Spatial Studies taking a central role in coordinating cross-campus outreach and the Center for Information Technology and Society providing resources in the general area of the position. The department is especially interested in candidates who can contribute to the diversity and excellence of the academic community through

research, teaching, and service. Position will remain open until filled, the review of applications will begin January 1, 2011; the starting date is July 1, 2011. Qualified applicants should send their complete curriculum vitae, statement of research and teaching interests, and names of three referees with addresses preferably by email to [recruit@geog.ucsb.edu](mailto:recruit@geog.ucsb.edu) or by mail to Search Committee, Department of Geography, University of California, Santa Barbara, CA 93106-4060. To learn more about the department, visit our website at [www.geog.ucsb.edu](http://www.geog.ucsb.edu). An EO/AA Employer.

JAN 11-03

#### DELAWARE, NEWARK.

University of Delaware. The Department of Geography in the College of Earth, Ocean, and Environment invites applications for a tenure track **Assistant Professor** position beginning September 2011. The department seeks an outstanding **Human Geographer** with research expertise in the broad area of human-environment interactions. The successful candidate should be able to contribute to an expanding interdisciplinary research focus on water and society. We welcome applicants versed in a variety of technical and methodological approaches who are prepared to collaborate with the diverse geographers and environmental scientists within the department and college.

The Geography Department at the University of Delaware is a nationally and internationally recognized department that has a long-standing tradition in climatological research. The Department now seeks to broaden its focus by strengthening its scholarship in the human geography area of human-environment interactions. This is consistent with the University's "Initiative for the Planet" to achieve prominence in environmental research and education by leading the way in developing technological, social, political, and cultural solutions to environmental challenges. To attain this goal, the University of Delaware is in the process of hiring 6-8 outstanding faculty at all academic ranks in environmental science, engineering, and policy. In addition, a separate search is ongoing for scholars in the environmental humanities. The Geography Department search for a Human Geographer is separate from these hires, and qualified candidates are encouraged to apply to the other two searches if applicable.

The department offers undergraduate degrees in Geography, Environmental Science and Environmental Studies, Master degrees in Geography, PhD degrees in Geography and Climatology, and a graduate-level certificate program in Geographic Information Science. Our research and teaching programs interact extensively with other units in the college and university, and we emphasize interdisciplinary research collaborations.

The successful candidate will be expected to maintain a strong program of undergraduate and graduate instruction, develop an independent research program with a high level of scholarly output, garner external research support, and provide service to the department, college, university, and profession. We are seeking a future leader in human geography who will complement and enhance our current degree programs, and whose record demonstrates a potential for publication and extramural funding as well as a commitment to excellence in teaching. A PhD in Geography or a closely related discipline is required at the time of appointment.

To be considered for this position, applicants must provide a letter of application addressing their qualifications for the position, a curriculum vitae, statement of research and teaching interests, and contact information for three references.

Apply: All materials should be sent to [job@geog.udel.edu](mailto:job@geog.udel.edu).

Questions regarding this position may be addressed to the committee chair, Dr. Yda Schreuder, Department of Geography, University of Delaware, Newark, Delaware 19716, USA. Review of applications will begin on January 3, 2011, and will continue until the position is filled. Further information about our department and programs may be found at <http://www.udel.edu/Geography>.

The University of Delaware is located midway between Philadelphia and Baltimore, and is a Sea Grant, Space Grant, and Land Grant institution and a member of the UCGIS. The University of Delaware is an Equal Opportunity Employer and encourages applications from minority group members and women.

DEC 10-290

**\*DELAWARE, NEWARK.**

University of Delaware. One of the oldest institutions of higher education in this country, the University of Delaware today combines

tradition and innovation, offering students a rich heritage along with the latest in instructional and research technology. The University of Delaware is a Land-Grant, Sea-Grant, and Space-Grant institution with its main campus in Newark, DE, located halfway between Washington, DC and New York City. Please visit our website at [www.udel.edu](http://www.udel.edu).

As part of its Path to Prominence Strategic Plan, the University of Delaware has launched its Initiative for the Planet. The goals of this initiative are to promote sustainable practices and to support multidisciplinary efforts in research and education needed to develop solutions to significant, time-critical issues in energy, the environment, and resource sustainability. Our overarching objective is to make the University of Delaware a national and international resource for environmental research, technology, education, and policy—today and into the future. To attain this goal, we seek **6-8 outstanding faculty at all academic ranks in environmental science, engineering, and policy**. Faculty can have appointments in multiple departments and colleges.

To complement these hires we are conducting a search for the **Howard E. Cosgrove Chair in Environment**. This internationally renowned scholar will further enhance the prominence of the University's environmental interdepartmental teaching and research programs, and assist in building the Delaware Environmental Institute (DENIN) to a position of national and international prominence.

The University of Delaware provides an outstanding environmental research base through existing strengths in a number of areas including biogeochemistry, soil and environmental chemistry, environmental engineering, environmental microbiology, environmental genomics and bioinformatics, geomicrobiology, land/coastal dynamics, land use, nutrient management, environmental modeling, hydrology, environmental forecasting and restoration, ecosystem health and sustainability, and environmental policy, economics and education. These activities are carried out across the University's seven colleges and in a number of well-regarded institutes and research centers. More details on our environmental programs can be found at [www.environmentalportal.udel.edu/](http://www.environmentalportal.udel.edu/).

The desire to better utilize the strengths in the colleges, institutes, and centers, and

to foster collaboration and enhance competitiveness in attracting outstanding faculty and students, led to the creation of the Delaware Environmental Institute in 2009. DENIN's goals are to initiate interdisciplinary research projects, support interdisciplinary academic programs, and forge partnerships among government agencies, nonprofits, industry, policymakers, and the public to address environmental challenges and coordinate and sponsor University-based interdisciplinary initiatives. More details on DENIN can be found at [www.udel.edu/denin](http://www.udel.edu/denin).

Other recent actions which reflect the University's commitment to the environment and sustainability include an aggressive Climate Action Plan and the creation of new undergraduate majors in Environmental Studies and Energy and Environmental Policy. Successful candidates will have the opportunity to help shape and grow these new majors.

Candidates for the faculty positions are expected to hold a PhD or equivalent degree in their area of expertise and have a demonstrated record of excellence in environmental scholarship commensurate with appointment to a faculty position in one or more departments of the University.

Apply: Nominations and applications should be submitted electronically to Environmental Cluster Search Committee Chair at [environmental-hire@udel.edu](mailto:environmental-hire@udel.edu).

Application materials should include a statement of interest, curriculum vitae, description of research and teaching interests and accomplishments, and the names and contact information of at least four references. Review of applications will begin on December 15, 2010 and will continue until the positions are filled.

The University of Delaware is an Equal Opportunity Employer which encourages applications from Minority Group Members and Women.

JAN 11-05

**\*DISTRICT OF COLUMBIA, WASHINGTON.**

Division of Behavioral and Social Sciences and Education, **Executive Director**.

The **National Research Council** is actively seeking an Executive Director for the Division of Behavioral and Social Sciences and Education. This is a rare and challenging opportunity for an executive professional with experience



drawn from a broad range of related disciplines in the social and behavioral sciences.

The Executive Director is responsible for the intellectual, strategic, managerial, and financial leadership of the Division of Behavioral and Social Sciences and Education (DBASSE) of the National Research Council (the operating arm of the National Academy of Sciences, the National Academy of Engineering, and the Institute of Medicine). DBASSE is one of five divisions of the National Research Council.

The Executive Director establishes current and long-range objectives for the division. Works with a division advisory committee for strategic planning. Manages all aspects of the division's portfolio and staff. Works with individuals and organizations to secure financial support for the division's programs and projects. With the other four divisions, supports the institution's leadership in management and policy making. Reports to the Executive Officer of the National Research Council.

The successful candidate will possess a PhD in a related field or equivalent knowledge. At least six years of scholarship, research, and professional experience in a related field, at least three of which are in an executive, program development, and direction capacity.

For more information about this challenging career opportunity and to apply, please visit our website at <http://national-academies.org>. Under Employment, search our Current Opportunities by department—Div of Behavioral & Social Sciences & Education—requisition number 100275-1.

JAN 11-026

#### DISTRICT OF COLUMBIA, WASHINGTON.

National Geographic Society. **Manager, Alliance Programs**, will be responsible for oversight and coordination of the nationwide National Geographic Network of Geography Education Alliances. The Geography Alliance Network consists of university-based centers for professional development and reform in all 50 states. Major responsibilities include the formulation of strategy for and management of grant making to Alliances, totaling more than \$3M/year; coordination of Alliance support and technical assistance; coordination of evaluation across the Alliance network; management and oversight of staff and independent consultants, fund-raising, donor relations, and other external relations. Other tasks as assigned. This individual will also be responsible for the

tracking and continued updating of knowledge pertaining to national and state educational systems and policies.

Apply: to be considered for this position all applicants must apply online to [www.national-geographic.com](http://www.national-geographic.com). We are an Equal Opportunity Employer.

DEC 10-300

#### DISTRICT OF COLUMBIA.

**Director of GIScience Research Programs.** The Association of American Geographers has a position available for immediate placement at its office in Washington, D.C. for a Geographer or GIScientist whose primary responsibility will be leading the AAG's programs in GIScience research and education. The successful applicant will have advanced, proven expertise in GIScience and technology, and possess strong research and analytical skills. The Director of GIScience Research Programs will also assist in the development of grant proposals and journal articles, and interact constructively with federal agencies and other GIScience organizations. This is an excellent opportunity for talented individuals to participate at a high level in AAG research and education initiatives. A qualified candidate will have a graduate degree in geography or GIScience; possess outstanding written, research, and verbal communication skills; be highly organized and experienced with project management; and have strong interpersonal skills. Salary is commensurate with experience.

Apply: Please send a letter of application, CV, and three writing samples to: Megan Overbey, Association of American Geographers, 1710 Sixteenth Street NW, Washington, D.C. 20009; or by e-mail to: [moverbey@aag.org](mailto:moverbey@aag.org).

AAG 10-128

#### \*FLORIDA, MIAMI.

The University of Miami Department of Geography and Regional Studies (GRS) is looking for an innovative and talented individual to assist in teaching and curricular development for a new Certificate Program in **Geospatial Technology**. This is a full-time, nine-month **Lecturer** position renewable on an annual basis starting August 15, 2011. Duties will include teaching courses in geospatial technology, including Introductory and Intermediate GIS, Web GIS and GIS programming applications. In addition, courses may be taught in the candidate's area of specialization outside geospa-

tial technology. The position may include the possibility of summer teaching, the teaching of short courses, and work related to sponsored projects for additional remuneration.

The successful candidate will also assist in the planning and development of curriculum, scheduling and promotion for the new Certificate Program, and will be a team player who can work well in a collaborative environment. The Department has a full-time GIS Lab Manager.

**Qualifications:** A master's degree or higher in Geography or a related discipline with an excellent working knowledge of ArcGIS and at least one other geospatial software package; working knowledge of LAN and server-client architecture for GIS; and knowledge of XML, JAVA, ArcIMS or other web-based applications will be considered a plus. Familiarity with remote sensing and image-processing software such as ERDAS IMAGINE is expected, with the ability to become expert in their use. Prior teaching experience in a university environment is preferred.

**Salary/Benefits:** Competitive, based on experience. UM offers a complete benefits package to all faculty.

Apply: Applications should be addressed to: Professor Ira Sheskin, Chair, Geospatial Lecturer Search Committee, Geography and Regional Studies, University of Miami, Coral Gables, FL 33124-2221 and must include a cover letter, Curriculum Vitae, and names/e-mail addresses of three references. These may be sent via e-mail to: Professor Ira Sheskin ([isheskin@miami.edu](mailto:isheskin@miami.edu)).

**Further Information:** Information on the Department and the Certificate Program in Geospatial Technology can be found on <http://www.as.miami.edu/geography/>.

The University of Miami is an Affirmative Action/Equal Opportunity University that values diversity and has progressive work-life policies. Women, persons with disabilities, and members of other under-represented groups are encouraged to apply.

JAN 11-08

#### FLORIDA, MIAMI.

FIU is a multi-campus public research university located in Miami. FIU offers more than 180 baccalaureate, masters, professional, and doctoral degree programs to over 42,000 students. As one of South Florida's anchor institutions, FIU is worlds ahead in its local and global engagement and is committed to finding

solutions to the most challenging problems of our times.

The Asian Studies Program at Florida International University (FIU) invites applications for a tenure-track position at the **Assistant Professor** level in **Modern East Asia** to have a tenure home in one of the social science departments, including Global and Sociocultural Studies (anthropology, geography, sociology), History, or Politics and International Relations. The start date will be August 17, 2011. Applicants should have a PhD in relevant field or expect to have it in hand by that date. The Asian Studies Program at FIU is housed in the new School of International and Public Affairs and offers BA and MA degrees, and all of the tenure-home departments offer the PhD. Applicants with a specialized research focus in the region and an interest in cross-cultural or interdisciplinary areas of scholarship are encouraged.

Apply: Applications must be made online at <https://www.fiujobs.org>. Look for Assistant Professor: East Asian Studies. Attach cover letter, curriculum vitae, and one or more writing samples. Three letters of recommendation and additional supporting materials such as graduate transcripts, sample syllabi, and teaching evaluations should be sent to arrive by the deadline of January 15, 2011 to: Chair-East Asian Studies Search, Asian Studies Program, DM 300, Florida International University, Miami, FL 33199. Inquiries can be made to Professor Steven Heine at [heines@fiu.edu](mailto:heines@fiu.edu) or 305-348-1914.

FIU is a member of the State University System of Florida and is an Equal Opportunity, Equal Access Affirmative Action Employer.

DEC 10-282

#### FLORIDA, WINTER PARK.

**Post-Doctoral Fellow, Environmental Issues in Latin America.** Rollins College, Winter Park, Florida. The Department of Environmental Studies at Rollins College invites applications for a **two-year postdoctoral fellow** beginning August 2011. For the purposes of this fellowship, postdoctoral candidates will be defined as scholars who have earned a doctorate in an area related to environmental studies within the last five (5) years. Successful candidates will demonstrate an interest in learning about the rewards and challenges of a career at a liberal arts institution. The successful applicant will be an interdisciplinary teacher/scholar who will integrate Latin American studies into

the environmental studies curriculum, while pursuing a significant research agenda in the field of environmental issues in Latin America. Teaching load is one course each semester. Candidates who are members of Phi Beta Kappa are encouraged to apply.

A faculty mentor will assist the fellow in making the transition to academic life at a small, liberal arts college. The mentor will also assist in advancing the fellows' research interests through contacts with regional environmental organizations. The two-year experience is expected to prepare the fellow for a position at a liberal arts college. This position is funded by a grant to the Associated Colleges of the South (ACS) from the Andrew W. Mellon Foundation.

To apply, applicants must use the on-line system at <https://www.rollinsjobs.com>. Candidates will be asked to fill out a short questionnaire and upload their application documents. Applicant materials must include cover letter, statement of teaching philosophy, graduate transcripts, list of references with phone and e-mail contact information, and CV. Questions may be addressed to Dr. Barry Allen, Chair, Postdoctoral Fellow Search, at [ballen@rollins.edu](mailto:ballen@rollins.edu). Review of applications will begin January 15, 2010, and will continue until the position is filled.

Founded in 1885, Rollins is an independent, comprehensive, residential liberal arts college with a total undergraduate enrollment of 1,730 and a student-to-faculty ratio of 10:1. Ninety-one percent of Rollins' 171 full-time faculty hold a PhD or the highest degree in their field. The campus, noted for its lakefront beauty and for its unique location, is set in the residential community of Winter Park, just 15 minutes from one of the nation's most dynamic urban centers, Orlando. Rollins is Florida's oldest recognized college. For the sixth consecutive year, Rollins ranked number one among southern regional universities in U.S. News & World Report's "America's Best Colleges." Rollins faculty are committed to a rigorous, applied liberal arts education and student-centered learning. For additional information, please visit the College website at [www.rollins.edu](http://www.rollins.edu) and the Department of Environmental Studies website at <http://tars.rollins.edu/envstudies/>.

Through its mission, Rollins College is committed to creating a fully inclusive, just community that embraces multiculturalism, persons of color and other historically underrepresented groups are therefore encouraged

to apply. The College's equal opportunity policy is inclusive of sexual orientation, gender identity and expression, and Rollins offers domestic partner benefits.

DEC 10-250

#### \*GEORGIA, ATLANTA.

**Geoscience Education**, Georgia State University. The Department of Geosciences anticipates hiring for a tenure-track faculty member at the **Assistant Professor** level pending budgetary approval, whose professional development is in the area of geoscience education. The area of research in geoscience education is open.

We seek a colleague who will develop a vigorous research program in an area of geoscience education resulting in publications and extramural support and will develop a strong record of instruction at the graduate and the undergraduate level. Some preference will be given to candidates with post-doctoral research in geoscience education and whose research complements ongoing departmental research and instruction activities. Ph.D. degree in relevant discipline is required. Further information about Geosciences can be read at: [www.cas.gsu.edu/geosciences/index.html](http://www.cas.gsu.edu/geosciences/index.html).

Apply: to ensure full consideration, applicants need to send by January 15, 2011 an application stating their geoscience education research and instructional interests and goals, CV, and the names of at least three references to: Dr. Daniel M. Deocampo ([deocampo@gsu.edu](mailto:deocampo@gsu.edu)), Chair, Geoscience Education Search Committee, Department of Geosciences, Georgia State University, Atlanta, GA 30302-4105.

The position will start in FA 2011. This position is open until filled. An offer of employment will be conditional upon background verification.

Georgia State University is a Research University of the University System of Georgia and is an EEO/AA employer.

DEC 10-295

#### GEORGIA, ATLANTA.

The Department of Geosciences anticipates hiring non-tenure track **Full-Time Lecturer** pending budgetary approval to teach Introductory courses in **Geosciences** (Weather and Climate, Introduction to Landforms, Introductory Geology I and Introductory Geology II). Preference is given to those candidates with

appropriate teaching experience and scholarly preparation. A PhD degree is required by August 2011.

Apply: Send Application letter, CV, copies graduate transcripts, and a brief description of instructional interests to: Dr. Crawford Elliott, Department of Geosciences, Georgia State University, P.O. Box 4105, Atlanta, GA 30302-4105.

Review of applications will begin immediately and continue until the positions are filled. An offer of employment will be conditional upon background verification.

Georgia State University is a Research University of the University System of Georgia and is an EEO/AA employer.

DEC 10-296

#### ILLINOIS, URBANA.

The Department of Natural Resources and Environmental Sciences at the University of Illinois at Urbana-Champaign seeks a full-time tenure-track **Assistant Professor in human dimensions of natural resources**, expected to begin August 16, 2011. Please visit <http://jobs.illinois.edu> to view the complete position announcement and application instructions. For full consideration all requested application information must be received by December 15, 2010.

Illinois is an AA-EOE.

DEC 10-271

#### KANSAS, LAWRENCE.

University of Kansas, Department of Geography. **Assistant Professor of Central Asia Cultural Geography**. Tenure-track faculty position expected to begin as early as August 18, 2011. The successful candidate is expected to teach and advise in the undergraduate and graduate programs in geography, with two courses per year focused in the Russian/Eurasian region and at least one in cultural geography. The successful candidate will be expected to conduct research, pursue grant opportunities, and publish in refereed journals and/or presses for geography and Russian, East European and Eurasian Studies.

Required Qualifications: PhD or ABD in Geography expected by start date of appointment; previous college teaching experience in a related field at the undergraduate or graduate level; an ongoing active research program, as evidenced by some combination of publications, grant activity, map publications, and conference presentations in cultural geography,

Central Asian studies and/or Siberian studies; evidence of commitment to University and professional service in geography and Russian and Eurasian Studies; working knowledge of the Russian language; and familiarity with contemporary cultural geography in theory and practice.

Preferred Qualifications: A record of excellence in teaching at both the graduate and undergraduate levels; interest in or readiness to teach in Siberian Studies and/or Central Asian studies; competence in a Turkic language or Tajik; a record of refereed publications; a candidate who will contribute to the climate of diversity in the College, including a diversity of scholarly approaches.

Apply: For additional information and to apply online, go to <https://jobs.ku.edu> and search for position 00068378. Upload letter of application, c.v., and a list of 3 references. In addition, applicants must arrange to have three letters of recommendation that evaluate scholarly potential/achievement and teaching sent to: Professor Myers ([gmyers@ku.edu](mailto:gmyers@ku.edu)), Committee Chair, The University of Kansas, Department of Geography, 1475 Jayhawk Blvd, Room 213 Lindley Hall, Lawrence KS 66045-7594.

Review of completed applications will begin December 1, 2010, and continues as long as needed to identify a qualified pool. The successful candidate for the position must be eligible to work in the U.S. prior to the start of the appointment.

EO/AA Employer.

DEC 10-270

#### \*KENTUCKY, BOWLING GREEN.

Western Kentucky University, Department of Geography and Geology, is seeking applicants for an **Assistant Professor of Geography**. This is a tenure-track assistant professor position beginning August 2011. The successful candidate is expected to contribute to research and education programs of the University's Hoffman Environmental Research Institute, which may include affiliation with major Institute programs including the China Environmental Health Project, Crawford Hydrology Laboratory and Center for Cave and Karst Studies.

Qualifications: Earned PhD in Geography or a related environmental field is required. Must demonstrate a commitment to excellence in teaching and research at the undergraduate, Master's, and post-doctoral levels. Is expected

to develop a strong externally funded research program in one or more environmental areas related to the mission of the Institute, including but not limited to environmental education, water resources, and water policy. Research experience in karst aquifer/landscape systems and familiarity with GIS are desirable but not required. The Hoffman Institute's mission statement can be found at <http://hoffman.wku.edu/mission.html>. Collaborative and interdisciplinary research is highly desirable.

Apply: Candidates must submit a letter of application, curriculum vita, unofficial transcripts, the names of four references, and separate statements of 1) teaching and 2) research philosophy to: Search Committee, Department of Geography and Geology, Western Kentucky University, 1906 College Heights Blvd #31066, Bowling Green, KY 42101-1066. Review of applications will begin February 15, 2011. Position will remain open until filled.

JAN 10-018

#### KENTUCKY, RICHMOND.

**Assistant Professor of Geography in Remote Sensing.**

The Department of Geography & Geology at Eastern Kentucky University invites applications for a tenure-track faculty position in Geography at the Assistant Professor level, beginning August 15, 2011. We are seeking candidates with expertise in remote sensing and the applied use of remote sensing and GIS techniques. The new hire would be expected to teach courses in remote sensing and advanced remote sensing, to teach applied geotechniques courses based on her or his specialty, to participate in our general education program, share in service activities, and conduct research that could involve undergraduates.

Applicants must have a strong commitment to excellence in undergraduate teaching including willingness to participate in online teaching, mentoring student research, and to developing an active program of scholarship that encourages student involvement. Eastern Kentucky University is committed to the promotion of regional stewardship and student engagement. Candidates must have a PhD in Geography or a related discipline by the time of appointment.

To apply, candidates must submit a letter of interest, names and e-mail addresses of three professional contacts, curriculum vitae, statements of teaching and research interests, and unofficial transcripts via the ECU online



employment website (<https://jobs.eku.edu>). The requisition number for this position is 0608540. Review of applications will begin on January 3, 2011.

DEC 10-279

#### MARYLAND, COLLEGE PARK.

**Multiple Faculty Appointments in Energy/Security/Environmental Policy.** The UMD School of Public Policy is building a major program in climate policy integrating energy/security/environmental policy issues. The School expects to make **one senior (tenured) and one junior (tenure-track) appointment.** UMD is located inside the Washington Beltway, within thirty minutes of federal agencies, key international associations, and many non-profit and private policy-research organizations. Appointments anticipated beginning August 2011. Competitive salary. Position open until filled, but application review begins 11/1/2010. View the full announcement and application instructions at [www.publicpolicy.umd.edu/employment](http://www.publicpolicy.umd.edu/employment).

As an AA/EOE, the School particularly encourages and welcomes applications from women, minority candidates, and persons with disabilities.

DEC 10-258

#### \*MASSACHUSETTS, AMHERST.

**Extension Assistant Professor—Water and Climate Change.** The Department of Geosciences at the University of Massachusetts Amherst and UMass Extension invite applications for a full-time, academic year (9-month) non tenure-track Extension Assistant Professor position to conduct research, outreach, and education concerning Massachusetts water resources and regional climate change, starting Sept. 1, 2011. A PhD in **Geosciences or related fields** is required at the time of appointment. The position will involve a mix of teaching, applied research, and extension. The position will be part of UMass Extension's Natural Resources and Environmental Conservation (NREC) program, but the appointment will be in the Department of Geosciences, which houses the Climate System Research Center and the Massachusetts Geological Survey. The new hire is expected to develop an externally funded research program, and to participate in collaborative programming with other Extension and Geosciences faculty and professional staff, Extension programs in other states, and occasionally serve on Extension or Geosciences committees.

There are opportunities to collaborate with faculty in allied departments and programs such as Environmental Conservation, Civil and Environmental Engineering, Plant, Soil and Insect Sciences, and the Water Resources Research Center. Potential areas of research expertise may include field-based fluvial or coastal geomorphology, surface water hydrology, or ecohydrology. The preferred candidate will also have experience or working knowledge of community issues and environmental policy and regulations. Teaching will include two course-equivalents a year, including an introductory course in spatial data analysis.

Apply: Applicants should supply a cover letter, CV, research statement, teaching statement, and contact information for three referees familiar with their research and teaching to: [search@geo.umass.edu](mailto:search@geo.umass.edu).

For more information, visit the Department of Geosciences ([www.geo.umass.edu](http://www.geo.umass.edu)) and Extension (<http://www.umassextension.org>) websites or contact the Search Committee Chair ([search@geo.umass.edu](mailto:search@geo.umass.edu)). Review of applicants will begin December 21, 2010 and continue until the ideal candidate is identified.

The Department of Geosciences is committed to increasing the diversity of the faculty, student body, and curriculum. The University of Massachusetts is an Affirmative Action / Equal Opportunity Employer; women and members of minority groups are encouraged to apply.

JAN 11-09-1

#### \*MASSACHUSETTS, CAMBRIDGE.

Massachusetts Institute of Technology, School of Architecture and Planning, Department of Urban Studies and Planning. **Lecturer in Energy Planning.** Position: Full-time non-tenure track position as Lecturer for the period September 1, 2011 through May 31, 2012, with potential for renewal for up to two academic years, pending annual review.

The Department of Urban Studies and Planning (DUSP) at the Massachusetts Institute of Technology invites applications for a full-time non-tenure track Lecturer in the area of Energy Policy and Planning. We seek a colleague with particular expertise in demand-side management, energy strategy development, renewable energy, innovations in alternative-energy and energy-efficiency policy, or the mitigation of greenhouse gas emissions in urban contexts. We are equally interested in

applicants with knowledge of these issues in domestic and international settings.

The Department of Urban Studies and Planning is located within the School of Architecture and Planning. The department is home to a diverse student body that spans doctoral, masters, and undergraduate levels and offers an environmental policy and planning specialization.

The successful candidate will have completed a PhD no later than June 2011 in urban planning or a related discipline. The position requires teaching three classes per year, participating in department committees, and serving as an academic and thesis advisor to students enrolled in the Master of City Planning program.

Applicants should submit the following: 1) cover letter summarizing scholarly expertise and courses you are prepared to teach; 2) curriculum vita; 3) two publications or papers; and 4) three letters of recommendation. Doctoral candidates should submit two completed dissertation chapters in lieu of other publications or papers and provide a detailed description of dissertation findings and progress in the cover letter. Full consideration will be given to completed applications received by January 20, 2011.

Apply: All materials and letters of recommendation, as well as inquiries about the position, should be sent to: [dusp-energyse-arch@mit.edu](mailto:dusp-energyse-arch@mit.edu).

MIT is building a culturally diverse faculty and strongly encourages applications from women and minority candidates. MIT is an Affirmative Action/Equal Opportunity Employer.

JAN 11-10

#### MASSACHUSETTS, CAMBRIDGE.

Environmental Fellows Program at Harvard University. The Harvard University Center for the Environment created the **Environmental Fellows** program to enable recent doctorate recipients to use and expand Harvard's extraordinary resources to tackle complex environmental problems. Environmental Fellows work for two years with Harvard faculty members in any school or department to create new knowledge while also strengthening connections across the University's academic disciplines. Fellows may include people with degrees in the sciences, social sciences, law, government, public policy, public health, medicine, design, and the full array of humanities.

Complete details can be found at: [www.environment.harvard.edu/grants/fellows](http://www.environment.harvard.edu/grants/fellows). Applications are due January 14, 2011 and Environmental Fellows will begin work in September 2011. Harvard University is an affirmative action, equal opportunity employer.

OCT 10-158

#### MASSACHUSETTS, SOUTH HADLEY.

Mount Holyoke College, Department of Geology and Geography, invites applicants for a three-year non-tenure track appointment in **human geography** at the rank of **assistant professor** starting fall 2011. Successful candidates will have a strong background in human geography with interests in economic development, globalization, urban and political geography. Responsibilities include teaching introductory human geography and advanced thematic and regional courses in the candidate's area of specialization and interest. Candidates are also expected to have a genuine interest in undergraduate teaching and student research.

The Mount Holyoke College GeoProcessing Laboratory, a state of the art teaching and research facility for remote sensing and GIS with full time professional staff, is available to support the selected candidate's teaching and research interests. The candidate must have completed a doctoral program in geography by the time of appointment. Review of applications will begin on January 15, 2011 and will continue until the position is filled.

Apply on-line only at <https://jobsearch.mtholyoke.edu>.

Applicants must submit a letter of application addressing their qualifications for the position described above along with a curriculum vitae, and the email addresses of three references who will be contacted directly.

Mount Holyoke is an undergraduate liberal arts college for women with 2,100 students and 210 faculty. Half the faculty are women; one fourth are persons of color. It is located about 80 miles west of Boston in the Connecticut River Valley and is a member of the Five College Consortium consisting of Amherst, Hampshire, Mount Holyoke, Smith Colleges and the University of Massachusetts.

Mount Holyoke is committed to fostering multicultural diversity and awareness in its faculty, staff, and student body and is an Equal Opportunity Employer. Women and persons of color are especially encouraged to apply.

DEC 10-291

#### \*MICHIGAN, GRAND RAPIDS.

Aquinas College's Department of Geography and Environmental Studies seeks an **Assistant/Associate Professor of Geography** for a tenure track position beginning August 2011. Teaching responsibilities include introductory courses in physical geography and other courses based on the department's needs and candidate expertise. Aquinas Faculty normally teach 12 credit hours per term. Other duties include mentoring students in undergraduate research, advising students and supporting the college mission.

Candidates should have a PhD, be broadly-trained in physical geography and committed to teaching geography in a liberal arts institution. The successful candidate will have demonstrated teaching ability and is expected to be professionally active.

Aquinas College was founded by Dominican Sisters in 1886. This Catholic liberal arts college, located in Grand Rapids, Michigan, has a global perspective and is growing in excellence and admissions with over 2200 students on a 107 acre wooded campus. Aquinas is committed to educating the whole person for a life and career of service through more than 60 majors, 14 undergraduate and graduate degrees, international internships, study abroad programs, 40 student clubs, and intramural and varsity athletics. Recent facility investments include the Grace Hauenstein Library, the Performing Arts Center and the Sturris Sports and Fitness Center.

For more information about Aquinas College, please visit: [www.Aquinas.edu](http://www.Aquinas.edu).

Apply: Interested candidates should send a resume, cover letter, statement of teaching philosophy and research interests, evidence of teaching quality, a curriculum vitae, and three letters of recommendation in which at least two address teaching ability to: Richard E. McCluskey, PhD, Chair, Department of Geography and Environmental Studies... c/o... Human Resources@Aquinas.edu.

Review of applications will begin January 15, 2011.

JAN 10-23

#### \*MICHIGAN, HOUGHTON.

Department of Social Sciences, Michigan Technological University **seeks up to two colleagues** to strengthen graduate programs in **Environmental and Energy Policy**. Research interests in policy areas (energy, water, sustainability, international development, environ-

mental justice) and plans for securing external research funding, ability to teach geospatial, survey, or qualitative methods courses. Tenure track, Assistant and/or Associate Professor level, to begin August 2011. PhD required.

Michigan Technological University is an Equal Opportunity/Affirmative Action Educational Institution/Employer. Minorities and women encouraged to apply. See <http://www.ss.mtu.edu/EP/EnvironmentalPolicyFacultySearches.htm> for additional information.

Apply: Send letter describing experience, research statement, teaching statement, curriculum vitae, and contact information for three references to: Kathy Halvorsen, Department of Social Sciences, Michigan Technological University, 1400 Townsend Drive, Houghton, MI 49931-1295; [kehalvor@mtu.edu](mailto:kehalvor@mtu.edu) or (906) 487-2824.

JAN 10-022

#### \*MICHIGAN, KALAMAZOO.

Western Michigan University invites applications and nominations for the position of **Assistant Professor of Geography/Environmental Studies**, pending budgetary approval. This position is a joint appointment with the Environmental Studies Program. The candidate is expected to strengthen the course offerings in both the Department of Geography and the Environment Studies Program. Expected courses include Introduction to Meteorology and Climatology; Nature and Society; Climate Change: Atmospheric Perspectives; Senior Seminar in Environmental Studies, as well as other relevant courses in atmospheric sciences. On-going research (preferably through external funding) and publication as well as serving on M.A. (Geography) theses, Department, College, and University committees are expected.

Qualifications: PhD in Geography, Atmospheric Sciences, or Earth Sciences, good oral and written communication skills, good teaching and research potential in atmospheric sciences. Desirable qualifications:

Expertise in meteorology/climatology, physical and human dimensions of climate change; expertise in geospatial technologies; teaching experience; strong commitment to externally funded research and publication.

Western Michigan University has been placed among 76 public institutions in the nation designated as research universities with high research activity by the Carnegie Foundation for the Advancement of Teaching. It has

a large and diverse population (ca 24,000). In addition to WMU, Kalamazoo is home to Kalamazoo College and Kalamazoo Valley Community College. Located halfway between Chicago and Detroit, greater Kalamazoo has a population of more than 250,000. With a highly diversified economy, the city is the focus of many cultural and sports events.

The College of Arts and Sciences is the largest in the university and consists of twenty-six departments in the Humanities, Social Sciences, and Sciences and mathematics, as well as several interdisciplinary programs. The Department of Geography offers the B.S., B.A. and M.A. degrees. The regular staff consists of 12 full-time (including the Chair), one term and four part-time faculty members. Approximately 15 graduate assistantships are awarded each year for teaching and research. Department endowment funds support faculty research and professional travel. The department has working relationships with Malinson Institute for Science Education, W.E. Upjohn Center for the Study of Geographical Change.

The Environmental Science Program is an interdisciplinary undergraduate program in the College of Arts and Sciences. Students majoring in Environmental Studies are required to have a second major, chosen from any college in the university. The regular staff consists of 10 full-time and 3 part-time faculty members. Nearly all of the full-time faculty members have a joint appointment. The department has six state-of-the-arts teaching laboratories, all of which are equipped with computers and software for instruction/research in physical geography, meteorology, geographic information systems, urban and regional planning, and remote sensing. It has a library/resource center for students, and research space for faculty.

Salaries are competitive. The academic year is eight months beginning in mid-August and continuing through mid-April. An extensive package of fringe benefits, including TIAA/CREF contribution, is provided. Starting Date: August, 2011. Review of applications will begin immediately, and will continue until the position is filled.

Apply: Please send curriculum vitae, cover letter discussing your qualifications, teaching philosophy and capacity, graduate transcripts, and three letters of recommendations to: Ben Ofori-Amoah, Professor & Chair, Department of Geography, 1903 W. Michigan, Western

Michigan University, Kalamazoo, MI 49008-5424. FAX: (269) 387-3442. E-mail: ben.ofori@wmich.edu.

Western Michigan University is an Equal Opportunity Employer consistent with applicable federal and state law. All applicants are encouraged to apply.

JAN 11-12

#### MICHIGAN, MARQUETTE.

The Department of Geography at Northern Michigan University invites applications for a tenure-track **Assistant Professor** to begin in August 2011. The Department is seeking a broadly trained **Climatologist** with the ability to teach introductory and upper level courses that may include Weather and Climate, Physical Geography, Introduction to Environmental Science, and Introduction to Geographic Research, as well as a new course in air quality to complement the Department's majors and areas of emphasis. The successful applicant will also demonstrate an active research agenda that is connected to environmental concerns in the Great Lakes region such as issues linked to ecosystems, large lakes, and global climate change.

Applicants should hold a PhD in Geography or closely allied discipline at the time of appointment. ABDs will be considered.

Apply for the position online at: <https://employe.nmu.edu>. The application must include a letter that details evidence of teaching effectiveness, professional accomplishments and scholarship, a Curriculum Vita, academic transcripts, and contact information (including e-mail address and phone number) for three references. Preference will be given to candidates who can demonstrate a strong commitment and ability to provide excellent undergraduate instruction, and to support existing department programs.

Review of applications will begin on December 10, 2010, and the position will be posted until January 10, 2011.

NMU is located on Michigan's beautiful Upper Peninsula, on the south shore of Lake Superior. The local environment offers outstanding opportunities for research and instruction, as well as an exceptional way of life. For information about the University and Department of Geography visit [www.nmu.edu](http://www.nmu.edu).

NMU is an equal opportunity, affirmative action employer, and is strongly committed to increasing the diversity of its faculty.

DEC 10-283

#### MICHIGAN, MOUNT PLEASANT.

Central Michigan University invites applications for **three tenure-track positions** in the newly-created CMU Institute for **Great Lakes Research (CMU-IGLR)**. Appointments will be considered at the rank of **Assistant, Associate or full Professor** depending on prior experience.

Applicants should have established research programs on some aspect of Great Lakes research or possess expertise that will allow them to develop such a program. Those with expertise in areas including, but not limited to: toxicology, hydrology, GIS and remote sensing, environmental analysis and modeling, climate change, biogeochemistry, aquatic chemistry, or aquatic biology are especially encouraged to apply. Applicants should be qualified to hold a tenure track position in a department within the College of Science and Technology (Biology, Chemistry, Computer Science, Geography, Geology and Meteorology, Mathematics, Physics, and the School of Engineering and Technology).

Successful candidates will be expected to develop and maintain a rigorous externally-funded research program involving undergraduate and graduate students and post-doctoral researchers and to participate in the activities of IGLR, including involvement in, and where appropriate, leading multidisciplinary research projects and proposals. Additional responsibilities include teaching one course per semester and university and departmental service.

Required Qualifications: PhD; prior success in obtaining, or the demonstrated potential to obtain, external funding; demonstrated effective communication skills; a commitment to excellence in undergraduate teaching and graduate education.

Preference will be given to candidates with expertise that complements that of existing CMU faculty working on the Great Lakes, to individuals who will strengthen the research programs at the Central Michigan University Biological Station on Beaver Island, and to those with postdoctoral experience.

Apply: Applications should include a CV, cover letter, statement of research interests and the names and contact information for 3 referees and must be submitted electronically through [www.jobs.cmich.edu](http://www.jobs.cmich.edu). Requests for further information may be addressed to the Director of CMU-IGLR, Dr. Donald Uzarski ([uzars1dg@cmich.edu](mailto:uzars1dg@cmich.edu)).



Classified by the Carnegie Foundation as a doctoral research university, CMU is recognized for strong undergraduate education and a range of focused graduate and research programs. CMU is a student-focused university with opportunities for leadership, internships, and off-campus volunteer programs. CMU, an AA/EQ institution, strongly and actively strives to increase diversity within its community (see [www.cmich.edu/aaeo/](http://www.cmich.edu/aaeo/)).

DEC 10-284

#### MICHIGAN, YPSILANTI.

Eastern Michigan University. The Department of Geography and Geology invites applications for a tenure-track **Urban and Regional Planning** position at the **Assistant Professor** rank. This is a full-time, eight-month appointment in the Urban and Regional Planning Program to begin September, 2011. Candidates are expected to hold a PhD (or be ABD) in Planning or a related field, although those with a professional master's degree, at least 18 hours of additional course work, and significant planning experience will be considered. Applicants should demonstrate experience or potential in teaching at both the undergraduate and graduate levels. Research, publications, grants, curriculum development, and advising are also important considerations to address in the application materials, as is community engagement/service.

Founded in 1975, EMU's Urban and Regional Planning Program includes an accredited undergraduate program with approximately fifty majors. The graduate program averages twenty-five actively enrolled students. Other programs in the department include Geography, GIS, Historic Preservation, and Earth System Science. New interdisciplinary program initiatives are currently underway in the areas of sustainability and in environmental studies/environmental science. The program is also interested in candidates who might contribute to other planning specializations such as housing and community development, transportation and land use, public policy, geo-tourism and economic development, or professional practice. The successful applicant will be expected to work with students at both the undergraduate and graduate levels, as well as successfully integrate with other programs in the department.

EMU's campus is located in Ypsilanti, near Ann Arbor and 35 miles from Detroit. The area offers excellent quality of life and amenities.

Review of applicants will begin January 17, 2011, and applications will be accepted until the position is filled. The Program's website is: <http://planning.emich.edu>. Additional information about the university can be found at: [www.emich.edu](http://www.emich.edu). Questions can be addressed to: Prof. Nina David, Search Committee Chair, Urban and Regional Planning Program, Department of Geography and Geology, Eastern Michigan University, Ypsilanti, MI 48197. E-mail (preferred): [ndavid@emich.edu](mailto:ndavid@emich.edu). Phone: (734) 487-7582.

Apply: Complete description and online application can be found at <http://www.emich.edu/academics>. Follow links under Academic Affairs "Jobs at EMU-Academics" to position #FA 1119E. For additional information contact the search committee chair.

DEC 10-298

#### MICHIGAN, YPSILANTI.

The Department of Geography and Geology, at Eastern Michigan University is accepting applications for a tenure-track **Historic Preservation Specialist** at the **Assistant Professor** rank. The full-time position in the Department's Graduate Historic Preservation program begins September 2011. The preferred candidate has PhD (or 18+ hours of post-graduate credits) in Historic Preservation, American Studies, Historic Architecture, Preservation Planning, Public History, Heritage Tourism, Tourism Geography, or related field. Demonstrated experience or potential in teaching, research, publications, and grants is required. Proficiency in developing online and hybrid courses is preferred. Teaching responsibilities may include preservation basics, adaptive use, architectural interpretation, building technology, vernacular architecture, grants and funding, heritage interpretation/tourism, Geo/sustainable tourism, and field methods. Review of applications will begin January 1, 2011.

Apply: All applications must be made online at <https://www.emujobs.com-Posting#FA1118E>.

Eastern Michigan University is an Equal Opportunity Employer and Educator.

DEC 10-280

#### MICHIGAN, YPSILANTI.

The Department of Geography and Geology invites applications for a tenure-track **Assistant Professor** position in **Geographic Education** with complementary interests in human, cultural or historical geography. This is a full-

time position in the Geography Program to begin September, 2011. A PhD or EdD is preferred, but candidates who have earned an MA/MS plus significant additional credit in Geography, or a related field are welcome. The successful candidate must commit to developing and implementing coursework to address the high geographic standards of Michigan's Grade Level and High School Content Expectations.

In addition to geographic education course development and teaching, candidates are expected to teach in their areas of expertise. Other responsibilities include advising of geography education majors/minors, work across campus to strengthen teacher training, and working to improve the teaching of geography.

Apply: All applications must be made online at <https://www.emujobs.com-Posting#FA1120E>.

Application materials should include a letter of application that includes a statement of qualifications and teaching and research interests; a detailed curriculum vitae that includes education, publications, teaching, and research experience; and the names, addresses, phone numbers, and e-mail addresses of at least three references familiar with your teaching and research experience and/or potential. The review of applications will begin January 17, 2011 and continue until the position is filled.

Eastern Michigan University is an Equal Opportunity Employer and Educator. Eastern Michigan University is located between Detroit and Ann Arbor, Michigan, and is one of the largest producers of K-12 teachers in the country. For additional information about the university see our website: [www.emich.edu](http://www.emich.edu).

DEC 10-281

#### \*MINNESOTA, DULUTH.

The Department of Geography at the University of Minnesota-Duluth invites applications for a tenure-track position at the **Assistant Professor** level, with the appointment beginning August 29, 2011. Applicants must have a PhD in geography at the time of application, and at least two years of teaching experience.

We seek a candidate with expertise in **Geographic Information Science**. The successful candidate will exhibit a strong commitment to undergraduate education, possess outstanding teaching skills, conduct an active research program and complement the department's existing areas of focus in cultural,

urban, physical, or environmental geography. Responsibilities will include teaching courses in Geographic Information Science, Quantitative Methods (particularly spatial statistics), and the candidate's additional area of specialty. Research and teaching experience in economic geography and/or sustainable development are particularly desirable, but not required. The successful applicant will advise undergraduate students in all three majors offered by the department, and actively contribute to the new GIS minor and certificate program.

The University of Minnesota-Duluth is one of four coordinate campuses of the University of Minnesota system. The Department of Geography at UMD currently has four tenured and tenure-track faculty, one non-regular full-time instructors, a full-time GIS lab manager, a full-time GIS research associate, and several part-time instructors. As a dynamic medium-sized department in the College of Liberal Arts, we oversee three undergraduate B.A. programs in Geography, Environmental Studies, and Urban and Regional Studies, with a total of over 170 majors. New GIS Minor and Undergraduate Certificate programs were added in Fall 2010. In addition, the department houses two interdisciplinary research and outreach organizations, the Center for Sustainable Community Development (CSCD), and the Center for Community and Regional Research (CCRR), both of which actively involve undergraduate students in applied research projects centered on local communities in Northeastern Minnesota. Faculty in the department are actively involved in research, innovative teaching methods and assessment, civic engagement, and service to the university. The department also collaborates with the College of Liberal Arts Geographic Information Sciences Lab.

Apply: Applicants must apply online at <https://employment.umn.edu>, requisition number 169559, and must submit electronically a cover letter, a current curriculum vitae, teaching and research statements, teaching evaluations, and the names, address, phone number, and email address of at least three references.

Applications will be considered complete upon receipt of all materials. Review of complete applications will begin January 18, and will continue until the position is filled. For questions about the application process, please contact the Department Head, Dr. Olaf Kuhlke, at (218) 726-7331, or [okuhlke@d.umn.edu](mailto:okuhlke@d.umn.edu).

The University of Minnesota is an equal opportunity educator and employer. If you need a reasonable accommodation for any part of the application and hiring process, please contact the University of Minnesota Disability Specialist at 218-726-7725. Smoking is prohibited on all UMD property. The smoking ban includes indoor facilities and the campus grounds, as well as all University vehicles.

JAN 10-021

#### MISSOURI, MARYVILLE.

Northwest Missouri State University. **Assistant Professor of Geography:** The Department of Geology/Geography at Northwest Missouri State University seeks a nine-month, tenure track position beginning August 15, 2011. The successful candidate will have a completed PhD by the time of employment. Individual must have background to teach entry-level courses in introductory geography and world cultural geography as well as the ability to teach maps and an upper-level regional course. Regional emphasis could include Africa, Asia, or Europe. Knowledge of GIS and GIS applications helpful. The Department of Geology and Geography offers degree programs leading to a B.A. and B.S. in Geography.

Apply: Submit a letter of application addressing the position and describing personal teaching experience and philosophy, transcripts of academic work, curriculum vitae, evidence of teaching excellence, list of references and three letters of recommendation to Dr. Renee Rohs, Geography Search Committee Chair, Department of Geology/Geography, Northwest Missouri State University, 800 University Drive, Maryville, MO 64468-6001.

Review of applications and supporting materials will begin on December 1, 2010 and continue until the position is filled. Northwest is an Equal Opportunity Employer.

DEC 10-262

#### NEVADA, RENO.

The Department of Geography at the University of Nevada, Reno, invites applications for a tenure-track position for an **Assistant Professor** with a focus on **urban planning** and responsibilities in the Land Use Planning Policy program. The desired start date is July 1, 2011.

Interests and specializations may include economic analysis, regional science, urban studies, historic preservation, planning law, planning ethics, planning policy, sustainable

development, or transportation. Primary teaching responsibilities will include courses in planning, and some introductory and advanced geography courses. The standard teaching load in the department is four courses or twelve total credit hours per year for faculty engaged in graduate education and research; specific assignments may vary. The candidate will be expected to sustain an active funded research program.

We offer a BA, BS, MS, and PhD in Geography, and an MS in Land Use Planning Policy. Land use and urban planning are critical fields of study in Nevada. A PhD in Geography, Urban or Regional Planning, or related field is required at the time of appointment. Experience in land use planning is desirable. Other preferred qualifications include experience in graduate program curriculum development and working with graduate students on local and regional planning issues.

Applications must be received by January 21, 2011 to be considered for the position. Women and members of underrepresented groups are encouraged to apply.

Apply: For complete position description and qualifications see <https://www.unrsearch.com/postings/8468> or the department website <http://www.unr.edu/geography/department/faculty-jobs>.

DEC 10-272

#### NEW JERSEY, GLASSBORO.

**Assistant Professor, GIScience/Environmental Planner**, Department of Geography and the Environment, College of Liberal Arts & Sciences—10 month full-time, tenure track position.

The Rowan University Department of Geography and the Environment invites applications for an **Assistant Professor** tenure track position to begin September 1, 2011. We seek a PhD specializing in **GIScience and Environmental Planning** or closely related field. The successful candidate will teach introductory and advanced courses in GIS and Planning focusing on issues of **environmental management and sustainability**. Development of advanced courses in the candidate's area of expertise is also welcome. We also expect an active research agenda and potential for securing externally funded research.

Qualifications: Applicants must have the PhD in hand by September 1, 2011.

More Information, please visit: [www.rowan.edu/jobs](http://www.rowan.edu/jobs) or [www.rowan.edu/colleges/](http://www.rowan.edu/colleges/)

las//departments/geography. All positions are contingent upon budget appropriations.

Procedure: Applications must include: letter of interest, curriculum vita, graduate transcripts, a one-page teaching statement, course evaluations, a research plan at Rowan and names and contact information of three references. You may also submit your application electronically to [hasse@rowan.edu](mailto:hasse@rowan.edu). Letters of recommendation must be furnished upon request. Applications must be received by January 15, 2010.

Apply: Dr. John Hasse, Department of Geography and the Environment, Rowan University, 201 Mullica Hill Road, Glassboro, NJ 08028. Telephone: (856) 256-4812.

E-mail: [hasse@rowan.edu](mailto:hasse@rowan.edu).  
DEC 10-273

#### \*NEW JERSEY, POMONA.

Richard Stockton College of New Jersey, School of Natural Sciences and Mathematics. Tenure Track **Assistant/Associate Professor, Environmental Science–Hydrology.**

The Richard Stockton College of New Jersey is an innovative liberal arts college, currently ranked among the top ten in its class. The college is on 1,600 acres located in the Pinelands National Preserve about one hour from Philadelphia. Stockton provides vast opportunities for interdisciplinary scholarly and pedagogic development. We are seeking an outstanding broadly trained Hydrologist strongly dedicated to teaching and scholarship in a liberal arts environment to join us September 1, 2011. Academic experience with culturally diverse populations is desired.

PhD required and post-doctoral experience, a plus. Primary teaching responsibilities include the teaching of undergraduate and graduate field oriented courses in hydrology/water resources, a Physical Geography course for majors, and a general education course. The successful candidate will also be encouraged to develop a research program fostering student collaboration and supported by external grants. The College provides internal grant programs to initiate projects. For further information, go to "Employment" at [www.stockton.edu](http://www.stockton.edu).

Apply: Send an application letter, a resume, brief statements about your teaching and research interests, and have three letters of recommendation sent to: Dean Dennis Weiss, School of Natural Sciences and Mathematics, The Richard Stockton College of New Jersey, AA 221, P.O. Box 195, Pomona, NJ 08240 (or by email to: [namsdean@stockton.edu](mailto:namsdean@stockton.edu)).

The College is an equal opportunity institution encouraging a diverse pool of applicants.

JAN 11-14

#### NEW YORK, ITHACA.

Tenure Track Position Announcement, Social Science and Climate Change, College of Agriculture and Life Sciences, Cornell University. Cornell University seeks applications from **social scientists** working in the area of **climate change** for a tenure track position at the **Assistant or Associate Professor** rank. Qualified applicants from any social science field must have an established record of scholarship with clear relevance to climate change issues, and should have demonstrated ability to participate in and/or lead interdisciplinary projects with teams. This "open department" search seeks to place outstanding candidates in departments they best match. Potential home departments are Applied Economics and Management, Communication, Development Sociology, and Natural Resources. The Cornell Center for a Sustainable Future is facilitating the hiring of several faculty members over the next three years in the social sciences, humanities, biological and physical sciences, and engineering.

Apply: Please see [www.ccsf.cornell.edu](http://www.ccsf.cornell.edu) for the complete listing and information on how to apply for this position.

Cornell University, located in Ithaca, New York, is an inclusive, dynamic, and innovative Ivy League university and New York's land-grant institution. Cornell University is an equal opportunity, affirmative action educator and employer. Applications from women and minorities are encouraged.

DEC 10-255

#### NEW YORK, ONEONTA.

The Department of Geography at the College at Oneonta invites applications for a tenure-track position at the rank of **Assistant Professor in GIS** with a start date of Fall 2011. This is a continuing position with an initial appointment of two years. The expectations include instruction, research, student advisement, college service, and continuing professional development. The College at Oneonta has 5900 students and approximately 450 faculty and offers over 60 undergraduate majors and nine graduate majors. The student to faculty ratio is 18:1. The Geography Department has a strong and growing undergraduate geography program and maintains the environmental planning concentration of an inter-disciplinary

environmental sciences program. Combined majors number over 90. The geography program has three tracks: general geography, urban and regional planning, and GIS. For information about the College or the Department, please visit [www.oneonta.edu](http://www.oneonta.edu) or [www.oneonta.edu/academics/geography](http://www.oneonta.edu/academics/geography).

Duties: Teaching responsibilities include GIS courses and Introductory Geography with the opportunity to develop other geography courses according to program needs and professional interest. Additionally, the successful candidate will conduct and publish research in his/her area of expertise, advise and mentor students, and engage in college service.

Qualifications Required: The ideal candidate will be a broadly trained geographer with the ability to teach GIS courses. A PhD in Geography or closely related field at time of appointment is required. The candidate must be an effective teacher with a strong commitment to undergraduate instruction. Excellent oral and written communication skills are expected.

Preferred Qualifications: Candidates able to teach Remote Sensing, Geography of the United States and Canada or courses in environmental studies will receive strong consideration. Preference will be given to those who are dedicated to incorporating undergraduates in their research endeavors. We especially welcome candidates who have experience working with diverse populations.

To Apply: <http://oneonta.interviewexchange.com/candapply.jsp?JOBID=21352>.

Please upload application letter, teaching and research statement, vitae, scanned copies of graduate transcripts (official at time of appointment), and three letters of recommendation. Original hard copies of reference letters should be sent to Dr. Tracy H. Allen, Search Committee Chair, Department of Geography, 317B Milne, SUNY Oneonta, Oneonta, NY 13820.

Review of applications will begin immediately and will continue until the position is filled. For other employment and regional opportunities, please visit our website at [www.oneonta.edu/admin/humres/Employment\\_Opp/](http://www.oneonta.edu/admin/humres/Employment_Opp/).

SUNY Oneonta values a diverse college community. Please visit our website on diversity at: [www.oneonta.edu/edu/navigation/diversity.asp](http://www.oneonta.edu/edu/navigation/diversity.asp). Moreover, the College is an EEO/AA/ADA employer. Women, persons of color, and persons with disabilities are encouraged to apply.

DEC 10-252



**NORTH CAROLINA, CHAPEL HILL.**

Department of Geography. University of North Carolina–Chapel Hill. Tenure-Track Assistant Professor Position: **Contemporary China/East Asia**—environment, health, work, migration, urbanization, or development.

The Department of Geography at the University of North Carolina at Chapel Hill seeks to hire a geographer with research expertise and experience in China and/or East Asia. The successful candidate should contribute to the department's clusters in development, environment, and/or social spaces, and to departmental strengths in regional dynamics of migration, work, urbanization, environment, health, and/or development. This is a tenure-track assistant professor level position to begin in July, 2011. A PhD degree in Geography or a related field is required by date of employment. The successful candidate will have a joint appointment with shared teaching and curricular responsibilities in the Curriculum in Global Studies.

The Department of Geography has a strong commitment to multi-disciplinary, interdisciplinary, and international research and teaching, and its faculty has a strong record of external research funding. The Department has strong links to related departments and research centers including the Carolina Asia Center, Carolina Population Center, Institute for the Environment, Center for Urban and Regional Studies, and the Global Research Institute, as well as strong relationships with centers and programs at nearby Duke University and North Carolina State University.

Apply: Applicants must apply online at <http://jobs.unc.edu/2500549>. Please attach a cover letter, a CV, and statements of teaching and research philosophies. In addition, four letters of recommendation should be sent to: Barbara Taylor Davis, Administrative Manager, Department of Geography, UNC-Chapel Hill, CB #3220, Saunders Hall, Chapel Hill NC 27599-3220, or by email to [bktaylor@email.unc.edu](mailto:bktaylor@email.unc.edu). Recommendation letters submitted by email must contain an electronic signature. Review of applications will begin January 3, 2011 and continue until the position is filled.

For additional information, contact Dr. Aaron Moody, Search Committee Chair, [aaronm@email.unc.edu](mailto:aaronm@email.unc.edu) (email); 919-962-5303 (voice), 919-962-1537 (fax); [www.unc.edu/depts/geog/](http://www.unc.edu/depts/geog/).

The University of North Carolina at Chapel Hill is an Equal Opportunity Employer.

Women and minorities are encouraged to apply.

DEC 10-263

**NORTH CAROLINA, CHAPEL HILL.**

University of North Carolina-Chapel Hill. The Center for Slavic, Eurasian, and East European Studies (CSEEEES) invites applications for a tenure track **assistant professorship** either in **Geography, Political Science, Public Policy, Sociology, or a related field**. Competitive candidates must have promising records of research in the areas of environment, energy, and/or sustainability, with specific expertise in **Central Asia or the Caucasus region**. The person hired will have a primary tenure-track appointment in an appropriate department and affiliate status in the Center for Slavic, Eurasian, and East European Studies (<http://cseees.unc.edu>) and the Curriculum in Environment and Ecology (<http://www.cee.unc.edu>), with an opportunity to pursue a research agenda as well as teach introductory and advanced courses in an exciting interdisciplinary environment.

Apply online at <http://jobs.unc.edu/2500534> and attach a letter of application and Curriculum Vitae. Four letters of reference should be sent directly to: Dr. Robert M. Jenkins, Director, CSEEEES, CB#5125, UNC-Chapel Hill, Chapel Hill, NC 27599-5125 USA. We will begin review of applications on December 1, 2010; applications will be accepted until the position is filled.

Women and minorities are strongly encouraged to apply.

DEC 10-264

**\*OHIO, CLEVELAND.**

Maxine Goodman Levin College of Urban Affairs, Cleveland State University, Cleveland, OH. **Assistant Professor in Urban Studies/Community Development.**

The Maxine Goodman Levin College of Urban Affairs at Cleveland State University seeks applications for a tenure track faculty member in urban studies at the assistant level. The position will start in August 2011. The newly hired faculty member must be able to contribute to our national ranking in urban policy/city management and be able to support the university's mission in engaged learning and its cross-campus initiatives in health and sustainable communities. The faculty member will teach in both graduate and undergraduate programs as needed.

We seek a colleague with expertise and training in urban studies broadly, with a specialization area in community/neighborhood development. Hiring is contingent on maintaining existing levels of funding from the state of Ohio. Minimum Qualifications: PhD in urban studies, urban or public policy, urban planning, urban sociology, geography, or a related field; ABD candidates must confirm completion of all requirements for the Ph.D. by July 1, 2011. Demonstrated research in urban studies/community and neighborhood development. Ability to teach undergraduate urban studies and urban policy and graduate urban policy/community development courses. Preferred Qualifications: Potential for engaged scholarship and thought leadership that will contribute to the areas of urban studies, urban policy and community development. A demonstrated research interest and/or professional experience in one or more of the following areas: neighborhood/community planning and development, demographic change, diversity management, nonprofit organizations, community engagement, community governance, or housing/real estate development.

Application Requirements: Applicants should submit a letter of interest, a curriculum vita, a sample syllabus. The letter of interest should include courses currently offered at the Levin College he or she is qualified to teach as well as a recommendation for a new course. A list of three references with contact information should be included and the letters sent under separate cover. The University does not accept electronic applications.

Apply: A hard copy of all materials should be sent to: Dr. William Bowen, Chair, Search Committee c/o Ms. Valerie Hicks, Department of Urban Studies, Levin College of Urban Affairs, Cleveland State University 2121 Euclid Avenue, Cleveland, Ohio 44115.

Review of applications will begin on December 10, 2010. Applications received by this date will be given full consideration. Open until filled. The Maxine Goodman Levin College of Urban Affairs webpage can be found at: <http://urban.csuohio.edu/>.

JAN 11-13

**\*OHIO, CLEVELAND.**

Maxine Goodman Levin College of Urban Affairs, Cleveland State University, Cleveland, OH. **Assistant Professor in Urban Policy/Economic Development.**

The Maxine Goodman Levin College of Urban Affairs at Cleveland State University

seeks applications for a tenure track faculty member in urban policy at the assistant level. The position will start in August 2011. The newly hired faculty member must be able to contribute to our national ranking in urban policy/city management and be able to support the university's mission in engaged learning and its cross-campus initiatives in health and sustainable communities. The faculty member will teach in both graduate and undergraduate programs as needed.

We seek a colleague with expertise in urban policy issues broadly, with a specialization area in policies and practice of local/regional economic development. Hiring is contingent on maintaining existing levels of funding from the state of Ohio. Minimum Qualifications: PhD in urban studies, urban/public policy, economic development, urban planning, geography, public administration, or a related field; ABD candidates must confirm completion of all requirements for the PhD by July 1, 2011. Demonstrated research in urban policy/economic development field. Ability to teach undergraduate courses in urban studies and urban policy and graduate courses in urban policy, including economic development. Preferred Qualifications: Potential for engaged scholarship and thought leadership that will contribute to the areas of urban policy and economic development. A demonstrated research interest and/or professional experience in one or more of the following areas: economic development strategies, the practice and process of local economic development, formulation and evaluation of economic development policies, or sustainable urban development/green economy.

Application requirements: Applicants should submit a letter of interest, a curriculum vita, a sample syllabus. The letter of interest should include courses currently offered at the Levin College he or she is qualified to teach as well as a recommendation for a new course. A list of three references with contact information should be included and the letters sent under separate cover. The university does not accept electronic applications.

Apply: A hard copy of all materials should be sent to: Dr. William Bowen, Chair, Search Committee c/o Ms. Valerie Hicks, Department of Urban Studies, Levin College of Urban Affairs, Cleveland State University 2121 Euclid Avenue, Cleveland, Ohio 44115.

Review of applications will begin on December 10, 2010. Applications received

by this date will be given full consideration. Open until filled. The Maxine Goodman Levin College of Urban Affairs webpage can be found at: <http://urban.csuohio.edu/>.

JAN 11-06

#### OREGON, CORVALLIS.

**Geographic Information Scientist. Assistant Professor.** Oregon State University, Department of Geosciences seeks candidates for a full-time (1.0 FTE), 9-month, tenure-track Assistant Professor appointment, to begin September 2011. We seek applicants trained in **geovisualization and cartography** engaged in interactive visualization, image cognition, human-computer interaction, novel display media, or related approaches to Geosciences research ([http://geo.oregonstate.edu/Dept\\_Research\\_Areas](http://geo.oregonstate.edu/Dept_Research_Areas)).

Candidates must be able to teach map and image analysis and computer and multi-media cartography, as well as an area of specialization. A PhD is required in geography, geology, earth science or a closely related field, with experience in computer science and/or information technology a plus. Preference will be given to candidates with a demonstrated ability to initiate and publish research, to obtain funding from competitive sources, to teach effectively at the undergraduate and graduate level, to collaborate in interdisciplinary groups, and to develop a dedicated geovisualization/cartography laboratory. The successful applicant must show a commitment to advancing the participation of diverse groups and supporting diverse perspectives. Salary will be competitive.

Apply: to review posting and apply, go to <http://oregonstate.edu/jobs/>, posting #0006462. Closing date is January 15, 2011.

OSU is an AA/EEO and is responsive to dual-career needs.

DEC 10-288

#### PENNSYLVANIA, EAST STROUDSBURG.

**Instructor of Geography #2010000346.** The Department of Geography of East Stroudsburg University invites applicants for a full-time temporary instructor position beginning Fall 2011 for the full academic year. Responsibilities include teaching world regional geography, other introductory human geography courses and upper division courses in the following areas: regional geography, Urban/Economic Geography, and GIS. The successful candidate is also expected to engage in scholarly activity,

and provide service to the department, university, and community. Teaching may include distance learning and/or off campus teaching.

Required Qualifications: A Masters in geography. PhD is preferred. ABD candidates are encouraged to apply. Candidates currently enrolled in a doctoral program are encouraged to apply, but should make clear what progress they have made toward completion. Final determination will be based upon a successful interview, which will include a teaching demonstration.

Preferred Qualifications: Preferred areas of specialization include: Urban or Economic Geography, GIS/Remote Sensing, and a regional specialty in Africa, Europe, or Latin America. A strong background in undergraduate and/or graduate teaching, on-line teaching, and working with diverse student populations are also preferred. We welcome applications from candidates who bring diverse cultural, ethnic and national perspectives to their creative work and teaching and the University encourage applications from members of historically under-represented groups, including women, veterans, and persons with disabilities, and is an AA/EEO employer. East Stroudsburg University is interested in hiring employees who have extensive experience with diverse populations. To learn more about diversity at ESU and in our community, visit our website at [www.esu.edu/diversity](http://www.esu.edu/diversity).

Apply: Full consideration will be given to applications received by February 15, 2011. Apply at: [www.esucareers.com/applicants/Central?quickFind=51876](http://www.esucareers.com/applicants/Central?quickFind=51876). Applicants are to attach a cover letter, candidate's vitae, unofficial transcripts and three letters of recommendation. Failure to submit all the required materials may lead to the candidate not being considered. All candidates must provide proof of eligibility to work in the United States. Offers of employment are contingent upon successful completion of a background check.

For confidential reference letters submissions and transcripts through an agency, institution and/or an individual please mail directly to [dwielebinski@esu.edu](mailto:dwielebinski@esu.edu) or to the Faculty Search and Recruitment Coordinator at East Stroudsburg University, PO Box 447, East Stroudsburg, PA 18301. You may make a notation in the text box for the requested documents that they will be forwarded to the Faculty Search & Recruitment Office directly. Please be advised that your application is not complete until you have received an electronic confirmation.

East Stroudsburg University of Pennsylvania (ESU) is located in Northeastern Pennsylvania adjacent to the scenic Pocono Mountains and the unspoiled Delaware Water Gap National Recreation Area. Founded in 1893, ESU is one of fourteen university members of the Pennsylvania State System of Higher Education and has a current enrollment of 7,576. Both the enrollment and the picturesque campus have experienced substantial growth in recent years as a result of, among other factors, the university's reputation for academic excellence and strategic planning. Offering 58 undergraduate degree programs and graduate degrees in 23 fields of study, the university is poised for continued growth. The surrounding community offers options for suburban, small city, or country living all within a less than two hour drive to both New York City and Philadelphia.

DEC 10-261

**\*TEXAS, KINGSVILLE.**

The Department of Physics & Geosciences at Texas A&M University-Kingsville invites applications for a tenure-track **Assistant Professor of Geosciences** with expertise in **Remote Sensing/Geographic Information Science and atmospheric/oceanographic sciences**, beginning August 2011. Primary responsibilities of the faculty member will be to: 1) offer undergraduate courses in GIS and physical geography (meteorology/oceanography); 2) coordinate the GIS Certificate Program; 3) develop a program for undergraduates in GIS; and 4) help establish an Interdisciplinary GIS Center.

Candidates must be comfortable working across disciplines, teaching courses to a diverse student clientele, and mentoring undergraduate research projects. The ability to obtain external funding is vital, as is an overall commitment to excellence in teaching, research, and service. A Ph.D. in Geography is preferred, although applicants with a PhD in atmospheric science/oceanography will be considered. Salary and benefits are competitive.

Apply: Applicants need to submit a letter describing research and teaching interests, CV, evidence of teaching excellence, copies of publications and contact information for three references by visiting <https://javjobs.tamuk.edu>.

For questions, contact Dr. Thomas McGehee, Chair, Geosciences Search Committee at [kftlm00@tamuk.edu](mailto:kftlm00@tamuk.edu) or 361-593-

3590. Applications will be reviewed until the position is filled.

JAN 10-19

**\*UTAH, SALT LAKE CITY.**

University of Utah. The Department of Geography at the University of Utah in Salt Lake City invites applications for a tenure-track position at the **Assistant Professor** level starting July, 2011. The successful applicant will be engaged in research in **medical and/or health geography**, specifically in Disease Ecology, Environmental-Spatial Epidemiology, Public Health, and/or Population Health.

Preference will be given to candidates with strong quantitative, computational and/or GIS skills. The ability to collaborate with faculty within the Department of Geography and participate in interdisciplinary research at the University of Utah is highly desirable. Also desirable is the ability to teach and support research in spatial statistics and analysis, courses in the candidate's area of expertise and core human geography courses.

The University of Utah has unparalleled opportunities for collaborative research on public health and epidemiology issues. The College of Social and Behavioral Science has a program in behavioral health science and a new Veterans Studies Center. The School of Medicine has programs in public health, family and preventive medicine, pediatrics, medical informatics and nursing informatics. Associated with the university health sciences complex is the Huntsman Cancer Institute, a world-class clinical and research institute that maintains the unique Utah Population Database with demographic, genetic and family history records for approximately 6.4 million individuals. The Department of Geography's DIGIT laboratory and the state Automated Geographic Reference Center maintain abundant and available GIS data for the state and have active collaborations with the medical and health communities.

Applications should consist of a letter of application, vitae, statement of research, statement of teaching, teaching evaluations (if available), and the names, addresses, phone numbers and email addresses of exactly four references.

Apply: Applications will only be accepted electronically. Please submit your application as a single PDF file to [healthposition@geog.utah.edu](mailto:healthposition@geog.utah.edu).

The due date for applications is February 18, 2011; applications received after the

deadline may be considered until the position is filled. For more information on the Department of Geography, see [www.geog.utah.edu](http://www.geog.utah.edu). Questions on the position can be directed to George F. Hepner, Chair [george.hepner@geog.utah.edu](mailto:george.hepner@geog.utah.edu).

The University of Utah values candidates who have experience working in settings with students from diverse backgrounds, and possess a strong commitment to improving access to higher education for historically underrepresented students. The University of Utah is fully committed to affirmative action and to its policies of nondiscrimination and equal opportunity in all programs, activities, and employment.

Employment decisions are made without regard to race, color, national origin, sex, age, status as a person with a disability, religion, sexual orientation, gender identity or expression, and status as a protected veteran. The University seeks to provide equal access for people with disabilities. Reasonable prior notice is needed to arrange accommodations. Evidence of practices not consistent with these policies should be reported to Director, Office of Equal Opportunity and Affirmative Action, (801) 581-8365 (V/TDD).

JAN 11-11

**\*VERMONT, COLCHESTER.**

Tenure-Track Position in **Environmental Studies**. Saint Michael's College seeks to hire a full-time, tenure-track faculty member to start August 2011 in our rapidly growing interdisciplinary Environmental Studies program which brings together faculty in the humanities, pre-professional fields, natural and social sciences. The ideal candidate's research interests will be in physical geography, hydrology, hydrogeology, geomorphology or environmental science with a focus upon water. Preference will be given to candidates whose work connects to fields in the environmental social sciences and/or the humanities. We seek a colleague with broad interdisciplinary training in environmental studies who integrates classroom and laboratory approaches to teaching in a liberal arts environment, and provides significant undergraduate research opportunities. Courses in the program feature fieldwork in the rich natural environments of Vermont. The person in this position will team-teach core courses and the senior capstone in Environmental Studies, courses for the liberal studies science requirement and possibly other upper-level



courses within Environmental Studies or Geography. Ability to teach GIS is desirable. A PhD is required by the start of employment; postdoctoral research or equivalent research/work experience is preferred.

Saint Michael's College, a Catholic, residential, liberal arts college with an undergraduate enrollment of 2000 students, is an equal opportunity employer, committed to fostering an inclusive, multi-cultural, multi-ethnic environment for its students, faculty, and staff. In their cover letters, applicants are encouraged to address their potential contribution to the promotion of this diversity. Applicants should demonstrate a commitment to undergraduate teaching and be supportive of the mission of the College.

Apply: Candidates must apply online at [smcvt.interviewexchange.com](http://smcvt.interviewexchange.com) and will be required to electronically upload a cover letter, Curriculum Vitae, statement of teaching philosophy and research interests involving undergraduates, pdf's of scanned unofficial copies of undergraduate and graduate transcripts, and the contact information for three references. Confidential reference letters and official graduate transcripts may be requested later in the process. Contact Person: Dr. Valerie Banschbach, Search Committee Chair ([vbanschbach@smcvt.edu](mailto:vbanschbach@smcvt.edu)).

Applications will be accepted until the position is filled, with formal review starting November 15, 2010.

JAN 11-02-0

#### **VIRGINIA, BLACKSBURG.**

**Director, School of Public and International Affairs (SPIA).** The College of Architecture and Urban Studies at Virginia Tech seeks an innovative and dynamic leader to apply for the position of SPIA School Director with an expected start date of August 2011. A PhD is required. The Director is based in Blacksburg and interacts regularly with faculty, staff, and students there and in the National Capital Region and other sites in the Commonwealth.

Apply: applications and supporting documents (except reference letters) must be submitted online at [www.jobs.vt.edu](http://www.jobs.vt.edu) (paper documents cannot be accepted), reference posting # 0100810. For a complete position announcement including required application materials, visit [www.spia.vt.edu](http://www.spia.vt.edu). Application review will begin January 5, 2011. Virginia Tech is an equal opportunity/affirmative action employer.

DEC 10-260

#### **\*VIRGINIA, RICHMOND.**

The University of Richmond invites applications for an **environmental post-doctoral fellow** to begin summer 2011. The successful candidate will join our team for two years to pursue climate change related research from an interdisciplinary perspective and to develop teaching experience in the liberal arts tradition. Located adjacent to the James River, the University's urban location provides abundant opportunities to directly explore the impact of climate change on the environment, the demands that high-density settings create for residents, and how these might be influenced by a changing climate. The position offers a teaching load of two courses per year, supported research, and mentoring from a diverse project team including a landscape ecologist, political and economic geographer, social psychologist, marine biologist, and geologist.

Applicants must have received a PhD in an area related to environmental studies within the last five years. Preference will be given to candidates with expertise in watershed science in urban settings. Candidates with remote sensing experience and/or strong quantitative training in modeling social and physical processes are especially encouraged to apply.

Apply: Applicants should apply online at <http://www.urjobs.org> using the Staff (Salaried) link. Applicants will be asked to supply electronically a letter of application and curriculum vitae and should arrange for three letters of recommendation to be sent electronically to Dr. Todd Lookingbill at [tlooking@richmond.edu](mailto:tlooking@richmond.edu). Review of applications will commence immediately and continue until the position is filled.

The University of Richmond is committed to developing a diverse workforce and student body and to being an inclusive community. We strongly encourage applications from candidates who will contribute to these goals. For more information on the program, resources, and teaching assignments, see <http://environmental.richmond.edu/>. The position is funded by a grant from the Andrew W. Mellon Foundation to the Associated Colleges of the South.

JAN 11-25

#### **WASHINGTON, ELLENSBURG.**

**Graduate Assistants in Resource Management.** Central Washington University's Resource Management (REM) Graduate Program will

offer approximately ten (10) graduate assistantships for the 2011-2012 academic year. REM is an applied, interdisciplinary program that includes the Geography Department as a major participant. Applicants should have a bachelor's degree in Geography, or related field at the time of enrollment. Assistantships will involve a combination of research and teaching in the Geography Department.

Apply online at: <http://www.cwu.edu/~masters/forms/formsGraduate.html> Applications submitted before February 1 receive maximum consideration. For more information, please see <http://www.cwu.edu/~rem/> or contact co-director Karl Lillquist at [lillquis@cwu.edu](mailto:lillquis@cwu.edu).

CWU is an AA/EEO/Title IX Institution.

DEC 10-299

#### **WASHINGTON, ELLENSBURG.**

The Geography Department at Central Washington University invites applications for a tenure-track Geographer position at the **Assistant/Associate Professor** level beginning mid September 2011. Applicants are required to hold a PhD in geography or closely allied field at time of appointment and have expertise in **regional planning and GIS**.

Teaching responsibilities include land use planning, GIS, and introductory and advanced courses within the candidate's area of expertise. Preference will be given to candidates with: 1) teaching and research interests in regional planning and applications of GIS to planning, 2) expertise and the ability to teach courses in GIS, 3) commitment to high quality undergraduate and graduate teaching, 4) ability to involve undergraduates and graduates in research, and 5) demonstrated potential for scholarly contributions and securing grant/contract funding.

Apply: Please submit application online at: <http://jobs.cwu.edu>. Screening begins January 2, 2011.

CWU is an AA/EEO/Title IX Institution.

DEC 10-256

#### **WASHINGTON, SEATTLE.**

The Department of Geography in the College of Arts and Sciences at the University of Washington invites applications for a full-time, tenure track position as **Assistant Professor in environmental geography or nature-society relations**. The successful candidate will also possess a strong background in GIS (Geographic Information Science) and geovisualization, and will augment existing departmental

strengths in critical development studies and/or geographies of food and agriculture. The successful candidate will lead us into important new areas in political ecology and environmental science, including questions of energy resources and climate change.

University of Washington faculty engages in teaching, research and service. The normal teaching load in the Department of Geography is four courses per year. Other professional duties include an active research program, and service to the department and wider community. The University of Washington, a recipient of the 2006 Alfred P. Sloan award for Faculty Career Flexibility, is committed to supporting the work-life balance of its faculty. A PhD is required at the time of appointment in September, 2011. Preference will be given to applicants already holding a PhD.

Apply: Send a letter of application and CV, including the names and contact information of three references, to Lucy Jarosz, Search Committee Chair, Department of Geography, Box 353550, Seattle, WA 98195. Review of applications will begin on January 15, 2011. For status of opening please contact: Katharyne Mitchell, kmitch@uw.edu, 206-543-1494.

The University of Washington is an affirmative action, equal opportunity employer. The University is building a culturally diverse faculty and staff and strongly encourages applications from women, minorities, individuals with disabilities and covered veterans.

DEC 10-267

#### \*WEST VIRGINIA, ATHENS.

Concord University invites applications for a tenure-track **Assistant Professor** position in **physical geography and GIS** to begin August 2011. The PhD in geography is required at the time of appointment. A scholarly interest in a European, African, or Asian region is desirable. The successful applicant will demonstrate a strong commitment to undergraduate teaching and will be encouraged and supported in their pursuit of research and external funding. Concord University is a state-supported regional university of approximately 3,000 students. The geography program offers a B.A. in geography that may be complemented with an area of emphasis in cartography and GIS or in pre-environmental law. At the graduate level, M.Ed. students may complete a content specialization in geography. Concord University hosts the West Virginia Geographic Alliance and the Conference on Appalachian Geography.

Application review will start immediately and continue until the position is filled.

Apply: Please send cover letter, curriculum vita, and three letters of reference to Concord University, Human Resources, PO Box 1000, Athens, WV 24712.

Concord University is an affirmative action/equal opportunity employer. Women, minorities, and persons with disabilities are encouraged to apply.

JAN 11-24

#### WISCONSIN, MILWAUKEE.

Alverno College, a Catholic liberal arts college for women, seeks a full-time **Assistant Professor in Asian Studies** with a passion for teaching. The ideal candidate will have a specialty in geography, international business, and/or political science, but we will consider highly qualified candidates from other fields.

We seek a colleague who will help to develop the new Asian Studies program and who desires a leadership role. The successful candidate will have a track record of teaching excellence, proficiency in an East Asian language (Japanese, Korean, or Mandarin preferred), and the ability to work with students as an advisor and mentor. The individual will also teach introductory courses in their field as well as introductory and specialized topics courses in the Asian Studies program.

Apply: For more information about the position and how to apply, visit [http://depts.alverno.edu/hr/pdf/Asst\\_Prof-Asian\\_Studies.pdf](http://depts.alverno.edu/hr/pdf/Asst_Prof-Asian_Studies.pdf). Application deadline is January 15, 2011.

DEC 10-268

#### WISCONSIN, MILWAUKEE.

University of Wisconsin-Milwaukee. **Assistant Professor** tenure-track appointment beginning Fall 2011. PhD in Geography or closely related field required by time of appointment. The department is searching for a highly motivated **Geographic Information Science (GIS) specialist** who will complement the research interests and strengths of faculty in the Geography Department. The successful applicant will be expected to develop an active research program, including collaborative extramural grant proposals, show evidence of excellence in undergraduate and graduate teaching, possess superior technical skills, and establish research connections with other campus programs.

Apply: please see <http://jobs.uwm.edu/postings/5144>. Applications will be reviewed beginning on November 15, 2010 and continue until a suitable candidate is found.

The University of Wisconsin-Milwaukee is an Affirmative Action, Equal Employment Opportunity employer.

To learn more about our department, current faculty, and programs, visit our web page: <http://www.geography.uwm.edu>.

DEC 10-269

#### WISCONSIN, OSHKOSH.

University of Wisconsin Oshkosh seeks applications for tenure-track **Assistant Professor** position beginning September 1, 2011 to teach undergraduate courses in **Physical and Environmental Geography** that reflect departmental needs and candidate's professional expertise. Individual hired is expected to maintain active research program, pursue extramural funding, and advise majors. PhD in Geography or related discipline required. Candidate should provide evidence of excellence in teaching and scholarship. Ability to teach courses in physical and environmental geography, including large enrollment introductory courses in physical geography, required. Ability to teach Climatology or Soils courses, to interact with interdisciplinary Environmental Studies Program, and to utilize GIS/Remote Sensing or employ field-based activities in teaching and research preferred.

Apply: Submit letter of application, vita, 3 current letters of recommendation, transcripts (official or photocopy), philosophy of teaching statement, and description of research agenda by January 14, 2011 to Search Committee Chair, Department of Geography and Urban Planning, University of Wisconsin Oshkosh, Oshkosh, WI 54901-8642. (Fax: 920-424-0292)

Employment requires criminal background check. AA/EOE.

DEC 10-253

#### WISCONSIN, WHITEWATER.

University of Wisconsin-Whitewater. The Department of Geography and Geology is accepting applications for a tenure track **Physical Geography** position at the rank of **Assistant Professor** beginning August 2011. The department seeks a physical geographer with expertise in weather and climate, paleoclimatology, or hydroclimatology. Remote sensing and GIS skills highly desired. PhD required; ABD considered.

Teaching responsibilities will include Physical Geography, Human Environmental Problems, Meteorology and Climate, online

Weather and Climate, and other courses that complement our program needs. The candidate will be expected to develop upper level courses in their research area.

This position requires a strong commitment to undergraduate education. Prior teaching experience and demonstrated teaching ability preferred. Contributing to the department's internship program and involving students in research activities is essential. The hire will be required to monitor and maintain the campus weather station and weather data archive. The successful candidate will have an active research agenda, seek external research funding, and publish scholarly articles in peer reviewed journals.

Founded in 1868, UW-Whitewater is the premier public regional university with an enrollment of 10,500 in 45 undergraduate majors, 13 master's degree programs, and one specialist degree program. It offers high-quality career-oriented programs integrated with a model general education curriculum. UW-Whitewater is part of the 26-campus University of Wisconsin System. Located in a community of 12,000 residents near the scenic Kettle Moraine State Forest in southeastern Wisconsin, Whitewater is within convenient driving distance to the metropolitan areas of Milwaukee, Madison, and Chicago.

The Geography and Geology Department is housed in Upham Hall, which features state of the art research and teaching facilities including two dedicated GIS and remote sensing labs. Upham Hall also houses the biology, chemistry, and physics departments, which provides an excellent opportunity for interdisciplinary collaborations. The department of Geography and Geology has approximately 100 undergraduate majors.

Completed application packet must include: (1) letter of interest that includes qualifications and experience; (2) curriculum vita; (3) non-certified transcripts; and (4) three letters of reference. Electronic submissions preferred. Letter of recommendation must be sent from reference. Official transcripts will be required upon hiring.

Apply: Dr. Dale Splinter, Chair, Search Committee, Department of Geography & Geology, 800 W. Main Street, Upham Hall 120, Whitewater, WI 53190; Phone Number 262-472-5156; Email splinted@uww.edu.

Review of applicants will begin on January 3, 2011 and will continue until the position is filled.

The University of Wisconsin-Whitewater is an Equal Opportunity and Affirmative Action Employer, and actively seeks and encourages applications from women, people of color, persons with disabilities, and all veterans. Names of applicants may be disclosed unless requested otherwise. Names of finalists will be released. New hire will be subject to a criminal background check as a condition of appointment.

DEC 10-277

### INTERNATIONAL

#### \*CANADA, ONTARIO, KINGSTON.

**Robert Gilbert Post-Doctoral Fellowship**, Department of Geography, Queen's University at Kingston, Ontario. Queen's University Geography Department welcomes applications from excellent junior scholars in **Earth System Science, environmental research, or the impact of human activity on the Earth System** for a two-year Robert Gilbert Post-Doctoral Fellowship appointment. Salary will start at \$40,000 plus benefits, with the possibility of an additional teaching stipend (for one semester-length course). Any teaching component of this position would be governed under the QUFA Sessional Agreement. The criteria for distinguishing between candidates are: excellence, the quality of the research proposal (max 1,000 words, crafted in consultation with full-time faculty in the Department), and the relevance of the research to that of full-time faculty. Applicants must be within two years of their PhD.

Apply: Applications should be sent to Paul Treitz, Head, Department of Geography, Queen's University, Kingston, ON, K7L 3N6 paul.treitz@queensu.ca and should include a curriculum vita and the names of three referees, in addition to the research proposal.

Except where prohibited by the terms and conditions imposed by the granting agency, applicants must also have applied for a major postdoctoral fellowship (e.g. NSERC PDF). Applications will begin to be reviewed on February 1, 2011 and will continue until the position is filled. Start date is flexible.

The department welcomes applications from women, visible minorities, aboriginal people, persons with disabilities, and persons of any sexual orientation or gender identity. All qualified candidates are encouraged to apply;

however, Canadian citizens and permanent residents will be given priority.

JAN 11-16

#### \*CANADA, ONTARIO, KINGSTON.

**Post-Doctoral Fellowship - renewable energy development & deployment**, Department of Geography Queen's University at Kingston, Ontario. Queen's University Geography Department welcomes applications from excellent junior scholars in **Earth System Science, environmental research, or the impact of human activity on the Earth System** for a **one-year Post-Doctoral Fellowship appointment**.

Salary will start at \$40,000 plus benefits. The successful candidate will have a demonstrated expertise in geographical information systems (GIS) and/or life cycle assessment pertaining to energy systems; knowledge of forestry, agriculture, energy cropping, or policy is helpful. The funding for this position comes from a combination of NSERC Strategic Network grants; the successful candidate will participate in these Networks and will benefit from interacting with scholars from across the country during the course of research. There is potential for the successful candidate to apply for and hold a Term Adjunct teaching appointment; any teaching component of this position would be governed under the Collective Agreement between Queen's and QUFA. The criteria for distinguishing between candidates are: excellence of the candidate, and the relevance of their research experience to the areas of interest.

Apply: Applications should be sent to Warren Mabee, Assistant Professor, Department of Geography, Queen's University, Kingston, ON, K7L 3N6 warren.mabee@queensu.ca and should include a detailed curriculum vita and the names of three referees.

Applicants may also have applied for a major postdoctoral fellowship (e.g. NSERC PDF). Applications will begin to be reviewed on February 1, 2011 and will continue until the position is filled. Start date is flexible.

The department welcomes applications from women, visible minorities, aboriginal people, persons with disabilities, and persons of any sexual orientation or gender identity. All qualified candidates are encouraged to apply; however, Canadian citizens and permanent residents will be given priority.

JAN 11-17



**CANADA, TORONTO.**

The Department of Geography at Ryerson University invites applications for a tenure-track position at the **Assistant Professor** rank. A PhD (or equivalent) in Geography is required by time of appointment. The position will be effective August 1, 2011, subject to final budgetary approval. The position targets candidates with a specialization in **Human Geography** and strong skills in **Geospatial Information Technology**. Candidates with innovative, critical, or applied perspectives on GIS are welcome to apply.

The Department of Geography offers an undergraduate program leading to a Bachelor of Arts (BA) and a graduate program leading to a Master of Spatial Analysis (MSA). Faculty members also contribute to interdisciplinary programs including Environmental Applied Science and Management, Immigration and Settlement Studies, and Policy Studies. The Department also offers two GIS certificates and has considerable links to the Centre for the Study of Commercial Activity in the Ted Rogers School of Management. The successful candidate will have opportunities to develop ties to the Centre and many other units on campus.

Experience in establishing research partnerships with private and/or public sectors is beneficial. The successful candidate will be expected to teach at the undergraduate and graduate levels, contribute to the MSA and BA programs through effective teaching and supervision, and to develop an externally-funded research program with an active publication record.

Ryerson is a thriving university located in downtown Toronto, Canada, and has a full-time registration of nearly 28,000 undergraduate and 2,000 graduate students as well as 61,000 continuing education registrations. For more information about the Geography Department see [www.geography.ryerson.ca](http://www.geography.ryerson.ca). Consideration of applications will begin on January 10, 2011. The competition will remain open until suitable candidates are identified.

Applicants should submit curriculum vitae, statements of research and teaching interests,

samples of recent publications, and the names and contact information (e-mail address and telephone numbers) of three references who may be contacted. Please note that applications by fax or e-mail cannot be accepted.

Apply: Applications/Inquires can be sent to: Dr. Ian Lindsay, Search Committee Chair, Department of Geography, Ryerson University, 350 Victoria Street, Toronto, Ontario, M5B 2K3 ([ilindsay@geography.ryerson.ca](mailto:ilindsay@geography.ryerson.ca)).

This position falls under the jurisdiction of the Ryerson Faculty Association (RFA). The RFA collective agreement can be viewed at: [www.ryerson.ca/teaching/employment\\_resources/rfa.html](http://www.ryerson.ca/teaching/employment_resources/rfa.html). The RFA's website can be found at: [www.ryerson.ca/~rfa/](http://www.ryerson.ca/~rfa/). A summary of RFA benefits can be found at: [www.ryerson.ca/hr/working/etoolkit/benefits/rfa/](http://www.ryerson.ca/hr/working/etoolkit/benefits/rfa/).

Ryerson University has an employment equity program and encourages applications from all qualified individuals, including Aboriginal peoples, persons with disabilities, members of visible minorities, and women. Members of designated groups are encouraged to self-identify. All qualified candidates are encouraged to apply; however, Canadians and permanent residents will be given priority.

DEC 10-254

**\*CANADA, ONTARIO, LONDON.**

The Department of Geography at The University of Western Ontario is seeking applications for a probationary (tenure-track) position for a **Physical Geographer** with expertise in environmental change at the rank of **Assistant Professor** commencing July 1 2011. We seek an outstanding individual with demonstrated commitment to excellence in research and teaching. The candidate must have a PhD and a strong record of scholarly activity. Applicants are sought in support of a strategic focus on populated landscapes and human modification of landscapes and processes. The perspective may be temporal or spatial at local to global scales combined with expertise in field, lab or computer techniques.

The successful applicant is expected to have a strong background and research record/potential in physical sciences, yet to be comfortable and capable of graduate and undergraduate teaching/supervising, and researching within a Social Science faculty and on collaborative projects combining the natural and social sciences. The appointment is intended to consolidate the Physical Geography cluster within the department and to bring complementary skills pertinent to other strategic foci on Urban Systems, Geographic Information Science, and Environment, Development and Health. Potential collaboration with other groups across campus, such as Environment and Sustainability, is an asset. Further information about the Department may be found at: <http://geography.ssc.uwo.ca/>.

The appointment is subject to final budgetary approval. Salary will be commensurate with experience.

Apply: Applications, including a statement of research and teaching interests, current curriculum vitae and the names and addresses of three referees, together with their e-mail, fax and telephone numbers, should be sent to: Dr. Dan Shrubsole, Professor and Chair, Department of Geography, The University of Western Ontario, 1151 Richmond St. N., SSC 2322, London, Ontario, N6A 5C2, Canada. Tel: (519) 661-3126; Fax: (519) 661-3750; E-mail: [dashrubs@uwo.ca](mailto:dashrubs@uwo.ca).

Closing date: January 14, 2011 or until position is filled. E-mailed applications will not be accepted.

Applicants should have fluent written and oral communication skills in English. All qualified candidates are encouraged to apply; however, Canadian citizens and permanent residents will be given priority. The University of Western Ontario is committed to employment equity and welcomes applications from all qualified women and men, including visible minorities, aboriginal people and persons with disabilities.

JAN 11-15 ■

## AAG Field Trips in Seattle

Member organized and led field trips are always an important part of any AAG Annual Meeting, and Seattle will be no exception. The city and the surrounding region offer many interesting possibilities across a broad range of geographical specialties. Those interested in organizing a field trip should visit [www.aag.org/annualmeeting](http://www.aag.org/annualmeeting) for the appropriate submission forms, or contact conference director Oscar Larson at [meeting@aag.org](mailto:meeting@aag.org) for more information. Descriptions of scheduled AAG field trips are available to registrants on the AAC's conference webpage. Additional trips are under development. Those registered for the conference may sign up for field trips at any time. Pricing for each trip is located on the Annual Meeting registration form on the conference website.

### William Ainsley

William Frank Ainsley, Distinguished Professor of Geography, Department of Geography and Geology, University of North Carolina-Wilmington, has died.

During a distinguished 36-year career at the University of North Carolina-Wilmington, Ainsley taught hundreds of students, both undergraduate and graduate, who benefitted from his outstanding abilities as a teacher and mentor. His considerable contributions were recognized with three significant awards: Ainsley was named



Ainsley

North Carolina Geography Educator of the Year in 2003, received the University of North Carolina Board of Governors Award for Teaching Excellence in 2004, and was awarded a University of North Carolina-Wilmington Distinguished Teaching Professorship in 2005. He was an active officer for the Pioneer America Society, receiving the society's Henry H. Douglas Distinguished Service Award in 2003.

Ainsley's research and teaching interests were wide-ranging. His substantial scholarship and teaching experience allowed him to author geography textbooks that have become the standard in public school systems across North Carolina. Among his many interests were immigrant farm colonies and preservation of historical buildings and sites. Friends, colleagues and former students will remember him as a huge Buddy Holly fan who gave his annual "Buddy Holly lecture" to geography classes each February 3, the day of Holly's death.

Ainsley held numerous degrees, including an A.B. degree in Biblical Studies, University of North Carolina-Chapel Hill, 1966; a Masters of Divinity, Southeastern Theological Seminary, Wake Forest, NC, 1969; a Masters in Geography, University of North Carolina-Chapel Hill, 1972; and a PhD in Geography, University of North Carolina-Chapel Hill, 1977.

### Howard Critchfield

Howard John Critchfield ("Critch"), Professor Emeritus of Geography at Western Washington University, died peacefully at home November 17, age 90.

He was born September 24, 1920 in Vernon, Colorado, to Mabel and Owen Critchfield, both schoolteachers. Critchfield graduated high school in Bonners Ferry, Idaho. After completing a two-year teacher's training course at the Lewiston State Normal School (now Lewis-Clark State College), he taught for a time in a one-room schoolhouse where the pupils called him "Howie."

Critchfield served in the Army Air Corps/Air Force during World War II. He received specialized Arctic and Weather Observation training and was eventually posted to the 16th Weather Squadron in Nome, Alaska. After an Honorable Discharge early in 1946, the GI Bill led to academic successes.

Critchfield received a BA in Geography and an MA in Geography and Climatology from the University of Washington. A Carnegie Grant, a Fulbright Award, and grants from the New Zealand Department of Internal Affairs enabled him to undertake research in New Zealand from 1948-1950. The University of Washington awarded Critchfield his Doctorate in 1952.

His dissertation was *The Agricultural Geography of Southland, New Zealand*.

Critchfield joined the faculty of Western Washington University in 1951. He retired in 1988. During his tenure he served as Chair of the Geography Department, was the official State Climatologist of Washington, through appointment by the Governor, and he pursued his research with travel, sabbaticals, and visiting lectureships and exchanges which took him to New Zealand again and again, as well as to Australia, South Asia, Europe, Japan, India and Nepal, South Africa, Micronesia, and Oman. He authored the acclaimed textbook *General Climatology*. Long before Wikipedia, Critchfield was well known for his contributions to *Encyclopedia Americana* and *The World Book Encyclopedia*. His lifelong enthusiasm for exploring the world

and for the exactitude of the natural sciences made him a resourceful guide to students, colleagues, and friends.

### Rex Honey

Rex Dean Honey, Professor of Geography at The University of Iowa, died suddenly at his home on October 23, 2010. He was 65.

Honey was born in San Diego and received his B.A. with honors from the University of California, Riverside (1967) and his PhD from the University of Minnesota (1972). He joined The University of Iowa as an Assistant Professor in 1974 and at different times served as Director of Global Studies, Associate Director of the Center for Human Rights, and Director of African Studies. His professional specialties were in political geography, specifically in the political organization of space and global aspects of human rights. Honey was Chair of the West Lakes Division of the AAG in 1982-1983 and again in 2005-2007; Co-Chair of the Ethics, Values and Human Rights Specialty Group of the AAG (2001-2003); and Secretary of the Commission on Geography and Public Policy of the IGU (2000-2004).

Honey's early papers reflected his studies of the spatial organization of public services in England, the U.S., New Zealand and Jordan. Later work focused on Nigeria and the developmental effects of home town associations there. His more recent writing addressed global development themes and issues of human rights. He supervised the PhD dissertations of nine students and was adviser to thirty-six M.A. students at The University of Iowa.

Throughout his professional career, Honey pursued his interest in geography education, taking teachers from Geographic Alliance programs to Nigeria, India and Bangladesh. He traveled extensively, giving many lectures in geography departments throughout the world. Prevented by his untimely death was his plan next semester to visit India and teach a course on human rights.

Please send information for necrologies to [newsletter@aag.org](mailto:newsletter@aag.org).

## 2011

### JANUARY

18-21. Geospatial World Forum. Hyderabad, India. [www.geospatialworldforum.org/2011/home.htm](http://www.geospatialworldforum.org/2011/home.htm).  
19-21. ESRI Federal User Conference. Washington, DC. [www.esri.com/events](http://www.esri.com/events).

### FEBRUARY

17-19. The 7<sup>th</sup> Savannah Symposium, "The Spirituality of Place." Savannah, GA. [www2.scad.edu/architectural-history/symposium/2011/](http://www2.scad.edu/architectural-history/symposium/2011/).

### MARCH

24-25. 42<sup>nd</sup> Annual South Dakota State Geography Convention. Brookings, SD. [www3.sdstate.edu/academics/colleageofartsandsciences/geography](http://www3.sdstate.edu/academics/colleageofartsandsciences/geography).

### APRIL

**12-16. AAG Annual Meeting**  
Seattle, WA. [www.aag.org](http://www.aag.org).

### MAY

17. Rothermore American Institute, "Building an American Empire." Oxford. [www.rai.ox.ac.uk](http://www.rai.ox.ac.uk).  
17-18. Association for Borderlands Studies conference, "Fences, Walls and Borders: State of Insecurity?" Montreal. [www.absborderlands.org](http://www.absborderlands.org).  
24-25. National Geographic Bee. Washington, DC. [www.nationalgeographic.com/geobee](http://www.nationalgeographic.com/geobee).

### JUNE

2-5. European Association of Geographers Congress. Athens, Greece. [www.eurogeography.eu](http://www.eurogeography.eu).  
20-24. Ninth International Conference on Military Geosciences. Las Vegas, NV. [www.icmg.dri.edu](http://www.icmg.dri.edu).  
28-July 1. Third Global Conference on Economic Geography. Seoul, South Korea. [www.space-economy.org](http://www.space-economy.org).

### JULY

3-8. 25<sup>th</sup> Conference of the International Cartographic Association. Paris. [www.icc2011.fr](http://www.icc2011.fr).  
10-15. International Medical Geography Symposium. Durham, U.K. [www.dur.ac.uk/geography/conferences/imgs](http://www.dur.ac.uk/geography/conferences/imgs).  
14-16. National Conference on the Suburbs and the 2010 Census. Arlington, VA. <http://policy.gmu.edu/tabid/86/default.aspx?uid=151>.  
25-29. Regional Meeting of Graduate Students of Latin America (EGAL). Costa Rica. [www.egal2011.geo.una.ac.cr](http://www.egal2011.geo.una.ac.cr).

### AUGUST

1-7. National Conference on Geographic Education (NCGE). Portland, Oregon. [www.ncge.org](http://www.ncge.org).  
12-16. Sixth International Conference of Critical Geography. Frankfurt, Germany. [www.iccg2011.org](http://www.iccg2011.org).

31-Sept 2. RGS/IBG Annual International Conference. London. [www.rgs.org/AC2011](http://www.rgs.org/AC2011).

### SEPTEMBER

14-16. International Conference on Spatial Thinking and Geographic Information Sciences (STGIS2011). Tokyo, Japan. <http://curricula.csis.u-tokyo.ac.jp/stgis2011>.

### NOVEMBER

14-18. IGU 2011 Regional Geography Conference. Santiago, Chile. [www.ugi2011.cl](http://www.ugi2011.cl)

## 2012

### FEBRUARY

**24-28. AAG Annual Meeting**  
New York, NY. [www.aag.org](http://www.aag.org).

## 2013

### APRIL

**9-13. AAG Annual Meeting**  
Los Angeles, CA. [www.aag.org](http://www.aag.org).

## 2014

### APRIL

**8-12. AAG Annual Meeting**  
Tampa, FL. [www.aag.org](http://www.aag.org).

## 2015

### APRIL

**21-25. AAG Annual Meeting**  
Chicago, IL. [www.aag.org](http://www.aag.org).

## Call for Participants: AAG Diversity Ambassadors

Would you like to make a difference by broadening participation and enhancing diversity in geography? Would you like to meet others interested in doing the same? If the answer is yes, the AAG invites you to serve as a Diversity Ambassador at our upcoming Annual Meeting in Seattle, to be held April 12-16, 2011.

Founded in 2008, the AAG Diversity Ambassadors are a group of volunteer graduate students who share their experiences and give advice about graduate school, college life, job searches and networking. This is an informal venue that seeks to provide an open forum to share recent success stories, engage in conversations regarding recruiting and retention strategies, understand student and faculty mentoring needs, and encourage creative working relationships.

This is a great way to meet others studying and working in the field of geography. If you are interested in participating as a volunteer at the 2011 AAG Annual Meeting, please contact Patricia Solís ([psolis@aag.org](mailto:psolis@aag.org)) or Nate Sessoms ([sessoms@usc.edu](mailto:sessoms@usc.edu)). For more on the AAG Annual Meeting visit [www.aag.org/annualmeeting](http://www.aag.org/annualmeeting).



*Diversity Ambassadors engaged many visitors at the 2010 Annual Meeting.*



Association of American Geographers  
1710 Sixteenth Street NW  
Washington, D.C. 20009-3198

Periodicals  
postage paid  
at  
Washington,  
DC

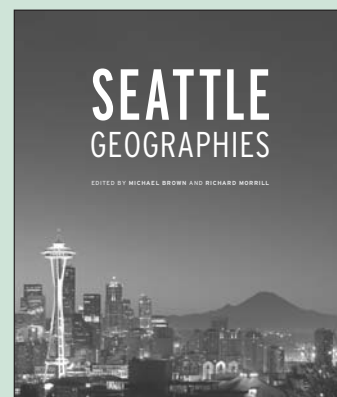
Publications Mail Agreement No. 40717519 Return undeliverable Canadian addresses to: PO Box 503, RPO West Beaver Creek, Richmond Hill, ON L4B 4R6

## Pre-Order Your Copy of *Seattle Geographies*

Pre-order the new book *Seattle Geographies* and you'll receive your copy when you check-in at the AAG Annual Meeting next April in Seattle. Use the conference registration form to order the book when you register for the Annual Meeting, or use the form to add the book after you register.

Edited by geographers Michael Brown and Richard Morrill, *Seattle Geographies* examines the city's broad range of social, economic, political, environmental, and cultural geographies—the dynamics that define Seattle and make it a unique and vibrant place. Contributors tackle issues as diverse as gentrification, the WTO protests, P-Patches, Grunge, and the geographical imagination. Guided by a strong sense of accountability to the region, the authors aim to assess the city's strengths and weaknesses, identify problems and propose solutions, and in doing so help Seattle to grow in positive, sustainable ways.

Please order by using the conference registration form available online at [www.aag.org/annualmeeting](http://www.aag.org/annualmeeting).



## Annals of the Association of American Geographers Call for Papers: 2013 Special Issue "Geography of Water"

The *Annals of the Association of American Geographers* invites abstracts of papers to be considered for a special issue on the Geography of Water. This will be the fifth of a series of annual special issues that highlight the work of geographers around a significant global theme. Papers are sought from a broad spectrum of scholars who address social, cultural, political, environmental, economic,

theoretical, and methodological issues focused on the geography of water. These include original research in such areas as water and conflict, spatial disparities in access to water-related services, water and global environmental change, water and habitats, analysis and simulation of water systems, water and risk, policy and law applied to water environments, and other relevant areas.

Abstracts of no more than 250 words should be submitted by **February 1, 2011** to [rmaier@aag.org](mailto:rmaier@aag.org). Final papers will be due (via Manuscript Central) by October 1, 2011 for publication in 2013. Papers will have a target maximum length of 5,000 words, with a smaller limit if a large number of tables and/or figures are included. All submitted papers will be subject to full peer review.