

## In This Issue



From the Meridian .....	2
President's Column .....	3
Washington Monitor .....	7
Award Deadlines .....	8
New Appointments .....	8
Profiles of Professional Geographers .....	9
Specialty Group News .....	10
Jobs in Geography .....	15
Necrology .....	20
Books Received .....	20
Geographic Centers .....	21
Of Note .....	21
Call for Papers .....	22
Members of Note .....	22
Events Calendar .....	23

## AAG Faculty Leadership Workshops Registration Now Open

June 2012, University of Colorado at Boulder

**R**egistration is now open for two summer workshops focusing on professional development – the AAG Department Leadership Workshop and the Geography Faculty Development Alliance Workshop, both scheduled for June 2012 in Boulder, Colorado.

The Department Leadership Workshop will convene June 13-16, 2012 and is for all geographers interested in improving their programs – chairs, deans, associate chairs, academic advisers, provosts and other administrators, as well as all faculty interested in leadership issues. The workshop is particularly well suited for individuals who will soon assume leadership positions and would like to network with other chairs and leaders. Register online at [www.aag.org/healthydepartments](http://www.aag.org/healthydepartments).

The Geography Faculty Development Alliance Workshop is designed with early career faculty and graduate students in mind. It will be held June 10-16, 2012 in Boulder at the University of Colorado. If you have recently hired new faculty, this workshop is an

excellent opportunity to help them get a strong start in your program. Graduate students and faculty from all institutions and departments are invited to attend. To register visit [www.aag.org/education](http://www.aag.org/education) and follow the link to Geography Faculty Development Alliance (GFDA).

Participants in these workshops will meet and work together in some sessions.

The University of Colorado is located along the scenic Front Range of the Rocky Mountains. Many participants arrange to spend a few extra days in Colorado before or after these workshops to travel or camp in the Rockies, and many local hiking and biking trails are available. Visitor information is available from [www.bouldercoloradousa.com](http://www.bouldercoloradousa.com), [www.explore-rocky.com](http://www.explore-rocky.com), [www.colorado.com](http://www.colorado.com), and numerous others websites.

Questions regarding either workshop may be addressed to AAG past president Ken Foote at [k.foote@colorado.edu](mailto:k.foote@colorado.edu). ■

## MyCOE to Showcase Sustainability Projects at Rio+20 Conference

[www.aag.org/mycoesubmit](http://www.aag.org/mycoesubmit)

**T**he AAG's My Community, Our Earth: Geographic Learning for Sustainable Development (MyCOE) Partnership is accepting submissions of student-led projects that address sustainable development challenges using geography, mapping, or GIS. Entries will be made available for public viewing and may be shared and voted upon by viewers. The most popular projects will be displayed during the Rio+20 United Nations Conference and will be eligible to receive special recognition and prizes. Projects should be submitted by June 1.

MyCOE's Sustainability Showcase will raise awareness of the importance of geography and geographic learning for sustainable development. The Rio+20 Conference for Sustainable Development will be held June 20-22, 2012 in Rio de Janeiro, Brazil ([www.uncsd2012.org/rio20](http://www.uncsd2012.org/rio20)).

Any new or existing project that uses geographic methods or analysis and maps to address sustainable development issues is appropriate for a MyCOE Project. Projects should be conducted by or with youth (including university students) whether as individuals or in groups. A simple online submission form requests contact information, a project title, at least one map with a description, at least one photograph with a caption, and a brief project summary. Additional optional materials such as webpage links, full reports, or videos can also be uploaded. Full

*Continued on page 4*



Los Angeles will be the site of the 2013 AAG Annual Meeting, to be held April 9-13. See page 24 for more.

**AAG Newsletter  
of the  
Association of American  
Geographers**

Douglas Richardson, Publisher  
and Managing Editor

Jim Ketchum, Editor

AAG Voice 202-234-1450

AAG Fax 202-234-2744

newsletter@aag.org

www.aag.org

USPS 987-380 ISSN 0275-3995

The AAG Newsletter ISSN 0275-3995 is published monthly with July/August combined, by the Association of American Geographers, 1710 16th Street NW, Washington, DC 20009-3198. The cost of an annual subscription is \$25.00. The subscription price is included in the annual dues of the Association. Not available to non-members. Periodicals postage paid in Washington, DC. All news items and letters, including job listings, should be sent to the Editor at the address below or to newsletter@aag.org.

All Newsletter materials must arrive at the Association office by the 1st of the month preceding the month of the publication. This includes job listings. Material will be published on a space available basis and at the discretion of the editorial staff.

When your address changes, please notify the Association office immediately. Six weeks notice is necessary to ensure uninterrupted delivery of AAG publications. To assist the AAG office in your address change, include the address label with your change of address.

Postmaster: Send address changes to AAG Newsletter, 1710 16th Street NW, Washington, DC 20009-3198, or address@aag.org.

## An International Call for Authors

The AAG is accepting expressions of interest from prospective contributors to the forthcoming Wiley-AAG *International Encyclopedia of Geography*. The 15-volume work, to be published both in hard copy and online, will engage geographers, GIScientists, and geographic societies around the globe in preparing approximately 1,300 entries that reflect the international and interdisciplinary nature of modern geography.

What distinguishes this project from other encyclopedias is that it will be truly international. Because it has the institutional support of the AAG and other



Richardson

geographical associations from around the world, the encyclopedia will be updated on an ongoing basis, and, as such, it has the potential to become the authoritative reference work in the field of geography for decades to come. In addition, it will feature interactive online extensions to supplemental material and resources, as well as a timeline of key developments in the discipline and a section addressing the status of geography and geographical societies worldwide. The scope and range of the encyclopedia will permit a robust discussion of geography's myriad subdisciplines and engagement with ideas and topics from related fields.

The core editorial team includes Noel Castree (human-nature interactions), Michael Goodchild (GIScience and technology), Audrey Kobayashi (human geography), Weidong Liu (economic geography and regional development), Dick Marston (physical geography), and Douglas Richardson (Editor-in-Chief). Together with approximately forty Section Editors, the core editorial team will select contributors who will be invited to prepare manuscripts for one or more entries that reflect their areas of specialization. Selection of contributors will be completed in early 2013, with first drafts of assigned entries due for submission by January 1, 2014.

In-depth entries will cover key concepts and topics within all subfields of geography. The entries will range in length from 500 to 10,000 words, with a target mean of 3,500 words. The complete publication will total 5,000,000 words, or roughly 10,000 bound pages, including 1,000 illustrations, the majority of which will be printed in color.

In addition to peer-reviewed publication in what promises to be the most comprehensive geographical reference work, contributors will also receive two years of free access to the full online edition of the *International Encyclopedia of Geography*. The



Adams

encyclopedia is intended to reflect a broad range of perspectives within the discipline. Therefore participation by geographers who reflect a cross-section of nationalities, career stages, institutional affiliations, research specializations, and demographic backgrounds is strongly encouraged.

To be considered for this opportunity, please send a letter of interest that describes your topical expertise and a copy of your current CV to Joy Adams no later than November 1, 2012. For further information about the project, contact Joy Adams, Managing Editor, or Douglas Richardson, Editor-in-Chief.

A special session will be held at the 2013 AAG Annual Meeting in Los Angeles for those who wish to learn more about, contribute to, or offer ideas and other input regarding the project. Additional information about the Wiley-AAG *International Encyclopedia of Geography* is available at [www.aag.org/encyclopedia](http://www.aag.org/encyclopedia).

We look forward to working with you on this exciting and engaging endeavor in the years ahead. ■

Doug Richardson  
drichardson@aag.org

Joy Adams  
jadams@aag.org

## Can Geography Overcome Racism?

During the New York meetings, AAG Council created the Harold M. Rose Award for Anti-Racist Scholarship and Practice in Geography, named for a scholar who has contributed immensely to our discipline. This column addresses two questions: 1) Why Harold Rose? and 2) Why anti-racist?

Harold Rose was President of the AAG in 1976–77, and awarded AAG Lifetime Achievement Honors in 1996. After completing a PhD in Geography at the Ohio State University in 1960, he spent most of his career in the Department of Geography at the University of Wisconsin–Milwaukee. Rose has been a consistent proponent of research that addresses discrimination and segregation.

During the late 1960s and early 1970s, Harold Rose was one of a very small number of scholars who addressed geographies of racism. In 1969, Donald Deskins reviewed the literature on African Americans and racial issues to show that of the total of 58 articles ever written in geography journals, virtually all were historically or cartographically descriptive. He cites one exception, Richard Morrill's (1965) "The negro ghetto: Problems and alternatives," as "tacitly addressed to an American social problem." At that time, urban geography had reached a high level of quantitative sophistication and Morrill, like many contemporaries, used a diffusion model to describe ghetto expansion, but also posed heretofore ignored questions about process.

During the 1970s, geography was influenced by the civil rights movement and in the context of the "relevance debate" a few geographers began to address racial issues. Most refined and advanced the quantitative tradition, mapping and modelling residential segregation and diffusion to chart the growth and decline of African-American communities (other communities of color received scant attention at that time). Radical geography was also emerging, and several scholars addressed racial segregation along color lines in relation to theories of class.

But it was Harold Rose who, in 1970, shifted direction with an *Annals* article on "The development of an urban subsystem: The case of the Negro ghetto." Using techniques from the then rapidly developing field of behavioral geography, Rose depicted the ghetto as an ideological configuration resulting from social relations in which the assignment of territory played a role. He claimed that ghettos result in part because whites refuse to live with blacks, and blacks develop compensatory housing search strategies. Rose's detailed empirical findings constitute not only the first analysis of the social process of spatial segregation, but also a strong contribution to advancing urban geography as a process-based sub-discipline.

Turning to the second question, why anti-racism rather than a more positive focus on, for example, celebrating diversity? I believe that where diversity exists, or where geographers have made a significant contribution to towards achieving diversity, we should celebrate it. But Harold Rose made another contribution in 1978 when, in his past-presidential address to the AAG, he chose to discuss lethal violence involving black males as the "Geography of despair." He explained the importance of addressing real and urgent social problems, even on the happy occasion of a past-presidential address. Similarly, even on the happy occasion of endowing future recipients of this award, it will be important to recognize that before we can celebrate diversity we need to address the ongoing, real, and socially damaging effects of racism.

Many studies have shown that it is easier to celebrate diversity than to address racism, but that the result of the former is often to make non-racialized people feel virtuous without necessarily understanding or developing ways to combat the effects of racialization. The concept of diversity is therefore easily co-opted by neoliberal

regimes that market and commodify ethnic difference, celebrate self-help and entrepreneurial projects, and distance the state or institution from responsibility to effect social change. A focus on racism, in contrast, allows us to carry on the project pioneered by Rose and a small number of other geographers determined to understand the spatiality of a social process that produces difference, differentiation, segregation, violence, and oppression. There have been a few points along that road since the 1970s that call for celebration, but we have a long way to go. The Harold Rose Award, therefore, will acknowledge those who have contributed to overcoming racism, in scholarship and practice.

Harold Rose's legacy is that racism is a spatial process, enacted out of social choices over who belongs where. It took courage on the part of a small number of geographers in the 1970s to name racism and its effects. Now there are many more who would do so, but progress is slow and reticence strong. I hope that his award will be part of the shift toward greater understanding of a spatial process whose geography is long past its time. ■

Audrey Kobayashi  
kobayasi@queenssu.ca



Kobayashi

### REFERENCES

- Deskins, D.R. Jr. 1969. Geographical literature on the American Negro, 1949–1968: A Bibliography. *The Professional Geographer* 21 (3): 145–149.
- Morrill, R. L. 1965. The Negro ghetto: Problems and alternatives. *Geographical Review* 55:339–61.
- Rose, H. M. 1972. Spatial variation of black urban house-holds. *Annals of the Association of American Geographers* 62 (3): 530–531.
- Rose, H. M. 1978. The geography of despair. *Annals of the Association of American Geographers* 68 (4): 453–464.

# Great Plains-Rocky Mountains Team Takes Second Straight Geography Bowl Title

For the second straight year, the Great Plains-Rocky Mountains (GPRM) team took first place in the World Geography Bowl, an annual quiz competition for teams of college-level geography students representing the AAG's regional divisions. The competition is hosted annually at the AAG Annual Meeting. On February 27, eight teams competed at the conference hotel in New York.

The GPRM team earned a high score of 555 points in round-robin play, facing off against each team head-to-head and winning every match but the last. The championship round pitted the top two scoring teams in a match-up that featured a special guest at the scorer's table – AAG President Audrey Kobayashi. The final round was particularly hard fought as GPRM faced the perennial powerhouse Southeastern Division (SEDAAG). In the end, however, it was GPRM that pulled away with a correct and complete response to a six-part question, earning them a total of 130 points to SEDAAG's 110 and the continuing title of World Geography Bowl Champions.

The GPRM team comprised the top six scoring individuals from the Great Plains-Rocky Mountains Regional Bowl competition, held at the University of Colorado Denver in October 2011. The 2012 team was captained by Ben Detrixhe

(undergraduate and two-time State of Kansas Geography Bee winner, Kansas State University) and five other students: Kaelin Groom (undergraduate student, University of Colorado Denver), Tyra Olstad (graduate student, Kansas State University), Jill Ottman (graduate student, University of Wyoming), Sam Smith (graduate student, University of Colorado Boulder), and Jim Wells (graduate student, Kansas State University). The team was coordinated by Dr. Casey D. Allen from the University of Colorado Denver.

## 2013 World Geography Bowl – Los Angeles

The 2013 national final of the World Geography Bowl will be held at the AAG Annual Meeting in Los Angeles. Regional

competitions typically occur during the fall at respective AAG regional meetings, where regional teams for the national competition are usually formed. For more information on organizing a team, contact the World Geography Bowl national coordinator, Dr. Andrew Shears, Assistant Professor of Geography at the University of Wisconsin, Fox Valley ([www.uwfox.uwc.edu/academics/depts/geo](http://www.uwfox.uwc.edu/academics/depts/geo)); email: [andrew.shears@uwc.edu](mailto:andrew.shears@uwc.edu).

## Thanks to Sponsors and Volunteers

Organizers of the World Geography Bowl would like to express thanks to the countless volunteer question writers, moderators, judges, and scorekeepers who make the competition possible, and to the many students who competed throughout the country. World Geography Bowl organizers thank its sponsors – the National Geographic Society and the Association of American Geographers – who recognize the important role the competition plays in building a sense of community and generating excitement around geographic learning, and who generously donated prizes for the top teams and players and travel funds for students. Your continued support is truly appreciated. ■



Front Row, L-R: Jill Ottman (U. of Wyoming), Kaelin Groom (U. of Colorado Denver), Audrey Kobayashi (AAG President), Sam Smith (University of Colorado Boulder), Back Row, L-R: Dr. Casey Allen (team coordinator, U. of Colorado Denver), Jim Wells (Kansas State U.), Tyra Olstad (Kansas State U.), Ben Detrixhe (Kansas State U.).

*MyCOE continued from page 1*

project guidelines are available at [www.aag.org/mycoesubmit](http://www.aag.org/mycoesubmit).

MyCOE and the AAG will participate in Rio+20 in a number of other ways. MyCOE submitted a Sustainable Development Learning Event for Rio+20 entitled "Engaging Stakeholders and Youth with Online and Near Real-Time Geography and GIS," to have Geography and GIS taught to policymakers, decision-makers, and international organizations during the Rio+20 United Nations Conference on Sustainable Development (UNCSD). Instructors will

include representatives from AAG, Esri and NASA's SERVIR Program.

The AAG has also been working with the USDA to include MyCOE in an event proposal submitted by USDA to the Department of State on "Empowering Youth to Use Geospatial Technologies to Achieve Sustainable Development." This event is specifically targeted for the U.S. Center in Rio.

The AAG is also working with the International Council for Science (ICSU) and the International Geographical Union (IGU) on a side event organized under a Major Group's

forum on Science, Technology and Innovation for Sustainable Development in collaboration with the U.S. State Department. This event, entitled "Young Innovators of Tomorrow," would pair MyCOE with Intel's technology for youth programs and also the First Lego League.

MyCOE partners include the AAG, U.S. Department of State, U.S. Department of Agriculture, USAID, Esri, United Nations Environment Program, USGS, NASA, National Geographic Society, and others. AAG serves as Secretariat. ■

## Three Geographers Named AAAS Fellows

Three distinguished geographers have been elected as Fellows of the American Association for the Advancement of Science (AAAS), the world's largest general scientific society and the publisher of *Science*, one of the best known and most widely read general science journals in the world. **Peter Rogerson** (State University of New York at Buffalo), **John Kelmelis** (Penn State University), and **Daniel A. Griffith** (University of Texas at Dallas) were among those AAAS members recognized as 2011 Fellows by their peers for their scientifically or socially distinguished efforts to advance science or its applications.

### Peter Rogerson

Peter Rogerson, professor of geography at the State University of New York at Buffalo (UB), was named a AAAS Fellow for "distinguished contributions to the field of spatial science, particularly for spatial modeling of migration and for new methods of spatial analysis." A UB faculty member since 1986, Rogerson previously was on the faculty at Northwestern University. He served two stints as department chair – from 1991-94 and from 2007-10 – and has held an adjunct appointment in the Department of Biostatistics since 2003.



Rogerson

Rogerson's research interests are in the areas of demography and population change, epidemiology, spatial statistics and spatial analysis. His current work focuses on developing new methods to quickly detect newly emergent clusters in geographic data; for example, determining as quickly as possible whether there is a new cluster of crime or disease.

A prolific scholar, Rogerson is the author or co-author of five books and nearly 100 articles in refereed journals. His work has been supported by grants from

the National Science Foundation (NSF), the National Institutes of Health and the National Institute of Justice, among other funding sources. Rogerson has received numerous awards over the course of his career, including an NSF Presidential Young Investigator Award, a Guggenheim fellowship, a fellowship at the Center for Advanced Study in the Behavioral Sciences at Stanford University, and a Sustained Achievement Award from the University at Buffalo's Exceptional Scholars Program.

Rogerson earned a BA from Albany University, an MA from the University of Toronto and a PhD from UB.

### John Kelmelis

John Kelmelis, professor and founding faculty of the School of International Affairs at Penn State University, was elected a AAAS Fellow for "distinguished leadership of scientific research and applications programs in government and for creatively incorporating science into policy and policy education."

Kelmelis joined Penn State after 35 years of federal government service, most recently as Senior Counselor for Earth Science at the U.S. Department of State and Chief Scientist for Geography at the U.S. Geological Survey. He now teaches and conducts research into science, technology and international policy; hazards, disasters and international affairs; international environmental negotiations; and water and sustainable development. While in government he led numerous activities incorporating science into policy. These included directing the White House Scientific Assessment and Strategy Team to provide scientific information for the national response to the 1993 floods in the upper Mississippi River Basin; coordinating the U.S. Geological Survey's Global



Kelmelis

Change Research Program; and managing the United States Antarctic Mapping Program. Kelmelis led the Earth Science Findings with Foreign Policy Implications project for the U.S. Department of State. He is known for his expertise in geographic information research and applications; integrating biophysical and socio-economic sciences to address complex societal problems; and for his conceptual work in spatio-temporal analysis.

Kelmelis is an affiliate professor at Penn State's Dickinson Law School and holds a courtesy appointment in the Department of Geography, and is Scientist Emeritus at USGS. He received his BA in earth science from Central Connecticut State College; MS in engineering management from University of Missouri at Rolla; and Ph.D. in geography from Penn State University.

### Daniel A. Griffith

Daniel A. Griffith, Ashbel Smith Professor of Geospatial Information Sciences, University of Texas at Dallas, was elected as a AAAS Fellow for "distinguished contributions to spatial statistics and quantitative geography, particularly for his innovative scholarship in spatial autocorrelation, spatial filtering, and statistical errors."

An AAG member since 1969, Griffith is known for developing complex computational methods supporting proper statistical analysis in geography. His research appears in major geography and statistics journals. He also has developed pedagogic materials that make his highly technical field accessible to a broad audience.

Griffith's scholarly career has been marked by dedicated professional service and outreach. He has delivered hundreds of colloquia, lectures, and classes worldwide, including at the Timber-



Griffith

*Continued on page 6*

# Race, Ethnicity, and Place Conference

## Call for Participation

*Race, Ethnicity, and Place VI abstracts are due May 31*

The AAG is pleased to be a partner in the sixth biennial Race, Ethnicity, and Place Conference (REP VI), to be held October 24-26, 2012. The meeting will be hosted by the University of Puerto Rico, making it the first REP conference to be held outside the continental United States.

The 2012 conference theme is "Puerto Rico: Crossroads to Diversity." However, papers, panel sessions, and poster presentations focusing on any topics related to race and ethnic studies are welcomed.

Abstracts of 200 words or fewer must be submitted through the online abstract submission system (available at: [http://rep-conference.binghamton.edu/html/Call\\_for\\_Papers.htm](http://rep-conference.binghamton.edu/html/Call_for_Papers.htm)) no later than May 31, and presenters must pay the conference participation fee within 10 days of being notified of their abstract's acceptance by the Program Committee.

*AAAS Fellows continued from page 5*

gen and Max Plank Institutes, the Institute of Mathematics (Polish Academy of Sciences), Academia Sinica/Taiwan, the National Center for Geographic Information and Analysis, the Institut für Arbeitsmarkt-und Berufsforschung, and various universities, including Cambridge, Paris I (Sorbonne), Vienna, and Rome (la Sapienza).

Griffith's career began with an AAG Nystrom Award, followed by a Guggenheim Fellowship, a Leverhulme Trust Visiting Professorship, and being elected

Thursday's luncheon plenary session will feature a dialogue on diversity in higher education between Dr. Orlando Taylor, President of the Chicago School of Professional Psychology's Washington, DC, campus and Dr. Ana Guadalupe, Chancellor of the University of Puerto Rico-San Juan. Friday's luncheon plenary will be delivered by UPR Arts and Sciences Dean and Professor of Anthropology Jorge Duany, an expert on ethnicity and race in the Caribbean. The AAG will sponsor a panel session highlighting efforts to enhance



Taylor

diversity, promote inclusion, and broaden participation in geography.

In addition to paper, panel, and poster sessions, this year's conference will feature several special events that celebrate Puerto Rico's unique and diverse local culture, including a welcome by Central High School students and faculty who will display Puerto Rican art and dance and

a fellow of the Regional Science Association International and a founding fellow of the Spatial Econometrics Association. His many other honors include a Fulbright Research Fellowship, an American Statistical Association Research Fellowship, a Max Planck Institute visiting researcher, a Fulbright Senior Specialist, an elected fellow of the New York Academy of Sciences, and the Pennsylvania Geographical Society's Distinguished Geographer award. He also is the recipient of

a salsa band at the closing gala event. A number of exciting field trips to sites of cultural, historic, and biological significance will also be offered for an additional fee. The trips range from day trips, such as a visit to the El Yunque Rainforest, to a three-day excursion around the island that includes stops at a coffee plantation and "Bioluminescence Bay."

REP conferences typically draw an attendance of 250-350 students, faculty, and other professionals representing a wide range of disciplines and countries throughout the Americas, Europe, and Australia. For additional information about the REP conferences, including REP VI registration information, highlighted sessions, field trips, accommodations, and the call for papers and posters is available online at: <http://rep-conference.binghamton.edu>. The website and all conference materials will be available in both English and Spanish. ■

a Doctor of Science, honoris causa, degree from Indiana University of Pennsylvania. Griffith received his B.Sc. in mathematics and his M.A. in geography from Indiana University of Pennsylvania, his M.S. in statistics from the Pennsylvania State University, and his Ph.D. in geography from the University of Toronto. Griffith received AAG Distinguished Scholarship Honors in 2010. ■

### Receive Your AAG Journals Online Only

If you would prefer to receive your Journals, *The Professional Geographer* and *The Annals of the AAG*, online only, and not to receive paper copies of the Journals, you may do so by logging into your online member profile and editing your personal information. At the bottom of your profile page you may check boxes to opt out of receiving paper copies of the AAG journals. AAG members will still have online access to all articles.

Please direct questions to Adam Thocher at 202-234-1450 or [athocher@aag.org](mailto:athocher@aag.org).

# Washington Monitor

## House Bill Would Create Federal GIS Administration and Restrict Procurements

On March 21, Congressman Doug Lamborn (R-CO) introduced legislation containing troubling provisions that could restrict the procurement of GIS and mapping services to specific types of private "firms" and have a negative impact on the Federal Government's growing need to collect geospatial data.

The "Map it Once, Use it Many Times Act" (H.R. 4233) has language specifically "encouraging the acquisition of geospatial data, products, technology, and services from private geospatial firms," which it defines as "a private individual, firm, partnership, corporation, association, or other legal entity organized and permitted by law to engage in geospatial activities, that engages in such activities – (A) as a regular course of trade or business; and (B) with the principal objective of livelihood and profit." This usage of the term "firms" reflects language in the restrictive procurement policies of the Brooks Architect-Engineers Act of 1972 (40 U.S. Code §§ 1101-1104), which defines firms as licensed A&E entities, and has been used in the past to advocate for limiting GIS and mapping to only those eligible A&E firms. Also, the extreme private-sector focus of the bill could seemingly limit the ability of researchers, college and university consortia, and/or other public entities to engage in geography-related contracts from the federal government.

The legislation also would create a National Geospatial Technology Administration (NGTA) within USGS. This new entity would be headed by a presidentially-appointed official who would report directly to the Secretary of the Interior.

Under the bill, one of the primary missions of the NGTA would be to establish and maintain a National Geospatial Database for "all lands owned or managed by the United States, all Indian trust parcels, and, to the extent possible, all non-Federal lands in each State." The

text also would restrict the mapping and GIS needed for the Database largely to firms and specifies geospatial data which should be included in the Database, such as: cadastral information; information on transportation networks; hydrography; information on the geographic areas of governmental and administrative units; and other geospatial data determined to be useful in carrying out national priorities, including data related to economic development, management of the home mortgage system, smart energy grids, homeland security, emergency preparedness and response, the delivery of health-care services, and the maintenance of public works and other infrastructure systems. The database is to be made available to the public (likely through user fees) – except, of course, for the ubiquitous carve outs for national security purposes.

The NGTA would assume responsibility for a wide-range of Federal geospatial activities, including work currently carried out by USGS; other Department of the Interior agencies; the National Forest System (which is under the Department of Agriculture); and the National Oceanic and Atmospheric Administration (which reports to the Department of Commerce).

The legislation would also create a National Geospatial Policy Commission (NGPC), which would be charged with developing a National Geospatial Data Plan; overseeing coordination to avoid redundancy in the performance of geospatial activities; converting "geospatial activities to performance by private firms when possible"; and reducing "the costs to the Federal government of geospatial activities not eliminated or converted to performance by private geospatial firms."

The bill has been referred to four House Committees and two Subcommittees, but no hearings have been scheduled on the bill to this point. The legislation has no co-sponsors and does not yet have a companion in the Senate. My sense is that, given the lack of legislation that is

likely to be approved by Congress in a presidential-election year, the odds are quite low that H.R. 4233 will pass in 2012.

Nonetheless, given the concerns this legislation presents to geographers and the broader mapping and GIS communities, and its impacts on Federal agency procurement policies, we would encourage AAG members to review the full text of the bill and to share any concerns you may have about the legislation with your members of Congress. The text of the bill can be accessed at: <http://www.gpo.gov/fdsys/pkg/BILLS-112hr4233ih/pdf/BILLS-112hr4233ih.pdf>

## Census Bureau Reviewing American Community Survey

The Census Bureau is undertaking a program review of the American Community Survey (ACS) and is interested in receiving feedback from geographers and other ACS data users.

The Bureau is soliciting comments as to whether the ACS is effectively meeting the needs of data users. The overarching questions of the review are:

- Is the ACS communicating effectively with stakeholders, data users, and other key groups?
- Are ACS data products meeting the needs of users?
- Is the ACS using the best survey methods?
- Does the ACS have the best-possible research agenda?

The primary website for the review process is: [http://www.census.gov/acs/www/about\\_the\\_survey/acs\\_program\\_review/](http://www.census.gov/acs/www/about_the_survey/acs_program_review/) and questions about the review process and/or comments or submissions can be sent to: [acs.program.review@census.gov](mailto:acs.program.review@census.gov). ■

John Wertman  
jwertman@aag.org

## 2012

### MAY

- 15. Society of Woman Geographers (SWG) Pruitt National Minority Fellowship. [www.iswg.org](http://www.iswg.org).
- 15. Society for the History of Discoveries Essay Contest. [www.sochistdisc.org](http://www.sochistdisc.org).
- 31. GTU Scholarships. [www.gammathetaupsilon.org/scholarships.html](http://www.gammathetaupsilon.org/scholarships.html).

### JUNE

- 1. Ristow Prize in the History of Cartography. [www.washmap.org](http://www.washmap.org).
- 30. AAG Honors. [www.aag.org](http://www.aag.org).

### JULY

- 1. American Institute of Indian Studies Fellowships. [www.indiastudies.org](http://www.indiastudies.org).

**NSF Grants and Competitions**  
Information about NSF grants and awards is available at [www.nsf.gov](http://www.nsf.gov).

### AUGUST

- 22. NSF Research Experiences for Undergraduates Program. Full proposals. (June 1 for those requiring access to Antarctica.) [www.nsf.gov](http://www.nsf.gov).

### SEPTEMBER

- 2. AAG Garrison Award. [www.aag.org/grantsawards](http://www.aag.org/grantsawards).

### OCTOBER

- 15. NSF Geography & Spatial Sciences, Dissertation Research Improvement Grants. Full proposals. [www.nsf.gov](http://www.nsf.gov).

### NOVEMBER

- 20. Philanthropic Educational Organization (PEO) Sisterhood Scholar Awards. [www.peointernational.org](http://www.peointernational.org).

**AAG Grants and Competitions**  
The AAG offers numerous opportunities through its many grants and awards programs. See [www.aag.org/grantsawards](http://www.aag.org/grantsawards) for details.

## New Appointments

Eastern Michigan University, Assistant Professor, Nancy Villa Bryk. M.A. 1980, M.B.A. 2007, University of Michigan.

Eastern Michigan University, Assistant Professor, Todd Grote. PhD 2006, West Virginia University.

Eastern Michigan University, Assistant Professor, Heather Khan. PhD 2008, Florida State University.

Eastern Michigan University, Assistant Professor, Zachary Moore. PhD 2008, Texas State University.

University of Maryland College Park, Associate Professor, Paul Torrens. PhD 2004, University College London.

**Key:** *New institution, position, name. Degree, year degree granted, granting institution.*

### Submit New Appointments

If you have filled a position recently, please send the notice of your new hire to the AAG Newsletter for publication in the "New Appointments" section. Submissions should be made in the format listed above and sent by email to [newsletter@aag.org](mailto:newsletter@aag.org) with "New Appointments" in the subject line.

## AAG ADVANCING GEOGRAPHY FUNDS

I (we) pledge to contribute \_\_\_\_\_ to the Association of American Geographers as part of the Advancing Geography Campaign.

Giving levels include:

- |   |                   |
|---|-------------------|
| <input type="checkbox"/> \$500 to \$999       | Scholars Circle   |
| <input type="checkbox"/> \$1,000 to \$4,999   | Millennium Circle |
| <input type="checkbox"/> \$5,000 to \$9,999   | Century Circle    |
| <input type="checkbox"/> \$10,000 to \$24,999 | Explorers Circle  |
| <input type="checkbox"/> \$25,000 and above   | Leadership Circle |

This gift will be made as follows:

Total amount enclosed: \$ \_\_\_\_\_

Plus annual payments of: \$ \_\_\_\_\_

If you intend to fulfill your pledge through a gift other than cash, check, or marketable securities, please check:

- credit card       bequest       other

Credit Card:       Visa       MasterCard

Account Number \_\_\_\_\_

Name on Card \_\_\_\_\_

Expiration Date \_\_\_\_\_

Signature \_\_\_\_\_

- My (our) gift will be matched by my employer

I would like my gift to go toward:

- Endowment for Geography's Future  
 Developing Regions Membership Fund  
 AAG Student Travel Fund  
 AAG Geography & Human Rights Fund  
 AAG Unemployed and Underemployed Geographers Fund  
 Marble Fund for Geographic Science  
 AAG Public Policy Initiatives  
 Enhancing Diversity Fund  
 Area of Greatest Need  
 Other \_\_\_\_\_

Name \_\_\_\_\_

Address \_\_\_\_\_

Phone \_\_\_\_\_

Date \_\_\_\_\_

Please send this pledge form to:

AAG Advancing Geography Fund  
1710 Sixteenth St. NW, Washington, DC 20009



# Profiles of Professional Geographers

One of the major book publications stemming from the AAG's current EDGE-Phase 2 is *Practicing Geography: Careers for Enhancing Society and the Environment*. Edited by Michael Solem, Kenneth Foote and Janice Monk, *Practicing Geography* features contributions from a diverse group of authors from the private and public sectors offering perspectives on career opportunities for geographers in business, government, and nonprofit organizations. The book also explores opportunities in education, working internationally, freelancing and consulting, and offers perspectives on issues of particular interest to students (e.g., getting the most out of internships) and current professionals (e.g., networking and balancing work and home life). Many chapters feature profiles highlighting the work of professional geographers, such as the profile of Marsha Henderson below. *Practicing Geography* has recently been published by Pearson Prentice Hall.

## Marsha Henderson

Vice President for External Affairs  
State University of New York at Buffalo

When Marsha Henderson joined the search committee for Vice President for External Affairs at the University at Buffalo (UB), she never expected that she'd become a candidate herself. However, late in the search process, Marsha realized that the job would provide an ideal opportunity to bring together her executive experience and her passion for serving her local community and alma mater. She assumed the newly created position in 2005 after a 34-year career in the banking industry, where she most recently served as President of the Western New York District for Key Bank.

While educational administration might seem to be worlds apart from corporate America, Marsha notes that her time in banking saw major changes to the industry that in many ways mirrored the campus reorganizations taking place at UB when she assumed her post. As VP for External Affairs, she is responsible for coordinating outreach activities with all of the external communities the institution serves, maintaining governmental relations, and leading philanthropic, communications, and public relations initiatives. The large network of business and community contacts she developed as a banking professional and active volunteer support the university's efforts to build strategic partnerships with industry, alumni, government, and civic leaders.

As an undergraduate geography major at UB, Marsha intended to pursue a master's degree in urban planning. She began working in a bank to save money for her graduate studies and ended up liking the industry and corporate environment. Advancement in her newly chosen field required specialized training, so she completed an MBA in Finance at Canisius College. Nevertheless, Marsha has drawn on her geography background in both her corporate and higher education careers.

"Geography gave me a framework for analyzing data, questioning assumptions, and understanding the interplay of various forces on the results," she explains. She also observes figurative connections between geography and the business world: "I often think about a course I took in political geography that focused on how the 'lay of the land' influenced history and politics. In leading an organization and advocating for change, a leader needs to be cognizant of the 'lay of the land' – why things are the way they are and how to approach change."

Despite the difficulties facing higher education, particularly given recent reductions in funding, Marsha finds her work to be "a challenge, but a worthwhile

one." She adds that, "The opportunity to work at a research university where new knowledge and discoveries occur is exciting, along with the fulfillment of seeing young students grow in their lives and career directions." She points out that higher education continues to be a

growth industry because of the advanced skills and education demanded by today's transforming economy. Because many applicants have the academic credentials for these jobs, she stresses that the ability to work collaboratively, listen well, and understand varying points of view are essential qualifications.

"The difference a candidate needs to bring is in the less-defined qualities of personal presence and real interest in the mission of the organization." For Marsha, it is these "intangible qualities" that "take someone from being good to great." ■

– Joy Adams, AAG

For more information on *Practicing Geography*, see page 21. To order your copy, visit [www.pearsonhighered.com](http://www.pearsonhighered.com).



Henderson

More profiles of professional geographers are available at [www.aag.org/careerprofiles](http://www.aag.org/careerprofiles).

# AAG Specialty and Affinity Groups Present Annual Awards

AAG specialty and affinity groups are voluntary associations of AAG members. Each year, many of these groups confer awards on both faculty and students in conjunction with the AAG Annual Meeting. Recipients of this year's awards are listed below. Photographs are provided for many of those who were present at the AAG's annual awards luncheon, which was held on February 28, 2012, in New York.

## Africa Specialty Group

### Student Paper Competition 2012

Timothy Baird, University of North Carolina at Chapel Hill, "Conservation, Disturbance, and Livelihood Diversification in Northern Tanzania"

### Student Paper Competition 2012

John Reid-Hresko, University of Colorado, Boulder, "Our Bodies Are Our Own: Resistance to ABC-Based HIV/AIDS Interventions in Northern Tanzanian Conservation Settings"

### The Kwadwo Konadu-Agyemang Distinguished Scholar Award in African Geography

Florence Margai, Assistant Dean, the Graduate School, SUNY Binghamton



Margai

## Animal Geography Specialty Group

### Student Paper Competition

Mary Ann Denzer (University of Missouri – Kansas City), "What is an Animal? Mapping Animal Law in the United States"

## Applied Geography Specialty Group

James R. Anderson  
Medal of Honor in Applied Geography  
Lee R. Schwartz,  
Director, Office of the Geographer and Global Issues, U.S. Department of State



Schwartz

## Asian Geography Specialty Group

### Asian Geography Specialty Group Distinguished Service Award

Saraswati Raju, Jawaharlal Nehru University, India

### Asian Geography Specialty Group Distinguished Service Award

James Tyner, Kent State University

## Climate Specialty Group

### John Russell Mather Paper of the Year Award

Asher B. Siebert, Department of Geography, Rutgers, the State University of New Jersey, "Future Occurrence of Threshold-Crossing Seasonal Rainfall Totals: Methodology and Application to Sites in Africa"

## Cultural Geography SG

### Denis E. Cosgrove PhD Student Research Grant

Scott Warren, Arizona State University

### Terry G. Jordan-Bychkov PhD Student Paper Award

J.J. Zhang, Durham University

### Masters Level Student Paper Award

Matthew Cook, University of Tennessee at Knoxville

### Masters Level Student Research Grant

Yang Yang, London School of Economics and Political Science

## Cultural and Political Ecology

### James M. Blaut Innovative Publication Award

Julie Guthman, University of California Santa Cruz, "Weighing in: Food, Justice, and the Limits of Capitalism" (Book) University of California Press, 2011

## Field Award

Kayla Yurco, Graduate Student, Penn State University, "Of Women and Cows: Transitioning Notions of Gender and Development for Pastoralists in Central Kenya's Conservation Areas"

## Ethnic Geography Specialty Group

The Ethnic Geography Specialty Group would like to congratulate Wei Li (Arizona State University) for receiving this year's "Distinguished Scholar" award for her contributions to Ethnic Geography.

The EGSG is pleased to announce that Alexandra Giancarlo (Louisiana State University) won this year's Student Paper Competition with her paper "Resilience and Recovery in New Orleans' Lower Ninth Ward". Honorable mentions went to Wan Yu (Arizona State University) and Murat Es (University of North Carolina Chapel Hill).

## European Specialty Group

### Best Paper (graduate)

Melissa Kelly, Department of Social and Economic Geography, Uppsala University, "In Search of Belonging and Success: Swedish-Iranian Youth in London"

## Geographic Information Science and Systems

### GIS Student Paper Honors Competition – First Place

Jing Gao, University of Wisconsin, Madison, "Decomposition of errors in data-driven land cover change modeling and the bias/variance dilemma"



Gao

Continued on page 11

Specialty Group Awards continued from page 10

## GIS Student Paper Honors Competition – Second Place

Çaglar Koylu, University of South Carolina, Department of Geography, "Smoothing Locational Measures in Spatial Interaction Networks"

## Geographic Perspectives on Women SG

### Susan Hanson Dissertation Proposal Award

Nazgol Bagheri, University of Missouri, Kansas City, "Modernizing the Public Space: Gendered Space and Multiple Modernities in Twentieth Century Tehran"



Bagheri

### Jan Monk Service Award

Kath Browne, University of Brighton



Browne

## Geography Education Specialty Group

### Gail Hobbs Award

Jung Eun Hong, Graduate Student, Penn State University, "Developing web-based GIS training tutorials of the teachers, by the teachers, for the teachers"



Jung Eun Hong (right) receives the Gail Hobbs Award from AAG President Audrey Kobayashi.

## Human Dimensions for Global Change Specialty Group

### Student Research Competition

Kelly Turner, Arizona State University, "An Integrative analysis of master planned developments as a vehicle for sustainable urbanism"



Turner

## Political Geography Specialty Group

### Julian Minghi Outstanding Research Award 2012

Carl Dabman, Department of Geography, Miami University of Ohio, "Bosnia Remade" (Oxford University Press, 2011)



Dabman

### Julian Minghi Outstanding Research Award 2012

Gerard Toal, Government and International Affairs Program, Virginia Tech, "Bosnia Remade" (Oxford University Press, 2011)



Toal

### Stanley D. Brunr Young Scholar Award 2012

Alex Jeffrey, School of Geography, Politics and Sociology, Newcastle University



Jeffrey

## Geography of Religions and Belief Systems SG

### The David E. Sopher Young Scholar Award

Murat Es, University of North Carolina at Chapel Hill, "Western Mosques between Universalism and Particularism"



Es

## Remote Sensing, GIS, and Cartography Specialty Groups

### Student Illustrated Paper Competition

1st Place (\$500): Andrew Shatz, Clark University, "Creating and Analyzing a Time Series of Species Distribution Models: Asian Longhorned Beetle (*Anoplophora glabripennis*) in Worcester County, MA"

2nd Place (\$250): Marion Clement & Kae Yamane, Rutgers University, "The Shantytown Mapping Project: Google Earth in the Study of Urban Shantytowns"



Clement

3rd Place (\$150): Shanshan Cai, Department of Geography, Ohio State University, "Combing Object-based Classification Approach with Pixel-based Contextual Classification on Airborne High Spatial Resolution Remote Sensing Imagery"



Cai

## Remote Sensing Specialty Group

### Student Paper Honors Competition

1st Place (\$500): Amy E. Frazier, State University of New York at Buffalo, "Super-Resolution Land Cover Mapping using Landscape Metrics"



Frazier

2nd Place (\$250): Iryna Dronova, University of California at Berkeley, "Landscape analysis of wetland plant functional types: the effects of image segmentation scale, vegetation classes and classification methods"



Dronova

Continued on page 12

Specialty Group Awards continued from page 11

3rd Place (\$150): Amy L. McCleary, University of North Carolina at Chapel Hill, "A Comparison of Support Vector Machine and Object Based Image Analysis Approaches for Mapping Land Use/Cover: A Case Study of the Galápagos Islands"

### Best Paper Award for Early Career Scholars in Remote Sensing

Caiyun Zhang, Florida Atlantic University, "Mapping Individual Tree Species in an Urban Forest using Airborne LiDAR Data and Hyperspectral Imagery" (\$250 award)

### Sexuality and Space Specialty Group

#### Paper Competition

1st Place: William Payne, York University, "Death-squads contemplating queers as citizens: What Colombian paramilitaries are saying"

2nd Place: Qianhui Tan, National University of Singapore, "Liminal and libidinal in the nightclub: unpacking the paradoxical performances of sexualized feminine bodies"

### Spatial Analysis and Modeling Specialty Group

#### SAM Student Paper Competition

Elizabeth Delmelle, University of North Carolina at Charlotte, "The Reciprocal Relationship of Neighborhood Quality of Life Dynamics: A Structural Equation Modeling Approach"



Delmelle

#### SAM Student Paper Competition

Kangping Si, Clark University, "A New Method for Multiple-Threshold Map Comparison and Accuracy Assessment"



Si

#### SAM Student Paper Competition

Ran Wei, Arizona State University, "Spatial Uncertainty in Harvest Scheduling"



Wei

### Transportation Geography Specialty Group

#### Master's Student Paper Award

Monir Moniruzzaman, McMaster University, "Accessibility and built environment effects on transit use"



Moniruzzaman

#### Edward L. Ullman Award

Jean-Claude Thill, University of North Carolina-Charlotte



Thill

### Urban Geography Specialty Group

#### Urban Geography Dissertation Paper Competition Award

Daniel Novik Warshawsky, University of Southern California, "FoodBank Johannesburg, State, and Civil Society Organizations in Post-Apartheid Johannesburg"



Warshawsky

### Water Resources Specialty Group

#### Distinguished Career Award

Dr. William L. Graf (Foundation University Professor Emeritus at the University of South Carolina and Senior River Scientist at The Nature Conservancy)



Graf

The WRSG also presented the following awards at the 2012 AAG Annual Meeting: Doctoral Research Proposal Award to Sarah Praskievicz (University of Oregon); Master's Paper Award to Chloe Delhomme (University of South Florida), and an undergraduate illustrated paper award to Corinna Keeler (Grinnell College), respectively.

## Internships at AAG

The AAG seeks interns on a year-round basis for the spring, summer, and fall semesters. Interns participate in most AAG programs and projects such as education, outreach, research, website, publications, or the Annual Meeting. The AAG also arranges for interns to accompany different AAG staff on visits to related

organizations or events of interest during the course of their internship. A monthly stipend of \$500 is provided and interns are expected to make their own housing and related logistical arrangements. Enrollment in a Geography or closely related program is preferred but not a prerequisite for these opportunities.

### Apply

Applicants should forward a resume, brief writing sample, and three references to Candida Mannozi, [cmannozi@aag.org](mailto:cmannozi@aag.org). More information on internships at the AAG is available in the "Jobs & Careers" section of the AAG website at [www.aag.org](http://www.aag.org). ■

# AAG Awards at Annual Meeting

The AAG supports its membership through the presentation of numerous grants and awards. Please see [www.aag.org/grantsawards](http://www.aag.org/grantsawards) for a full list, including eligibility requirements, nomination procedures and deadlines. Recipients of previously unannounced 2012 AAG awards, presented at the Annual Meeting in New York, are listed below. Congratulations to all of the recipients.

## AAG Video Competition (inaugural)

First Place – Kieran O'Mahony, University of Washington, "Geography Matters Today More Than Ever" (viewable at [www.aag.org/videocompetition](http://www.aag.org/videocompetition))



O'Mahony

## AAG International Geographic Information Fund Awards

Qiusheng Wu, University of Cincinnati

Nazgol Bagheri, University of Missouri–Kansas City

Kunwar Singh, University of North Carolina at Charlotte

Kate Sherman, Oregon State University

Susan Meerdink, University of Northern Iowa

## AAG Community College Awards

### AAG Darrel Hess Community College Geography Scholarships

Jesse Sandoval, Mesa Community College to Arizona State University

Matthew Conway, Foothill College to University of California, Santa Barbara

Rose Ramirez, Saddleback College to the University of California

### AAG Community College Travel Grants

Jimena Cuenca, Pasadena City College

### E. Willard and Ruby S. Miller Award

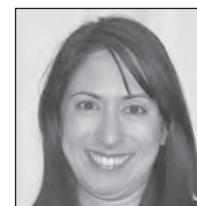
Jane Southworth, University of Florida



Southworth

### Glenda Laws Award

Minelle Mahtani, University of Toronto



Mahtani

### Meredith F. Burrill Award

Lary Dilsaver, University of South Alabama



Dilsaver

### J. Warren Nystrom Dissertation Award

Daehyun Kim, University of Kentucky, "Fluvial-Geomorphic Processes of Salt Marsh Creeks Shape Spatial Trends in Vegetation by Complicating Environmental Stress Gradients"



Kobayashi presents awards to (L to R) Bagheri, Sherman, Wu, and Singh.

## AAG Grants and Competitions

The AAG offers numerous opportunities through its many grants and awards programs. See [www.aag.org/grantsawards](http://www.aag.org/grantsawards) for details.

## Nominations Invited for AAG Honors

The AAG Honors Committee invites nominations for AAG Honors to be conferred in 2013. AAG Honors are awarded in recognition of outstanding contributions to the advancement or welfare of the profession in six categories: Lifetime Achievement Honors, Distinguished Scholarship Honors, Distinguished Teaching Honors, Ronald F. Abler Distinguished Service Honors, Gilbert Grosvenor Honors for Geography Education, and Gilbert F. White Distinguished Public Service Honors.

Normally no more than one award will be made in each category of AAG Honors. No more than six individuals may be recommended for AAG Honors in a single year. Nominees must be AAG members if they are residents of the United States; if they reside elsewhere the membership requirement is waived. In some cases professionals from other disciplines or professions are eligible for consideration. Geographers or other professionals previously honored may be nominated again for distinction achieved since their first awards.

The deadline for nominations is **June 30, 2012**. See the handbook section of a recent issue of the *AAG Guide to Geography Programs in the Americas* for a complete list of past honors award recipients or consult the AAG website at [www.aag.org/honors](http://www.aag.org/honors).

**Apply:** Please submit a nominating letter and the candidate's CV to [grantsawards@aag.org](mailto:grantsawards@aag.org). Digital submissions are preferred. Alternatively, hard copies may be faxed (202-234-2744) or mailed to: AAG Honors, Association of American Geographers, 1710 Sixteenth Street NW, Washington, DC 20009-3198.

# AAG Welcomes Visiting Researcher Jiangfan Fu

Chinese geographer Jiangfan Fu joined the AAG staff as visiting researcher in March.

Jiangfan received her bachelor's degree in Resource, Environment and Town-Country Planning and Management, with a second degree in Economics, from Peking University. She continued her studies as a master's candidate at Peking University, focusing on Economic Geography and Industrial Planning. During her graduate studies, Jiangfan published three articles on manufacturing in China, examining geographic agglomeration, the spatial utilization of industrial zones in the global cities, and energy intensity in China. She has also participated in a number of research and planning projects in Chinese cities.

Based in Washington, DC at the AAG's Meridian Place offices, Jiangfan is working with AAG senior staff on many key projects, including the AAG Developing Regions Program, "My Community, Our Earth" (MyCOE), and numerous educational initiatives. She has been assisting with cooperation between American and Chinese geographers following the recent signing of a Memorandum of Understanding between the AAG and the Chinese Geographical Society at the 2012 AAG Annual Meeting.

Jiangfan will return to China at the end of May,

and plans to graduate with a master's degree from Peking University in June 2013. Her graduation thesis will focus on electronics manufacturing plants by region in China. The electronics manufacturing industry is not only a major source of employment and exports in China but also spatially dispersed. Jiangfan will assess the relative contribution of plants' self-selection and agglomeration economies to a region's productivity level. ■



Jiangfan Fu

## Call for Nominations:

### AAG Honors and Nominating Committees

The AAG Council seeks nominations for candidates to serve on the AAG Honors Committee and the AAG Nominating Committee. The Council will prepare the final slate of candidates for both committees from the nominations received, and committee members will be elected by a vote of the AAG membership.

Nominations for the Honors Committee may include persons (i) from the membership at large and (ii) from those members who have previously received AAG Honors

(a list of previous honorees can be found in the *AAG Guide to Geography Programs in the Americas* and online at [www.aag.org/grant-sawards](http://www.aag.org/grant-sawards)). Honors Committee members serve for two years and are responsible for making recommendations of awardees for various AAG Honors for Council consideration. Nominating Committee members serve for one year. The committee recommends to the Council the slate of candidates for the AAG Vice President, President, and National Councillor elections.

If you wish to nominate yourself or other qualified individuals for service on these committees, please contact AAG Secretary Jenny Zorn by **June 30, 2012**. Nominations should include the contact information of the nominee, a brief biosketch, and indication that the nominee is willing to be placed on the slate of candidates for election by the AAG membership.

Please send nominations by email to AAG Secretary Jenny Zorn at [jzorn@csusb.edu](mailto:jzorn@csusb.edu).

### MOVING? HAVE YOU RECENTLY MOVED?

To update your address or contact info, visit the AAG website ([www.aag.org](http://www.aag.org)) or fax this entire page to 202-234-2744 or mail to the AAG Office.

Name \_\_\_\_\_

Affiliation \_\_\_\_\_

Address \_\_\_\_\_

\_\_\_\_\_  Home  Office

City \_\_\_\_\_ State \_\_\_\_\_ Zip \_\_\_\_\_

Telephone \_\_\_\_\_ Fax \_\_\_\_\_ Email \_\_\_\_\_

# Jobs in Geography

## UNITED STATES

### \*CALIFORNIA, HUMBOLDT

Vacancy Announcement, **Temporary Faculty Position in Environmental Science and Management**. Starting August 2012. JOB #7519. Description: Humboldt State University's Environmental Science and Management Department invites applications for an academic year full-time temporary faculty position in Geospatial Science. Initial appointment will be for the Fall 2012 semester. Subsequent reappointment for Spring 2013 will be contingent upon programmatic need and satisfactory performance evaluation.

Professional Qualifications: A Ph.D. or equivalent from an accredited college or university in Natural Resources, Forestry, Geography, or a closely related field is preferred at the time of appointment. Candidates with considerable progress towards degree completion by appointment date will be considered. The

candidate should have demonstrated expertise in geospatial analysis.

The successful candidate must demonstrate the following:

- Potential for effective teaching or teaching experience using a variety of methodologies;
- Ability and interest in teaching a broad range of geospatial courses;
- Ability and interest in preparing students to function in a culturally and ethnically diverse society.

The successful candidate, if not a U.S. citizen, must have authorization from the Bureau of Citizenship and Immigration Services to work in the United States. Evidence of degree(s) is required at time of hire. For more information and to view complete vacancy announcement, please visit <http://apptrk.com/238508>.

Humboldt State University is an EO/TitleIX/ADA Employer.

MAY 12-89

### \*IDAHO, POCATELLO

**Visiting Assistant Professor, Digital History**. The Department of History at Idaho State University seeks a visiting assistant professor in digital history to begin in August 2012. The field of specialization is open, though preference is towards candidates who will reinforce department strengths in historical GIS. A Ph.D. in history, geography, or related field is required at appointment. Successful candidates will demonstrate a growing record of scholarship and commitment to teaching, including distance-learning and high-quality online courses. Specific teaching duties include courses in world regional geography and cartography and training graduate students in historical GIS or other digital tools of historical research and education.

Apply: Submit letter of application, C.V., and three references online at <https://isujobs.net>. Review of applications begins April 23. Position open until filled.

ISU is a research university with over 15,000 students enrolled in programs ranging from undergraduate to doctoral. History faculty exemplifies high-quality teaching and innovative, productive research in collaboration with other disciplines. The university is located in Pocatello, tucked against the mountains in a setting valued for its scenic attractions and recreational opportunities.

Kevin Marsh, Chair, Department of History, Idaho State University, 921 S 8th Ave, Stop 8079, Pocatello, ID 83209-8079. <http://isu.edu/history>. Email: [marskevi@isu.edu](mailto:marskevi@isu.edu). Fax: 208-282-4267.

MAY 12-99

### \*MASSACHUSETTS, WORCESTER

**GIS Programmer**. Clark Labs of Clark University is seeking a GIS Programmer for their small dynamic programming team for software development and system level programming for the Clark Labs' suite of software products including the IDRISI GIS and Image Processing software. Candidates must possess expertise in Delphi and C++, the Windows API, GDI and COM. Expertise in the IDRISI software and GIS in general is essential. Competency with .NET, OpenGL, Java and Access/DAO/SQL highly desirable. Must be able to work independently yet closely interact with other members of the

"Jobs in Geography" lists positions available with US institutions who are Equal Opportunity Employers seeking applications from men and women from all racial, religious, and national origin groups, and occasional positions with foreign institutions.

Rates: Minimum charge of \$150. Listings will be charged at \$1.25 per word. Announcements run for two consecutive issues unless a stated deadline permits only one listing. The charge for running an announcement more than twice is one-third the original charge for each subsequent listing. We will bill institutions listing jobs after their announcements appear in JIG for the first time.

Deadline: JIG announcements must reach the AAG *before the first of the month* to appear in JIG for the following month (eg: January 1 for February issue). Readers will receive their Newsletter copies between the 5th and the 15th of the month. Schedule job closing dates with these delivery dates in mind.

Format: Announcements should be sent as an attachment or in the body of an e-mail to [jig@aag.org](mailto:jig@aag.org). The announcements must be saved in Microsoft Word 5.0 or greater, or Corel WordPerfect 6 or greater. No job announcements accepted by phone or fax. Follow format and sequence of current JIG listings. All positions are full-time and permanent unless otherwise indicated. State explicitly if positions are not firm. Employers are responsible for the accuracy and completeness of their listings. JIG will not publish listings that are misleading or inconsistent with Association policy. Employers should notify the Editor to cancel a listing if the position is filled. The Editor reserves the right to edit announcements to conform with established format.

Display ads are also available. Ads will be charged according to size: 1/6 page (2 1/4" x 5") \$400; 1/3 page vertical (2 1/4" x 10") \$650; 1/3 page square (4 3/4" x 4 3/4") \$650; 1/2 page horizontal (7" x 5") \$750; 2/3 page horizontal (7" x 8") \$900; Full page (7" x 10") \$1,100. Display ads run for one month only. Please submit the text of your display ad as a separate document, if you would like to appear in the online version of the JIG.

Affirmative Action Notice: The AAG Affirmative Action Committee requires job listers to send to the JIG Editor the name, academic degree, sex, and rank of each person appointed as a result of an announcement in JIG.

Geographer Available. A service for AAG members only. Send personal listings of 50 words or less, following the format of current listings. Listings run for two consecutive issues. Enclose \$25 with listing. A blind listing service is available - the editor will assign a box number and forward inquiries to the member listed.

\* Indicates a new listing

programming team and outside organizations. Bachelor's degree required in Geography or related field; master's degree preferred with 3-5 years of experience. This is a full time administrative position with excellent benefits including employee and family tuition; health and other insurances, generous retirement plan, 4 weeks vacation, free use of campus fitness/athletic center, and many more. Starting salary expected to be in range of 45K – 60K depending on experience.

Apply: Please e-mail cover letter and resume to: [resumes@clarku.edu](mailto:resumes@clarku.edu). Clark University, Human Resources, 950 Main Street, Worcester, MA 01610.

AA/EOE. Clark values diversity.  
MAY 12-95

#### \*MICHIGAN, ANN ARBOR

ICPSR seeks an **Associate Director – Research Professor or Research Associate Professor**.

The Inter-university Consortium for Political and Social Research (ICPSR) at the University of Michigan provides social science data to researchers and policymakers around the world. An international organization with over 700 member institutions, ICPSR offers access to data for research and instruction, training in methods of quantitative analysis, and a data preservation service to ensure long-term availability.

As leader of ICPSR's Collection Development Unit, the ideal candidate will supervise and guide project directors managing archival activities for federal and private sponsors. He/she will also consult with data producers and data users about the needs of the research community, and use that information to develop new archival collections and write proposals for external funding to support those collections. The individual selected for this position will hold a research faculty appointment in ICPSR and the Institute of Social Research.

For a complete description please visit [http://umjobs.org/job\\_detail/67165/associate\\_director\\_icpsr](http://umjobs.org/job_detail/67165/associate_director_icpsr).

The University of Michigan is an equal opportunity/affirmative action employer.

MAY 12-85

#### \*MISSOURI, SPRINGFIELD

Missouri State University. The Department of Geography, Geology and Planning anticipates an opening for a 9-month, non-tenure-track **Visiting Assistant Professor of Geography** to begin in August 2012. Ph.D. (or ABD) in Geography or closely related field at the

time of appointment. Expertise and evidence of teaching effectiveness in the area of **Geospatial Science** required; commitment to and ongoing involvement in Geospatial Science research preferred. Teaching responsibilities will include upper-division undergraduate courses in Geographic Information Science (GIS), Interpretation of Aerial Photography, Remote Sensing, and Digital Image Processing.

Apply: Applicants should submit a letter of application and current CV and arrange for three reference letters and copies of all academic transcripts to be submitted to Chair, Geospatial Science Search Committee, Department of Geography, Geology and Planning, Missouri State University, 901 South National, Springfield, MO 65897.

The evaluation of applications will begin May 7 and will continue until a successful candidate is found. Further information about our department and programs can be obtained from our web site at [geosciences.missouristate.edu](http://geosciences.missouristate.edu), or call (417) 836-5800 – Email [GGP@missouristate.edu](mailto:GGP@missouristate.edu).

Women and minority candidates are encouraged to apply. Employment will require a criminal background check at University expense. EO/AA employer.

MAY 12-103

#### \*NEW YORK, ONEONTA

The Department of Earth and Atmospheric Sciences at SUNY Oneonta invites applications for a non-tenure track position as a **Historically Underrepresented Dissertation Fellow (Visiting Assistant Professor)** beginning in August 2012. This is a temporary, two-year appointment.

SUNY Oneonta is a comprehensive, public, liberal arts and sciences college with 6,000 students and 500 faculty. The College is ranked ninth among the best regional universities by *U.S. News and World Report*. The College offers over 60 undergraduate majors and nine graduate programs. The student to faculty ratio is approximately 17:1. The nine-member Earth Sciences Department is multi-disciplinary with undergraduate programs in geology, water resources, earth science, earth science education, environmental earth science, and meteorology. There is also a small master's degree program. The department has a strong history of excellence in teaching, faculty-student mentoring, and continued contact with alumni. The department strongly encourages its faculty to conduct/supervise research projects that involve undergraduates. To learn more about the College or the Department please visit [www.oneonta.edu](http://www.oneonta.edu) or [demics/earths. For a complete description of this position go to: \[www.oneonta.edu/employment\]\(http://www.oneonta.edu/employment\).](http://www.oneonta.edu/aca-</a></p>
</div>
<div data-bbox=)

To apply online go to: <https://www.interviewexchange.com/jobofferdetails.jsp?JOBID=30816> Upload cover letter that specifically addresses historical underrepresentation and ability to complete your degree requirements in addition to teaching duties within the two year time frame (two page max), curriculum vitae, statements of teaching philosophy (two page max) and research interests (two page max), and scanned copies of graduate transcripts (official transcripts required at time of appointment). Please have three professional references send or e-mail letters to: Dr. Martha L. Growdon, Chair, Search Committee, Earth Sciences Department, SUNY Oneonta, Oneonta, NY 13820-4015, [martha.growdon@oneonta.edu](mailto:martha.growdon@oneonta.edu).

Applications will be accepted until the position is filled. Review of applications will begin immediately. For other employment and regional opportunities, please visit our website at: [www.oneonta.edu/employment](http://www.oneonta.edu/employment).

SUNY Oneonta values a diverse college community. Please visit our website on diversity at: [www.oneonta.edu/admin/oei](http://www.oneonta.edu/admin/oei). Moreover, the College is an EEO/AA/ADA employer. Women, persons of color, and persons with disabilities are encouraged to apply.

MAY 12-90

#### \*OHIO, COLUMBUS

The Mershon Center for International Security Studies invites applications for the endowed position of the **Wayne Woodrow Hayes Chair in National Security Studies**. The Chair will be appointed at the Mershon Center and another tenure unit at The Ohio State University. He/she will be expected to lead an active interdisciplinary program dedicated to teaching and research on national security issues. The mission of the Mershon Center for International Security Studies is to advance the understanding of national security in a global context. The center does this by fostering research on the use of force and diplomacy; the ideas, identities, and decisional processes that affect security; and the institutions that manage violent conflict.

Successful candidates for the Chair will be established scholars with international recognition and a distinguished record of publication and teaching related to issues of national security. Applicants may come from a variety of backgrounds and disciplines, including geography, history, law, political science, philosophy, public policy, public affairs/administration, sociology, and



other areas of national security expertise. The Chair will be appointed jointly in the Center and as a tenured professor in another academic unit and will have a significant reduction in teaching duties.

Applicants should submit a letter of interest, current curriculum vitae or resume, and the names of three references to: Wayne Woodrow Hayes Chair Search Committee, Mershon Center for International Security Studies, 1501 Neil Ave., Columbus, OH 43201. Electronic applications may be sent to [Mershon.HayesChair@oia.osu.edu](mailto:Mershon.HayesChair@oia.osu.edu).

For additional information about the Mershon Center, please visit: [mershoncenter.osu.edu](http://mershoncenter.osu.edu). Questions or nominations may be addressed to Mershon Center Director Craig Jenkins at [jenkins.12@osu.edu](mailto:jenkins.12@osu.edu).

The Ohio State University is an Equal Opportunity/Affirmative Action employer. Women, minorities, veterans, and people with disabilities are encouraged to apply.

MAY 12-102

## \*OREGON, CORVALLIS

**Leader, Geospatial Intelligence and Planning Initiative Associate/Full Professor.** Oregon State University College of Earth Ocean and Atmospheric Sciences invites applications for a full-time 9-month (1.0 FTE) or full-time 12-month (0.75 FTE) tenure-track position to serve as Leader of the new Oregon State University Geospatial Intelligence and Planning Initiative, to begin September 2012.

We seek a scholar and leader who will guide the design and development of this innovative and transdisciplinary Initiative. The successful candidate's research will contribute to at least one of the Initiative's focal areas (geohazards, energy and natural resources security, public health, and data intensive geospatial science & technology). The candidate will be able to teach one or more classes one of the Institute's focal areas. The Initiative Leader will also be responsible for establishing relationships with governmental agencies (including agencies in the intelligence community), non-governmental organizations, and commercial members relevant to the four focal areas of the Initiative. The Initiative Leader will guide the hiring and coordinate the activities of at least six new full-time tenure-track faculty positions. The Initiative Leader will also be expected to work with the OSU Foundation to engage potential donors to obtain and sustain funding for Initiative facilities.

A PhD (at time of application) is required in a field that supports geospatial intelligence and

planning. Candidates must have a demonstrated ability to initiate and publish research, to obtain funding from competitive sources, to teach effectively at the undergraduate and graduate level, and to collaborate in interdisciplinary groups. A minimum of two years of professional experience is preferred. The successful applicant must show a commitment to advancing the participation of diverse groups and supporting diverse perspectives. Salary will be competitive.

To review posting and apply, go to <http://oregonstate.edu/jobs> posting #0008750. For full consideration, apply by May 31, 2012.

OSU is an AA/EEOE and is responsive to dual-career needs.

MAY 12-100

## \*PENNSYLVANIA, TOWANDA

Hanover Engineering Assoc. Inc. is looking for qualified **GIS Technicians** familiar with the ESRI product suite as well as Trimble GPS equipment, Terrasync and Pathfinder Office software. The candidate should be self-motivated and have experience in digitizing, projections, georectification and cartographic design. Additional training in ModelBuilder, ArcPy, AutoCAD and Microsoft Access is preferred, but not essential. A 4-year degree and a minimum of 1 year experience are required.

Apply: Anyone interested in applying please forward a resume to Kristin Chaapel @ [kchaapel@hanovereng.com](mailto:kchaapel@hanovereng.com) or mail to: Hanover Engineering Associates, Inc. 1 Elizabeth Street, Suite 11, Towanda, PA 18848.

MAY 12-88

## \*WISCONSIN, MILWAUKEE

**UWM Libraries – Assistant Director, Curator of the AGSL.** The American Geographical Society Library (The AGSL), America's oldest, largest and most distinguished geographical research library, was established in New York City in 1851, and remained there until its transfer to Milwaukee in 1978. The Library's breadth, size (well over one million items) and historical perspective attract both local and visiting scholars from a wide array of disciplines. The AGSL includes important collections of maps, atlases, books and periodicals, photographic images, as well as large collections of globes, pamphlets, and digital datasets. Since 1996, it has been the home of the Archives of the Association of American Geographers, North America's foremost organization of professional geographers, and since 2011, the repository of the historic archives of the AGS. The AGSL

is the largest library of its type in a university setting in North America. It sponsors several lecture series, is home to the Map Society of Wisconsin and supports two research fellowship programs that have, in the past decade, brought many scholars from across the globe.

The Society, which remains in New York City, was central to the development of American geography, played a major role in world exploration and mapping, and served the U.S. Government in times both of war and peace, for well over a century.

We seek an experienced, creative, and entrepreneurial leader to serve as our new Curator whose experience and professional contributions to the field demonstrate ability to shape and guide the AGSL, a nationally leading library, and expand its recognition worldwide. Under the direction of the University Libraries Director, this individual plays a key role in determining the direction of the AGSL and seeking resources in support of its research and educational services. The Curator directs the day-to-day activities of the AGSL, leads an experienced staff, and works closely with colleagues throughout the Libraries and university as a whole.

The Curator is responsible for the senior management and administration of all AGSL operations, including ongoing grant-funded projects. This includes formulation of goals and policies, budget preparation, collection management, preservation and conservation, teaching and lecturing, grant writing, outreach program development (including lecture series, fellowships, exhibits, publications and user services), and liaison work with UWM Schools and Colleges, the American Geographical Society of New York and the Association of American Geographers. The Curator is engaged in numerous digital initiatives designed to provide access to a full array of scholarly information. The Curator will also be responsible for contributing to the development and pursuit of overall UWM Libraries goals and policies, as well as for contributing to the rapidly evolving field of cartographic and geospatial librarianship (including digital cartographic resources) at the local, national, and international levels.

Requirements – Master's degree or equivalent in geography or other relevant field; minimum of 5 years of progressively responsible experience in a research library or equivalent institution; supervisory experience of at least 5 years; successful grant writing and fundraising expertise; knowledge of emerging technologies; demonstrated strong professional leadership and involvement; strong

written and oral communication skills; experience with rare materials librarianship including conservation/preservation techniques; broad knowledge of library collections; knowledge of cartography, its history, and the history of geographical ideas; commitment to library leadership; initiative and resourcefulness in generating new ideas; and the ability to work collegially.

Preferred requirements – MLS or equivalent from an ALA-accredited program; PhD or ABD in geography, history or related field; accomplishments in research or scholarship; knowledge of two foreign languages; GIS experience.

Apply: Please apply at <http://jobs.uwm.edu/postings/8101>.

UWM is an AA/EEO Employer.  
MAY 12-83

#### \*TEXAS, COLLEGE STATION

Dr. Kathleen O'Reilly (Department of Geography, Texas A&M University) is seeking a **post-doctoral researcher beginning immediately**. This 12-month position is available for a one year term with the possibility of a second year. The Bill & Melinda Gates Foundation funded study will identify the socio-environmental factors influencing toilet-usage habits of families in rural West Bengal and Himachal Pradesh. Duties include assisting with data collection in India, data analysis and writing of scholarly products in College Station, TX. The position requires a completed PhD in geography or related field. For complete description and application procedures visit <http://oreilly.tamu.edu> under "Opportunities." Review of applications will continue until the position is filled. Texas A&M University is an Affirmative Action/Equal Opportunity Employer.

APR 12-80

## INTERNATIONAL

#### \*CHINA, HONG KONG

The Chinese University of Hong Kong. Applications are invited for: **Department of Geography and Resource Management, Associate Professor/Assistant Professor**. (Ref. 1112/158(005)/2) (Closing date: May 31, 2012).

The Department invites applications for a faculty post at Associate Professor/Assistant Professor level in urban studies. Applicants should have a PhD degree in urban studies or related disciplines, specializing in the following fields: 1) urban economics, 2) housing studies. Preference will be given to those with substantial research experience in urban studies in Hong Kong, the Chinese mainland and the Asia-Pacific region.

The appointee will teach, among others, introductory urban economics and advanced housing studies courses, as well as general education courses. He/she will be expected to demonstrate potential for teaching excellence, and to contribute actively and productively to research projects. Appointment will normally be made on contract basis for up to three years initially commencing August 2012, which, subject to funding, performance and mutual agreement, may lead to longer-term appointment or substantiation later. [Note: Those who have responded to the previous advertisement for the same post (under Ref. no. 1112/071/2) are under consideration and need not re-apply on this occasion.]

Salary and Fringe Benefits: Salary will be highly competitive, commensurate with qualifications and experience. The University offers a comprehensive fringe benefit package, including medical care, a contract-end gratuity for an appointment of two years or longer, and housing benefits for eligible appointee. Further information about the University and the general terms of service for appointments is available at <http://www.per.cuhk.edu.hk>. The terms mentioned herein are for reference only and are subject to revision by the University.

Application Procedure: Please send full resume, copies of academic credentials, a publication list and/or abstracts of selected published papers, together with names, addresses and fax numbers/e-mail addresses of three referees to whom the applicants' consent has been given for their providing references (unless otherwise specified), to the Personnel Office, The Chinese University of Hong Kong, Shatin, N.T., Hong Kong (Fax: (852) 3943-1462) by the closing date. The Personal Information Collection Statement will be provided upon request. Please quote the reference number and mark "Application – Confidential" on cover.

MAY 12-94-1

#### \*SINGAPORE

The National University of Singapore (NUS) invites applications for the position of **Lecturer/Senior Lecturer for the Environmental Studies Program** co-hosted by the Faculty of Science (FoS) and the Faculty of Arts and Social Sciences (FASS). The Bachelor of Environmental Studies Program is a new 4-year direct Honors program launched in Academic Year 2011/2012 and conducted by nine NUS faculties and schools. It is a multi-disciplinary program, jointly hosted by the Faculty of Science (FoS) and the Faculty of Arts and Social Sciences (FASS), with active participation from the Faculty of Engineering, Faculty of Law, School of

Design and Environment, NUS Business School, Yong Loo Lin School of Medicine, Saw Swee Hock School of Public Health and the Lee Kuan Yew School of Public Policy. The program is seeking new Faculty members to design and teach dedicated multidisciplinary environmental studies modules. For more information on these modules, applicants can access the following website: ([www.envstudies.nus.edu.sg/academic/programme-requirements/specially-designed-environmental-studies-modules.html](http://www.envstudies.nus.edu.sg/academic/programme-requirements/specially-designed-environmental-studies-modules.html)). Faculty members in these positions will report directly to the Director of the program.

The ideal candidate must possess a PhD and have expertise in an environment-related area (e.g. human or physical dimensions of environmental change, environmental conservation, management, law, policy, modeling human-environment interactions, etc.). Broad-based multi-disciplinary skills in this domain will be seen as an important attribute. Knowledge about current environmental issues and fieldwork experience in the Asian context will be an added advantage. The candidate should also have prior experience and demonstrated excellence in teaching at the undergraduate level. The successful candidate will be responsible for instruction in small class format, development of teaching materials, building case studies, as well as planning and leading field trips. He or she will be hosted by either the Department of Biological Sciences or Department of Geography. He or she will also have to help the Director oversee the curriculum as well as anchor some core modules in the degree program.

Interested candidates should submit their applications and indicate the level at which appointment is sought (including a letter of interest, full curriculum vitae, names and contact details of 3 referees) by April 30, 2012. Only shortlisted candidates will be notified. Successful candidates will be offered a two-year contract on a renewable basis. A competitive remuneration package, based on qualifications and experience will be offered. *Positions will remain open until suitable candidates are found.*

Applications are to be sent to: Chair of the Environmental Studies Search Committee (Attn: Ms Renee Lau), The National University of Singapore, Faculty of Science, Dean's Office, Blk S16, Level 2, 6 Science Drive 2, Singapore 117546.

For more information about NUS, please visit the website at: [www.nus.edu.sg](http://www.nus.edu.sg). For more information about the Environmental Studies Program, please visit our website at: [www.envstudies.nus.edu.sg](http://www.envstudies.nus.edu.sg). ■

MAY 12-97-1



## **Call for Papers and Posters**

### **18<sup>th</sup> International Interdisciplinary Conference on the Environment**

**June 30 - July 3, 2012  
Portland, Maine**

## **Interdisciplinary Environmental Association**

### **KAPPA ALPHA OMICRON**

The IEA welcomes research that crosses the boundaries of traditional disciplines to frame environmental problems, propose working models or initiate field or community projects. This meeting is held in tandem with Kappa Alpha Omicron, the honors society in Environmental Science and Studies, and welcomes submissions from undergraduate and graduate students.

---

For more information, contact Dr. Eric Fitch, Conference Chair at [fitche@marietta.edu](mailto:fitche@marietta.edu) or go to [www.ieaonline.org](http://www.ieaonline.org)

**Richard J. Houk**, aged 90, Professor Emeritus of the Department of Geography at DePaul University in Chicago, died on February 18, 2012.

Houk was the longest serving faculty member in the history of DePaul University. He joined DePaul in 1946 and continued teaching until 2010. He founded the Department of Geography in 1949, and established the DePaul Geographical Society as a student club in 1961. Houk served as a mentor and inspired countless students and faculty members.



Houk

In 1941, Houk received his B.A. in geography from Indiana University, and in 1950 earned a Ph.D. in geography from Northwestern University, writing his dissertation on "The Portuguese Maritime Fishing Industry." A veteran of the Second World War, because of his ability to speak Spanish and Portuguese, he was selected for duty with the Weather Service at a secret air base in the Azores in 1944.

During his long career Dr. Houk received many awards, honors, and recognitions. In

1963 he was awarded the decoration of Caballero del Orden de Merito Civil by the Spanish Government in recognition of years of unique efforts to increase and improve good relations between the U.S. and Spain. He was awarded a Fulbright Fellowship and in 1967 and in 1968 he lived in Portugal and studied its agricultural industry. A veteran traveler, over his lifetime he visited over one-hundred countries on six continents and led tour groups to many of these. His signature course was "The Iberian Impact: Spain and Portugal." The photo at left shows Houk teaching at DePaul University during the 1967-68 academic year. ■

## Books Received

Bauder, Harald, ed. *Immigration and Settlement: Challenges, Experiences, and Opportunities*. Toronto: Canadian Scholars' Press, 2012. 311 and 16 pp., n.p., ISBN 978-1-55130405-2.

Binns, Tony, Dixon, Alan, & Nel, Etienne. *Africa: Diversity and Development*. London and New York: Routledge, 2012. 414 and 17 pp., n.p., ISBN 978-0-415-41368-8.

Born, Megan et al., eds. *Dirt*. Philadelphia: PennDesign, viaBooks, Vol. 2, 2012. 321 pp., \$34.95, ISBN 978-0-262-51692-1.

Brunn, Stanley D., Hays-Mitchell, Maureen, and Zeigler, Donald J., eds. *Cities of the World: World Regional Urban Development*. Lanham, MD: Rowman & Littlefield, 5th revised ed., 2012. 632 and 33 pp., n.p., ISBN 978-1-4422-1284-8.

Carter, Eric D. *Enemy in the Blood: Malaria, Environment, and Development in Argentina*. Tuscaloosa, AL: University of Alabama Press, 2012. 283 and 15 pp., \$38.50, ISBN 978-8173-1760-7.

Dahmann, Donald C. *Geography in America's Schools, Libraries, and Home: A Comprehensive Bibliography of 19th Century Geography Books, Atlases, Globes, and Manuals*. Washington, DC: NCGE, Pathways Title #39, 2010. 119 & 100 pages, \$75.00, ISBN 978-0-9818324-1-8.

Elden, Stuart, ed. *Sloterdijk Now*. Malden, MA: Polity, 2012. 213 and 15 pp., \$22.95, ISBN 978-0-7456-5136-1.

French, Hugh & Slaymaker, Olav. *Changing Cold Environments: A Canadian Perspective*. Malden, MA: Wiley-Blackwell, 2012. 321 and 18 pp., n.p., ISBN 978-0-470-69969-0.

Gupta, Avijit. *Tropical Geomorphology*. New York: Cambridge University Press, 2011. 386 and 14 pp., \$75.00, ISBN 978-0-521-87990-3.

Krauss, Michael et al., compilers. *Map of Indigenous Peoples and Languages of Alaska*, New Edition. Chicago: University of Chicago Press, 2012. 1 sheet (folded), \$15.00, ISBN 978-1-55500-113-1.

Loftus, Alex. *Everyday Environmentalism: Creating an Urban Political Ecology*. Minneapolis: University of Minnesota Press, 2012. 165 and 36 pp., \$25.00, ISBN 978-0-8166-6572-3.

Nicholson, Sharon E. *Dryland Climatology*. New York: Cambridge University Press, 2011. 516 and 12 pp., \$150.00, ISBN 978-0-521-51649-5.

Pratt, Geraldine. *Families Apart: Migrant Mothers and the Conflicts of Labor and Love*. Minneapolis: University of Minnesota Press, 2012. 283 and 35 pp., \$22.50, ISBN 978-0-8166-6999-8.

Quelch, John A. & Jocz, Katharine E. *All Business is Local: Why Place Matters More Than Ever in a Global, Virtual World*. New York: Portfolio, Penguin, 2012. 248 pp., \$25.95, ISBN 978-1-59184-465-5.

Robbins, Paul. *Political Ecology: A Critical Introduction*. Malden, MA: Wiley-Blackwell, 2nd revised, ed., 2012. 288 and 9 pp., \$44.95, ISBN 978-0-470-65732-4.

Sánchez Ayala, Luis. *Geografía Humana: conceptos básicos y aplicaciones*. Bogotá: Universidad de los Andes. 2012. 210 pp. ISBN: 978-958-695-713-7.

Severino, Jean-Michel & Ray, Olivier. *Africa's Moment*. Malden, MA: Polity, 2011. 317 and 15 pp., \$25.00, ISBN 978-0-7456-5157-6.

Sullivan, Rob. *Geography Speaks: Performatic Aspects of Geography*. Surrey, England: Ashgate, 2011. 189 pp., \$89.95 (HC). ISBN 978-140-942-009-5 (hbk), 978-140-942-010-1 (ebk).

Wastl-Walter, Doris. Ed. *The Ashgate Research Companion to Border Studies*. Surrey, England: Ashgate, 2011. 727. ISBN 978-075-467-406-1 (hbk), 978-075-469-047-4 (ebk).

## University of New Mexico

For the past three years, the Geography Department at New Mexico State University (NMSU) has worked with a team of faculty from other NMSU Departments, including Animal and Range Science, Agricultural Economics and Business, Plant and Environmental Sciences, Civil Engineering, and the Water Resources Research Institute to develop a proposal for an interdisciplinary Ph.D. and MS in Water Science and Management. This program draws on the strength of these departments and offers graduate degrees in the areas of Agricultural Water Resources, Watershed, Riparian, and Aquatic

Systems; Water Quality and Treatment; Water Economics and Policy; and Water Informatics. The Board of Governors of the State of New Mexico has formally approved the program, to begin in fall of 2012. Program materials are currently being completed. Interested parties should contact Dr. Christopher Brown, Department Head of the NMSU Department of Geography (brownchr@nmsu.edu or 575-646-1892) for more information.

## Galapagos Initiative

A central element of the Galapagos Initiative was recently culminated through the dedication of the Galapagos Science

Center, a 20,000 square foot building constructed on San Cristobal Island in the Galapagos Archipelago of Ecuador. The Galapagos Science Center is a facility dedicated to research, education, and community outreach and engagement in a World Heritage Site. A joint project of the University of North Carolina at Chapel Hill and the Universidad San Francisco de Quito, the Galapagos Initiative was developed and is led by Dr. Stephen J. Walsh at UNC and Dr. Carlos F. Mena at USFQ. More information is available at <http://galapagos.unc.edu>. ■

## Of Note

2012 AAG Annual Meeting attendees sent over 1,000 letters to Congress in support of the Teaching Geography is Fundamental Act via [SpeakUpForGeography.org](http://SpeakUpForGeography.org). In addition, students from 36 universities joined the Speak Up For Geography Cam-

pus Challenge to advocate for geography education. West Virginia University undergraduate Meredith Sussman said, "I believe that geography can teach kids to think holistically about the issues of our complex and globalized world. That's why I joined

the Campus Challenge." To learn how to Speak Up For Geography on your campus and social networks, go to [sufgCampusChallenge.org](http://sufgCampusChallenge.org). Speak Up For Geography is not affiliated with the AAG. ■

## New AAG Book Aims to Improve Career Preparation

Whether you are just beginning as a major, taking classes toward a GIS certificate, working on an advanced degree, or considering a career change at a different point in your life, geography can lead to exceptional career opportunities. *Practicing Geography: Careers for Enhancing Society and the Environment* is a comprehensive new resource from the AAG and Pearson, designed to prepare geographers for careers in business, government, and non-profit organizations.

Developed by the AAG's EDGE project with support from the National Science Foundation, the book examines workforce needs, expectations, and core competencies in professional geography, with many chapters offering expert advice and insightful analyses on topics such as networking, managing work-life relationships, and professional ethics. Dozens of professional geo-

graphers are profiled in the book to illustrate the exciting range of career opportunities in geography today.

The AAG's Jobs and Careers website ([www.aag.org/careers](http://www.aag.org/careers)) has recently been updated with new resources for career information and planning. The website provides additional profiles of professional geographers along with a broad toolkit of data, tip sheets, and other resources useful for the job search and exploring career opportunities.

*Practicing Geography* is available through Pearson in paperback and e-book formats, and can be ordered online at [www.pearsonhighered.com](http://www.pearsonhighered.com). For additional information about the book and the AAG's EDGE project, visit [www.aag.org/edge](http://www.aag.org/edge).

To order, visit [www.pearsonhighered.com](http://www.pearsonhighered.com).

### PRACTICING GEOGRAPHY

Careers for Enhancing Society and the Environment

EDITORS  
MICHAEL SOLEM  
KENNETH FOOTE  
JANICE MONK



### Transformation in Urban China

To be held December 13-14, 2012, in Hong Kong, the International Conference on Spatial and Social Transformation in Urban China will cultivate academic exchange and high quality research on China's challenging urban transformations. This conference seeks to enrich, if not revolutionize, theories that have mostly been developed from the experiences of Western cities.

Authors are invited to submit paper abstracts of 300-500 words by email to [curs@hkbu.edu.hk](mailto:curs@hkbu.edu.hk). Selected papers may be published in an edited volume or special issues in international journals.

The AAG is co-sponsoring this event. Chair of the Organizing Committee is Donggen Wang of Hong Kong Baptist University. The deadline for submission of abstracts is July 31, 2012.

### Geographical Times

*The Geographical Times* is a free internationally distributed newspaper for geography students. This physical publication is a platform to share stories, ideas and perspectives of new critical and creative geographies. The newspaper is an opportunity for geography students of any age and ability to share their work, while also providing teachers, scientists, explorers, politicians and artists the opportunity to communicate with students. Editors are currently seeking provocative and engaging submissions which express

student views and opinions. Visit <http://geotimes.org.uk> or email questions to [geographicaltimes@gmail.com](mailto:geographicaltimes@gmail.com).

### Geographical Bulletin

The editor of *The Geographical Bulletin* is soliciting manuscripts for upcoming issues. The *Geographical Bulletin* is a peer-reviewed journal whose primary mission is to provide an outlet for undergraduate and graduate student research in all areas of geography. Non-student submissions are also welcome. To foster and encourage student publication, a "Best Student Paper" award with a \$200 prize is awarded each year to the best paper authored by students. Students who are completing original research through a senior thesis, master's thesis, Ph.D dissertation, or similar project, are encouraged to submit the results of their research in article form for publication. For a style sheet, visit GTU's website at [www.gammathetaupsilon.org/geographical-bulletin.html](http://www.gammathetaupsilon.org/geographical-bulletin.html). For further information, contact Steven M. Schnell, Editor, *Geographical Bulletin*, Department of Geography, Kutztown University of Pennsylvania, Kutztown, PA 19530. Phone: (610) 683-1595. E-mail: [schnell@kutztown.edu](mailto:schnell@kutztown.edu).

### Place and Displacement

The conference "Place and Displacement" will be held at Victoria University, Melbourne, Australia, November 21-23, 2012. This conference aims to unite students and academics focusing on research related to notions of place

and displacement and other stakeholders. It will also serve as a platform to promote collaboration on topics of interest between academics and foster relationships between academics and the wider community. In addition, organizers hope more light will be shed on the relevance of such research areas and their importance for local, as well as global communities. Conference organizers invite abstracts of papers, proposals for workshops, and symposia to address conference themes. Abstracts of no more than 150 words are due by June 20, 2012. For details see <http://communityidentity.com.au>.

### Visual Aspects of Performance

The Third Global Conference on Aspects of Performance Practice, to be held November 13-15, 2012 in Salzburg, Austria, will focus on the visual aspects of performance in work by visual and spatial artists and researchers in various performance disciplines and practices, including interdisciplinary work in geography, cartography, and visual art. Papers, workshops, presentations and pre-formed panels are invited on any conference theme. Abstracts of no more than 300 words should be submitted by Friday, May 4, 2012. If an abstract is accepted for the conference, a full draft paper should be submitted by Friday, August 3, 2012. Conference details are available at [www.inter-disciplinary.net/critical-issues/ethos/performance/call-for-papers](http://www.inter-disciplinary.net/critical-issues/ethos/performance/call-for-papers). ■

## Members of Note

**John Knox**, an associate professor of geography at the University of Georgia, has been named one of the 300 best undergraduate teachers in the nation, according to the *Princeton Review* and Rate MyProfessors.com. *The Best 300 Professors* was released on April 3, 2012.

Two of Knox's courses are general education requirements that introduce undergraduates to science and scientific method. In "Introduction to weather and climate" and "Introduction to physical geography" Knox reaches 400 to 500 students each year, whether they're

geography, English Lit, or business majors.

"To the extent possible, I won't just talk the whole class period," he said. "We'll do a demo or an experiment, or sometimes I will have students get up and they will role play the part of the wind or they'll play the part of a raindrop."

Knox also plays music and reads poetry that connects to the weather. "Somewhere in the semester, I'm trying to capture your attention," he said. He also tries to help students discover who they are, "instead of putting them in a box, to suggest other

boxes they might crawl into, rather than limiting options."

Knox also teaches classes at the junior/senior and graduate levels, conducts research and outreach and advises undergraduate and graduate students. According to his bio in *The Best 300 Professors*, his students say that "He adores what he's teaching, especially weather. He's very comical and really makes an effort to get to know everyone in a big class."

Knox earned his Ph.D. in atmospheric sciences from the University of Wisconsin-Madison in 1996. In 2010, he received

## 2011

### MAY

10-12. American Council of Learned Societies (ACLS) Annual Meeting. Philadelphia. [www.acls.org/about/annual\\_meeting](http://www.acls.org/about/annual_meeting).

14-17. Atlantic Geographies. Miami, FL. [www.as.miami.edu/ams/atlanticgeographies](http://www.as.miami.edu/ams/atlanticgeographies).

18-19. Envisioning a New Republic—Cartography from 1750-1800. Library of Congress, Washington DC. Contact John Hessler, senior cartographic librarian: [jhes@loc.gov](mailto:jhes@loc.gov).

28-June 2. Canadian Association of Geographers (CAG) Annual Meeting. Waterloo. <http://env.waterloo.ca/cag2012/en>.

### JUNE

1-3. 2012 EUROGEO Annual Meeting and Seminar. Dublin, Ireland.

10-16. **Geography Faculty Development Alliance (GFDA) Workshop in Early Career Development.** Boulder, CO. [www.aag.org/education](http://www.aag.org/education).

13-16. **AAG Department Leadership Workshop.** Boulder, CO. [www.aag.org/healthydepartments](http://www.aag.org/healthydepartments).

15-17. Geoinformatics 2012. Hong Kong. [www.cpgis.org](http://www.cpgis.org).

17-22. T3G – GIS Education. Redlands, CA. <http://edcommunity.esri.com/t3g>.

20-22. 2012 UN Conference on Sustainable Development (INCSD) "Rio+20." Rio de Janeiro, Brazil. [www.earthsummit2012.org](http://www.earthsummit2012.org).

21-22. Conference of the Society of South African Geographers. Cape Town. [www.ssag.co.za](http://www.ssag.co.za).

### JULY

3-5. RGS/IGB Annual International Conference. Edinburgh, Scotland. [www.rgs.org](http://www.rgs.org).

23-27. Esri International Users Conference. San Diego, CA. [www.esri.com/events/user-conference](http://www.esri.com/events/user-conference).

27-28. AAG-NIH Symposium "Geospatial Frontiers in Health and Social Environments." San Diego, CA.

### AUGUST

26-30. 32nd International Geographical Congress (IGU). Cologne, Germany. <https://igc2012.org>.

### SEPTEMBER

16-18. AutoCarto 2012. Columbus, OH. [www.cartogis.org](http://www.cartogis.org).

18-21. **GIScience 2012.** Columbus, OH. [www.giscience.org](http://www.giscience.org).

### OCTOBER

4-6. **Pacific Coast AAG Division Meeting.** Olympia, WA. [www.csus.edu/apcg](http://www.csus.edu/apcg).

4-7. National Conference on Geographic Education (NCGE). San Marcos, Texas. [www.ncge.org](http://www.ncge.org).

10-13. Applied Geography Conference. Minneapolis, MN. <http://applied.geog.kent.edu/appliedgeog>.

11-13. **Great Plains/Rocky Mountains AAG Division Meeting.** Provo, UT. <http://fast.ucdenver.edu/rmgpaag>.

13-20. DISCCRS VII, Interdisciplinary Climate Change Research Symposium. Colorado Springs, CO. <http://discrs.org>.

19-20. **NESTVAL AAG Division Meeting.** Farmington, ME. <http://nestvalonline.org>.

24-26. Race, Ethnicity and Place Conference. San Juan, PR. <http://rep-conference.binghamton.edu>.

25-27. **East Lakes AAG Division Meeting (jointly with West Lakes).** DeKalb, IL. [www.niu.edu/geog](http://www.niu.edu/geog).

25-27. **Southwest AAG Division Meeting.** Las Cruces, NM. [www2.geog.okstate.edu/swaag](http://www2.geog.okstate.edu/swaag).

### NOVEMBER

2-3. **Middle Atlantic AAG Division Meeting.** Salisbury, MD. <http://sites.google.com/site/aagmad>.

2-3. **Middle States AAG Division Meeting.** Shippensburg, PA. <http://departments.bloomu.edu/geo/msd>.

8-10. From the Outside In: Sustainable Futures for Global Cities and Suburbs. Hempstead, NY. [www.hofstra.edu/sustainablefutures](http://www.hofstra.edu/sustainablefutures).

15-18. American Studies Association Annual Meeting. San Juan, Puerto Rico. [www.theasa.net/annual\\_meeting](http://www.theasa.net/annual_meeting).

18-20. **SEDAAG Division Meeting.** Asheville, NC. [www.sedaag.org](http://www.sedaag.org).

### DECEMBER

13-14. Spatial and Social Transformation in Urban China. Hong Kong. [www.hkbu.edu.hk/curs/2012conference](http://www.hkbu.edu.hk/curs/2012conference).

## 2013

### APRIL

**9-13. AAG Annual Meeting**  
Los Angeles, CA. [www.aag.org](http://www.aag.org).

## 2014

### APRIL

**8-12. AAG Annual Meeting**  
Tampa, FL. [www.aag.org](http://www.aag.org).

## 2015

### APRIL

**21-25. AAG Annual Meeting**  
Chicago, IL. [www.aag.org](http://www.aag.org).

Members of Note continued from page 22

the T. Theodore Fujita Research Achievement Award from the National Weather Association.

Knox was the only geography professor in the nation selected for *The Best 300 Professors*. For more information and to see the complete list of best professors, see [www.princetonreview.com/best-professors.aspx](http://www.princetonreview.com/best-professors.aspx).

Dist. Prof. **Mark D. Schwartz**, Chair of the Geography Department at the University of Wisconsin-Milwaukee (UWM), has been elected President-Elect of the International Society of Biometeorology (ISB) and will serve in this position until 2014, at which time he will start his three-year term as ISB President. He is a

climatologist who studies seasonal interactions between plants and the lower atmosphere using phenology. Schwartz received his Ph.D. from the University of Kansas (1985), and his B.S. and M.S. from Michigan State University. He has been a faculty member at UWM since 1992. ■

May 2012

**Association of American Geographers**  
**1710 Sixteenth Street NW**  
**Washington, D.C. 20009-3198**

Periodicals  
postage paid  
at  
Washington,  
DC

Publications Mail Agreement No. 40717519 Return undeliverable Canadian addresses to: PO Box 503, RPO West Beaver Creek, Richmond Hill, ON L4B 4R6

## **AAG Annual Meeting – Los Angeles**

### **April 9-13, 2013**

We invite you to begin making plans to participate in the 2013 AAG Annual Meeting, to be held in Los Angeles, California.

Los Angeles and the surrounding region is a mix of fascinating and complex geographies. A mosaic of dynamic urban and demographic change, L.A. remains a center of debate over topics as diverse (or, conversely, interrelated) as migration and race, water resources, hazards and disaster preparedness, cultural identity, geographies of media and film, coastline development, spaces of surveillance and policing, literary geographies, post-modern urbanism, and geographies of tourism.

Los Angeles and Southern California offer many unique opportunities for field trips across a diverse range of geographic interests. Specialists from biogeography to demography will find much to see and do, and we encourage conference attendees to organize or attend AAG field trips or plan to extend their

stays to explore the area with colleagues. Field trip locations are likely to include Catalina Island, the Museum of Tolerance and the Japanese American National Museum, Griffith Observatory, Anza-Borrego Desert State Park, a tour of the Department of Water and Power, stops along the San Andreas Fault, and local wineries, among others.

The 2013 AAG Annual Meeting will include many high profile speakers, invited guests, and panelists from both inside and outside of geography, including the private sector and government agencies. The AAG call for papers will be released this summer with a deadline for abstracts to be set for early fall. Field trip and workshop proposals will be due in November. The conference will of course include popular annual events and attractions such as the Exhibit Hall, the JIG Center, the Awards Luncheon, late-breaking news sessions, and the World Geography Bowl.

A special rate will be available to registered meeting attendees at the conference hotel, so plan on booking early. The 2013 AAG Annual Meeting will be within easy reach of international attendees through Los Angeles International Airport (LAX) and other regional terminals.

The AAG Annual Meeting is always an excellent opportunity to renew acquaintances, meet new colleagues, share and discuss ideas, and build enthusiasm and momentum for the progress of the discipline. We look forward to seeing you in Los Angeles.



CREDIT: ISTOCK