

In This Issue



From the Meridian	2
President's Column	3
Focus on New York	7
Washington Monitor	9
Profiles of Professional Geographers	10
Op-Ed	15
New Appointments	20
Forthcoming in AAG Journals	22
Award Deadlines	23
Jobs in Geography	24
Of Note	35
Necrology	36
Call for Papers	38
Grants and Awards Received	38
Events Calendar	39
Specialty Group News	39

AAG Annual Meeting Highlights

February 24-28, 2012, New York

The 2012 AAG Annual Meeting in New York will offer many exciting opportunities for geographers and related scholars and professionals to interact around topics of common interest. Several featured themes will highlight the conference, including social justice, media, and human rights; international finance and economics; contributions of physical geography to sustainable development; GIScience, cyberinfrastructure, and social media; the United Nations; geography and the humanities; and a special symposium will explore qualitative GIS throughout the day on Friday and Saturday. In addition to hundreds of paper and panel sessions addressing topics across the breadth of geographic scholarship and innovation, numerous plenaries, workshops, field trips, an extensive Exhibit Hall, and receptions will take place. Here we highlight only a few of the many exciting sessions and events planned for the 2012 AAG Annual Meeting, to be held February 24-28, 2012 in New York.

Opening Plenary

The AAG Presidential Plenary will open this year's Annual Meeting on Friday evening, February 24 at 6:30 p.m. To be held in the Hilton Hotel's Sutton Parlor Center, "The City Beyond Symbolism," organized by AAG President **Audrey Kobayashi**, will explore the struggle for social justice in the contemporary city.

The distinguished panel includes **Grace Lee Boggs**, a much honored philosopher, activist, and public intellectual whose major writings include *Revolution and Evolution in the Twentieth Century* (with James Boggs); **Ruth Gilmore**, professor at the CUNY Graduate Center and author of *Golden Gulag: Prisons, Surplus, Crisis, and Opposition in Globalizing California*; **Scott Kurashige**, social activist and Director of Asian/Pacific Islander American Studies at the University of Michigan, and the author of *The Shifting Grounds of Race: Black and Japanese Americans in the Making of Multiethnic Los Angeles*;

Continued on page 4

Getting Around New York

A Primer on Public Transportation

Negotiating the Subway

A few weeks ago on my commute home, I overheard a Japanese tourist ask a couple who seemed to only speak Spanish why the train we were on just passed 36th Street instead of 36th Avenue. He had gotten on a "yellow" train. What had he done wrong? Were we even in Queens? Seeing the confusion among the three of them, I stepped in and asked the young man where he needed to go. Yes indeed, he needed a train with a yellow logo, but unfortunately there are three "yellow" train lines, and he had gotten on the only one that would not get him to his desired stop. This was easily resolved since he was heading to my neighborhood, and if he got off the subway with me, he would only have about a 6-block walk to get where he needed to go.

Negotiating the subway system in New York can be a bit of an adventure. New York City hosts the oldest and most complex public transportation system in the country. There currently are 23 interconnected subway lines, with one more under construction, and literally hundreds of bus lines. It is the only system with both "local" and "express" routes. It can be very confusing for the uninitiated, and even for those of us who live here and use the system daily. For example, I recently needed to get to the Hilton for the Program Committee meeting. I live in Queens, and normally I can get into Manhattan without any problems. However, it was Saturday, and track repairs are made on Saturdays. All trains

Continued on page 16



For tips on navigating public transportation in New York, see article at right.

AAG Newsletter
of the
**Association of American
Geographers**

Douglas Richardson, Publisher
and Managing Editor

Jim Ketchum, Editor
AAG Voice 202-234-1450
AAG Fax 202-234-2744
newsletter@aag.org
www.aag.org

USPS 987-380 ISSN 0275-3995

The AAG Newsletter ISSN 0275-3995 is published monthly with July/August combined, by the Association of American Geographers, 1710 16th Street NW, Washington, DC 20009-3198. The cost of an annual subscription is \$25.00. The subscription price is included in the annual dues of the Association. Not available to non-members. Periodicals postage paid in Washington, DC. All news items and letters, including job listings, should be sent to the Editor at the address below or to newsletter@aag.org.

All Newsletter materials must arrive at the Association office by the 1st of the month preceding the month of the publication. This includes job listings. Material will be published on a space available basis and at the discretion of the editorial staff.

When your address changes, please notify the Association office immediately. Six weeks notice is necessary to ensure uninterrupted delivery of AAG publications. To assist the AAG office in your address change, include the address label with your change of address.

Postmaster: Send address changes to AAG Newsletter, 1710 16th Street NW, Washington, DC 20009-3198, or address@aag.org.

Welcoming International Geographical Societies to New York

One of the greatest pleasures of a sometimes grueling travel schedule is the opportunity to meet with my

counterparts and colleagues at other geographical societies. I always try to find time to meet with them, to share information and news regarding geography, to discuss possible collaborations, and when possible to participate in their annual meetings.

This year in New York City all geographers in attendance will have the opportunity to welcome dozens of leaders of geographical societies from around the globe. A special session will feature a series of brief summaries of the status of geography in other countries from top officials of their national geographical associations. This kaleidoscope of international geography will provide a venue for leaders of international associations to interact with one another, and with AAG meeting attendees as well. This special session, entitled "Snapshots: Geography in the World Today," will be held from 2:30 - 6:20 p.m. on Sunday, February 26, 2012 in the Nassau B room of the New York Hilton Hotel, and will be moderated by Ken Foote, AAG Past President. Please join Ken, me, and our international guests for what promises to be a fascinating exchange on the status of geography worldwide.

During my sabbatical this past year, I was able to meet with many and varied geographical societies throughout Europe and Asia. Many of these societies now will be working together with the AAG on ongoing projects, such as the *International Encyclopedia of Geography*, and on preparations for a geography presence at the decadal UN Sustainable Development Conference (also known as Rio+20), to be held in June 2012 in Rio de Janeiro. We welcome the participation of all other

societies that may be interested in these activities.

New Collaborations with China

As part of a two-month visiting professorship at the Chinese Academy of Sciences (CAS), I was fortunate to be able to attend the annual meeting of the Geographical Society of China (GSC), held in Urumqi (Wulumuqi) in Xinjiang Province, as well as to work with many others

to establish and solidify multiple collaborative initiatives between the AAG and leading Chinese geographical institutions, including the GSC, the CAS, and many university geography departments throughout China.

These collaborative projects and programs encompass geographic research, international education, publications, specialty scientific meetings, larger international conferences, and academic exchanges. An ad hoc GSC-AAG Liaison and Coordination Committee has been established to help coordinate, sustain, and further develop and expand these collaborations. Its initial members include eight leading geographers from China and the US: Zhou Chenghu (CAS), Yu Lizhong (President of East Normal China University), Liu Weidong (CAS), Zhang Guoyou (CSG), Michael Solem and Douglas Richardson (AAG), Mei-Po Kwan (OSU), and Alexander Murphy (U-Oregon). Initial co-chairs of the committee are Yu Lizhong and myself. These joint projects are cross-cutting and designed to produce progress for geography in both countries, and to foster broader personal and professional interaction among individual geographers from the US and China.

The AAG and the Geographical Society of China will formalize these current collaborative activities through the signing of



Richardson

Continued on page 4

Geographical Education Connecting the World

Geographers spend a lot of time and words imagining better cities. The city and its historical forms has been one of the central themes, and quite possibly the single largest generator of geographical imagination: as an endless experiment in social organization and government, as an ever agglomerating complex of capital and power, as a constellation of more, and more diverse, numbers of people, as an incubus of human creativity, as a sink of violence and poverty, as a network of practical challenges from organizing traffic to provisioning daily life, as a setting for the expression of human rights, and as a spectacular expression of what is humanly possible. And there is none more spectacular than New York, where all of these questions will be addressed during our upcoming Annual Meeting.

I have devoted a number of columns now to the New York meeting, which promises a dizzying set of sessions devoted to the big, connected geographical questions about the future of cities, the role of the United Nations, shifts in neoliberal governance, social movements in cities, and the relationship between geography and the media. The media will be highlighted by a talk on Tuesday, February 28, by Nicholas Kristof, *New York Times* columnist and two-time Pulitzer Prize winner, whose columns address the tough questions about social justice all over the world, through the lens of those big geographical questions.



Pulitzer Prize winning journalist Nicholas Kristof will participate in a panel discussion on social justice, media, and human rights at the AAG Annual Meeting.

What is so compelling about Kristof's writing is that he connects the big issues to the lives of ordinary people. His columns often present compelling stories of individuals—a child in a war-torn setting, a victim of sexual slavery, a humanitarian working in a refugee camp, a member of the Muslim Brotherhood at home—but they are never just about those individuals. He covers the spectrum of humanity, connecting daily experiences of hope, caring, suffering, or inspiration to the international banking system, global peace, natural and human-made disasters, new advances in science. Notwithstanding the disturbing content of much of his writing, he believes that the world is becoming better.

Recently, Kristof has devoted several columns to the topic of education, and especially to the challenges of public education in New York City; his claim: "I think education is, in the long run, the most important challenge America faces and the one where we're in greatest difficulties" (*NYT*, January 21, 2012). His education series sprang from the story of appellate court judge Olly Neal, whose life was transformed by one teacher. Scanning the hundreds of responses to the column, it is possible to spot the connections that clarify why education needs to be considered not only for its own sake but as part of every public issue, as a factor in

the predilections of presidential candidates, the ethical choices made by individuals in the banking industry, the care people receive in the provision of public health, and so on. Education, as depicted by Kristof, runs the full stretch from one-on-one relations in the classroom to international relations, in a way that highlights the very human choices faced daily by educators.

Kristof's writing reminds me of the best geographical scholarship, that which situates a single student within the context of the city with all its challenges, within the nation with all of its complications, within the world with all of its dramatic transformations. In our continuing quest to engage policy makers to

include geographic education in the national curriculum, to ensure that No Child Left Behind lives up to its promise, or to ensure that teaching geography makes a difference at every educational level, we take a similar approach as geographers. Another session in New York will address K-12 Education and Public Policy, bringing together professional

geographers and policy makers to discuss the important public role of education, as well as to update the situation with respect to the *AAG Resolution Supporting K-12 Geography Education*, now endorsed by four former U.S. Secretaries of State, several Governors, and large corporations, and our initiatives to enhance college affordability (for details, see page 9). Education is not just about education in any limited sense, but about connecting the particular to the universal and making a world of difference. Yes, of course there is a connection between understanding the historic role of cities and contemporary international events, and education provides not only understanding of the connection, but the tools to change it, to make a difference.

I look forward therefore to hearing Nicholas Kristof, to gaining a more personal sense of his ability to express so fluently the myriad ways in which the events of the world are connected, while he insists that understanding starts "On the Ground" (the title of his blog). It will be a special pleasure to host him at our Annual Meeting in New York City, that spectacular setting for humanity with all of its connected challenges, including those of education. ■

Audrey Kobayashi
kobayasi@queenssu.ca



Kobayashi

Don Mitchell, Distinguished Professor of Geography at Syracuse University and author of a number of influential publications on space and social justice, including *The Right to the City: Social Justice and the Fight for Public Space*; and **Frances Fox Piven**, professor of political science and sociology at the CUNY Graduate Center who has throughout her career combined academic work with political action, and who has received both career and lifetime achievement awards from the American Sociological Association. AAG Executive Director **Douglas Richardson** will provide welcoming remarks.

AAG Chairs' Symposium

For the 2012 Annual Meeting in New York, AAG Past President **Ken Foote** has organized a half-day symposium on "Developing Effective Strategic Plans and Program Reviews," scheduled from 8:00 a.m. to 11:40 a.m. on Saturday, February 25. This symposium focuses on strategies for developing strategic plans as well as responding to department and program reviews. Although listed in the conference program as two separate panels, the two have been organized together as a single event to allow ample time for presentations, panel discussions, and small group breakouts. Organizers are **Ken Foote**, **Stuart Aitken**, **Ines Miyares**, **Benjamin Ofori-Amoah**, and **Dan Shrubsole**. This symposium will be held in the Mercury Ballroom on the third floor of the Hilton Hotel. The annual Department Chairs' Luncheon immediately follows.

International Reception

A special reception to welcome all attendees of the 2012 Annual Meeting

will be held in the conference Exhibit Hall on Saturday, February 25, from 7:30 p.m. to 9:30 p.m. An opportunity to see old friends and meet colleagues at the outset of the AAG Annual Meeting, attendees will also have the opportunity to survey the many exhibit booths and speak with exhibitors. Free drink tickets are provided in registered attendees' conference welcome packets, available at conference registration.

Exhibit Hall

The always popular Exhibit Hall is a vital part of the AAG Annual Meeting displaying the latest publications in geography; tools in teaching, field research, graphic applications, computer modeling, and data collection and analysis; and the most recent technical advances in cartography, GIS, and GPS. The Exhibit Hall will be located in the Rhinelander Gallery



The Exhibit Hall is always a popular stop for conference-goers.

on the second floor and Americas Hall I on the third floor of the Hilton Hotel. It will open on Saturday, February 25, at 9:30 a.m. and stay open through 9:30 p.m., and will be open on Sunday from 9:30 a.m. to 5:30 p.m., and Monday from 9:30 a.m. to 3:30 p.m.

AAG Atlas Award

Dr. **Mary Robinson**, a world-renowned advocate for human rights, former President of Ireland (1990-1997), and former UN High Commissioner for Human Rights, will receive the AAG Atlas Award and deliver an address on climate justice and international efforts to combat climate change, most recently at the COP17 in Durban. Her address, "Mapping the Future of Climate Change" will follow presentation of the Atlas Award by **Douglas Richardson**, AAG Executive Director, and AAG President **Audrey Kobayashi**. This event will be held on Saturday, February 25, from 6:30 p.m. to 7:30 p.m. in Sutton Parlor Center, second floor of the Hilton Hotel.

Human Rights Panel

Featuring Pulitzer Prize winning columnist **Nicholas Kristof** of *The New York Times*, **Salil Shetty**, Secretary General, Amnesty International, and **Ivan Šimonović**, Assistant Secretary-General of the Office of the UN High Commissioner for Human Rights, this panel will discuss themes surrounding human rights, social justice, and the role that media plays in reporting on and bringing light to these issues. **Douglas Richardson** will provide opening remarks on the AAG's Geography and Human Rights Program and will moderate this session with introductions by AAG President **Audrey Kobayashi** and **Jessica Wyndham**, Associate Director of the Scientific Responsibility, Human Rights, and Law Program, AAAS. The session will be held on Tuesday, February 28, from 10:00 a.m.

Continued on page 5

a Memorandum of Understanding, developed during my recent trip to China. This formal signing ceremony will occur during the AAG Annual Meeting in New York City at 6:30 p.m. on Sunday, February 26, after the conclusion of the special international sessions mentioned above, and will precede Ken Foote's Past President's Address in the Sutton Parlor Center on the

second floor of the Hilton. All are invited to attend.

I encourage you to take a moment to welcome our international attendees from all countries to the AAG meeting in New York City, and to explore with them ways in which we might mutually benefit from our exchanges and strengthen geography through our collective efforts. Thanks,

and I hope you enjoy the meeting in New York, meeting old and new friends, enriching our discipline and ourselves intellectually and socially, and perhaps along the way also addressing the many needs of our interconnected world. ■

Doug Richardson
drichardson@aag.org

Annual Meeting Highlights from page 4

to 11:40 a.m., in the Petit Trianon room on the third floor of the Hilton Hotel.

Federal Sessions

The Annual Meeting will include several sessions featuring speakers from key federal agencies. **Robert Groves**, Director of the U.S. Census Bureau, will discuss "Visualization of Statistical and Spatial Data for Decision Making" on Friday, February 24, from 11:40 a.m. to 12:50 p.m. **William Clark** of UCLA will provide the introduction. On Saturday, February 25, from 11:40 a.m. to 12:50 p.m., **Anne Castle**, Assistant Secretary for Water & Sciences, U.S. Department of the Interior, will make a presentation on "Landsat at 40 – Prime Productive Years or Mid-Life Crisis?" **Marilyn Raphael** of UCLA will provide introductory remarks. On Sunday, February 26, from 11:40 a.m. to 12:50 p.m., **Myron Gutmann**, Assistant Director, National Science Foundation Directorate for Social, Behavioral & Economic Sciences, will present "Questions Without Borders: Why Future Research Will Be Interdisciplinary and How We Can Foster It." **Douglas Richardson**, AAG Executive Director, will provide the introduction.

All three of these presentations will be held in the Trianon Ballroom on the third floor of the Hilton Hotel.

Ground Zero

A special presentation by the architect of the National 9/11 Memorial, **Michael Arad**, has been organized by AAG Past President **Ken Foote** for Monday, February 27, at 6:30 p.m. Arad's presentation,

"Building the National 9/11 Memorial: A Site of Memory and Remembrance," will be held in the New York Ballroom of the Sheraton Hotel. Arad won the international competition held in 2003 to design the 9/11 Memorial at the World Trade Center site. His design, "Reflecting Absence," was selected from more than 5,000 entries. This session will be of particular interest to geographers concerned with ongoing debates over landscape history, public memory, place and commemoration. The memorial opened in September of 2011 and is only about two miles from the site of the Annual Meeting. Visitor passes to the memorial should be reserved in advance. See www.911memorial.org for more information.

Past President's Plenary

In his Past President's Address at the 2012 Annual Meeting, **Ken Foote** will focus on issues vital to sustaining and expanding geography's role in science and society: building a strong sense of community and changing our disciplinary culture in ways that respond to changing opportunities and challenges. The address will be held on Sunday, February 26, from 6:30 p.m. to 7:30 p.m. in Sutton Parlor Center on the second floor of the Hilton. AAG Executive Director **Doug Richardson** will provide an introduction to the session and sign a Memo of Understanding between the AAG and the Geographical Society of China prior to the Address. AAG Presidential Achievement Awards will be presented to **Laura Pulido** (University of Southern California) and **Dawn Wright** (Oregon State University and Esri).

AAG Honorary Geographer

Saskia Sassen, Robert S. Lynd Professor of Sociology at Columbia University and Centennial Visiting Professor at the London School of Economics, has been named the AAG's 2012 Honorary Geographer. She will receive the award and deliver a presentation entitled, "Analytic Tactics: Geography as Obstacle" on Sunday, February 26, from 11:40 a.m.

to 12:50 p.m. in Sutton Parlor North on the second floor of the Hilton Hotel. Sassen is the author of *The Mobility of Labor and Capital*, *The Global City*, and *Territory, Authority, Rights: From Medieval to Global Assemblages*.

World Geography Bowl

The 2012 World Geography Bowl, pitting student teams from the AAG's regional divisions against each other in a high-spirited quiz competition, will be held on Monday evening, February 27, beginning at 7:00 p.m. (Beekman Parlor, Regent Parlor, Sutton Parlor Center, Sutton Parlor North, Sutton Parlor South in the Hilton Hotel). The Championship Round will begin at approximately 10:00 p.m.

New York Public Library Events

The AAG and the New York Public Library are co-sponsoring five special sessions on "Working with Digital Archives of Historical Maps," as part of the 2012 AAG Annual Meeting in New York. These sessions will be held at the New York Public Library on Saturday, February 25, beginning at 10:00 a.m. All registered meeting attendees are welcome to attend. This special set of sessions will conclude with a keynote presentation featuring **David Rumsey**, President, Cartography Associates, **Humphrey Southall**, University of Portsmouth, and **Petr Pridal**, Moravian Library. Sessions will last throughout the day and celebrate the creation of substantial digital map libraries over the past ten years, while exploring what geographers and librarians can do with these growing digital collections. The New York Public Library's main lecture theatre is only a ten-minute walk from the AAG conference hotels.

Featured Speakers in Economics

Distinguished guest **Jeffrey Sachs** will speak as part of the "international finance and economics" theme in a special session on Sustainable Development scheduled for 11:50 a.m. on Monday, February 27, 2012,

Continued on page 6



Michael Arad will discuss his design for the National 9/11 Memorial at the Annual Meeting.

to be held in the Trianon Ballroom of the Hilton. Sachs is Director of the Earth Institute at Columbia University. He will be joined by **Juha Uitto** of the United Nations Development Program.

Dani Rodrik of Harvard will also speak as part of the international finance and economics track when he presents the annual Roepke Lecture in Economic Geography, "Who Needs the Nation-State?" on Saturday, February 25, at 2:40 p.m. **John Agnew** of UCLA will serve as discussant for the presentation, to be held in the Trianon Ballroom of the Hilton Hotel.

Oren Lyons, Jr., faithkeeper of the Turtle Clan of the Onondaga Nation and Professor Emeritus of American Studies at New York State University, will discuss the relationship between global economic forces and environmental ethics on Saturday, February 25, from 4:40 p.m. to 6:20 p.m. in Empire Ballroom West on the second floor of the Sheraton Hotel. Lyons is the Indigenous Peoples Specialty Group's featured speaker.

Field Trips and Workshops

Many unique local field trips and workshops are available during the AAG Annual Meeting and still had space available at press time. See the full list on page 21. Participation in field trips and

workshops may be purchased on-site in New York at the AAG Annual Meeting customer service desk in the Hilton Hotel, right next to conference registration.

Arts and Cultural Events

New York offers thousands of cultural activities, events, and opportunities for participation, most within walking distance or a short taxi ride from the Hilton Hotel. For example, just two blocks away, the Metropolitan Museum of Art recently re-opened its 30,000 square-foot American Wing following a massive renovation. The Met's holdings are particularly rich in the works of the great masters, including Emanuel Gottlieb Leutze (*Washington Crossing the Delaware*), John Singleton Copley (*Daniel Crommelin Verplanck*), Gilbert Stuart (*George Washington*), Thomas Cole (*The Oxbow*), Church (*The Heart of the Andes*), Winslow Homer (*Prisoners from the Front*), Thomas Eakins (*Max Schmitt in a Single Scull*), and John Singer Sargent (*Madame X*). A walking guide, diagrams of the gallery space and more are available at www.metmuseum.org/collections/new-installations/american-wing.

Numerous other museums, galleries, and sites of interest are within easy reach for conference-goers, including the

Guggenheim Museum (www.guggenheim.org), the Museum of Modern Art (www.moma.org), the American Folk Art Museum (www.folkartmuseum.org), the American Museum of Natural History (www.amnh.org), the New Museum (www.newmuseum.org), the Brooklyn Museum (www.brooklynmuseum.org), the Whitney Museum of American Art (<http://www.whitney.org>), the New-York Historical Society (www.nyhistory.org), the Jewish Museum (www.thejewishmuseum.org), and the Paley Center for Media (formerly the Museum of TV and Radio, www.paleycenter.org). Listings of New York's jazz and blues clubs are available at www.ny.com.

Special Exhibits

Curator **Gabrielle Bendiner-Viani** has extended the exhibition, "Layered SPURA: Spurring Conversations through Visual Urbanism" at the New School through Saturday, February 25, in order to coincide with the AAG Annual Meeting. She will lead an AAG field trip to the exhibition on Friday. Both events are part of the geography & humanities track of sessions.

The Cultural Geography Specialty Group has organized its fourth annual landscape photography exhibition, showcasing photographs with short descriptive captions from both fieldwork and more everyday encounters with cultural landscapes. This exhibit will be located near AAG Registration in the lobby on the second floor of the Hilton Hotel, from Saturday, February 25 through Monday, February 27.

Late-Breaking News Panel Sessions

The AAG has organized two "late-breaking news" panel sessions at the Annual Meeting. We invite you to attend these sessions, which will address the European economic crisis and the geography of the unfolding U.S. presidential campaign.

The Euro Crisis

Friday, February 24, 4:40 p.m.
Concourse E, Hilton Hotel

Panelists

Gordon L. Clark, University of Oxford
(organizer)
Dariusz Wojcik, University of Oxford
(organizer)
Maria Kaika, University of Manchester
Harald Bathelt, University of Toronto
Ewald Engelen
Gary Dymski

The Political Landscape of the 2012 U.S. Presidential Election

Friday, February 24, 12:40 p.m.
Gibson Suite, Hilton Hotel

Panelists

Fred Shelley, University of Oklahoma
(organizer and chair)
John C. Archer, University of Nebraska
Amy Glasmeier, Massachusetts Institute of Technology
John Heppen, University of Wisconsin River Falls
Barney Warf, University of Kansas
John Wertman, Association of American Geographers

AAG Awards Luncheon

AAG Honors and awards will be presented at the annual AAG Awards Luncheon, this year to be held on Tuesday, February 28, from noon to 2:30 p.m. (Trianon Ballroom, Hilton Hotel). In addition to AAG Honors in recognition of lifetime achievement, scholarship, service, publishing, and education, the AAG's annual book awards will be presented along with specialty group and many other awards. Tickets for this event may be purchased at the customer service desk in the AAG Registration area on the second floor of the Hilton Hotel. ■

The City's "Wildest" Residents

Urban Wildlife in New York City

Cities, like New York, are often thought of as devoid of nature and wildlife, and it is easy to see why. Skyscrapers of glass and steel, block upon block of concrete apartment buildings and a dense grid of paved roads can give one the impression that the city is only for human habitation. This common misperception, however, is far from reality. Nature is ever present in New York City, and the boroughs are teeming with wildlife. Robert Sullivan, local author and unconventional naturalist, has recently documented a plethora of wild spaces and their inhabitants throughout New York City, many of whom have been making news headlines.¹ Wild turkeys, for instance, regularly hold up traffic on Staten Island, a coyote was recently found wandering around Tribeca, and who could forget Pale Male, the red-tailed hawk who made history by becoming the first of his species to claim Central Park as his resident territory and then by nesting on the penthouse of an Upper East Side apartment building, much to the widely publicized chagrin of many of the building's human occupants.

Perched high above Fifth Avenue, Pale Male and his current mate, Ginger, survey the grounds daily for abundant prey, which includes pigeons, song birds and rats. They, like many New Yorkers, are drawn to some of the most sought after and highly prized real estate in the city. Red-tailed hawks prefer perches at the

edges of open spaces, providing a good view of the surrounding area. Many take to the tree tops, but some hawks have taken advantage of the sills and elaborate facades of apartment buildings bordering the many parks in Manhattan. Similarly, Peregrine falcons have been drawn to crevices in highrise towers, which resemble those narrow openings found in the cliffs they will typically occupy elsewhere. The combination of architectural features and abundance of city parks has made New York City a veritable urban jungle.

At 843 acres, spanning from 59th to 110th Street, Central Park alone provides habitat for multitudes of animals and a wide diversity of species. A patchwork of rambling paths, manicured lawns and flower beds, lakes, streams and ponds, it also houses a large number of benches, bridges, baseball diamonds, decorative fountains, ice rinks, sculptures, jungle gyms, even an obelisk, giving one the impression that it is mainly a recreational area for people, which was admittedly the original vision for the park. Indeed, for many New Yorkers, it is a beloved backyard, an oasis in the bustling, concrete metropolis. Yet, as Pale Male has shown us, it is also so much more.

According to the Central Park Nature Conservancy, it provides an important resting place for over 275 species of migrating birds, making Central Park a vital stop on the Atlantic flyway. Year round,

Central Park affords habitat to a diverse range of mammals, reptiles, birds, amphibians, fish, spiders and insects. Some inhabitants, such as rats, raccoons, pigeons, and geese, are considered quite common in the area, while others, including screech owls, herons, bats, red-tailed hawks, rabbits and turtles, are not; their unexpected presences lend evidence to the park's complex heterogeneity, which

defies its simple categorization as "natural" or "artificial."

While Central Park is maintained by a legion of horticulturalists, gardeners, landscape architects, arborists and engineers, equally important are the countless invertebrates filling the roles of soil conditioners, pollinators, detritivores, and decomposers, to name but a few. Indeed, renowned biologist E.O. Wilson once proclaimed: "If human beings were to disappear tomorrow, the world would go on with little change. But if invertebrates were to disappear, I doubt that the human species could last more than a few months." Yet, unless one is already keenly attentive to it, much of this nonhuman agency is unfortunately overlooked. Tourists and New York residents alike typically miss the park's ever-present wildness and fail to appreciate its more chaotic elements. At first glance, Central Park appears exceptionally orderly, managed and controlled, yet it is replete with subtle chaos, spontaneous growth and various products of nonhuman agency.

Likewise, the Bronx, Queens, Long Island and Staten Island host many unexpected residents, each playing a role in the local urban ecosystem. While many people celebrate the presence of animal neighbors, not all New Yorkers welcome urban wildlife; we all, however, unwittingly contribute to their existence here, both through the design of urban structures and spaces and through the great quantity of food waste made available in trash cans, dumpsters, gutters, and subway tracks daily. Over the decades, human developments have caused tremendous disruption to local ecosystems and displaced countless species of plants and animals, to say the least. Nature abhors a vacuum, however, and, consequently some have adapted to the new conditions, while other pioneering species have found ways to move in, survive and thrive here. They have found new kinds of urban habitat and developed ways



Pale Male (right) with friend, perched on a Fifth Avenue building, overlooking Central Park.

CREDIT: WIKICOMMONS

Continued on page 8

New York Wildlife continued from page 7

to live with humans, who ignore them, at best, or are downright hostile, at worst. Small fortunes are spent by the city trying to eradicate rats, cockroaches and other animals categorized as "pests," but they, too, should be recognized as vital parts of this novel urban ecological system.

Understanding human roles in urban ecosystems and issues of human-animal cohabitation is increasingly urgent given the rapid urbanization occurring worldwide and the equally rapid sprawl that accompanies it, decimating biodiversity and the small percentage of intact peri-urban and rural habitat remaining. These trends suggest that if we are to continue living as one species among many, we must, like them, adapt to sharing urban spaces. As such, much research in animal geography seeks to understand human-animal relations, interactions and conflicts, how and where they occur and why.

Animal Geography at the 2012 AAG Annual Meeting

With "Bringing the Animals Back In," a 1995 special issue of *Environment and Planning D: Society and Space*, the field of animal geography emerged and markedly distinguished itself from biogeography by turning much needed attention to animals in urban environments. Moreover, it brought those considered "tamed" and "domesticated" into the sphere of animals worthy of serious investigation, which was formerly reserved for wildlife in wild places. The issue, guest edited by Jennifer Wolch and Jody Emel, acknowledged the general exclusion of animals from human geography, ranging historically from

total absence to token presence, in which animals were included merely for their utility to humankind as objects and metaphors. Wolch followed up with a landmark paper, *Zoopolis*², and much important work has since queried animals in captivity, in industrial agri-business, in domestic and public places, such as homes and dog parks, in socio-political and economic



Some unexpected wild residents of Central Park.

networks, and in situated configurations of animals and humans throughout history.³ And the field is growing in exciting ways.

This February, in New York City, the AAG Annual Meeting will see ten sessions sponsored by the Animal Geography Specialty Group. Among them is "City Habitat: Urban Ecologies and Ethical Cohabitation," which considers the city as habitat for a diverse array of animals, including humans, and investigates the kinds of encounters that occur in these spaces of cohabitation. Papers in this session explore issues ranging from marginalized spaces and species, such as scavenger species, to more domestic living arrangements and the animals we live with wittingly and otherwise, and how all these

interactions actively shape urban spaces. Everyone at the Annual Meeting will also have a chance to go out and see firsthand some of the many winter birds residing in Central Park, perhaps even catch a glimpse of Pale Male himself, by joining Cathy Cooper and Gil Schrank on their birding and nature walk fieldtrip, beginning at 7:00 a.m. on Sunday, February 26th. And, who knows who else may be spotted as attendees traverse midtown during the conference? New York's "wildest" residents are as lively and surprising as the city itself. ■

Traci Warkentin
Hunter College, CUNY
twarkent@hunter.cuny.edu

Traci Warkentin is an Assistant Professor in the Department of Geography at Hunter College, City University of New York, and a member of the advisory board for the CUNY Institute for Sustainable Cities.

Notes

¹Sullivan, Robert. 2010. The concrete jungle: The city as ecological paradise. *New York Magazine*, September 20, 2010: 36-41 & 98-99.

²Wolch, Jennifer. 1996. *Zoopolis*. *Capitalism, Nature, Socialism* 7 (2):21-47.

³See, for example: Wolch, Jennifer and Emel, Jacque (eds.). 1998. *Animal geographies: Place, politics and identity in the nature-culture borderlands*. London: Verso; Philo, Chris and Wilbert, Chris (eds.). 2002. *Animal spaces, beastly places: New geographies of human-animal relations*. London: Routledge; Hincliffe, Steve, and Whatmore, Sarah. 2008. Living cities: Towards a politics of conviviality. In *Environment: Critical essays in human geography*, eds. K. Anderson and B. Braun, 555-570. London: Ashgate.

Guide for Newcomers to the Annual Meeting

www.aag.org/newcomers

The AAG Annual Meeting is the largest geography conference in the world. With so much going on and so many opportunities available, the Graduate Student

Affinity Group has created a guide to help newcomers make the most of their meeting experience. This helpful guide is available online at www.aag.org/newcomers.

Washington Monitor

Cuomo Aide, Congressional Staffers to Highlight Education Policy Session

I am looking forward to seeing many good friends at the AAG Annual Meeting in New York City – and I also hope to be able to make several new acquaintances. If you are going to be at the meeting, please join us at a featured session on the status of and efforts underway regarding K-12 geography education funding and legislation.

This special K-12 Policy session for the Annual Meeting has been scheduled for 12:40 p.m. – 2:20 p.m. on Monday, February 27, 2012, and will be held in Concourse G on the Hilton New York's Concourse Level. The participants are:

- Myself, serving as Chair
- **Saul Cohen**, Regent, NY State Education Department & Former President, AAG
- **David Wakelyn**, Deputy Secretary for Education, Office of Governor Andrew Cuomo
- **Danny Edelson**, Vice President for Education, National Geographic Society
- **Minna Elias**, New York Chief of Staff, Office of Congresswoman Carolyn Maloney
- **Wendy Gellman**, Senior Counsel & Senior Advisor for Outreach and Community Affairs, Office of U.S. Senator Kirsten Gillibrand

If you're unable to join us on the 27th, I hope you will still find me to say hello at the AAG's booth or at some other event. And good luck to each of you on your presentations and other activities during the annual meeting!

AAG Resolution Garner Additional Support

The "AAG Resolution Supporting K-12 Geography Education" has continued to garner high-level support in recent weeks. The document highlights the importance of geography education as a critical need in today's rapidly-globalizing world and as an essential training tool for a diversity of fast-growing employment sectors. Below is a partial list of senior government officials and high-profile organizations that have joined the AAG in asserting the need for federal support of K-12 geography. In addition to this list, the resolution has been endorsed

by over a dozen incumbent governors, key private-sector supporters, and dozens of other national organizations and groups. We thank all of the supporters of the document!

U.S. Secretaries of State

The Honorable Madeleine K. Albright, Secretary of State, 1997-2001

The Honorable James A. Baker III, Secretary of State, 1989-1992

The Honorable Henry A. Kissinger, Secretary of State, 1973-1977

The Honorable George P. Shultz, Secretary of State, 1982-1989

U.S. Secretaries of Defense

The Honorable William S. Cohen, Secretary of Defense, 1997-2001

The Honorable Robert M. Gates, Secretary of Defense, 2006-2011

Senior Government Officials

The Honorable Timothy E. Wirth, former U.S. Senator and Under Secretary of State for Global Affairs; current President of United Nations Foundation & Better World Fund

The Honorable Bill Richardson, Governor of New Mexico, 2003-2011; also, former U.S. Ambassador to UN and former U.S. Secretary of Energy

General Charles F. Wald, USAF, Ret.

Vice Admiral Dennis McGinn, USN, Ret.

Vice Admiral Robert Murrett, USN, Ret.

Leading Environmental Organizations

American Council On Renewable Energy: ACORE is dedicated to building a secure and prosperous America with clean, renewable energy and provides a common educational platform for a wide range of interests in the renewable energy community.

Environmental Defense Fund: With a membership of over 700,000, EDF's mission is to preserve the natural systems on which all life depends.

The Jane Goodall Institute: JGI is a global leader in chimpanzee behavioral research and protection, community-centered conservation, and youth service.

National Council for Science and the Environment: NCSE works to improve the scientific basis for environmental decision-making.

U.S. Green Building Council: USGBC promotes sustainability in how buildings are

designed, built, and operated. The Council developed the LEED green building rating systems.

College Affordability: Major Administration Goal in 2012

President Obama recently laid out policy goals promoting college affordability in his State of the Union (SOTU) address on January 24 and in a major speech at the University of Michigan three days later. The issue promises to be a 2012 priority for the Administration – both to boost economic growth and opportunity nationwide and to appeal to the younger voters who were so critical to the President's electoral coalition in 2008.

In the SOTU, Mr. Obama staked out a clear position: "Let me put colleges and universities on notice – if you can't stop tuition from going up, the funding you get from taxpayers will go down." This bold, but unspecific, assertion was clarified in his remarks in Ann Arbor, during which he noted that for the first time in American history, student-loan debt has surpassed credit card debt. The President also laid out some clear policy goals:

- He aims to revamp the Federal financial aid system to tie eligibility for certain aid programs to individual institutions' ability to promote affordability.
- Mr. Obama would like to raise the amount available for Federal Perkins Loans from \$1 billion to \$8 billion. Perkins Loans are a government-subsidized, need-based aid program that carry a fixed interest rate and allow for delayed repayment.
- The Administration also aims to create a \$1 billion grant program, under which states would compete for funds by working to reduce college costs.
- The President would like to offer a smaller grant competition for individual higher-education institutions that boost the value of their offerings.

All of these initiatives would require Congressional action, so the probability of quick reform is low. But college affordability promises to be a significant topic of debate in 2012. ■

John Wertman
jwertman@aag.org

Profiles of Professional Geographers

One of the major book publications stemming from the AAG's current EDGE-Phase 2 will be *Practicing Geography: Careers for Enhancing Society and the Environment*. Edited by Michael Solem, Kenneth Foote and Janice Monk, *Practicing Geography* will feature contributions from a diverse group of authors from the private and public sectors offering perspectives on career opportunities for geographers in business, government, and nonprofit organizations. The book will also explore opportunities in education, working internationally, freelancing and consulting, and it will offer perspectives on issues of particular interest to students (e.g., getting the most out of internships) and current professionals (e.g., networking and balancing work and home life). Many chapters will feature profiles highlighting the work of professional geographers, such as the profile of Jason Welborn below. *Practicing Geography* has recently been published by Pearson Prentice Hall.

Jason Welborn

Biological Science Technician, Tumacácori National Historical Park
Tumacácori, Arizona

Jason Welborn is no desk jockey – the former backcountry crew leader, outdoor guide, and park ranger has literally taken the road less traveled. Since completing his master's degree in 2004, Jason has had a successful and exciting career that has taken him from the U.S.-Mexico border to Alaska. "I always wanted to have a job where I could work outdoors," he recalls. Today, he's doing just that as a biological science technician for the U.S. National Park Service.

Jason's first extended backpacking trip to the Appalachian Trail stimulated his early interest in geography by introducing him to new natural environments as well as different people from diverse backgrounds. Although he majored in French as an undergraduate at the University of Southern Mississippi, he minored in geography, and his graduate studies at the University of Arizona focused on land management, quality of life and political ecology, reflecting his interest in the intersection of culture and land use.

After graduation, Jason secured a job as a research assistant with the Sonoran Institute, a non-profit organization that supports conservation and restoration efforts in the western U.S. He then moved into the private sector, working as a land surveyor on the Mexican border before being laid off as a result of the recession.

"I didn't want to become 'The Man'" Jason jokes, but the uncertain economic climate encouraged him to consider federal employment. After spending the next few years in a series of short-term positions (including a summer gig as a park ranger), Jason finally found the job security he was looking for when he was offered his current post in May of 2010.

A native of Mississippi, Jason now lives in southern Arizona, where he is the sole member of the natural resources staff at Tumacácori National Historical Park. Although his job title suggests that he is a biologist by training, Jason considers himself first and foremost a geographer: "As a geographer, one can do a number of different jobs without 'geographer' in the title," he points out.

Despite having to learn a great deal about the biology of the park's resident species, Jason believes his background in geography prepared him well for the demands of his job, which requires a thorough knowledge of natural systems as well as the ability to translate that understanding to the public in a culturally sensitive manner. "The most fulfilling part of my job is being able to educate both school

children and adults about the history and ecology of the park's landscape in a non-academic, tangible way."

While geographic techniques such as mapping and GPS skills are important for his field work, Jason believes clear, succinct writing is equally crucial. "Employees need to be able to quickly get through reports and remember them. Busy people appreciate efficiency – when you save someone time, they notice."

For anyone considering a career like his, Jason advises talking to professionals employed in the field, pursuing internships to get experience and build relationships, and remaining open to doing work that might seem somewhat peripheral to one's formal training. Although the availability of jobs with federal conservation agencies fluctuates with the political balance of power, he predicts that the field will continue to grow. "I'm seeing a shift in popular perception toward a recognition of the need to conserve our resources. I think there will always be a demand for people to help manage our natural systems." ■

– Mark Revell
mrevell@aag.org



Welborn

More profiles of professional geographers are available at www.aag.org/careerprofiles.

Call for Participation:

Geospatial Frontiers in Health and Social Environments

In connection with AAG's ongoing Initiative for an NIH-Wide GIS Infrastructure,¹ the AAG has received a grant from the National Institute of Health's (NIH) crosscutting OppNet Program (<http://oppnet.nih.gov>) to support a series of three scientific symposia that will help shape NIH research agendas related to Geospatial Frontiers in Health and Social Environments. The symposia will include presentations and interactive discussion of key research, technical and policy challenges to the creation of a national geospatial infrastructure for health research. These symposia also will build on an AAG-NIH Workshop on Geospatial Infrastructure for Medical Research that was held in February 2011, resulting in key report entitled, *Establishing an NIH-wide Geospatial Infrastructure for Medical Research: Opportunities, Challenges, and Next Steps*.²

Organizers are seeking broad interdisciplinary participation in the Geospatial Frontiers symposia, drawing from geography, GIScience, biomedical science, public health research, and computer science, as well as other social and computational sciences. Senior NIH officials will also participate in the symposia.

Symposia Schedule

The first two symposia are scheduled for April 27-28, 2012 and July 27-28, 2012. The April symposium will be held on the campus of Howard University in Washington, DC and will focus on the theme *Spatio-temporal Analysis for Health Research*.

The July symposium will be held in San Diego and focus on *CyberGIS: Implications for Establishing an NIH-wide GIS*. The final symposium, to be held in early 2013, will build on the first two symposia, and result in an innovative research agenda to enhance the integration and sophistication of GIScience-based approaches in health and environment research.

Douglas Richardson, the AAG's Executive Director, serves as PI for this project. Senior personnel include Michael Goodchild, University of California at Santa Barbara; Mei-Po Kwan, Ohio State University; Jonathan Mayer, University of Washington; and Sara McLafferty, University of Illinois at Urbana-Champaign.

To Participate

If you are interested in participating in either the April or July symposium, please email your CV and a brief biosketch (200 words or fewer) to Jean McKendry (jmckendry@aag.org). In your email, please identify the symposium in which you wish to participate. Please be aware that the total number of participants in each is limited to 25, and that organizers may not be able to accommodate all expressions of interest.

For more information about the Geospatial Frontiers in Health and Social Environments Project, contact Douglas Richardson, drichardson@aag.org. For more information about AAG's health initiatives please visit www.aag.org/health. ■

¹D. Richardson, "The AAG Initiative for an NIH-Wide GIS Infrastructure" (*AAG Newsletter*, March 2011), and "Crossing Borders: A National GIS Infrastructure for Health Research" (*ArcNews*, Summer 2011).

²http://www.aag.org/galleries/project-programs-files/NIH_GIS_Report.pdf

New AAG Book Aims to Improve Career Preparation

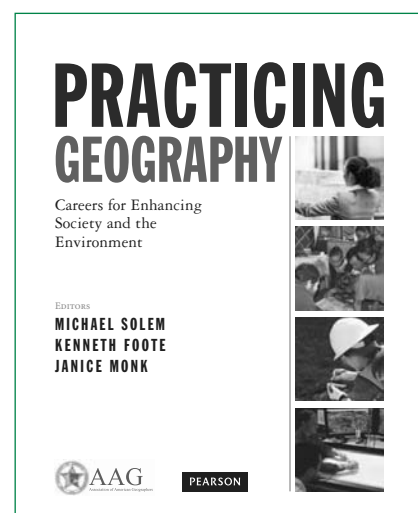
Whether you are just beginning as a major, taking classes toward a GIS certificate, working on an advanced degree, or considering a career change at a different point in your life, geography can lead to exceptional career opportunities. *Practicing Geography: Careers for Enhancing Society and the Environment* is a comprehensive new resource from the AAG and Pearson, designed to prepare geographers for careers in business, government, and non-profit organizations.

Developed by the AAG's EDGE project with support from the National Science Foundation, the book examines workforce needs, expectations, and core competencies in professional geography, with many chapters offering expert advice and insightful analyses on topics such as networking, managing work-life rela-

tionships, and professional ethics. Dozens of professional geographers are profiled in the book to illustrate the exciting range of career opportunities in geography today.

The AAG's Jobs and Careers website (www.aag.org/careers) has recently been updated with new resources for career information and planning. The website provides additional profiles of professional geographers along with a broad toolkit of data, tip sheets, and other resources useful for the job search and exploring career opportunities.

Practicing Geography is available through Pearson in paperback and e-book formats, and can be ordered online at www.pearsonhighered.com. For additional information about the book and the AAG's EDGE project, visit www.aag.org/edge. ■



AAG's Rio+20 Youth Campaign Marks Tenth Anniversary of MyCOE

The AAG is marking the 10-year anniversary of the My Community, Our Earth (MyCOE) program with a new call for youth around the world to submit their sustainable development projects for display at the United Nations Conference on Sustainable Development, to be held June 20-22, 2012, in Rio de Janeiro, Brazil. The meeting is also known as Rio+20, marking the twenty-year anniversary of the UN Earth Summit held in Rio in 1992.

The projects will showcase the power of geography and geographic technologies to address climate change, the green economy, food security, risks, hazards and vulnerability, and other themes. This new AAG initiative celebrates a decade of activities led by the AAG as Secretariat of the My Community, Our Earth: Geographic Learning for Sustainable Development (MyCOE) partnership with the United Nations (UN).

Existing, completed or new projects are encouraged and may be submitted according to the detailed guidelines at www.aag.org/mycoesubmit.

Projects should be conducted by or with youth, from middle school to secondary school to undergraduate or graduate level students in either formal or informal educational settings. Any project that uses geographic



MyCOE students collaborate on a project.

methods or analysis and maps to address sustainable development issues is appropriate for a MyCOE project. A geoportal toolkit to help youth find resources for projects has been launched at www.mycOE.org.

All submissions will be reviewed, displayed and later posted online for public viewing. For those received by June 1, 2012, the most popular projects and others selected by our international committee of experts will be showcased during the UN Rio+20 Conference in June and will receive special recognition and prizes.

MyCOE was established in 2001 in conjunction with the United Nations World Summit for Sustainable Development in Johannesburg. MyCOE provides geographic perspectives, learning resources and technological tools to youth and encourages young people around the world to ask and develop answers to pressing global issues in their own local communities. Over the past 10 years, youth around the world have developed over 500 sustainable development projects in their communities as part of this initiative. Inquiries welcomed to mycoe@aag.org. ■

China's Journal of Geographical Sciences Strengthens Academic Exchanges

Co-sponsored by the Geographical Society of China (GSC) and the Institute of Geographic Sciences and Natural Resources Research, Chinese Academy of Sciences (CAS), the *Journal of Geographical Sciences* aims to strengthen academic exchanges between Chinese geographers and those working in other countries, and to offer a publication for exchanging the academic ideas of geographers all across the world. Its editor-in-chief is Professor Zheng Du,

Academician of the Chinese Academy of Sciences.

The *Journal of Geographical Sciences* focuses on the natural sciences and publishes articles relating to physical processes and spatial patterns of the earth's surface, physio-geographical elements and their interaction, global change and its regional response, characters and management of natural resources, landscape ecology and environmental construction, remote sensing, cartography, and geographic

information systems and their applications in geographical research. The journal's editors welcome submissions from different parts of the world.

Abstracts are indexed widely in international databases and indices.

Guidelines for authors and more information about the *Journal of Geographical Sciences* may be found at www.geogsci.com. Manuscripts may be submitted online at www.geogsci.com or by e-mail to jgs@igsnnr.ac.cn. ■

The International Reception will be held in the Exhibit Hall at 7:30 p.m. on Saturday evening, February 25.

Summer Workshop for Graduate Students & Early Career Faculty

June 10-16, 2012, University of Colorado at Boulder

Registration has begun for the 2012 Geography Faculty Development Alliance (GFDA) workshop for graduate students and faculty who are beginning their careers in higher education – instructors, lecturers, assistant professors, and other untenured faculty. The workshop is open to faculty from all types of teaching and research institutions inside and outside the U.S. The workshop, sponsored by the Association of American Geographers, will touch on a wide range of issues involving teaching and learning, particularly those revolving around designing effective courses, issues of diversity and inclusion, and active pedagogy. The goal will be to help participants learn to balance the many responsibilities of academic life and to understand how their teaching, research, service, outreach, and personal lives intersect and interconnect. Most participants in past workshops have built lasting networks among themselves and with workshop leaders.

Graduate students and faculty from all institutions and departments are invited to attend. Some teaching experience is useful. Readings and exercises will include selections from Michael Solem, Ken Foote & Janice Monk (eds.), *Aspiring Academics: A Resource Book for Graduate Students and Early Career Faculty* (Prentice-Hall, 2009) and Robert Boice, *Advice for New Faculty Members* (Allyn and Bacon, 2000).

Discussion Themes

Emphasis will be placed on those topics frequently mentioned as the greatest sources of stress in the first years of a faculty appointment. These will include developing significant learning experiences for your students; career planning, time management; getting the most out of academic conferences; ethics in research, teaching, and advising; the nuts-and-bolts of writing and publishing; preparing a CV, job search and interviewing; promoting collegiality; prepar-

ing for the tenure process; and balancing personal and professional lives.

Dates and Times

The workshop begins at 7:00 p.m. on Sunday, June 10 and ends at 10:15 a.m. on Saturday, June 16. An optional, free field trip into the Rocky Mountains to the Continental Divide will be available on Saturday afternoon for those wishing to stay until June 19.

Cost, Registration, and Accommodations

To register, visit <http://www.aag.org/gfda> and follow the links to "Early Career GFDA Workshop" before selecting "Register to Attend." You do not need to be a member of the AAG to register for the workshop and enter the website. Follow the instructions to "Sign Up" for a temporary password if you are not an AAG member. Enrollment is on a first-come, first-served basis starting first with the waiting list from last year.

The registration fee of \$1,150 includes a single dorm room, breakfasts, lunches and refreshments, two dinners, supplies, meeting rooms, computer network and printing access, graduate student support staff, and support for the workshops and teaching staff leaders. Often participants' home departments or colleges pay all or part of the workshop cost, so please check with your chair, advisor, or dean about fellowship opportunities. For participants wishing to make their own housing arrangements in Boulder, the registration fee is \$700 excluding dorm room and breakfast, but including all other activities. *Participants are responsible for making their own travel arrangements.*

Spouses and children are also welcome to attend. Accommodations are available at the following rates: 1) \$350 for spouse, to cover double room, including meals; 2) \$200 for each child over 7 years of age for room, including meals, but no additional room or meal charge of children under 7; 3) \$160 for each child in daycare during the

workshop, Monday through Friday, 8:00 a.m. to 5:00 p.m. Although you should pay your workshop registration through the AAG website, you will be billed separately for family members and daycare in May when these arrangements are finalized at the University of Colorado.

A minimum of twenty-five participants are needed to meet the costs of the workshop. If fewer are enrolled as of May 2, the workshop may be cancelled and all funds returned to participants.

The AAG's Department Leadership Workshop will also be held in Boulder from June 16-18. Participants in both workshops will meet and work together in some sessions.

More Information

For further information about the workshop please contact either of the co-leaders: Professor James W. Harrington, Jr. (jwh@u.washington.edu), Department of Geography, University of Washington or Professor Ken Foote (k.foote@colorado.edu), Department of Geography, University of Colorado. The workshops were begun in 2002 with the support of the U.S. National Science Foundation. See www.colorado.edu/geography/gfda/gfda.html for more information.

The University of Colorado is located along the scenic Front Range of the Rocky Mountains. Boulder has an excellent system of hike and bike trails leading from campus to many local mountain parks and open spaces. The Denver regional bus system links Boulder directly to Denver International Airport and downtown Denver. Rocky Mountain National Park is within easy driving distance of campus. Many participants arrange to spend a few extra days in Colorado before or after the conference to travel or camp in the Rockies. Visitor information is available from www.boulder.coloradousa.com, www.explore-rocky.com, and www.colorado.com. ■

AAG Forms New Specialty Group: Geographies of Food and Agriculture

The AAG has announced the formation of a new specialty group to bring together association members with mutual interests in the geography of food and agriculture. The creation of the Geographies of Food and Agriculture Specialty Group (GFASG) resulted from a growing interest in many interrelated topics involving food and agriculture over the past several years. That groundswell of interest led to a panel discussion at the 2011 AAG Annual Meeting in Seattle organized by Daniel Buck (University of Oregon) and Garrett Graddy (American University), and chaired by Lindsay Naylor (University of Oregon), which resulted in the creation of the GFASG.

"As the study of food and agriculture cuts across the discipline, we hope this new AAG specialty group will facilitate collaboration between scholars from multiple sub-disciplines," Naylor told the *AAG Newsletter*.

Its twofold mission is to create networking opportunities for students and faculty who study food and agricultural geographies and to advance research on these topics.

"Over the last few years there have been nearly 150 food- and ag-related papers at each of the AAG Annual Meetings," said Gina

Thornburg (Kansas State University), who served on the Seattle panel. "The panelists hope that this new group will make it easier for scholars to organize their conference activities and to network with each other."

The GFASG will facilitate the sharing of ideas among its members and others; stimulate research and partnerships; and provide awards to support members' research. Additionally, the GFASG will encourage, facilitate, and sponsor paper sessions and discussion panels at AAG meetings.

If you would like to become a member of the GFASG, you may either select it as one of your specialty groups when you renew your membership on the AAG website or, if you are in the middle of your membership term, send an email with your request to membership@aag.org. Annual GFASG dues are \$5 for professionals and \$1 for students.

Others who served on the Seattle panel included Daniel Block (Chicago State University), Easther Chigumira (University of Oregon), Margaret FitzSimmons (University of California, Santa Cruz), Jesse McEntee (Cardiff University), and Jason Moore (Umeå University).

Interim GFASG coordinators Naylor (naylorja@uoregon.edu) and Thornburg

(gkt@ksu.edu) said they are grateful to AAG staff (in particular, Adam Thocher, Oscar Larson, Patricia Solís, and Candida Mannozi) for their guidance and stewardship through the specialty group creation process. The effort was also supported by AAG members who signed a petition or wrote letters of support to create the GFASG.

GFASG's first business meeting will be held at the 2012 AAG Annual Meeting in New York on Monday, February 27, from 11:50 a.m. to 12:30 p.m. in Gramercy Suite A, 2nd Floor, of the New York Hilton Hotel.

The GFASG is also co-sponsoring two AAG field trips scheduled for Friday, February 24: "Challenges and Opportunities for Agriculture in a Rural-Urban Fringe Area" (an all-day trip to a farm and a winery in eastern Pennsylvania), and the "Queens County Farm Museum" (a half-day trip to the longest continuously worked farm in New York state; museum staff will give tours of the farm and farmhouse). Check the AAG program for cost, transportation, and registration details, or see www.aag.org/annualmeeting. Field trips may also be added on site at the AAG Annual Meeting, based on availability. ■

Nominations Invited for AAG Honors

Deadline for nominations: June 30, 2012

The AAG Honors Committee invites nominations for AAG Honors to be conferred in 2013. AAG Honors are awarded in recognition of outstanding contributions to the advancement or welfare of the profession in six categories: Lifetime Achievement Honors, Distinguished Scholarship Honors, Distinguished Teaching Honors, Ronald F. Abler Distinguished Service Honors, Gilbert Grosvenor Honors for Geography Education, and Gilbert F. White Distinguished Public Service Honors.

Normally no more than one award will be made in each category of AAG Hon-

ors. No more than six individuals may be recommended for AAG Honors in a single year. In addition to honors, the committee may recommend a Publication Award and a Media Achievement Award each year. Nominees must be AAG members if they are residents of the United States; if they reside elsewhere the membership requirement is waived. In some cases professionals from other disciplines or professions are eligible for consideration. Geographers or other professionals previously honored may be nominated again for distinction achieved since their first awards.

The deadline for nominations is **June 30, 2012**. See the handbook section of a recent issue of the *AAG Guide to Geography Programs in the Americas* for a complete list of past honors award recipients or consult the AAG website at www.aag.org/honors.

Apply: Please submit a nominating letter and the candidate's CV to grantsawards@aag.org. Digital submissions are preferred. Alternatively, hard copies may be faxed (202-234-2744) or mailed to: AAG Honors, Association of American Geographers, 1710 Sixteenth Street NW, Washington, DC 20009-3198.

NEW YORK! NEW YORK!! (but next year, Los Angeles!!!)

I spent part of January poolside in Palm Springs, enjoying real sunshine. At the mall, movie theaters, restaurants, and even on sidewalks I was pursued by the sound of Frank Sinatra belting out the same standard from his repertoire: "New York, New York." I imagine that local retailers were targeting refugees and retirees from a freezing Manhattan, and certainly there were lots of people penciling *The New York Times* crossword over their breakfast bagels. But truth be told, most of the visitors seemed to be bleached Canadians (aka "snowbirds") doing their utmost to acquire third-degree burns before migrating back to the Great White North.

The Grids of New York

It's hard to imagine a place less like New York City than the cluster of settlements in California's Coachella Valley, where most of the "towns" are built around golf courses. Manahattan – which is what most outsiders have in mind when they refer to New York City – is defined by its endless grid, which makes it remarkably easy to navigate but strait-jackets the wider flights of urban imagination favored by psychogeographic explorers. Not everyone sees it this way, of course, and if you have time you might pop in to the Museum of the City of New York City, which is currently showing a panegyric to Manahattan's orthogonal orthodoxy from 1811 to the present, "The Greatest Grid" (www.mcny.org).

Most people have little difficulty in grasping the urban ecologies of Manhattan. The monumental grid is contained within a narrow peninsula hemmed in by the Hudson and East Rivers which themselves provide edges as well as enticing prospects of what lies beyond (the New Jersey Turnpike!); the network of bridges and tunnels, seen from above, appear to support the entire urban enterprise at the center of its web; but the city's true skeleton is the subway system, even though its disconnect from the surface

dweller's mental map can be disorienting. Once you've acquired a minimal vocabulary pertaining to the famous districts and neighborhoods (uptown, mid-town, and lower Manhattan will do for a start) you are set to venture forth (or see the article beginning on page 1 of this issue).

As a graduate student University of Pennsylvania, I absolutely loved New York City. My regular Friday ritual involved a late-night bus from Philadelphia to hook into the city's energies, its gorgeous architecture and generous cultural cornucopia. I first saw the unforgettable Houghton Shahnameh at the Met, spending a small fortune to acquire a hardback catalogue. Years later, my affection for New York began to unravel largely because of Los Angeles.

The Ecologies of Los Angeles

When I first came to Southern California, it made no sense to me. It was Orange County during a blisteringly hot December (I know, I know, not the smartest place to begin). Plastic reindeer, shimmering in the heat, cavorted across the rooftops of terracotta bungalows. It was a different planet. During a subsequent visit, I discovered the Santa Monica bus lines and the beaches. But it was Englishman Reyner Banham's book on *Los Angeles: Architecture of the Four Ecologies* that provided me with an enduring key to understanding the city. Banham swooned about *surfurbia*, his term for the beach cities; *autopia* (the freeways) which he compared with the boulevards of Haussmann's Paris; the *foothills* (Bel Air, Beverly Hills, etc.), where the financial and topographical contours exactly corresponded; and the *plains*, thickly carpeted by infinite sprawl.

Banham loved L.A. because it broke the rules. Now, four decades after his book was published, he would still get a kick out of the city, but recognize the need to expand his classification to take account of vast changes. He would include Tijuana because L.A. is also a Mexican border city,

and find a prominent place in his revision for the Inland Empire deserts. He would revel in the *mestizaje* urbanism of L.A.'s phenomenal demographic diversity. He would be gobsmacked by the proliferation of Southern California's artistic, intellectual and cultural scenes, but grieve over L.A.'s status as the homeless capital of the U.S. Even though Banham refused to make any claims about L.A.'s wider lessons for other cities, he might agree that L.A. has by now altered the ways we understand cities everywhere.

2013 AAG Annual Meeting

At this moment, by a quirk of synecopated metaphysics, geographers will conference on consecutive years in two of the world's great cities: New York and Los Angeles. You can prepare now by accumulating your 2012 memories of New York to compare with your kaleidoscopic psychogeography of L.A. in 2013. (Leave the GPS in the hotel. Please.) And take time to anticipate the intellectual provocations likely to be inspired by L.A.: urgent sprawl set against the golden mean of sustainability; the monoliths wrought by real estate oligarchs intent on transforming downtown L.A. into a 24/7 global entertainment spectacle; the multicultural revolutions being wrought by major art institutions as well as a resurgent grassroots; and a dazzling demographics that are literally altering the face of America.

If you are nervous about stepping out of an orthogonal urban world and making the trip to the amorphous Left Coast, rest assured that you can still buy *The New York Times* every day in L.A. You'll have to manage without Frank Sinatra, but there'll be plenty of psychogeographers helping you search for the beach beneath the street. ¡Buena suerte! ■

Michael Dear
Professor of City and Regional Planning
University of California, Berkeley

going into Manhattan were rerouted for track maintenance. As it turned out, getting to the Hilton was easy. Getting home was another story. It involved taking an "express" train past my stop and doubling back on a "local."

So how did it get this complicated? Prior to the current network, the city had privately-owned streetcars, horse-drawn omnibuses, and electric trolleys. (Quick random fact—why were the Brooklyn Dodgers called that? Brooklynites were known as "trolley-dodgers.") There was even a pneumatic pressure train in lower Manhattan from 1870-1873 and elevated trains on the east and west sides of Manhattan. In the early decades of the 20th century, two private companies, the Interborough Rapid Transit (IRT) and the Brooklyn Rapid Transit (BRT), later the Brooklyn-Manhattan Transit company (BMT), ran independent lines connecting the boroughs of Manhattan, the Bronx, Queens, and Brooklyn. In the 1930s, the city completed the Eighth Avenue line and opened the Independent Rapid Transit Railroad (IND), and by 1940, bought the other two rail companies, becoming the sole provider of subway service. This is why there are areas of the city that are underserved and areas with parallel subway lines within a few blocks of each other. This also explains why transferring from one line to another can involve what seems to be a two-block walk (it's because it is, only you are walking underground).

Now for some basics. First, to ride the subway, you need a Metrocard. Unlike most other systems, Metrocards charge per trip, regardless of distance traveled. Each ride is currently \$2.25. You can transfer onto a bus for free within 2 hours of initiating the trip. Metrocards are also used on buses, although buses will accept \$2.25 in coins. If you will be in New York for the entire week and plan to ride the subways and buses extensively, you may want to purchase a 7-day unlimited

Metrocard for \$29. Metrocards are available for cash, credit, or debit at subway stations. Metrocards are only swiped as you enter the turnstile, not again when you exit. If you are participating in a field trip that includes subway travel, a round-trip Metrocard has been included in the cost.

Second, the subways are never referred to by color. As the Japanese tourist (and countless others) discovered, there are three yellow lines, three green lines of one

Third, while just about all buses accommodate wheelchairs and other mobility-assistance vehicles, not all subway stations are accessible. If you are signing up for a field trip that will use the subway, please let the AAG know in advance so we can make other transportation arrangements for you to join the group. The MTA website (www.mta.info) has the information for stations with elevators and which elevators are out of service.

Fourth, the conference includes a full weekend this year, and that is when track maintenance occurs. Before planning a trip via subway on a weekend, check the MTA website to see if there are track repairs and route changes planned that will affect your trip. Also, although the trains run 24/7, some routes change after midnight. It's important to remain flexible and not be afraid to ask a local for help. We reroute confused tourists all the time.

While Staten Island is not accessible by subway, the Staten Island ferry is, and it is one of the best *free* mini-cruises in the city. It offers a great vista of Lower Manhattan and goes past (but not to) the Statue of Liberty. And for train buffs, the MTA's Transit Museum in Brooklyn is a fun spot for adults and children alike.

Despite how it is often portrayed in the media, the subway and bus system is safe, affordable, and a must-do for any geographer coming to New York. Public transportation is the best way to get around the city, especially in late February. So, come to New York and make sure you take at least one trip out of Midtown. ■

Ines M. Miyares
Hunter College

For more information see www.mta.info.



The New York City subway system can be confusing to the uninitiated.

shade, and one of another shade, three red lines, three blue lines, four orange lines plus several others. Routes are referred to by their number or letter, and their direction is given in terms of relative locations. For example, from the Hilton, trains go Uptown/Bronx, Uptown/Queens (minor detail that Queens is actually east), or Downtown/Brooklyn (also east, but via Lower Manhattan). As mentioned earlier, there are local and express routes. *Local* trains and busses stop at every station, while *express* ones only stop at transfer points.

Things to See and Do in New York

An Insiders' List of Favorite Places in *The Big Apple*

There's nothing quite like asking New Yorkers or even transplanted New Yorkers to weigh in on the most *unmissable* sites the city has to offer. There are so many things to do, places to visit and experiences to be had that the task of organizing a list of things that shouldn't be missed can quickly become daunting. In order to make sense of it all, we asked New Yorkers who are also geographers. Below is a short list of favorite places to visit in The Big Apple compiled by the AAG Local Arrangements Committee, whose assistance in organizing the 2012 Annual Meeting has been incalculable. We thank everyone who contributed. Enjoy!

Near the Conference

Algonquin Hotel. 59 West 44th Street between 5th & 6th Avenues. Still serving drinks at the Algonquin Roundtable after all these years. www.algonquinhotel.com.

New York Public Library. 5th Avenue between 40th & 42nd Street. Just go. www.nypl.org.

Rockefeller Center. 30 Rockefeller Plaza. Take a quick ice-skating break or check out the view from the observation deck at the Top of the Rock. www.rockefellercenter.com.

Carnegie Deli. 854 7th Avenue. Best nearby Jewish deli. www.carnegiedeli.com.

A Little Farther Afield

Daily News Building. 220 East 42nd Street between 2nd & 3rd Avenues. Art deco office building (Raymond Hood, architect, 1930). Lobby contains the world's largest interior globe.

Grand Central Terminal. 87 East 42nd Street. Make a point of seeing Grand Central Terminal at least once during rush hour. Plus, angels (or at least constellations) in the architecture, mayhem and hubbub, and good fast food. www.grandcentralterminal.com.

The High Line. Cool preservation project of the historic rail line. Tracks are still visible on the streets from Gansevoort

Street in the Meatpacking District down to West 30th Street. www.thehighline.org.

ABC No Rio. 156 Rivington Street. Known internationally as a center of alternative and oppositional culture. Includes a zine library and a gallery space. Hosts workshops and music/readings/performances regularly. www.abcnorio.org.

Bluestockings Independent Bookstore. 172 Allen Street. Hosts free readings/discussions on an almost nightly basis. www.bluestockings.com.

Economy Candy. 108 Rivington Street. In business since 1937, consider it a cramped museum of sweet treats and old-fashioned candy where you can buy in bulk and find novelties from far off places. www.economycandy.com.

Essex Street Market. 120 Essex Street (at Delancey Street). Historic Lower East Side market. www.essexstreetmarket.com.

Fraunces Tavern. 54 Pearl Street. An American Revolution-focused museum and bar with good beer (and restaurant, too). www.frauncestavern.com.

Katz's Deli. 205 E. Houston Street. <http://katzsdelicatessen.com>.

The Museum of the City of New York. 1220 5th Avenue at 103rd Street. Open Sunday through Friday, 10:00 a.m. – 6:00 p.m., Saturdays 10:00 a.m. – 8:30 p.m.; admission \$10; seniors and students \$6. Current exhibit (until April 15) is "*The Greatest Grid: The Master Plan of Manhattan, 1811-2011*" describing the origination, implementation, and effects of Manhattan's street grid. www.mcny.org.

Staten Island Ferry. Still FREE! And views are stunning. www.siferry.com.

Strand Bookstore. 828 Broadway. 18 miles of books! www.strandbooks.com.

NYC Tenement Museum. 103 Orchard Street on the Lower East Side. Open every day 10:00 a.m. - 6:00 p.m.; admission and guided tours \$22; seniors and students \$17. www.tenement.org.

Yonah Schimmel's Knishes Bakery. 137 East Houston Street. <http://knishery.com>.

Neighborhood Walks in NYC

The promenade in **Brooklyn Heights**. Much filmed, classic stunning views of downtown Manhattan. Wander around the beautiful expensive brownstones, tiny townhouses and deluxe apartment buildings. (Subway: 2,3 to Clark Street or 2,3,4,5 to Borough Hall.)

Park Slope/Prospect Heights/Crown Heights in Brooklyn: Go on Saturday to the farmers' market at Grand Army Plaza, walk into Prospect Park, poke in the grand Art Deco Brooklyn Public Library, walk up Eastern Parkway to the Brooklyn Botanical Garden, and visit the Brooklyn Museum. (Subway: 2,3 to Grand Army Plaza, or start at the museum and the Eastern Parkway/Brooklyn Museum stop. Better yet, take the Q, which goes over the Manhattan Bridge, getting off at Seventh Avenue for Park Slope or at the Botanic Garden stop to start there.)

Louis Armstrong fans should go the **Louis Armstrong House Museum** in Corona, Queens. From there, walk through this now predominantly Hispanic (multiple origins) working-class neighborhood over to Mama's (or Leo's) Italian deli (46-02 104th Street) for famous sandwiches (closed Sunday) or walk a little farther to Tortilleria Nixtamal (104-05 47th Avenue) for homemade Mexican tacos, tamales and sopas. Corona is near Flushing Meadow Park, home of the iconic globe that anchored the 1964 World's Fair.

Broadway. Start at the Strand Bookstore (828 Broadway). Get hot chocolate at City Bakery (3 west 18th St.) or Max Brenner (Broadway between 13th and 14th Streets), or go to Old Town Bar (45 East 18th Street) for beer (not a great selection, but one of the older bars around). Across from City Bakery is Books of Wonder, housing children's books including perfect reprints of Oz books from throughout the series. Wandering north on Broadway takes you through the former novelty district now the setting of upscale home furnishings, including ABC Carpet. Check out the galleries in **Chelsea**. The 20s west of 10th Avenue, mostly from 22nd through 26th Streets, are filled with art galleries. Most closed on Sunday and Monday.

Go to **Williamsburg, Brooklyn**, to take in the hipster concentration and small shops, restaurants, galleries and clubs of this gentrified neighborhood; cast a net wider than Bedford Ave (L to Bedford Avenue) to older Hispanic (predominantly Puerto Rican) Williamsburg and Hasidic Williamsburg and the newly rezoned luxury high rises being built along the former industrial waterfront; neighboring Greenpoint (actually closer to the Bedford area) maintains its Polish community as it also experiences gentrification.

~ by Tamar Rothenberg,
Bronx Community College-CUNY

Continued on page 18

Beyond Manhattan

New York Botanical Garden. 2900 Southern Boulevard, Bronx. Includes the Forest on the Bronx River (some of last remaining native forest in NYC). www.nybg.org.

Brooklyn Museum. 200 Eastern Parkway, Brooklyn. While secondary in NYC, this museum is at least on par with the best museums of most major cities. www.brooklynmuseum.org.

Coney Island. Hop on the D train and head to Coney Island. At the end of the

line, stroll across the street to the beach and boardwalk. The view is beautiful in winter. Take in the historic carousel, roller coaster, and parachute jump. If you're adventurous, have a dog at the original Nathan's.

Red Hook, Brooklyn. A bit of a walk from the subway but worth it. Take the F Train to 4th Avenue and walk over to the river. Stunning views of the Statue of Liberty. See the **Waterfront Museum**. Think quirky, surprising, and fun for kids. www.waterfrontmuseum.org/home.

The Panorama of the City of New York. Largest architectural model in the world, comprising nearly 900,000 buildings including every structure built in NYC before 1992. Located at the **Queens Museum of Art**, next to the **Unisphere** in Flushing Meadows-Corona Park. www.queensmuseum.org/exhibitions. ■

— compiled by Rachel Franklin
Brown University

MOBILE APPS FOR VISITING NYC

AAG Annual Meeting – New York, February 24-28, 2012

The Center for International Earth Science Information Network (CIESIN)/Columbia University has compiled a list of apps that may be useful to AAG members visiting New York for the 2012 AAG Annual Meeting.

General Guides

(note: iOS refers to any mobile Apple device)

Goings On: The New Yorker (iOS)

Free

A guide to New York City culture from the staff of The New Yorker.

The Scoop (iOS)

Free

Events, restaurant, bar, coffee, shopping and "only in NYC" guide from The New York Times.

NYC Way - everything NYC (iOS)

Free

A range of transit and transportation information for city residents and visitors.

New York Subway Map (iOS)

Free

Includes official MTA map, live station and route updates, route planning, and location of nearest station.

NYC Subway KICKMap Lite (iOS)

Free for basic map, \$0.99 for night service map

Simple, scrollable/zoomable subway map (no Internet connection needed).

NYC Mate (Android)

Free

NYC bus, subway, Long Island Railroad, NJ Transit, and MetroNorth train maps/timetables.

NYC Bus and Subway Maps (Android)

Free

Download all bus and subway maps for offline use.

Food and Drink

Yelp (Android, iOS)

Free

Reviews of restaurants, bars, and more.

Opentable (Android, iOS)

Free

Restaurant reservations.

Time Out New York (iOS)

Free

Hundreds of brief reviews and suggestions by neighborhood for dining, drinking, museums, music, nightlife, and other events and sights including free and cheap events.

Tripadvisor (Android, iOS)

Free

Planner, suggestions, and reviews on things to do, restaurants, etc. (especially for things "nearby now").

NYC Truck Food (iOS)

Free

Search for food truck locations nearby or by cuisine.

Happy Hours (iOS)

Free

Happy hour specials by day of the week and neighborhood (crashes a fair bit).

You the Man (iOS)

Free

For those who may have had too much fun at happy hour, this app estimates blood alcohol content, has a subway map, and is able to call the nearest car service/From the NYC DOT.

Points of Interest

MoMA - the Museum of Modern Art (iOS)

Free

Find out about current exhibitions, plan a visit, browse or search the collection, take multimedia tours, and more.

AMNH Explorer — American Museum of Natural History (iOS)

Free

Part custom navigation system, part personal tour guide.

tkts — Broadway and Off-Broadway show times (iOS)

Free

Buy full-price tickets online and find out if half-price tickets are available at the tkts booth in Times Square.

Lincoln Center (iOS)

Free

Complete listing of Center events and performances – includes map, directions, and nearby dining – can't buy tickets online but able to call box office directly.

Night Light NYC (iOS)

Free

What do the colors on the Empire State Building represent?

TreesNY (iOS)

Free

500,000 street (not park) trees in NYC, mapped—click on a tree to see what species it is.

NYC Building History (iOS)

\$2.99

Detailed history of 1500 buildings in four downtown neighborhoods (Tribeca, SoHo, NoHo, and the Meatpacking district).

AAG Field Trips in New York

Consider adding an AAG field trip to your Annual Meeting agenda. Participating in a field trip or excursion is a good way to explore the city and meet colleagues with similar interests. Those listed below all had space available at press time. You can register for a field trip on-site in New York by going to the customer service desk next to AAG Registration. Some workshops also have seats remaining. For availability and to register, check with the customer service desk.

18. Black Rock Forest: Ecological and Geographic Education and Research in the Hudson Highlands

Thursday, February 23, 9:00 a.m. – 4:00 p.m.

Organizer/Leader: Allan Frei, Hunter College Department of Geography

Trip Capacity: 25

Cost/person: \$58 (includes bus transportation)

28. Fresh Kills in Transformation: From Dump to Park

Thursday, February 23, 10:00 a.m. – 2:30 p.m.

Organizer/Leader: Deborah Popper, College of Staten Island and Graduate Center, CUNY, Carrie Grassi, Fresh Kills Park

Trip Capacity: 20

Cost/person: \$5

3. Queens County Farm Museum

Friday, February 24, 8:15 a.m. – 3:00 p.m.

Organizers: Jesse Abrams, Whitman College, Jill Clark, The Ohio State University

Organizer/Leader: Gina K. Thornburg, Kansas State University

Trip Capacity: 25

Cost/person: \$27 (includes admission fees, tasting fees— bring your own lunch and \$5 for public transportation)

Sponsored by the AAG Rural Geography Specialty Group, Geographies of Food and Agriculture Specialty Group

33. Layered SPURA: Spurring Conversations through Visual Urbanism

Friday, February 24, 4:00 p.m. – 6:00 p.m.

Organizer/Leader: Gabrielle Bendiner-Viani, Buscada Projects

Trip Capacity: 25

Cost/person: \$8 (includes handout, bring money for metrocard)

26. Biting the Big Apple

Saturday, February 25, 8:00 a.m. – 8:00 p.m.

Organizer/Leader: Kevin Patrick, Indiana University of Pennsylvania

Trip Capacity: 25

Cost/person: \$120 (includes lunch, admission fees, subway fare)

27. Sopranoland Suburbia

Sunday, February 26, 8:00 a.m. – 6:00 p.m.

Organizer/Leader: Kevin Patrick, Indiana University of Pennsylvania

Trip Capacity: 25

Cost/person: \$87 (includes bus transportation, meals, handouts)

29. Landmarks of Brooklyn's Industrial Waterfront

Sunday, February 26, 12:00 p.m. – 4:00 p.m.

Organizer: Richard E. Hanley, Brooklyn Waterfront Research Center, New York City College of Technology, City University of New York

Trip Capacity: 50

Cost/person: \$70 (includes boat transportation, handouts, narrator)

24. The Backbones of New York: How New York's Infrastructure Came to Be

Monday, February 27, 10:00 a.m. – 2:00 p.m.

Organizer/Leader: Andrew Sydor, Freelance Tour Guide

Trip Capacity: 25

Cost/person: \$39 (includes bus transportation, honoraria)

25. Yankee Stadium Tour Excursion

Monday, February 27, 10:00 a.m. – 3:00 p.m.

Organizer/Leader: Lee Schwartz, US Department of State

Trip Capacity: 30

Cost/person: \$20 (includes admission fee)

15. Science for Sustainable Development: A Tour of the Lamont Campus of Columbia University

Tuesday, February 28, 1:00 p.m. – 6:00 p.m.

Organizer: Robert S. Chen, CIESIN, Columbia University

Co-Leaders: Mark Becker, CIESIN, Columbia University and Elisabeth Sydor, CIESIN, Columbia University

Trip Capacity: 40, depending on bus

Cost/person: \$30 (includes transportation, handouts, afternoon reception)

16. A Night at a Private New York Jazz House with a Private Supper

Tuesday, February 28, 3:00 p.m. – 10:00 p.m.

Organizer/Leader: Rich Quodmine, NYSDOT, Gordon Polatnick, Big Apple Jazz

Trip Capacity: 25

Cost/person: \$160 (includes dinner, jazz show, bus transportation)

See page 21 for the AAG Field Trip Registration Form.

AAG Expands and Enhances Careers Resources

The Jobs and Careers area of the AAG website (www.aag.org/careers) has recently been updated with input from the AAG's Enhancing Departments and Graduate Education (EDGE) Project. Major improvements include the reorganization of content to improve navigation and to make resources and other information easily accessible. In addition, new sections and resources have been added to help students, job seekers, and faculty who want information about geography-related careers and professional development.

The new offerings include a Frequently Asked Questions (FAQ) page with answers to some of the most common inquiries sent to AAG staff; user-friendly "tip sheets" that outline strategies for various aspects of career preparation; bibliographies of AAG-produced careers publications and selected external resources; and careers news and events pages that provide the

latest information about geography jobs and careers. Some existing resources have also been expanded and updated, including salary data and employment trends for geography-related careers and our collection of profiles of professional geographers who work in a wide range of industries and occupations (www.aag.org/careerprofiles). Much of the new content draws from and complements the forthcoming book *Practicing Geography: Careers for Enhancing Society and the Environment*, to be published by Pearson Education in 2012.

"We strongly encourage AAG members to use these materials for their own professional development and to share them with their students and colleagues. We would love to hear their ideas for additional items and suggestions that would help us to further improve this area of the website" said Joy Adams, AAG Senior Researcher and project manager for the

careers website updates. "We are very excited about these developments and hope that our work will benefit geographers at a variety of career stages."

To share feedback on the Jobs and Careers webpages, contact Joy at jadams@aag.org or visit our staff in the Jobs in Geography (JIG) Center during the 2012 Annual Meeting in New York. ■

New Appointments

Northern Michigan University, Assistant Professor, Jonathan Hanes. PhD 2011, University of Wisconsin-Milwaukee.

Key: *New institution, position, name. Degree, year degree granted, granting institution.*

Jobs in Geography (JIG) Center

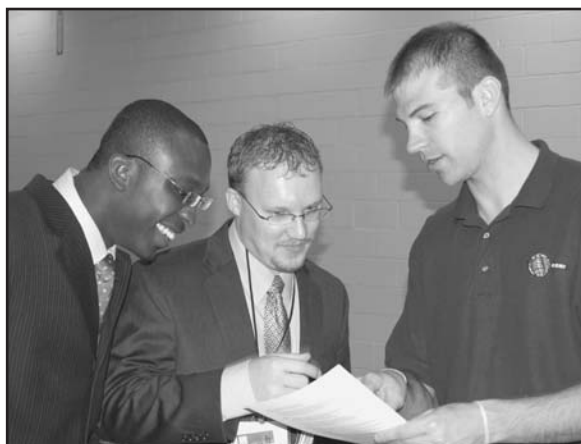
The Jobs in Geography (JIG) Center will be located in the Americas Hall 1 (Hilton New York 3rd Floor) at the 2012 AAG Annual Meeting in New York. The JIG Center will feature numerous job postings in all fields of geography for students and job seekers and an exhibit of available jobs with opportunities to meet with employers. Job seekers will be able to talk with successful geographers and learn about career paths, professions and their experiences. Daily themes will be featured (see schedule below).

JIG Center Hours:

Saturday, February 25, 11:00 a.m. - 4:00 p.m.
(theme: careers in business)

Sunday, February 26, 11:00 a.m. - 4:00 p.m.
(theme: careers in government and nonprofits)

Monday, February 27, 11:00 a.m. - 3:00 p.m.
(theme: careers in academia)



Job seekers meet with employers at the JIG Center.

Annual Meeting Geograms

Look for conference schedule updates and late-breaking additions in daily "geograms" sent to AAG members as emails and also available in hardcopy at the AAG Registration Desk. Conference geograms will be posted online at www.aag.org/geograms.

AAG 2012 ANNUAL MEETING FIELD TRIP/WORKSHOP REGISTRATION FORM (www.aag.org)

Everyone who attends the AAG Annual Meeting must register. **You may use this form if you wish to add events on site, but have already registered for the meeting.** Space is limited for all field trips and workshops. AAG reserves the right to cancel any event with insufficient enrollment. All fees are payable in US dollars, by check, money order, Visa, or MasterCard. Full field trip and workshop descriptions are available online at www.aag.org.

FIRST: _____ M.I. _____ LAST: _____

AFFILIATION: _____

ADDRESS: _____

CITY: _____ STATE: _____ POSTAL CODE: _____ COUNTRY: _____

E-MAIL: _____ DAYTIME PHONE: () _____

I. FIELD TRIPS

	Quantity	Price
1. The Hudson River Valley (2/23)	_____	@ \$118 \$_____
2. Agriculture in Rural-Urban (2/24)	_____	@ \$106 \$_____
3. Queens County Farm (2/24)	_____	@ \$27 \$_____
4. Flushing's Chinatown (2/24)	_____	@ \$5 \$_____
5. Jackson Heights (2/24)	N/A	@ \$15 <u>SOLD OUT!</u>
6. The Gowanus Canal (2/25)	N/A	@ \$15 <u>SOLD OUT!</u>
7. Long Beach (2/25)	_____	@ \$76 \$_____
8. Birding Walk Central Park (2/26)	_____	@ \$15 \$_____
9. Cultural Stones Central Park (2/26)	_____	@ \$42 \$_____
10. Waterways/Commodity (2/27)	_____	@ \$65 \$_____
11. GIS Unit NYC Fire Dept (2/27)	N/A	@ \$10 <u>SOLD OUT!</u>
12. Wines of Slovenia (2/27)	_____	@ \$40 \$_____
13. All Day on Transit (2/28)	_____	@ \$25 \$_____
14. Emergency Operations (2/28)	N/A	@ \$10 <u>SOLD OUT!</u>
15. Lamont Campus Columbia U (2/28)	_____	@ \$30 \$_____
16. Jazz House Excursion (2/28)	_____	@ \$160 \$_____
17. NOAA CREST (2/23)	_____	@ \$0 \$_____
18. Black Rock Forest (2/23)	_____	@ \$58 \$_____
19. Korea Society (2/27)	_____	@ \$5 \$_____
20. Food Cart Midtown (2/27)	N/A	@ \$27 <u>SOLD OUT!</u>
21. New York Public Library (2/24)	N/A	@ \$5 <u>SOLD OUT!</u>
22. The Bronx (2/28)	N/A	@ \$5 <u>SOLD OUT!</u>
23. Lower Manhattan (2/27)	_____	@ \$29 \$_____
24. Backbones of NY (2/27)	_____	@ \$39 \$_____
25. Yankee Stadium Excursion (2/27)	_____	@ \$20 \$_____
26. Biting the Big Apple (2/25)	_____	@ \$120 \$_____
27. Sopranoland Suburbia (2/26)	_____	@ \$87 \$_____
28. Fresh Kills Dump/Park (2/23)	_____	@ \$5 \$_____
29. Brooklyn's Waterfront (2/26)	_____	@ \$70 \$_____
30. Gallery Tour Civil War (2/23)	_____	@ \$0 \$_____
31. Gallery Tour Civil 10am (2/24)	_____	@ \$0 \$_____
32. Gallery Tour Civil 2pm (2/24)	_____	@ \$0 \$_____
33. Layered SPURA (2/24)	_____	@ \$8 \$_____

TOTAL FIELD TRIP FEES \$_____

Return this completed form along with payment to the customer service desk next to AAG Registration at the AAG Annual Meeting, located in the Second Floor Lobby of the Hilton New York.

II. WORKSHOPS

	Quantity	Price
2. Open Source Tools GIS (2/23)	N/A	@ \$26 <u>SOLD OUT!</u>
3. Resume Roundtable (2/24)	_____	@ \$5 \$_____
4. Web Mapping GeoServer (2/24)	_____	@ \$37 \$_____
5. NIH Grantsmanship (2/25)	_____	@ \$0 \$_____
6. Undergraduate Research (2/25)	_____	@ \$20 \$_____
7. Spatial Pattern Analysis (2/25)	N/A	@ \$0 <u>SOLD OUT!</u>
8. Uncork New York (2/25)	_____	@ \$TBD \$_____
9. Regression Analysis (2/25)	N/A	@ \$0 <u>SOLD OUT!</u>
10. AAG ALIGNED (2/27)	_____	@ \$0 \$_____
11. GIS for Educators (2/26)	_____	@ \$32 \$_____
12. Cloud Computing (2/26)	_____	@ \$0 \$_____
13. Viticultural Enological NJ (2/26)	_____	@ \$TBD \$_____
14. ArcGIS Online (2/26)	N/A	@ \$0 <u>SOLD OUT!</u>
15. ArcGIS Web Mapping APIs (2/26)	N/A	@ \$0 <u>SOLD OUT!</u>
16. School Attendance Boundary (2/27)	_____	@ \$23 \$_____
17. Travel Writing AM (2/27)	N/A	@ \$13 <u>SOLD OUT!</u>
19. Low Cost GPS Solutions (2/24)	_____	@ \$19 \$_____
20. Funding NSF/NIH (2/25)	_____	@ \$0 \$_____
21. NSF DDRI Awards (2/25)	_____	@ \$0 \$_____
22. NSF CAREER Awards (2/25)	_____	@ \$0 \$_____
23. NSF Geo/Spatial Sciences (2/25)	_____	@ \$0 \$_____
24. Speed Dating NSF (2/26)	_____	@ \$0 \$_____
25. Soil Water Content (2/24)	_____	@ \$16 \$_____
26. Plants/Canopies (2/24)	_____	@ \$16 \$_____
27. Travel Writing PM (2/27)	_____	@ \$13 \$_____

TOTAL WORKSHOP FEES \$_____

III. GRAND TOTAL (U.S. Dollars Only) \$_____

☐ Check for \$_____ attached (Payable to AAG)

☐ Please charge \$_____ to my VISA/MC (sorry, no AMEX or Discover)

Card # _____

Exp. Date: ____/____/____ Signature _____

Sign-Up for an AAG Field Trip or Workshop Today!

Limited space was still available at press time in several AAG field trips and workshops, to be held in New York at the 2012 Annual Meeting. See the list above or visit the customer service desk at AAG Registration in the Hilton Hotel to learn more and to register. Don't miss the opportunity to participate in a unique local field trip or to improve your skills in a hands-on workshop designed specifically for geographers. For more about the Annual Meeting see www.aag.org/annualmeeting.

Annals of the Association of American Geographers

Volume 102, March 2012, Issue 2

Table of Contents

ARTICLES

Environmental Sciences

Drought-Busting Tropical Cyclones in the Southeastern Atlantic United States: 1950–2008

Justin T. Maxwell, Peter T. Soule, Jason T. Ortegren, and Paul A. Knapp

Scale-Dependent Correspondence of Floristic and Edaphic Gradients across Salt Marsh Creeks

Daehyun Kim, David M. Cairns, Jesper Bartholdy, and Cristine L. S. Morgan

Methods, Models, and GIS

With Numbers in Place: Security, Territory, and the Production of Calculable Space

Reuben Rose-Redwood

Mapping Spaces of Environmental Dispute: GIS, Mining and Surveillance in the Amazon

Samuel J. Spiegel, Carlos A. A. S. Ribeiro, Rodolfo Sousa, and Marcello M. Veiga

Fractality and Self-similarity in the Structure of Road Networks

Hong Zhang and Zhilin Li

Nature and Society

Bridging Political Ecology and STS: A Field Analysis of the Rosgen Wars

Rebecca Lave

Don't Fence Me In: Boundaries, Policy, and Deliberation in Maine's Lobster Commons

Jennifer F. Brewer

For information on AAG Publications, including online journals, the AAG Newsletter, and AAG books and reports, see www.aag.org/publications.

People, Place, and Region

Making a Living the Hmong Way: An Actor-Oriented Livelihoods Approach to Everyday Politics and Resistance in Upland Vietnam

Sarah Turner

Emotional Geographies of Method Acting in Asian American Theater

Amanda Rogers

Neoliberalization of Housing in Sweden: Gentrification, Filtering and Social Polarization

Karin Hedin, Eric Clark, Emma Lundholm, and Gunnar Malmberg

Rethinking the Study of International Boundaries: A Biography of the Kyrgyzstan–Uzbekistan Boundary

Nick Megoran

The Regime of Violence in Socialist and Postsocialist Poland

Michael Fleming

BOOK REVIEWS

Envisioning Landscapes, Making Worlds: Geography and the Humanities.

Stephen Daniels, Dydia DeLyser, J. Nicholas Entrikin, and Douglas Richardson, eds. and *GeoHumanities: Art, History, Text at the Edge of Place.* Michael Dear, Jim Ketchum, Sarah Luria, and Douglas Richardson, eds.

Reviewed by *John Agnew*

The SAGE Handbook of Geographical Knowledge. John A. Agnew and David N. Livingstone, eds.

Reviewed by *Ron Johnston*

Information and Communication Technology Geographies: Strategies for Bridging the Digital Divide. Melissa R. Gilbert and Michele Masucci.

Reviewed by *Marianna Pavlovskaya*

Summer Internships at AAG

The AAG seeks interns for the summer of 2012. Interns participate in most AAG programs and projects such as education, outreach, research, website, publications, or the Annual Meeting. The AAG also arranges for interns to accompany different AAG staff on visits to related organizations or events of interest during the course of their internship. A monthly stipend of \$500

is provided and interns are expected to make their own housing and related logistical arrangements. Enrollment in a Geography or closely related program is preferred but not a prerequisite for these opportunities.

Applicants should forward a resume, brief writing sample, and three references to Candida Mannozi, cmannozi@aag.org.

2012 MARCH

1. NEH residential summer seminars and institutes for faculty. www.neh.gov/projects/summer12.html.

APRIL

1. Davis-Putter Scholarships for Student Activists. <http://dpsf.davisputter.org>.

MAY

15. Society of Woman Geographers (SWG) Pruitt National Minority Fellowship. www.iswg.org.
15. Society for the History of Discoveries Essay Contest. www.sochistdisc.org.

JUNE

1. Ristow Prize in the History of Cartography. www.washmap.org.
30. AAG Honors. www.aag.org.

JULY

1. American Institute of Indian Studies Fellowships. www.indiastudies.org.

AUGUST

22. NSF Research Experiences for Undergraduates Program. Full proposals. (June 1 for those requiring access to Antarctica.) www.nsf.gov.

SEPTEMBER

2. AAG Garrison Award. www.aag.org/grantsawards.

OCTOBER

15. NSF Geography & Spatial Sciences, Dissertation Research Improvement Grants. Full proposals. www.nsf.gov.

NOVEMBER

20. Philanthropic Educational Organization (PEO) Sisterhood Scholar Awards. www.peointernational.org.

AAG Grants and Competitions

The AAG offers numerous opportunities through its many grants and awards programs. See www.aag.org for details.

NSF Grants and Competitions

Information about NSF grants and awards is available at www.nsf.gov.

AAG ADVANCING GEOGRAPHY FUNDS

I (we) pledge to contribute _____ to the Association of American Geographers as part of the Advancing Geography Campaign.

Giving levels include:

<input type="checkbox"/> \$500 to \$999	Scholars Circle
<input type="checkbox"/> \$1,000 to \$4,999	Millennium Circle
<input type="checkbox"/> \$5,000 to \$9,999	Century Circle
<input type="checkbox"/> \$10,000 to \$24,999	Explorers Circle
<input type="checkbox"/> \$25,000 and above	Leadership Circle

This gift will be made as follows:

Total amount enclosed: \$ _____

Plus annual payments of: \$ _____

If you intend to fulfill your pledge through a gift other than cash, check, or marketable securities, please check:

☐ credit card ☐ bequest ☐ other

Credit Card: ☐ Visa ☐ MasterCard

Account Number _____

Name on Card _____

Expiration Date _____

Signature _____

☐ My (our) gift will be matched by my employer

I would like my gift to go toward:

- ☐ Endowment for Geography's Future
- ☐ Developing Regions Membership Fund
- ☐ AAG Student Travel Fund
- ☐ AAG Geography & Human Rights Fund
- ☐ AAG Unemployed and Underemployed Geographers Fund
- ☐ Marble Fund for Geographic Science
- ☐ AAG Public Policy Initiatives
- ☐ Enhancing Diversity Fund
- ☐ Area of Greatest Need
- ☐ Other _____

Name _____

Address _____

Phone _____

Date _____

Please send this pledge form to:

AAG Advancing Geography Fund
1710 Sixteenth St. NW, Washington, DC 20009

MOVING? HAVE YOU RECENTLY MOVED?

To update your address or contact info, visit the AAG website (www.aag.org) or fax this entire page to 202-234-2744 or mail to the AAG Office.

Name _____

Affiliation _____

Address _____

☐ Home ☐ Office

City _____

State _____ Zip _____

Telephone _____

Fax _____

Email _____

Jobs in Geography

UNITED STATES

*CALIFORNIA, LOS ANGELES

The Geographic Information Science and Technology (GIST) Graduate Programs in the USC Dana and David Dornsife College of Letters, Arts and Sciences at the University of Southern California, in Los Angeles, California, invites applicants for **full- and part-time, non-tenure-track lecturers** for the 2012-2013 academic year. The GIST Graduate Programs provide world-class training for scores of working professionals and researchers. Today, it offers both a Master's degree and an updated GIST certificate program to meet the demand from government and industry for trained GIS professionals.

The successful candidates will have substantive expertise and demonstrated excellence in teaching in the Program's core areas of **geographic information science and the accompanying technologies**, and will be expected to teach classes in one or more of the following areas: concepts for spatial thinking, spatial databases, geospatial technology project management, GIS programming and customization, GIS/GPS field techniques, remote sensing for GIS, cartography and visualization, and Web GIS. Review of candidates begins immediately and continues until the positions are filled. Candidates should have a Ph.D. in a relevant field at the time of appointment. Please send electronic versions of your curriculum vitae, a statement of teaching interests and experience, a writing sample (chapter or article), samples of syllabi and teaching evaluations, and three letters of reference that speak to teaching abilities to lbanks@dornsife.usc.edu.

In order to be considered for this position, applicants are also required to submit an electronic USC application; follow this job link or paste in a browser: <https://jobs.usc.edu/applicants/Central?quickFind=62986>.

USC strongly values diversity and is committed to equal opportunity in employment. Women and men and members of all racial and ethnic groups are encouraged to apply.

We encourage prospective candidates to review our web sites for the Spatial Sciences Institute (<http://spatial.usc.edu>) and Geographic Information Sciences and Technology Graduate Programs (<http://gis.usc.edu/>) prior to applying. For additional information, contact Dr. John P. Wilson at 213-740-1908 or jpwilson@usc.edu.

MAR 12-71

*GEORGIA, ATLANTA

The Department of Geosciences at Georgia State University in Atlanta, Georgia, anticipates to hire **two permanent, full time, academic year Lecturers** pending budgetary approval, to teach some combination of introductory courses, such as Introduction to Human Geography, Introductory Geology, Weather and Climate, Introduction to Landforms, and an upper division/graduate course in his/her specialty that complements the department's existing and emerging areas of interest. The position is a non-tenure-track, permanent, full-time, nine-month faculty appointment with a competitive salary and benefits package with an opportunity for advancement to Senior Lecturer. A Ph.D. degree in geography, geology, or a relevant discipline is required.

Georgia State University is an urban research university located in downtown Atlanta with over 30,000 degree seeking students. GSU students comprise a diverse and dynamic community seeking undergraduate and graduate degrees from

over 250 fields of study. The Department of Geosciences (<http://geosciences.gsu.edu>) is an interdisciplinary and growing component of GSU, offering bachelor's and master's degrees in the Geosciences, a graduate certificate in GIS, and a Ph.D. through the Department of Chemistry.

Apply: Candidates should provide a letter detailing their instructional interests, evaluations as appropriate, and goals, the names and email addresses of at least three references, and curriculum vitae to: Dr. Jeremy E. Diem, Chair, Lecturer Search Committee, Department of Geosciences, Georgia State University, P.O. Box 4105, Atlanta, Georgia 30302-4105. To ensure full consideration, applicants should send their materials by March 1, 2012. The position is available Fall semester 2012 and is open until filled. An offer of employment will be conditional upon background verification.

Georgia State University is a Research University of the University System of Georgia and is an EEO/AA employer.

MAR 12-68

"Jobs in Geography" lists positions available with US institutions who are Equal Opportunity Employers seeking applications from men and women from all racial, religious, and national origin groups, and occasional positions with foreign institutions.

Rates: Minimum charge of \$150. Listings will be charged at \$1.25 per word. Announcements run for two consecutive issues unless a stated deadline permits only one listing. The charge for running an announcement more than twice is one-third the original charge for each subsequent listing. We will bill institutions listing jobs after their announcements appear in JIG for the first time.

Deadline: JIG announcements must reach the AAG *before the first of the month* to appear in JIG for the following month (eg: January 1 for February issue). Readers will receive their Newsletter copies between the 5th and the 15th of the month. Schedule job closing dates with these delivery dates in mind.

Format: Announcements should be sent as an attachment or in the body of an e-mail to jig@aag.org. The announcements must be saved in Microsoft Word 5.0 or greater, or Corel WordPerfect 6 or greater. No job announcements accepted by phone or fax. Follow format and sequence of current JIG listings. All positions are full-time and permanent unless otherwise indicated. State explicitly if positions are not firm. Employers are responsible for the accuracy and completeness of their listings. JIG will not publish listings that are misleading or inconsistent with Association policy. Employers should notify the Editor to cancel a listing if the position is filled. The Editor reserves the right to edit announcements to conform with established format.

Display ads are also available. Ads will be charged according to size: 1/6 page (2 1/4" x 5") \$400; 1/3 page vertical (2 1/4" x 10") \$650; 1/3 page square (4 3/4" x 4 3/4") \$650; 1/2 page horizontal (7" x 5") \$750; 2/3 page horizontal (7" x 8") \$900; Full page (7" x 10") \$1,100. Display ads run for one month only. Please submit the text of your display ad as a separate document, if you would like to appear in the online version of the JIG.

Affirmative Action Notice: The AAG Affirmative Action Committee requires job listers to send to the JIG Editor the name, academic degree, sex, and rank of each person appointed as a result of an announcement in JIG.

Geographer Available. A service for AAG members only. Send personal listings of 50 words or less, following the format of current listings. Listings run for two consecutive issues. Enclose \$25 with listing. A blind listing service is available - the editor will assign a box number and forward inquiries to the member listed.

* Indicates a new listing

GEORGIA, VALDOSTA

The Department of Physics, Astronomy & Geosciences at Valdosta State University invites applications for a ten-month, tenure-track faculty position at the rank of **Assistant Professor** to begin August 2012.

We seek an individual with a background in **Physical Geography**. Teaching responsibilities will include introductory courses in Weather and Climate, as well as upper-level courses in the candidate's area of expertise. These areas of expertise may include, but are not limited to, climatology, water resources management, geohazards, or oceanography. Individuals with interdisciplinary background that complement existing departmental strengths are encouraged to apply. The successful candidate must have a strong commitment to undergraduate education and must exhibit the potential for teaching excellence, as well as a promising research agenda that supports their teaching. Applicants must have completed a Ph.D. in geography or a related discipline before appointment.

To apply, submit a letter of interest, curriculum vita, unofficial transcripts, proof of excellence in teaching, three letters of reference, and a signed faculty application form accessed at http://www.valdosta.edu/academic/documents/Faculty_App2010.pdf to: Dr. Edward Chatelain, Head, Department of Physics, Astronomy, and Geosciences; Valdosta State University; Valdosta, Georgia 31698-0055. Email submissions may be sent to echatela@valdosta.edu.

Review of applications will start February 3, 2012 and continue until the position has been filled. Salary is commensurate with experience. Valdosta State University is an Equal Opportunity educational institution and has a strong institutional commitment to diversity. In that spirit, we are particularly interested in receiving applications from a broad spectrum of people, including, but not limited to, minorities, and individuals with disabilities. Valdosta State University has a non-discrimination policy that includes sex, race, color, sexual orientation, religion, age, marital status, national origin, disability, and veteran status.

Additional information on Valdosta State University and the Department of Physics, Astronomy, and Geosciences can be found at the following link: <http://www.valdosta.edu/phy/>, or contact Dr. Edward Chatelain, Head, Department of Physics, Astronomy, and Geosciences; Valdosta State University; Valdosta, Georgia 31698-0055. Voice 229-333-5752. Fax 229-219-1201. Email echatela@valdosta.edu.

FEB 12-37

*ILLINOIS, CHICAGO

Lead Analyst. Thomson Reuters Lanworth, a natural resources intelligence firm, seeks a highly innovative scientist to help manage and expand a successful program providing accurate, early season estimates of the area, yield, and production of major commodity crops worldwide. Lanworth's crop production estimates are an emerging standard closely watched by the agriculture markets.

The successful candidate will: 1) manage and/or execute workflows with full accountability for quality and timeliness, 2) maintain and develop core analytical and technical processes, 3) train, supervise, and mentor junior analytical staff, and 4) communicate results in reports, presentations, and client calls.

Qualifications: Minimum 5 years' experience evaluating interactions among the physical environment, human management systems, and/or biological organisms; Competency in programming (c, FORTRAN), scripting (bash, Python), and database query (SQL) languages; Superlative written and spoken communication skills; Demonstrated ability to collect and analyze field, survey, and/or remotely-sensed data, especially in the context of crop monitoring and yield modeling; Fluency in or knowledge of Portuguese, Spanish, Chinese, and/or Russian; Experience with commercial corn, soybean, oil palm, wheat, cotton, and/or sugar production; Knowledge of the futures, options, and cash markets for agricultural commodities; Master's degree (PhD preferred) in Agronomy, Plant Sciences, Geography, Atmospheric Sciences, or a closely related discipline.

Please apply directly at: <https://toc.taleo.net/careersection/2/jobdetail.ftl?lang=en&job=CON00006061>

MAR 12-63

INDIANA, TERRE HAUTE

The Department of Earth and Environmental Systems (EES) at Indiana State University invites applications for a tenure-track **Assistant Professor** position in **Environmental Geosciences** starting August 2012. Candidates with research interests in one or more of the following areas are encouraged to apply: lakes/wetlands, hydrology, sedimentology, and geomorphology. EES faculty teach interdisciplinary courses and conduct research that engages undergraduate and graduate students in active learning and the community. The successful candidate is expected to establish a substantial externally-funded research program, mentor undergraduates, supervise graduate students,

and contribute to the earth and environmental sciences curriculum.

Apply: Candidates must apply at the university's job postings web site at <https://jobs.indstate.edu> and electronically attach a letter of application that includes a statement of research goals, teaching philosophy, curriculum vitae, copies of graduate/undergraduate transcripts, and contact information for three references.

A PhD in the Geosciences or related fields is required at time of appointment. Review of applications will begin February 1, 2012, and will continue until position is filled. Questions should be directed to Dr. Sandra Brake (Sandra.Brake@indstate.edu). For more information about the department visit: www.indstate.edu/ees.

Indiana State University is an Equal Opportunity Employer and conducts its recruitment and hiring based solely upon job-related qualifications, without regard to race, color, religion, age, sex, national origin, sexual orientation, disability, veteran status or citizenship status.

FEB 12-47

LOUISIANA, BATON ROUGE

(Anticipated/Tenure-Track) Assistant Professor (Climatologist). Department of Geography & Anthropology. The Department of Geography and Anthropology invites applications for an **Assistant Professor, Climatologist** tenure-track position, with anticipation of funding in August 2012.

Responsibilities: Teaches two Geography/climate courses per semester; meets with and advises students; conducts scholarly research with a focus in climatology; works closely with the Southern Regional Climate Center. Required Qualifications: Ph.D. or equivalent degree in Geography or a related field is required at the time of appointment. Candidates should have a promising program of research, a strong potential for external funding, and excellence in teaching and graduate mentoring.

Additional Qualifications Desired: Candidates in all climatology specialties will be considered with preference given to those with research interests in: coastal processes, climate and adaptation, regional climate downscaling, and/or climatology of extreme events. An offer of employment is contingent on satisfactory pre-employment background check.

A review of applications will begin March 1, 2012 and will continue until candidate is selected.

Apply online and view a more detailed ad at: www.lsusystemcareers.lsu.edu. Position #019004. Application materials should include

a CV, cover letter stating research and teaching interests, and names and contact information for three references. Visit our website at <http://ga.lsu.edu> for more information about the department and research programs. Contact the chair of the department via email at gachair@lsu.edu for further information regarding this position.

LSU is an equal opportunity/equal access employer. Quick link at ad URL: <https://lsusystemcareers.lsu.edu/applicants/Central?quickFind=53695>.

NOV 11-277-RR-2

LOUISIANA, BATON ROUGE

(Anticipated/Tenure-Track) Assistant Professor (GIS/Remote Sensing). Department of Geography & Anthropology. The Department of Geography and Anthropology invites applications for an **Assistant Professor, GIS/Remote Sensing** tenure-track position, with anticipated funding in August 2012.

Responsibilities: Teaches two Geography/GIS courses per semester; meets with and advises students; conducts scholarly research in GIS with a focus on Remote Sensing; works closely with CADGIS.

Required Qualifications: Ph.D. or equivalent degree in Geography or a related field is required at the time of appointment. Candidates should have a strong background in Geographical Information Science, a promising program of research, a strong potential for external funding, and excellence in teaching and graduate mentoring.

Additional Qualifications Desired: The ideal candidate is specialized in applications in one or more of the following areas: coastal environment, natural disaster, human and social dynamics, and climate change. An offer of employment is contingent on satisfactory pre-employment background check. A review of applications will begin March 1, 2012 and will continue until candidate is selected.

Apply online and view a more detailed ad at: www.lsusystemcareers.lsu.edu. Position #001071. Application materials should include a CV, cover letter stating research and teaching interests, and names and contact information for three references. Visit our website at <http://ga.lsu.edu> for more information about the department and research programs. Contact the chair of the department via email at gachair@lsu.edu for further information regarding this position.

LSU is an equal opportunity/equal access employer. Quick link at ad URL: <https://lsusystemcareers.lsu.edu/applicants/Central?quickFind=53699>.

NOV 11-278-RR-2

LOUISIANA, MONROE

Assistant Professor of Geosciences. The Department of Atmospheric Science, Earth Science, and Physics (ASEP) at the University of Louisiana at Monroe invites applications for a tenure-track faculty position in Geosciences to begin in Fall 2012. This position is contingent upon funding.

Candidates who work in the following areas are encouraged to apply: atmospheric sciences, geology, oceanography, paleoclimatology, biogeosciences, and hydrology. The Department of ASEP encourages applicants to apply who can balance teaching and research. For more information about the school and academic programs offered, please visit: www.ulm.edu. Information about the Department of ASEP can be found at <http://www.ulm.edu/geos/>.

An ideal candidate would have a doctoral degree in geosciences or a related field. ABD candidates in final stages of dissertation will also be considered. Qualifications include: Energetic and innovative teaching skills and the ability to function in a multidisciplinary department Coursework and/or experience in atmospheric science, climatology, introductory geology, or oceanography.

A research agenda and the ability to provide undergraduate research experience. Experience with scientific computing and relevant computer applications. Ability to develop and teach online courses preferable. Effective oral and written communications skills.

Applicants should send an application letter, curriculum vitae, a statement of research and teaching interests, and the names and contact information for at least three references.

Apply: Application materials should be submitted electronically to: Dr. Sean Chenoweth (chenoweth@ulm.edu).

Requests for information should be directed to: Dr. Sean Chenoweth (chenoweth@ulm.edu), 318 342-1887. Review of applications will begin February 1, 2012, but the search will continue until the position is filled.

The University of Louisiana at Monroe is an Affirmative Action/Equal Opportunity Employer.

FEB 12-23

MARYLAND, BALTIMORE

Postdoctoral Research Associate in Land Change Science & Geoinformatics. A full-time postdoctoral research position is available starting June 1, 2012 in GLOBE, a four-year NSF-funded project led by an interdisciplinary

team at the University of Maryland, Baltimore County (UMBC) in collaboration with the Global Land Project. Project web site: <http://globe.umbc.edu>. The successful candidate will work closely with GLOBE team leader Erle Ellis to conduct research and manage an international interdisciplinary team of geographers, and environmental, computer and information systems scientists. Ph.D. in Geography or related discipline and proficiency with GIS and other quantitative tools for research synthesis (data visualization, meta-analysis, metadata) required; experience with case study research a plus.

Apply: Please apply to Dr. Ellis by email (ece@umbc.edu) with cover letter stating interest and relevant skills, CV, and contacts for three references. Review of applications will begin March 1, 2012 and continue until position is filled. Support includes full benefits and is for two years with possibility of extension. Starting date is June 1, 2012; Fall 2012 applicants will be considered.

UMBC is an Affirmative Action/Equal Opportunity Employer.

FEB 12-41

*MARYLAND, COLLEGE PARK

Associate Professor or Professor. University of Maryland, College Park. The College of Behavioral and Social Sciences is seeking **computational social scientists** to expand Maryland's strengths in the computational aspects of global environmental change through **interdisciplinary joint appointments**. Rank will start at **associate professor** and tenure will be in the department closest to the applicant's background. Applicants should have disciplinary backgrounds in the social sciences and, most importantly, have advanced computational skills which include experience integrating social science data into computational models.

1. One appointment will be in **Economics/Geography**. For that position, experience is preferred in sustainability science in combination with one or more of the following: computational economics, economic geography, spatial modeling or data visualization. For a detailed description of the position and application submission instructions please visit our web ad at <https://jobs.umd.edu/applicants/Central?quickFind=56090>.
2. Another appointment will be in **Geography/Sociology**. For that position, experience with agent-based modeling, social networks analysis, computational input-output analysis or social accounting, or data visualization is pre-

ferred. For a detailed description of the position and application submission instructions please visit our web ad at <https://jobs.umd.edu/applicants/Central?quickFind=56090>.

Individuals selected will lead their own research, including sustaining external funding through grants, but will participate in ongoing and future interdisciplinary, environmental projects within their departments, and across the college. Faculty hired under this search will be expected to develop a college-wide course on computational social science that would fit into a sequence taken by students to cultivate research and computational skills. Student mentoring and service to the university community will be expected. Candidates must have a Ph.D. in anthropology, economics, geography, sociology, or related field. Applicants should demonstrate a publication record, teaching experience and a history of external grant funding.

Each applicant should submit a cover letter specifying the joint position(s) for which they are applying, along with their relevant qualifications, a curriculum vita, names of three references, and one journal article. Review of applications will continue until the positions are filled, however applications received by March 2, 2012 will receive best consideration. Applicants will be notified prior to reference checks. For questions, please contact the search coordinator, Sarah Goff-Tlemsani, at segofft@umd.edu.

The University of Maryland is an affirmative action/equal opportunity employer and is proud of its diverse faculty, staff, and student body. Women, minorities, veterans, disabled veterans, and individuals with disabilities are encouraged to apply.

MAR 12-69-1

MASSACHUSETTS, WALTHAM

Junior Research Analyst – Geospatial Analytics.

Overview: McKinsey & Company is a premier global management consulting firm that serves the world's leading companies on issues of strategy, operations, finance, marketing, and organization. McKinsey's North American Knowledge Center (NAKC), located in Waltham, MA (20 minutes west of Boston), provides research and analytic support to McKinsey consultants and clients. The center hosts several industry and functional research teams as well as a few specialized teams such as the Geospatial Analytics team. The Geospatial Analytics team combines business and spatial intelligence for decision making on a wide range of business issues. Team members

provide problem solving partnership, advanced geospatial analysis, and synthesized recommendations to consultants and firm clients.

Detailed Description: The Junior Research Analyst for the Geospatial Analytics research team provides high quality problem solving and analysis for McKinsey consultants, contributes to expanding the Geospatial Analytics team's capabilities, and participates in NAKC training and knowledge sharing. The analyst will work in a fast-paced team environment combining business and spatial intelligence with GIS to solve a variety of business problems ranging from retail location planning to land use optimization. The analyst will synthesize research and analysis results to clearly communicate key findings and recommend actions.

Desired Skills: The ideal candidate will enjoy the challenges and rewards of a professional, dynamic, team-oriented environment. The candidate must be a strong communicator with an entrepreneurial spirit and results-oriented mindset; a flexible, resourceful person who takes initiative; a conceptual thinker with strong analytic skills; and a team-oriented individual with a strong sense of responsibility toward team members and project objectives. Please note that we require both local language and English language fluency for all positions in countries where English is not the native language.

Background/Training: The ideal candidate will have: An undergraduate degree in a field such as GIS, geography, planning, or a related discipline; Alternatively, a degree in business, finance, computer science, or another relevant field accompanied by demonstrable spatial analysis abilities; The ability to transition easily from theory to application, and vice versa; An entrepreneurial spirit and the ability to get things done, often under time constraints; Strong interpersonal and analytic skills; Strong communications skills – both oral and written; Proficiency in MS Office; Fluency in English.

Apply: [https://recruiting.mckinsey.com/app004/position.nsf/\\$default/B5429A8ADAF52EE085257964006C0EDB?OpenDocument](https://recruiting.mckinsey.com/app004/position.nsf/$default/B5429A8ADAF52EE085257964006C0EDB?OpenDocument).

FEB 12-29

MASSACHUSETTS, WALTHAM

Knowledge Specialist – Geospatial Analytics.

Overview: McKinsey & Company is a premier global management consulting firm that serves the world's leading companies on issues of strategy, opera-

tions, finance, marketing, and organization. McKinsey's North American Knowledge Center (NAKC), located in Waltham, MA (20 minutes west of Boston), provides research and analytic support to McKinsey consultants and clients. The center hosts several industry and functional research teams as well as a few specialized teams such as the Geospatial Analytics team. The Geospatial Analytics team combines business and spatial intelligence for decision making on a wide range of business issues. Team members provide problem solving partnership, advanced geospatial analysis, and synthesized recommendations to consultants and firm clients.

Detailed Description: The Knowledge Specialist for the Geospatial Analytics research team serves as an authority for business related spatial thinking in the firm. The Knowledge Specialist plays key roles in serving clients, managing and developing geospatial knowledge, mentoring colleagues, and acting as subject matter leader. The Knowledge Specialist works with or leads McKinsey consulting teams to deliver significant, measurable, and unique impact to clients. The Knowledge Specialist is a leading contributor to the team's proprietary knowledge development efforts including identifying emerging trends, creating new methodologies and capabilities, and codifying knowledge. The Knowledge Specialist also works with NAKC leadership to promote spatial analysis within the firm and to McKinsey clients and participates in the broader geospatial community for external reputation building.

Desired Skills: The ideal candidate will enjoy the challenges and rewards of a professional, dynamic, team-oriented environment. The candidate must be a strong communicator with an entrepreneurial spirit and results-oriented mindset; a flexible, resourceful person who takes initiative; a conceptual thinker with strong analytic skills; and a team-oriented individual with a strong sense of responsibility toward team members and project objectives. Please note that we require both local language and English language fluency for all positions in countries where English is not the native language.

Background/Training: The ideal candidate will have: 5-7+ years experience working in one or more of the following industries: telecom, retail, financial services, healthcare, sales, logistics, climate change, or other fields that leverage spatial analysis; Strong academic qualifications, including an advanced degree (Master's, PhD) in a field such as GIS, geography, planning, or a relevant discipline such as business, finance,

operations, etc.; combined with proven spatial experience 2+ years of consulting experience, preferably with project management experience; Experience working with senior executives; Demonstrated experience in advanced spatial analysis techniques is a plus; The ability to transition easily from theory to application, and vice versa; An entrepreneurial spirit and the ability to get things done, often under time constraints; Strong interpersonal and analytic skills; Strong communications skills – both oral and written; Fluency in English.

Apply: [https://recruiting.mckinsey.com/app/004/position.nsf/\\$default/953218674800246085257964006CE0AB?OpenDocument](https://recruiting.mckinsey.com/app/004/position.nsf/$default/953218674800246085257964006CE0AB?OpenDocument).

FEB 12-30

MINNESOTA, MANKATO

The Department of Geography at Minnesota State University, Mankato invites applications for a tenure-track **Assistant Professor** beginning August 20, 2012. The successful applicant will work in the undergraduate and master's programs in Geography. Specialization and teaching areas include **Geographic Information Science (GIS, Remote Sensing and GPS mapping), Urban Geography, and Foreign Regional Geography**. Minimum qualifications include a graduate degree in Geography; and a Ph.D. (ABD considered, Ph.D. must be completed by August 19, 2012). Review of applications begins February 15, 2012. For complete position description and application procedure please visit, <http://agency.governmentjobs.com/mankato/>. Minnesota State University, Mankato is an Affirmative Action/Equal Opportunity University and a member of the Minnesota State Colleges and Universities System.

FEB 12-31

MINNESOTA, MANKATO

The Department of Geography at Minnesota State University, Mankato invites applications for a nine-month, fixed-term **Assistant Professor** beginning August 20, 2012. The successful applicant will work in the undergraduate and master's programs in Geography. Specialization and teaching areas include **Water Resources, Surface Hydrology, Climate and Introduction to Weather**. Minimum qualifications include a graduate degree in Geography; and a Ph.D. (ABD considered, Ph.D. must be completed by August 19, 2012). Review of applications begins on February 15, 2012. For complete position description and application procedure please visit <http://agency.governmentjobs.com/>

mankato/. Minnesota State University, Mankato is an Affirmative Action/Equal Opportunity University and a member of the Minnesota State Colleges and Universities System.

FEB 12-32

MINNESOTA, NORTHFIELD

The Environmental Studies program at Carleton College aims to recruit a **two-year post-doctoral fellow in physical geography or a similar interdisciplinary field in environmental science**, whose research addresses one or more aspects of global environmental change, water resources, and/or biogeography. The position will begin in September 2012.

The successful candidate should be trained in and take an interdisciplinary approach to human-environment relations. We are particularly interested in candidates who focus on energy, climate, ecosystems, sustainability, and/or food. The candidate must have a Ph.D. (received less than five years ago). Appointment involves half-time teaching and half-time for research and writing (2-3 courses per year each year). The successful candidate must demonstrate a commitment to teaching in an undergraduate Environmental Studies program. Carleton is a highly selective liberal arts college, located in Northfield, MN, about a 45-minute drive from Minneapolis/Saint Paul.

To apply, please visit the Carleton College Web site at jobs.carleton.edu to complete the online application, including a letter of application, curriculum vitae, a sample of representative work. In addition, please send three letters of reference to: Kimberly Smith, Chair, Environmental Studies Program Search Committee, Carleton College, One North College Street, Northfield, MN, 55057.

The search committee will begin reviewing applications after March 16, 2012.

Carleton College does not discriminate on the basis of race, color, creed, ethnicity, religion, sex, national origin, marital status, veteran status, actual or perceived sexual orientation, gender identity and expression, status with regard to public assistance, disability, or age in providing employment or access to its educational facilities and activities.

FEB 12-50

*NEW HAMPSHIRE, HANOVER

The Department of Geography (www.dartmouth.edu/~geog) at Dartmouth College and the Nelson A. Rockefeller Center at Dartmouth College (<http://rockefeller.dartmouth.edu>) seek a scholar/teacher to fill a **Visiting Assistant Professor** position in **GIS/GIScience/Geographic Visualization and Public Policy** for the academic year 2012-2013. This one-year position entails teaching four courses including two sections of introductory GIS and a course that fulfills the Public Policy minor (<http://rockefeller.dartmouth.edu/minor>) and another course dependent on the candidate's area of expertise. Application review will begin February 20 and will continue until the appointment is filled. Please send letter of application, c.v., evidence of teaching excellence, sample course syllabi, and names/email addresses of three referees.

With an even distribution of male and female students and a third of the undergraduate student population members of minority groups, Dartmouth College is committed to diversity and encourages applications from women and minorities. Dartmouth College is an Equal Opportunity, Affirmative Action employer.

Apply: Xun Shi, Search Committee Chair, Dartmouth College, Department of Geography, 6017 Fairchild, Hanover, NH 03755. Email: geography@Dartmouth.edu.

MAR 12-70-1

NEW JERSEY, BRANCHBURG

Adjunct – Instructor, Physical Geography. Raritan Valley Community College (RVCC) has an immediate need for the spring 2012 semester. We are currently seeking an Adjunct Instructor-Physical Geography to work part time in our Humanities, Social Science & Education Department this upcoming semester. The Instructor will primarily teach Introduction to Physical Geography. This course examines the processes which shape the physical and biological landscape with which human interact. Emphasis is placed upon the role in which humans affect this landscape.

The successful incumbent will teach in areas such as: Earth as a Planet, Global Energy Balance, Air temperature and Circulation, Weather and Global Climates, Global Biogeography, Forces Shaping the Earth, Human Impact upon the Earth.

This course will include use of visuals, examination of fossils and contemporary primates, field visits to zoo and/or museum and guest speakers from various disciplines and community Services.

Requirements: Master's degree required in area of specialty. Teaching experience is required, college level is preferred. Positions are located on the Main RVCC Campus unless otherwise noted.

Application Instructions: RVCC's starting rate and rank are commensurate with educational qualifications and experience.

Apply: for consideration of the above position, please submit your cover letter and resume online at: <http://rvcc.interviewexchange.com/jobofferdetails.jsp?JOBID=29284>.

We regret that we are unable to respond to each and every resume received. Only those candidates of interest will be contacted directly.

FEB 12-49

NEW YORK, NEW YORK CITY

Assistant Professor – Geographic Information Science. The Department of Geography, Hunter College, City University of New York, invites applications for a tenure-track Assistant Professor position with specialization in Geographic Information Science to start September 2012. The successful candidate will be expected to maintain an active research program; teach undergraduate and graduate introductory and advanced courses in GIS; mentor both undergraduate and graduate students; contribute to our growing GIS certificate program; be part of developing a professional MGIS program to complement our MA in Geography; and participate in the Ph.D. program in Earth and Environmental Science at the CUNY Graduate Center. We seek a candidate with spatial database expertise and innovative ideas in geocomputation, apps-based environments, and geospatial modeling. Topical area of GIS application is open. PhD in geography or appropriate related field required by time of appointment. Qualified non-geographers are welcome to apply.

Apply: send cover letter; CV; a statement of research and teaching interests; a sample of written work relevant to the position; and contact information for three references to the address below by March 5, 2012: Search Committee, Department of Geography, Hunter College-CUNY, 695 Park Avenue – HN 1006, New York, NY 10065.

If applying electronically, send one PDF file composed of a cover letter; CV; statement of research and teaching interests; sample of written work relevant to this position; and complete contact information for three references to geogjob@hunter.cuny.edu.

The City University of New York is an equal opportunity/Affirmative Action/Immigration Reform and Control Act/Americans with Disabilities Act Employer.

FEB 12-33

NEW YORK, PLATTSBURGH

Assistant Professor, Geography/Environmental Studies. The Center for Earth and Environmental Science at the State University of New York College at Plattsburgh seeks to fill a full-time, tenure-track position at the rank of Assistant Professor of Geography/Environmental Studies beginning August 2012.

Responsibilities include: Applicants must have a focus on human-environment geography and will be expected to teach courses in this area. Candidates must demonstrate a strong commitment to interdisciplinary undergraduate teaching at both the introductory and advanced levels, as well as to research. They will be expected to contribute to Plattsburgh's Geography, Environmental Studies, and General Education programs. Responsibilities also include advising students and departmental and university service.

Required Qualifications: An advanced degree in Geography is required, with Ph.D. required at time of appointment.

Preferred Qualifications: A Ph.D. in Geography or a comparable field with a focus on sustainability and/or human-environment interactions; demonstrated expertise in the areas of urban planning and sustainability, political ecology and GIS skills; and documented evidence of college-level teaching effectiveness.

SUNY Plattsburgh is an equal opportunity employer committed to excellence through diversity. Salary: \$47,000 minimum, plus excellent benefits. Review of applications will begin immediately and continue until the position is filled. Materials received by January 27, 2012 will be guaranteed full consideration.

Apply: Please apply to <http://jobs.plattsburgh.edu/postings/3285> and include cover letter, resume or C.V., a statement of teaching philosophy, and 3 current letters of reference that indicate teaching effectiveness. Official transcripts from an accredited institution will be required prior to employment.

FEB 12-26

NEW YORK, SYRACUSE

Syracuse University. The Department of Public Health, Food Studies and Nutrition in the David B. Falk College of Sport and Human Dynamics at Syracuse University invites applicants for a full time tenure track position in **Food Studies, rank open**, to begin August 2012. We seek an Associate or Full Professor, but will also consider promising applicants at the rank of Assistant Professor. The department seeks a

high-energy faculty member with expertise in the interdisciplinary study of food, foodsystems, and foodways. This academic appointment is in anticipation of establishing undergraduate and graduate programs in food studies.

Responsibilities include developing a stream of high-quality research; program and curriculum design; mentoring, advising and instructing undergraduate and graduate students; fulfilling service responsibilities through department, college, university and professional avenues; and establishing professional liaisons with organizations in the local community and the global field.

Minimum qualifications include an earned doctorate related to food studies, an active portfolio of externally funded research and peer reviewed publications (or evidence of potential to develop such a portfolio), and teaching experience at the university level. We are willing to consider candidates trained in a variety of disciplines but with research and teaching expertise in food studies.

The Department of Public Health, Food Studies and Nutrition offers undergraduate and graduate degrees in nutrition and public health and is building a food studies program. The department focus is on health issues among diverse populations. Approximately 400 undergraduate and 40 graduate students pursue degrees in this department. Extensive opportunities exist for collaboration at Syracuse University and with the State University of New York (SUNY). The Department of Public Health, Food Studies and Nutrition is a leader in the University's emphasis on publicly-engaged scholarship and applications from scholars with engaged research portfolios are encouraged to apply. Priority consideration will be given to applications received by February 1, 2012 and the search will remain open until the position is filled. For online application instructions go to www.sujobopps.com, (#028629) and attach the following: a cover letter, curriculum vitae, and contact information for three references.

The University and surrounding community offer a dynamic intellectual and cultural atmosphere; a diverse community; affordable housing; and many other assets that make Syracuse a great place to live and work. Syracuse University strongly embraces diversity. Women and members of underrepresented groups are especially encouraged to apply. Syracuse University is an affirmative action/equal opportunity employer.

Apply Here: <http://www.Click2Apply.net/cwdfv9r>.

FEB 12-36

NORTH CAROLINA, CHARLOTTE

The University of North Carolina at Charlotte, Department of Geography and Earth Sciences is recruiting a tenure-track, **Assistant Professor** specializing in **Environmental Remote Sensing** for appointment in July 2012. Required qualifications: 1) a doctoral degree in a relevant field at the time of appointment; 2) ability to develop and maintain an externally funded research program on remote sensing of the natural and/or built environment; 3) ability to teach remote sensing courses at the graduate and undergraduate level to diverse student populations; 4) ability to contribute to the Department's interdisciplinary mission. Candidates who strengthen bridges across the geospatial, natural, and social sciences curricula and research collaborations are especially encouraged to apply.

A full description of the position and application details can be found at <http://jobs.uncc.edu>. Review of applications will begin January 30, 2012 and continue until the position is filled. For more information, contact Dr. Ross Meente-meyer at 704-687-5944 or rkmeente@uncc.edu, or view our department website, <http://www.geoeearth.uncc.edu/>.

UNC Charlotte is an AA/EOE and applications from women and minorities are strongly encouraged.

FEB 12-22

OHIO, ATHENS

Associate/Full Professor and Director, Environmental Studies. The Voinovich School of Leadership and Public Affairs at Ohio University in Athens, Ohio seeks a tenure-track Associate/Full Professor and Director of Environmental Studies. We seek to hire a candidate with a Ph.D. in an environmentally related field, evidence of scholarly research, a record of graduate and undergraduate teaching and advising, and experience in academic leadership and administration. The successful candidate will be expected to provide strategic leadership for the Environmental Studies academic program and promote faculty, staff, and student collaboration in interdisciplinary environmental scholarship, instruction, and community engagement. The successful candidate will be expected to contribute to the School's extensive applied work portfolio. Faculty appointments are year-round (rather than for the 9-month academic year).

The Voinovich School of Leadership and Public Affairs (www.ohio.edu/voinovichschool) at Ohio University is an innovative, transformative program of job creation and real-world education of Ohio's next generation of entrepreneurs. The School develops solutions for energy and environmental issues, trains state government and nonprofit agency leaders in strategic value creation and performance measurement, and provides expert analysis of the state's K-12 system. The School, along with the University, has become a leader in public/private partnerships, and is poised to help Ohio become a business-friendly state.

Ohio University, a public university, is classified as a Doctoral/High Research Activity institution, enrolling 21,000 students (www.ohio.edu). Ohio University is located in Athens, Ohio, which is an historic college town with a modest cost of living in southeastern Ohio in the foothills of the Appalachian mountain range. Pay Rate – commensurate with qualifications.

Apply: Submit online applications at <http://www.ohiouniversityjobs.com/postings/1535>. Applicants must attach a letter of application and curriculum vitae. Position will remain open until filled; for full consideration, please apply by 01/16/2012. This position is contingent on final budgetary approval at the University level.

Ohio University is committed to creating a respectful and inclusive educational and workplace environment. Ohio University is an equal access/equal opportunity and affirmative action employer with a strong commitment to building and maintaining a diverse workforce. Women, persons of color, persons with disabilities, and veterans are encouraged to apply.

FEB 12-27

OHIO, ATHENS

Assistant/Associate Professor – Environmental Studies. The Voinovich School of Leadership and Public Affairs at Ohio University in Athens, Ohio seeks a tenure-track Assistant/Associate Professor in Environmental Studies. Candidates must have a Ph.D. or equivalent, relevant postdoctoral training, and evidence of scholarly research.

We seek to hire a candidate who has expertise in ecology, biology, geography, or other related environmental field. In addition, applied research and experience in terrestrial ecology, energy, sustainability, or climate change policy is preferred. The successful candidate will be expected to develop an interdisciplinary, extramurally funded research program, mentor M.S. students,

and participate in undergraduate and graduate teaching in Environmental Studies. The successful candidate will also be expected to contribute to the School's extensive applied work portfolio. Faculty appointments are year-round (rather than for the 9-month academic year).

The Voinovich School of Leadership and Public Affairs (www.ohio.edu/voinovichschool) at Ohio University is an innovative, transformative program of job creation and real-world education of Ohio's next generation of entrepreneurs. The School develops solutions for energy and environmental issues, trains state government and nonprofit agency leaders in strategic value creation and performance measurement, and provides expert analysis of the state's K-12 system. The School, along with the University, has become a leader in public/private partnerships, and is poised to help Ohio become a business-friendly state.

Ohio University, a public university, is classified as a Doctoral/High Research Activity institution, enrolling 21,000 students (www.ohio.edu). Ohio University is located in Athens, Ohio, which is an historic college town with a modest cost of living in southeastern Ohio in the foothills of the Appalachian mountain range. Pay Rate – commensurate with qualifications.

Apply: Submit on-line applications at <http://www.ohiouniversityjobs.com/postings/1540>. Applicants must attach a letter of application and curriculum vitae. Position will remain open until filled; for full consideration, please apply by 01/16/2012. This position is contingent on final budgetary approval at the University level.

Ohio University is committed to creating a respectful and inclusive educational and workplace environment. Ohio University is an equal access/equal opportunity and affirmative action employer with a strong commitment to building and maintaining a diverse workforce. Women, persons of color, persons with disabilities, and veterans are encouraged to apply.

FEB 12-28

*OKLAHOMA, TAHLEQUAH

Northeastern State University, Tahlequah, OK, invites applications for a full time tenure track **Assistant Professor of Geography**. The department is seeking a broadly trained geographer capable of teaching in one or both the following sub-disciplines: 1) historical/cultural geography and/or 2) geospatial techniques. Twelve-hour teaching load per semester; course load to include Fundamentals of Geography as well

as those pertinent to his or her specialization, such as Historical Geography of the United States, Cultural Geography, World Regional Geography, Geographic Information Systems, and potentially Remote Sensing. Ability to contribute to the American Indian Studies degree, masters degree in American Studies, or to offer a regional course on East Asia, Africa, or South America is a plus. Prefer college teaching experience. Must be willing to develop online courses and teach at branch campuses. PhD required by time of appointment. Complete faculty employment form and post all requested information at www.nsuok.edu/humanresources. Application review begins on 3-15-12. AA/EOE

MAR 12-64

*TEXAS, CORPUS CHRISTI

TAMUCC invites applications for the following position, an **Assistant/Associate Professor of Geospatial Computer Science**, for Fall 2012.

Texas A&M University-Corpus Christi is a learning centered institution. TAMUCC (The Island University) is located on its own island surrounded by the water of Corpus Christi and Oso bays. The beautiful natural setting is enhanced by our modern, attractive, and state-of-the-art classroom buildings and support facilities, and our colorful landscaping, and plazas that lend a distinctive tropical feel to the campus. Our Hispanic Serving Institution status provides a foundation to attain significant impacts for improving the educational attainment of our regional students, and our strategic location on the Gulf of Mexico and on the cultural border with Latin America places the Island University in perfect position to help realize its national and international prominence goals.

The College of Science and Engineering announces the newly created School of Engineering & Computing Sciences (ENCS) which prepares students to pursue productive careers and advanced degrees in engineering, computer science, or geographic information sciences.

The School of Engineering & Computing Sciences is seeking a **Assistant/Associate Professor of Geospatial Computer Science**. The following are the minimum qualifications for the position: An earned Ph.D. in Computer Science or a closely related field, record of original research, with significant publications in archival journals commensurate with the candidate's level, demonstrated excellence or potential in teaching at the undergraduate and graduate levels, and in supervising graduate and undergraduate student researchers,

ability to communicate effectively with an ethnically and culturally diverse campus community, and interest in supporting a Ph.D. program being established in Geospatial Computer Science.

For Associate Professor, an established record of external funding that supports the candidate's graduate and research program is also required.

Preferred qualifications: Experience with commercial geospatial computing systems and a background in research laboratories, corporations or government/non-profit sectors.

Job duties: Teach at undergraduate and graduate levels, establish and direct an active and externally funded research program, advise and mentor Geospatial Computer Science graduate students, assist with recruiting graduate students, and represent the program in national and international geospatial computing functions.

Salary range: Commensurate with background and experience. Information about the school is available at <http://encs.tamucc.edu/>.

Apply online at <https://islanderjobs.tamucc.edu>. Submit a letter of application addressing qualifications and stating research interests; current curriculum vitae including an email address; three letters of recommendation; and a copy of the transcript from the institution awarding the highest degree.

Employment is contingent upon proof of the legal right to work in the United States. An appointment is not final until proof is provided to the University. Position open until filled (or recruitment canceled). Review of applications to begin as soon as possible.

Texas A&M Corpus Christi is an Equal Opportunity/Affirmative Action Employer committed to diversity.

MAR 12-53

*TEXAS, KINGSVILLE

The Department of Physics & Geosciences at Texas A&M University-Kingsville invites applications for a tenure-track **Assistant Professor of Geosciences** with primary expertise in Remote Sensing/Geographic Information Science and atmospheric sciences, beginning August 2012. The review of applications will begin March 15, 2012, and continue until the position is filled.

Primary responsibilities of the faculty member will be to: 1) offer undergraduate courses in GIS, meteorology and climatology, physical geography and/or oceanography; 2) coordinate the GIS Certificate Program; 3) develop a robust, sustainable recruiting program for undergraduates in the area of geospatial technologies; and 4) help establish an Interdis-

ciplinary Geospatial Center serving the region. Candidates must be comfortable working across disciplines, teaching introductory and advanced courses to a diverse student clientele, and mentoring undergraduate research projects. The ability to obtain external funding for faculty and student research is vital, as is an overall commitment to excellence in teaching, research, and service. A Ph.D. in Geography is preferred, although applicants with a terminal degree in atmospheric science or oceanography will be considered. The faculty member normally will teach one or two GIS courses as well as two courses in introductory physical geography/atmospheric sciences per semester. Salary and benefits are competitive.

Texas A&M University-Kingsville is part of the Texas A&M University System. Located 40 miles from Corpus Christi and 120 miles north of Brownsville, Texas A&M University-Kingsville is a rapidly growing Carnegie Research Level 2 institution of ~6,200 students offering doctoral, master's and bachelor's degrees. The student body reflects the ethnic diversity of South Texas with approximately 65% of the student body being of Hispanic origin. Our dynamic and fast-emerging Geosciences Program of 6 faculty and 40 undergraduate majors (<http://physics.tamuk.edu/index.html>) is uniquely positioned in South Texas, a semiarid region famous for its mild subtropical climate, friendly people, popular beaches, traditional Hispanic and ranching cultures, year-round outdoor activities, low cost of living, and winter "snowbirds" fleeing northern climes.

Apply: Applicants need to send a letter describing research and teaching interests, curriculum vitae, evidence of teaching excellence, copies of recent publications and contact information for three references to: Dr. Thomas McGehee, Chair, Geosciences Search Committee, Texas A&M University-Kingsville, Department of Physics/Geosciences, MSC 175, Kingsville, TX 78363. Email: kftlm00@tamuk.edu. Voice: 361-593-3590.

Applicants must also formally apply online by visiting <https://javjobs.tamuk.edu> and selecting the Kingsville campus. Prior to issuing a letter of appointment, official transcripts must be received directly from each degree-granting institution by the Office of the Provost, Texas A&M University-Kingsville, MSC 102, Kingsville, Texas 78363-8202. If transcripts are from an international institution, it is the responsibility of the prospective faculty member to have the transcripts translated and evaluated by

an approved credential evaluator (AACRAO) <http://www.aacrao.org/credential/index.htm>.

Texas A&M University-Kingsville is committed to excellence; the University invites applications from all qualified individuals. EEO/AA/ADA.

MAR 12-72

VIRGINIA, BLACKSBURG

The College of Natural Resources and Environment at Virginia Tech has four departments (Geography, Wood Science and Forest Products, Fish and Wildlife Conservation, and Forest Resources and Environmental Conservation) that are steeped in traditions emphasizing sustainability. Our mission integrates the economic, social, and environmental dimensions of sustainable systems. Our programs address the science and practice of sustaining energy and material systems, conserving biological diversity and endangered species, sustaining economic production and markets, planning water and land use, monitoring and geospatial analysis of environmental conditions, marketing ecosystem services, addressing climate change, engaging community in public and private lands conservation, and a host of other problems and challenges that emerge whenever and wherever people use land and water resources to build thriving and sustainable communities.

The Department of Geography seeks to develop both human and physical perspectives on environmental issues and critical thinking skills needed to address the complex problems of sustaining natural resources and the environment. More specifically, we want (1) to provide leadership and visibility on a topic of global importance, (2) to prepare students with abilities and perspectives that help them contribute to current and future societal needs, and, (3) in the long standing tradition of the study of nature-society relations in Geography, to develop a full undergraduate option that examines the cultural, political, and environmental aspects of sustainability.

The Department of Geography at Virginia Tech is seeking applicants for a tenure-track position in **Environmental Sustainability**. The position will be filled at the **Assistant Professor** level. Specifically we seek a human geographer specializing in the theory, analysis and application of sustainable practices in human-environment interaction. Individuals must have their PhD in Geography, environmental sustainability or in a closely related discipline

by the time of appointment. The candidate must be able to teach large classes in an undergraduate sequence (Seeking Sustainability) in the university's Curriculum for a Liberal Education (core curriculum), other undergraduate and/or graduate courses in her/his specialization, and supervise graduate students in our MS program and our interdisciplinary PhD program in Geospatial and Environmental Analysis. Evidence of an established research track in human geography/ sustainability must be provided.

We seek an energetic faculty member committed to excellent teaching and dedicated to research with the skills needed to secure external funding. An ability to develop a strong, externally funded research program and publication record is essential for success at Virginia Tech. The specific research specialty is open, but preference will be given to candidates who can strengthen research collaboration within the department. Full information concerning the department, college and university can be found at: <http://www.geography.vt.edu>, <http://www.cnre.vt.edu> and <http://www.vt.edu>.

Virginia Tech is an EO/AA Employer committed to diversity.

Apply: Interested persons must apply at <http://jobs.vt.edu>, posting number 0111247, where they will submit a two-three page cover letter highlighting their research and teaching experience and interests, current curriculum vitae, two recent writing samples, research statement, teaching philosophy and, if possible, teaching evaluations.

We ask also that you arrange to have three reference letters sent as soon as possible after you apply to geosearch@vt.edu. Letters should be addressed to: Lynn Resler, Chair, Sustainability Search Committee, Department of Geography (0115), Virginia Tech, Blacksburg, VA 24061, and sent via PDF email attachment to: geosearch@vt.edu. All application materials should be submitted by February 1, 2012 when review of applications will begin, continuing until the position is filled. Inquiries can be made to Lynn Resler via geosearch@vt.edu.

FEB 12-20

*VIRGINIA, FREDERICKSBURG

University of Mary Washington. The Department of Geography seeks a broadly trained **human geographer** with ability to teach **GIS** to fill a **one-year visiting position** at the **Assistant Professor** level beginning August

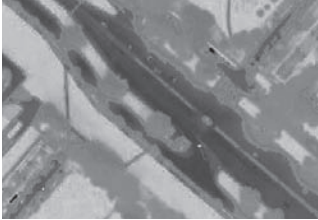
2012. Ph.D. in geography preferred but ABD candidates will be considered. The successful applicant will teach introductory human or world regional geography, an introductory GIS/cartography course, and upper-level courses in their area of expertise. Preference will be given to candidates who can teach courses related to globalization, development, or environmental geography. Apply: Candidates should submit a letter of application, CV, statement of teaching philosophy, and evidence of effective teaching by March 9, 2012 at <https://careers.umw.edu>. The University of Mary Washington accepts only completed online applications. Faxed, mailed, or emailed applications will not be considered. All candidates should also request three letters of recommendation be sent by March 9, 2012, to Dr. Jacqueline Gallagher, Associate Professor, Department of Geography, Monroe Hall, University of Mary Washington, 1301 College Avenue, Fredericksburg, Virginia, 22401 or jgallagh@umw.edu. In a continuing effort to enrich its academic environment and provide equal educational and employment opportunities, the University of Mary Washington actively encourages women, minorities, disabled individuals and veterans to apply.

MAR 12-58-1

WISCONSIN, LA CROSSE

The Department of Geography and Earth Science at the University of Wisconsin – La Crosse invites applications for a full-time tenure track **Assistant Professor** position in **Geographic Information Science**, beginning fall 2012. Ph.D. in Geography required at time of appointment. Demonstrated expertise in GIS and spatial analysis with proficiency in ArcGIS and its extensions as applied to any of the subfields of geography. Primary teaching responsibilities include introductory and advanced courses in GIS, as well as additional courses in his/her specializations. The appointee will be expected to provide leadership and vision to the geographic information science core in an undergraduate geography program, demonstrate a commitment to excellence in undergraduate teaching, develop an active research program seeking external grants, participate in undergraduate research, and provide service to the University and broader community. The Department of Geography and Earth Science values diversity and faculty who bring diverse experiences to their teaching.

Electronic submission of application materials is required. For additional information about



DIRECTOR, NATIONAL CENTRE FOR GEOCOMPUTATION NATIONAL UNIVERSITY OF IRELAND MAYNOOTH

National University of Ireland Maynooth is a dynamic and vibrant research-led University with an interdisciplinary focus and major strengths in the Sciences and Engineering. The university is situated in the historic town of Maynooth, 20km from the centre of Dublin City, and in the heart of the beautiful countryside of Kildare.

The **National Centre for Geocomputation (NCG)** was founded at the National University of Ireland Maynooth in 2004 through funding provided by Science Foundation Ireland. Since then the NCG has become firmly established as a leading international research centre in the field of Geocomputation, with over thirty researchers, funding of circa €2M per annum, and is a major intellectual centre committed to extending understanding and utilisation of the capture, analysis and modelling of spatial data.

The National University of Ireland Maynooth is now seeking to make an appointment at professorial level to lead this internationally important research centre.



NUI MAYNOOTH
Ollscoil na hÉireann Má Nuad

The successful candidate will

- be recognised as a world-class researcher in Geocomputation or Geographical Information Science,
- have a demonstrated capacity for strategic and dynamic leadership on an international stage,
- have a successful track record in building strategic partnerships and securing independent funding from public competitive sources and/or through private investment,
- have a research profile that will complement existing strengths in Geocomputation, Spatial Analysis and Social Sciences at NUI Maynooth,
- be entrepreneurial, committed to working with industry and interested in commercialisation.

Informal inquiries can be directed to Prof. Ray O'Neill, Vice President for Research, at vicepresident.research@nuim.ie

Details on NCG can be found at ncc.nuim.ie
Further information on the post and the application procedure can be found at www.nuim.ie/vacancies

The deadline for applications will be **30th March 2012**.

this position and to apply, please visit <https://employment.uwlax.edu>. Application should include a cover letter, curriculum vita, statement of teaching and research interests, evidence of teaching ability and contact information for 3 references. Review of applications will begin March 1, 2012 and continue until the position is filled.

For questions, please contact Dr. Cynthia Berlin, Chair of Search and Screen Committee, Department of Geography and Earth Science, University of Wisconsin-La Crosse. Voice 608-785-8333, FAX 608-785-8332, e-mail cberlin@uwlax.edu (www.uwlax.edu/geography).

UW-La Crosse is an affirmative action/equal opportunity employer. Women, persons of color, and individuals with a disability are encouraged to apply. Please contact the Search and Screen Committee if you have a special need/accommodation to aid your participation in our hiring process. Employment will require a criminal background check. A pending criminal charge or conviction will not necessarily disqualify an applicant. In compliance with the Wisconsin Fair Employment Act, UW-La Crosse does not discriminate on the basis of arrest or conviction record.

FEB 12-48

INTERNATIONAL

*CANADA, TORONTO

York University. The Department of Geography invites applications from qualified candidates for **two (2) one-year Sessional Assistant Professor** positions in **Human Geography**. Applicants must have a PhD and an active research agenda in one or more of the following areas: social geography, political geography, urban geography, immigration and refugee studies. The successful candidates will be expected to teach the equivalent of three full courses at the undergraduate level. Preference will be given to applicants with experience and demonstrable success in university teaching.

These positions carry a teaching load of three full courses or the equivalent. The start date is July 1, 2012. All York University positions are subject to budgetary approval.

The deadline for applications is March 23, 2012.

Apply: Applicants should submit a letter of application outlining their professional experience and research interests, an up-to-date curriculum vitae, and a teaching dossier, and arrange for three confidential letters of recom-

mendation to be sent to: Professor Lucia Lo, Chair, Department of Geography, N418 Ross Building, York University, 4700 Keele Street, Toronto, Ontario, Canada M3J 1P3.

York University is an Affirmative Action Employer. The Affirmative Action Program can be found on York's website at www.yorku.ca/acadjobs or a copy can be obtained by calling the affirmative action office at 416-736-5713. All qualified candidates are encouraged to apply; however, Canadian citizens and Permanent Residents will be given priority. Temporary entry for citizens of the U.S.A. and Mexico may apply per the provisions of the North American Free Trade Agreement (NAFTA).

MAR 12-52-1

*CANADA, VANCOUVER

Simons Visiting Chair in International Law and Human Security, School for International Studies, Simon Fraser University.

The School for International Studies invites applications from scholars and from those with relevant professional experience in international law or diplomacy for this visiting position, to be taken up in the Fall Term (September-December) 2012. The successful candidate will be asked to teach one senior undergraduate course, to mount a workshop on her/his research interests, and to contribute to the research activity of the School. The position will be remunerated at a level appropriate to the successful candidate's seniority and experience and assistance may be given with travel and housing costs.

Applications will be treated in confidence and should include a letter of application with a statement of interest, curriculum vitae, and a list of publications. Applicants should also provide the names and contact details of six referees.

Apply: All materials should be sent electronically to: Dr. John Harriss, Director, School for International Studies (intst@sfu.ca) by March 31, 2012. In the Subject Line of the email, indicate the following information in the order specified: 2012 Fall SVC Application, Applicant Name.

All qualified candidates are encouraged to apply; however, Canadians and permanent residents will be given priority. Simon Fraser University is committed to the principle of equity in employment and offers equal employment opportunities to qualified applicants.

Under the authority of the University Act personal information that is required by the University for academic appointment competitions

will be collected. For further details see the collection notice at http://www.sfu.ca/vpacademic/faculty_openings/Collection_Notice.html.

MAR 12-62-1

*IRELAND, DUBLIN

The School of Geography, Planning and Environmental Policy at University College Dublin (UCD) invites applications for a temporary 5-year appointment as **Lecturer in Human Geography**, starting August 2012. Candidates with interests in a quantitative approach to human geography subject areas are particularly encouraged, although this is not a mandatory criterion for consideration.

The successful applicant will contribute significantly to the quality expansion of research in the School by undertaking and publishing high calibre research and scholarship in her/his field of expertise within human geography. In addition, the successful candidate will participate effectively in the School's graduate and undergraduate programs.

University College Dublin (UCD) is a large and diverse University whose origin dates back to 1854. There are over 22,000 students including 2,500 international students from more than 80 countries. The University is situated on a large modern campus about 4km south of Dublin city centre. The School of Geography, Planning and Environmental Policy offers a vibrant research and teaching environment.

Candidates must possess a PhD in Geography or related discipline (or will have successfully completed a PhD by the time of taking up the post).

For a full job description and application procedures please go to: <http://www.ucd.ie/hr/jobvacancies>. Application deadline is 23:30 (GMT) on March 15, 2012.

For further information about the School please visit: <http://www.ucd.ie/gpep>. Questions may be directed to the Head of School, Prof. Zorica Nedovic-Budic at zorica.nedovic-budic@ucd.ie.

MAR 12-60-1

*NEW ZEALAND, AUCKLAND

Lecturer/Senior Lecturer - Environmental Management (2 Positions). Faculty of Science, School of Environment, The University of Auckland, New Zealand. Vacancy Number: 13807. Lectureships/Senior Lectureships in Environmental Management.

The University of Auckland invites applications for two positions in the general field of

Environmental Management with a focus on sustainability. The successful candidates will be appointed at either Lecturer or Senior Lecturer level within the School of Environment (ENV) which is located in the Faculty of Science.

Environmental Management is expanding as an area of study within the School and elsewhere in the University, as is its profile at regional and national levels. The School wishes to develop its contribution to that area and to better address theoretical and applied debates about sustainability in a broad environmental management context. It seeks to develop a research and teaching team with a passion for understanding the social dimensions of transitioning to sustainable development. The School will consider applicants who have an interest in the debates surrounding the assessment and promotion of sustainability, but it is particularly interested in applicants with expertise in one or more of the following areas of research and teaching: (1) critique of the corporate response to sustainability and in distinguishing the social foundations for sustainable production and consumption, (2) policy, educative or civic approaches to encouraging pro-environmental behaviour, enhancing environmental citizenship or building community capacity for social transitions and (3) trans-boundary and integrated environmental management and complexity in relation to environmental management issues.

Applicants should have a strong theoretical grounding of relevance to environmental management and in particular sustainability. They will hold a PhD in geography, environmental management or a cognate discipline, and will have developed a research portfolio in environmental policy studies, social change for sustainability, sustainable production and consumption systems or complexity and environmental management. The successful applicants will be expected to develop undergraduate and postgraduate curricula, supervise research students and contribute to teaching in a range of cognate areas within the School. Evidence of an ability to attract research funding, publish in leading peer-reviewed journals, build research collaborations and to engage with stakeholders beyond the University is desirable.

The School of Environment includes academics from a wide range of backgrounds including ecology, physical and human geography, geology, environmental science and environmental management. Staff within the School are prominent in a range of national and international research programmes involving collaborators in universities, government research institutes and industry. Further details about this position may be obtained by visiting the University's Job Opportunities web site: <https://www.opportunities.auckland.ac.nz/>. Information on the School of Environment can be found at www.env.auckland.ac.nz.

Applications close March 16, 2012. For further information go to www.auckland.ac.nz/opportunities. The University has an equity policy and welcomes applications from all qualified persons. The University is committed to meeting its obligations under the Treaty of Waitangi and achieving equity outcomes for staff and students.

MAR 12-61-1

***NEW ZEALAND**
Lecturer in Human Geography - New Zealand. Lincoln University's Department of Social Science, Parks, Recreation, Tourism and Sport (SSPRTS) emphasises multidisciplinary in its teaching and research, combined with currency in theory, application and practitioner knowledge and skills. The Department teaches three main undergraduate degrees: the Bachelor of Tourism Management (B.T.M.); the Bachelor of Sport and Recreation Management (B.S.R.M.); and the Bachelor of Social Science (B.Soc.Sci.).

MAR 12-61-1

*NEW ZEALAND

Lecturer in Human Geography - New Zealand. Lincoln University's Department of Social Science, Parks, Recreation, Tourism and Sport (SSPRTS) emphasises multidisciplinary in its teaching and research, combined with currency in theory, application and practitioner knowledge and skills. The Department teaches three main undergraduate degrees: the Bachelor of Tourism Management (B.T.M.); the Bachelor of Sport and Recreation Management (B.S.R.M.); and the Bachelor of Social Science (B.Soc.Sci.).

To complement and support its existing strengths and focus, the University seeks to appoint a lecturer in human geography. The appointee will have a strong research record and potential in the field of human geography and related themes of urban growth and change, and society-environment relations. The appointee will also have the qualifications and experience necessary to teach core undergraduate and postgraduate courses in these areas.

All applicants must have qualifications to the PhD level in a core social science discipline such as human geography, with appropriate teaching and research experience.

This is a continuing, full-time appointment. The starting date will be negotiated with the successful candidate, and is expected to be no later than May 2012. Specific enquiries should be directed to Dr. Gary Steele, Head, Department of Social Science, Parks, Recreation, Tourism and Sport, telephone +64 3 325 2811 ext 8, or by email Gary.steele@lincoln.ac.nz.

Dr. Gary Steel, Head of Department (SSPRTS) welcomes you contacting him to discuss any initial enquiries you may have about the vacancy. He can be reached at Gary.steel@lincoln.ac.nz or telephone + 64 3 3252 811 x 8784. Or alternatively, a position description and/or further information on vacancy number 12-04 are available on the Lincoln University website, www.lincoln.ac.nz. Alternatively, please contact Human Resources on 03-325-3687.

All applications should be accompanied by a covering letter, application form and CV. Applications for the above positions will close at 4.00pm on Friday, March 16, 2012.

MAR 12-66-1 ■

Of Note

Rainforest Workshop

K-12 teachers and environmental educators can win one of three \$1,000 scholarships to travel with scientists to one of the most diverse environments in the world. Join group leader Donna Krabill, Norfolk Botanical Garden and scientists Dr. Steve

Madigosky, Widener University and Randy Morgan, Entomologist, Cincinnati Zoo on a rainforest discovery tour from June 29 to July 8, 2012. Open registration through May. Land cost is \$1,850, plus air. Machu Picchu Extension is optional. Academic Credit is available. Land cost is \$850 for

scholarship winners. Submit simple scholarship application by March 8, 2012. For program and scholarship information, visit <http://www.travel2learn.com/amazon.htm> (case sensitive). Contact Dr. Frances Gatz, 1-800-669-6806 or frances@ee-link.net. ■

William Horbaly

Fifty-year AAG member William Horbaly, 91, of Charlottesville, North Carolina, has died.

Horbaly was born in Cleveland, Ohio, on January 24, 1920, the son of immigrants from the former Czechoslovakia. He earned a PhD in geography from the University of Chicago, and a portion of his graduate study was completed at Charles University in Prague.

During the Second World War, Horbaly served as a United States Army tank commander in the 749th Tank Battalion, which received a Presidential Unit Citation for meritorious service in France. Horbaly saw action in France and Germany and was awarded the Bronze Star.

After returning from the war, Horbaly spent his professional career in federal government service with the United States Department of Agriculture. During his time as an Agriculture Attaché, he was assigned to the State Department and was stationed in Moscow for five years and Beirut for four. Upon his retirement from federal service Horbaly was the Assistant Administrator to the Secretary of Agriculture and was in charge of United States Agriculture Attaches stationed overseas.

Sidney Jumper

Sidney R. Jumper, Professor Emeritus of the Department of Geography at the University of Tennessee, passed away on December 9, 2011.



Jumper

Jumper received his PhD in 1960 from the University of Tennessee and joined the faculty of the department later that decade. In 1977 he was appointed Head, a position he held for 18 years. Under his leadership the department added new faculty lines and secured funding for a free-standing geography building located in the center of the campus. He also advocated for increased emphasis on research and graduate education in the department.

In 1986, Jumper and the late Theodore Schmudde established the Tennessee Geographic Alliance, one of seven pilot alliance programs in the United States. Today the Tennessee Geographic Alliance boasts nearly 5,000 members and has spent over \$3.6 million on improving K-12 geography education in Tennessee.

Jumper was active in the Southeastern Division of the AAG (SEDAAG) and served as editor of the *Southeastern Geographer*. His contributions to SEDAAG resulted in his receiving the Honorary Life Membership Award in 1981 and Outstanding Service Award in 1987 from that division. In 1997, Tennessee's governor named Jumper the Tennessee State Geographer. In 2000, Jumper was honored with AAG Distinguished Service Honors. A year later, the National Geographic Society established the Sidney Jumper Grant for Teaching Research in his honor.

For over thirty years, Sidney Jumper's tireless efforts improved the status of our discipline and the quality of geography education at all levels of instruction.

Clyde Woods

Clyde Woods, Associate Professor of Black Studies at the University of California, Santa Barbara (UCSB), died this past summer.

Woods received his PhD in Urban Planning from UCLA where he studied with Ed Soja.

Since his graduate student days, he had been an active member of the geographic community. His research was centered at the nexus of regional planning, African American studies, and social justice. As a longtime member of the AAG, Woods not only sought to focus attention on the plight of poor communities of color, but he also actively encouraged and mentored black geographers in order to diversify the discipline.

Woods was also Director of the Center for Black Studies Research at UCSB. His



Woods

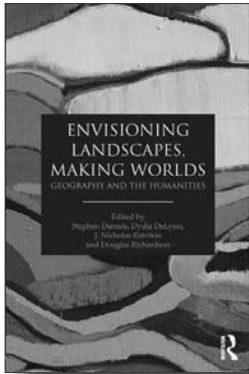
work demonstrated his overarching belief that the purpose of public social science is to explore and strengthen the links between knowledge embedded in communities and the knowledge disseminated by universities. "Clyde Woods was an admired colleague, professor, and student mentor, and he will be deeply missed by all the members of our UCSB family," said Chancellor Henry T. Yang. "Dr. Woods was engaged in two long-term research projects within our Department of Black Studies, one focusing on rebuilding efforts in New Orleans and the other on creating a network of community members and scholars studying race and policy issues in the Los Angeles area. He was also actively involved in Haiti relief efforts; the recent earthquake in Haiti touched him deeply, and he was passionate about helping the people of Haiti." He joined the UCSB faculty in 2005 following appointments at Pennsylvania State University and the University of Maryland.

Woods was the author of two important books, *Development Arrested: Race, Power and the Blues in the Mississippi Delta* (Verso, 1998), an interdisciplinary work that reframed the history of the Mississippi Delta by unearthing and interpreting the blues epistemology of its poor black residents, and *Black Geographies and the Politics of Place*, co-edited with Katherine McKittrick (South End Press, 2007). In addition, he edited a special issue of the *American Quarterly* focused on Hurricane Katrina and its aftermath, "In the Wake of Hurricane Katrina: New Paradigms and Social Visions" (Johns Hopkins University Press, 2010).

At the time of his death Woods had also completed a manuscript entitled, "Development Drowned and Reborn," a study of post-Katrina New Orleans that his colleague and friend, Laura Pulido, will see through the publication process. Finally, Woods was also working on a book on the history of Black Los Angeles, which Ruth Wilson Gilmore and Laura Pulido hope to complete as a collaborative process. If people are interested in working on this project they should contact Ruth or Laura. ■

Submissions for the necrology should be emailed to newsletter@aag.org with "necrology" as the subject line.

Geography and the Humanities



Envisioning Landscapes, Making Worlds

Geography and the Humanities

Edited by Stephen Daniels,
Dydia DeLyser, J. Nicholas Entrikin,
and Douglas Richardson
ISBN 978-0-415-58978-9

Envisioning Landscapes, Making Worlds examines the remarkable resurgence of intellectual interplay between geography and the humanities with

25 contributions by leading scholars. This book is essential reading for those interested in understanding the new synergies emerging from this broad intellectual engagement with meaning and geographic experience, including students, scholars, and interested general readers.

What people are saying about *Envisioning Landscapes*

“This book provides powerful evidence of geography’s intellectual and moral affiliations with the humanities. It boasts an impressive cast of contributors, with elegant and compelling essays that show why creativity, imagination and reflection matter to geographers, and why the insights of geography matter to the humanities as never before.”

— **Professor Felix Driver, Royal Holloway,
University of London, UK**

“For geography, this book vigorously promotes the significance of the powers of spatial and visual representation in evoking landscapes and places. For the humanities, it elegantly maps the variety of ways in which geographical concepts are helping respond to the so-called crisis of representation by grounding texts, performances, and visual art in landscapes and places.”

— **Professor John Agnew,
UCLA, USA**

GeoHumanities

Art, History, Text at the Edge of Place

Edited by Michael Dear, Jim Ketchum,
Sarah Luria, and Douglas Richardson
ISBN 978-0-415-58980-2

GeoHumanities is an exciting new book that examines the humanities’ rapidly expanding engagement with geography’s perspectives, technologies, and core metaphors. With 30 original contributions by well known scholars, artists, architects, activists, and scientists, this interdisciplinary book invites us to explore the many ways that geography has reestablished itself as relevant, exciting, and even inspiring in today’s world.



What people are saying about *GeoHumanities*

“This volume stands at the forefront of one of the most exciting new fields of cross-disciplinary work. The editors have assembled a spectacular array of original contributions from an impressive group of authors, whose work opens new routes into the emerging field known as the geohumanities. It is bound to become a landmark book.”

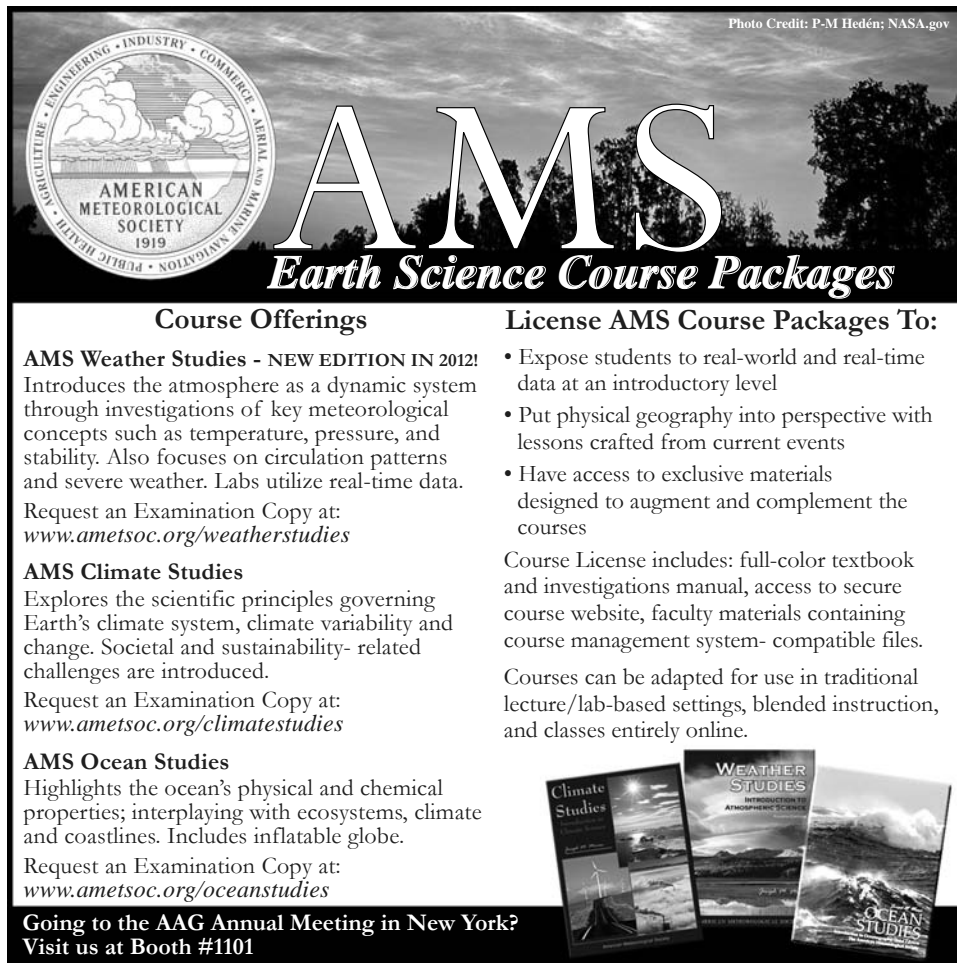
— **Anthony J. Cascardi,
U.C. Berkeley, USA**

“Making a compelling case for re-aligning geography with the humanities, *GeoHumanities* provides a series of richly-interwoven textual, visual and cartographic essays to demonstrate the creative potential of new forms of artistic, literary and historical engagement with place. Issuing a challenge to transcend disciplinary boundaries, to forge novel connections between past and present, and to re-imagine the world in novel ways, the contributors to *GeoHumanities* invite us to explore afresh the politics and poetics of place.”

— **Professor Peter Jackson,
University of Sheffield, UK**

GEOGRAPHY & HUMANITIES SESSIONS DURING AAG ANNUAL MEETING

The 2012 AAG Annual Meeting will include a special track of sessions over three days exploring interdisciplinary work taking place at the intersections of geography and a wide range of humanities and arts disciplines. Sessions in this track will be held throughout the day on Saturday, Sunday, and Monday, with most scheduled for Concourse rooms A, B, and C in the Hilton Hotel. See www.aag.org/humanities for a full schedule of sessions in this track.



AMS
Earth Science Course Packages

Course Offerings

AMS Weather Studies - NEW EDITION IN 2012!
Introduces the atmosphere as a dynamic system through investigations of key meteorological concepts such as temperature, pressure, and stability. Also focuses on circulation patterns and severe weather. Labs utilize real-time data.
Request an Examination Copy at:
www.ametsoc.org/weatherstudies

AMS Climate Studies
Explores the scientific principles governing Earth's climate system, climate variability and change. Societal and sustainability-related challenges are introduced.
Request an Examination Copy at:
www.ametsoc.org/climatestudies

AMS Ocean Studies
Highlights the ocean's physical and chemical properties; interplaying with ecosystems, climate and coastlines. Includes inflatable globe.
Request an Examination Copy at:
www.ametsoc.org/oceanstudies

Going to the AAG Annual Meeting in New York?
Visit us at Booth #1101

License AMS Course Packages To:

- Expose students to real-world and real-time data at an introductory level
- Put physical geography into perspective with lessons crafted from current events
- Have access to exclusive materials designed to augment and complement the courses

Course License includes: full-color textbook and investigations manual, access to secure course website, faculty materials containing course management system-compatible files.

Courses can be adapted for use in traditional lecture/lab-based settings, blended instruction, and classes entirely online.

Photo Credit: P-M Hedén; NASA.gov

Grants & Awards Received

Sarah Haas, a PhD student in geography at the University of North Carolina at Charlotte (UNC Charlotte), has been awarded a 2011-12 Philanthropic Educational Organization (PEO) Scholar Award, a competitive, merit-based award open to U.S. and Canadian women pursuing a doctoral degree or other post-graduate education. The Philanthropic Educational Organization provides educational opportunities for female students worldwide. Haas's biogeographical research on the spread and persistence of an emerging infectious forest disease is currently highlighted on the UNC Charlotte's Graduate School website at <http://graduateschool.uncc.edu>. In addition, Haas's first dissertation chapter, "Forest Species Diversity Reduces Disease Risk in a Generalist Plant Pathogen Invasion" has been accepted for publication in the high profile journal, *Ecology Letters*. She is an advisee of Dr. Ross Meentemeyer. ■

Call for Papers

Applied Geography Conference

Organizers of the 35th Annual Applied Geography Conference, to be held October 10-13, 2012, in Minneapolis, are seeking papers. For details see the conference website at <http://applied.geog.kent.edu> or contact Jay Lee (jlee@kent.edu). Papers given are eligible to be submitted for review for inclusion in the annual conference publication, *Papers of the Applied Geography Conference*.

Beyond Borders with James Baldwin

A call for chapters for an edited book has been issued by the editors of *Beyond Borders with James Baldwin: A Practical Guide for Everyone*. James Baldwin received international acclaim as a writer, novelist, essayist, poet, play-

wright, social critic, and civil rights activist. Geographic perspectives are encouraged. Information on submissions can be found on the Kennesaw State University African and African Diaspora Studies Program webpage under the "Announcements" section (<http://aads.hss.kennesaw.edu>).

Change and Continuity in the Middle East

Rethinking West Asia, North Africa and the Gulf after 2011. This conference will take place on June 11, 2012 at the London School for Economics. Geographers are encouraged to attend. For more information and to submit a paper or panel proposal go to: <https://sites.google.com/site/brismesgs2012>. The deadline for submissions is April 13, 2012.

Pennsylvania Geographer

The editors of *The Pennsylvania Geographer*, a peer reviewed, semi-annual journal of the Pennsylvania Geographical Society, are soliciting material for its Spring/Summer 2012 edition. This will be the 50th anniversary of the journal's continuous publication. The general topic for this issue is "The Pennsylvania Geographer at 50." Editors encourage anyone to submit stories about the journal or the Pennsylvania Geographical Society to share with its readers. Submission deadline is April 1, 2012. Please send your material and/or inquiries to Dr. William B. Kory, Editor, The Pennsylvania Geographer, Geography Department, University of Pittsburgh at Johnstown, Johnstown, PA 15904. Phone: (814) 269-2994 or 2990. E-mail: koryupj@pitt.edu. ■

2012

MARCH

29-30. 43rd Annual South Dakota State Geography Convention. Brookings, SD. www3.sdstate.edu/academics.

APRIL

27-28. AAG-NIH Symposium "Geospatial Frontiers in Health and Social Environments." Howard University, Washington, DC.

MAY

10-12. American Council of Learned Societies (ACLS) Annual Meeting. Philadelphia. www.acls.org/about/annual_meeting.

14-17. Atlantic Geographies. Miami, FL. www.as.miami.edu/ams/atlanticegeographies.

18-19. Envisioning a New Republic—Cartography from 1750-1800. Library of Congress, Washington DC. Contact John Hessler, senior cartographic librarian: jhes@loc.gov.

JUNE

1-3. 2012 EUROGEO Annual Meeting and Seminar. Dublin, Ireland.

10-16. **Geography Faculty Development Alliance (GFDA) Workshop in Early Career Development.** Boulder, CO. www.aag.org/education.

13-16. **AAG Department Leadership Workshop.** Boulder, CO. www.aag.org/healthydepartments.

15-17. Geoinformatics 2012. Hong Kong. www.cpgis.org.

17-22. T3G – GIS Education. Redlands, CA. <http://edcommunity.esri.com/t3g>.

20-22. 2012 UN Conference on Sustainable Development (INCSD) "Rio+20." Rio de Janeiro, Brazil. www.earthsummit2012.org.

21-22. Conference of the Society of South African Geographers. Cape Town. www.ssag.co.za.

JULY

3-5. RGS/IGB Annual International Conference. Edinburgh, Scotland. www.rgs.org.

23-27. Esri International Users Conference. San Diego, CA. www.esri.com/events/user-conference.

27-28. AAG-NIH Symposium "Geospatial Frontiers in Health and Social Environments." San Diego, CA.

AUGUST

26-30. 32nd International Geographical Congress (IGU). Cologne, Germany. <http://igc2012.org>.

SEPTEMBER

16-18. AutoCarto 2012. Columbus, OH. www.cartogis.org.

18-21. **GIScience 2012.** Columbus, OH. www.giscience.org.

OCTOBER

4-6. **Pacific Coast AAG Division Meeting.** Olympia, WA. www.csus.edu/apcg.

4-7. National Conference on Geographic Education (NCGE). San Marcos, Texas. www.ncge.org.

10-13. Applied Geography Conference. Minneapolis, MN. <http://applied.geog.kent.edu/appliedgeog>.

11-13. **Great Plains/Rocky Mountains AAG Division Meeting.** Provo, UT. <http://fast.ucdenver.edu/rmgpaag>.

13-20. DISCCRS VII, Interdisciplinary Climate Change Research Symposium. Colorado Springs, CO. <http://disccrs.org>.

19-20. **NESTVAL AAG Division Meeting.** Farmington, ME. <http://nestvalonline.org>.

24-26. Race, Ethnicity and Place Conference. San Juan, PR. <http://rep-conference.binghamton.edu>.

25-27. **East Lakes AAG Division Meeting (jointly with West Lakes).** DeKalb, IL. www.eastlakesaag.org.

25-27. **Southwest AAG Division Meeting.** Las Cruces, NM. www2.geog.okstate.edu/swaag.

NOVEMBER

2-3. **Middle Atlantic AAG Division Meeting.** Salisbury, MD. <http://sites.google.com/site/aagmad>.

2-3. **Middle States AAG Division Meeting.** Shippensburg, PA. <http://departments.bloomu.edu/geo/msd>.

8-10. From the Outside In: Sustainable Futures for Global Cities and Suburbs. Hempstead, NY. www.hofstra.edu/sustainablefutures.

15-18. American Studies Association Annual Meeting. San Juan, Puerto Rico. www.theasa.net/annual_meeting.

18-20. **SEDAAG Division Meeting.** Asheville, NC. www.sedaag.org.

2013

APRIL

9-13. AAG Annual Meeting
Los Angeles, CA. www.aag.org.

2014

APRIL

8-12. AAG Annual Meeting
Tampa, FL. www.aag.org.

2015

APRIL

21-25. AAG Annual Meeting
Chicago, IL. www.aag.org.

Specialty Group News

Applied Geography SG

Michael N. DeMers, New Mexico State University, will present the James R. Anderson Distinguished Lecture in Applied Geography at 2:40 p.m. on Saturday, February 25, at the

upcoming 2012 AAG Annual Meeting in New York City. DeMers was awarded the Anderson Medal of Honor in 2010 by the AAG Applied Geography Specialty Group, for his outstanding contributions to the field

of applied geography. The award is named in honor of Dr. James Anderson, who directed the national land use and land cover program while he was the Chief Geographer of the U.S. Geological Survey in the 1980s. ■

Association of American Geographers
1710 Sixteenth Street NW
Washington, D.C. 20009-3198

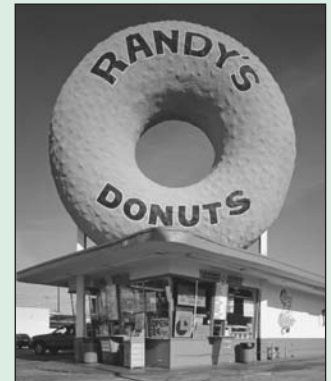
Periodicals
postage paid
at
Washington,
DC

Publications Mail Agreement No. 40717519 Return undeliverable Canadian addresses to: PO Box 503, RPO West Beaver Creek, Richmond Hill, ON L4B 4R6

2013 AAG Annual Meeting April 9-13, Los Angeles

Make sure to mark your calendar in anticipation of the 2013 AAG Annual Meeting, to be held in Los Angeles. In addition to many diverse scholarly and research presentations from across the broad range of the discipline, the conference will include many high profile speakers, invited guests, and panelists from both inside and outside of the discipline, including the private sector and government agencies. Many unique local field trips and hands-on workshops designed specifically for geographers will also be available.

The AAG call for papers will be released in August, and abstracts will be accepted through late October. A special rate will be available for registered participants at the conference hotel, but attendees should plan on booking early. The "City of Angels" is within easy reach of international visitors through Los Angeles International Airport (LAX). We look forward to seeing you there.



Treasures of America's cultural landscape are on full view in Los Angeles.

CREDIT: CAROL M. HIGHSMITH

Call for Nominations: AAG Honors and Nominating Committees

The AAG Council seeks nominations for candidates to serve on the AAG Honors Committee and the AAG Nominating Committee. The Council will prepare the final slate of candidates for both committees from the nominations received, and committee members will be elected by a vote of the AAG membership.

Nominations for the Honors Committee may include persons (i) from the membership at large and (ii) from those members who have previously received AAG Honors

(a list of previous honorees can be found in the *AAG Guide to Geography Programs in the Americas* and online at www.aag.org/grant-sawards). Honors Committee members serve for two years and are responsible for making recommendations of awardees for various AAG Honors for Council consideration. Nominating Committee members serve for one year. The committee recommends to the Council the slate of candidates for the AAG Vice President, President, and National Councillor elections.

If you wish to nominate yourself or other qualified individuals for service on these committees, please contact AAG Secretary Jenny Zorn by **June 30, 2012**. Nominations should include the contact information of the nominee, a brief biosketch, and indication that the nominee is willing to be placed on the slate of candidates for election by the AAG membership.

Please send nominations by email to AAG Secretary Jenny Zorn at jzorn@csusb.edu.