

In This Issue



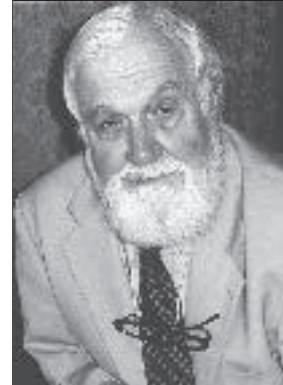
From the Meridian	2
President's Column	3
Award Deadlines	15
Call for Papers	16
Geographic Centers	16
Grants & Awards	17
Grants & Competitions.....	18
New Appointments.....	19
Member Profile	20
Necrology	21
Members of Note.....	21
New Members.....	22
Specialty Group News	24
Quarter Century	26
Jobs in Geography.....	28
Books Received.....	38
Events	39

Centennial "Hall of History" to Feature Geographers on Film

One of the special events at the Centennial Meeting will be the AAG "Hall of History," which will feature, among many exhibits, the *Geographers on Film* (GOF) series. GOF is an outstanding collection of videotaped interviews of prominent geographers (plus other holdings) on the history of geography, produced by Maynard Weston Dow, Professor Emeritus from Plymouth State College.

This remarkable collection will be presented in the AAG's Centennial Theater, in the Hall of History, where Wes Dow, Geoffrey Martin, and other AAG historians and archivists will be available to discuss the films and answer questions.

The collection recently obtained a permanent home with the assistance of the Michigan State University Library. The Library will be digitizing several of the videotapes for Internet access, the first of which is "Women Geographers on



Dow

Film: A Retrospective: Survival in the Male-dominated Academe" (1990).

The experience that the MSU library has gained from maintaining the Vincent Voice Library, one of the most significant collections of voice messages in the world,

has assisted in the establishment of the *Maynard Weston Dow and Nancy Freeman Dow Geographers on Film Collection*, under initiatives by Dr. Michael Seadle (historian and head of the MSU Library's Digital and Multimedia Center) and an ad hoc working group

Continued on page 6



Mummers Bands, with their outrageous costumes and brash music, are a Philadelphia tradition.

Photo by Edward Savaria, Jr., and used with permission of the Philadelphia Convention and Visitors Bureau.

GAIA GALA

AAG's 100th Birthday Celebration

Join fellow geographers from around the world in celebrating the AAG's 100th birthday at a once-in-a-lifetime ball. The "Gaia Gala," also known as the "Geography Party of the Century," will be the premier social event of the Philadelphia meeting. All Centennial Meeting registrants are invited to attend this free extravaganza in the Grand Ballroom in Philadelphia on Tuesday

evening, the 16th of March. Hors d'oeuvres, drinks, and a huge birthday cake are included and entertainment will feature a premier dance band, a Mummers band, and many other special activities. Don't miss it! Register online for the Centennial Meeting today at www.aag.org. For more information, contact Oscar Larson at meeting@aag.org.

The 2004 Centennial Meeting paper submission deadline is 9 October 2003.

AAG Newsletter of the Association of American Geographers

Douglas Richardson, Publisher

Amy Jo Woodruff,
Director of Publications

Heather M. Baker, Editor

Megan D. Nortrup,
Editorial Assistant

AAG Voice 202-234-1450

AAG Fax 202-234-2744

newsletter@aag.org

www.aag.org

USPS 987-380 ISSN 0275-3995

The AAG Newsletter ISSN 0275-3995 is published monthly by the Association of American Geographers, 1710 16th Street NW, Washington, DC 20009-3198. The cost of an annual subscription is \$25.00. The subscription price is included in the annual dues of the Association. Not available to non-members. Periodicals postage paid in Washington, DC. All news items and letters, including job listings, should be sent to the Editor at the address below or to newsletter@aag.org.

All Newsletter materials must arrive at the Association office by the 1st of the month preceding the month of the publication. This includes job listings. Material will be published on a space available basis and at the discretion of the editorial staff.

When your address changes, please notify the Association office immediately. Six weeks notice is necessary to insure uninterrupted delivery of AAG publications. To assist the AAG office in your address change, include the address label with your change of address.

Postmaster: Send address changes to AAG Newsletter, 1710 16th Street NW, Washington, DC 20009-3198, or address@aag.org.

AAG Director of Educational Affairs Osa Brand Retires

On behalf of the staff, Council, and membership of the AAG, I would like to devote this column to honoring the long and valuable service of Dr. Osa Brand, who is retiring after thirteen years as Director of Educational Affairs at the AAG. Osa joined the AAG in January 1990.

Her major initial contributions were to help develop and achieve funding for a project initiated by Saul Cohen, then AAG President, that resulted ultimately in the production of the ARGUS and ARGWorld curriculum materials (see page 6). Other projects included working with Dr. Cohen and a team of



Brand

geographers from several universities to develop and manage a three-year undergraduate minority recruiting initiative; collaboration with Phil Gersmehl and Joseph Stoltman on curriculum materials exchange programs that resulted in the translation of the ARGUS materials to Russian and Japanese; and support of an initiative led by Susan Hanson to develop active-learning teaching modules on the human dimensions of global change. Osa also had advisory roles in several educational projects developed by other organizations, including the Power of Place public television series.

As an AAG representative on the GENIP (Geography Education National Implementation Project) steering committee, Osa interacted regularly on educational issues with the National Council for Geographic Education, the American Geographical Society, and the National Geographic Society. She enjoyed helping to organize the AAG's annual World Geography Bowl and working with other AAG staff to manage the Visiting Geographical Scientist Program. With a strong interest in community college geography, she also helped establish the Community College Affinity Group and

supported a survey of community college geography, which resulted in an AAG publication by Joan Clemons.

Asked for examples of the impact that some of the AAG educational projects have had, Osa noted that the ARGUS and ARGWorld distribution contract with Holt, Rinehart and Winston will ensure that the materials reach well over 200,000 teachers over the next four years. As a result, those projects can help change the way geography is taught in many secondary schools. She was also pleased to be able to say that the undergraduate minority recruitment project made a significant difference

in the lives of the participating students. Many of them described the experience as a major turning point that opened career possibilities they had never before considered. A large number of the students went on to graduate programs and careers in geography.

Osa is planning on a "half-time retirement." She will continue to consult with the AAG on a flexible basis, and will work part-time representing the National Council for Geographic Education from her home in the Washington, DC area. In both roles she will continue to be active in geography education at the national level, and will coordinate with the AAG's new Educational Affairs Director, Dr. Michael Solem (see page 8).

Osa also plans to spend more time with her family, especially her new grandson. Please join me in thanking Osa for her exceptional contributions to the AAG and to geography education, and in wishing her great enjoyment in her "semi-retirement" years ahead. She has been a joy to work with and a wonderful ambassador for geography and the AAG. We thank you for sharing all of this with us, Osa. ■

Douglas Richardson
drichardson@aag.org

Looking Toward the AAG's Centenary

The AAG is on the threshold of turning one hundred years old. Why should we care? After all, the number 100 has a veneer of significance only because we happen to be inheritors of a base-ten numbering system. It could certainly be argued that a 100th anniversary is no more important than a 99th or 101st one.

Yet neither organizations nor societies can function without some common understandings, which are renewed (and sometimes recast) through agreed-upon rituals. Institutions ignore rituals at their peril; if opportunities for reflection and celebration are missed, the invisible bonds that hold them together will almost certainly unravel. Surely, then, we should make the most of the opportunity before us in this centennial year.

I would urge each of you to find ways to mark the AAG's centenary. Plan a special event in your department or institution (and a get-together at the Annual Meeting); commit yourself to writing something on the importance of geography for a general audience (the subject of a future column); contribute to the AAG's Centennial Fund; or advance a geographical initiative of importance to you. If even half of our membership does something special, what an anniversary it will be!

The AAG is planning a variety of special events to mark the centenary, many of which will take place in conjunction with our annual meeting in Philadelphia on 14-19 March 2004. The upcoming annual meeting promises to be truly exceptional in size, scope, and substance. Many are working toward this end, including our central office, the AAG's Centennial Coordinating Committee (chaired by Stan Brunn and Don Janelle), the Local Support Committee (chaired by Arlene Rengert and Denyse LeMaire), and the

Local Program Committee (chaired by Percy Dougherty).

The Annual Meeting is undoubtedly our most prominent ritual in the AAG. A landmark anniversary provides an opportunity for an annual meeting that is even broader in scope than usual. (Some of you may still remember the special 75th Annual Meeting.) A variety of special events are planned, ranging from a set of high-profile plenary sessions to a celebratory evening gala. To commemorate the AAG's first 100 years, the meeting will include a "hall" showcasing historic items and a fascinating set of films put together by Wes Dow from the "Geographers on Film" series. A number of specialty groups are organizing sessions focused on where we are and where we are going. Additional events are being planned around the meeting, including an exhibit entitled *The Earth Exposed* by geographer Stephen S. Young (Salem State College) at Philadelphia's Kline gallery and the hanging of a commemorative plaque at the University of Pennsylvania, where the AAG first met in 1904.

To accommodate all this, the Centennial Meeting will run a day longer than usual. The registration fee will also be higher, to help defray the cost of special events and two commemorative publications that all attendees will receive. But I hope you will plan to attend as much of the meeting as you can. Come and give a paper—or just come (to register, visit www.aag.org/annualmeetings/index.htm). Even though these are not the easiest times financially, and travel uncertainties abound, I hope most of you will include the AAG's Centennial gathering in your plans. This is not a meeting to be missed!

Of course, the centennial celebration will not be confined to Philadelphia. Special forums will appear in the *Annals* and *The Professional Geographer*; the AAG will release a long-range plan that comes out of a multi-year planning process; and the staff, officers, and Council members are working to capitalize on the centenary to advance specific AAG projects and initiatives.

By its very nature, a centennial observance signals a concern with tradition, but it need not be obsessed with the past. Some of our members have urged a forward-looking approach to the centennial. I share the spirit behind those urgings. At the same time, I would caution us against emulating

the lack of interest in history and context that is so frequently on display in public decision-making today. Neil Smith's new book, *American Empire: Roosevelt's Geographer and the Prelude to Globalization* (University of California Press, 2003), provides a powerful reminder of just how important an understanding of the past can be in forming an intelligent assessment of the present.

As we approach the AAG's centennial, then, let us look forward to the future while honoring and learning from our past. The story of our past has its ups and downs, but to ignore it is to risk falling into a faddish futurism. The centenary presents us with an opportunity to assess our intellectual and social community. It is an opportunity we should embrace with enthusiasm as we embark on our second century. ■

Alexander B. Murphy
abmurphy@oregon.uoregon.edu



Murphy

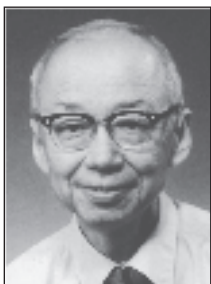
Check out Philadelphia and environs at *PlacesOnline*:
www.placesonline.org.

Centennial Meeting to Feature Cross-Cutting Plenary Sessions

Among the many highlights of the forthcoming AAG Annual Meeting in Philadelphia will be a set of plenary sessions of unusual breadth and scope. Over the past several months I have worked closely with the Council to develop a line-up of plenary sessions that will both help us mark the AAG's centenary and function as a set of focal points for our meeting. I have long been concerned that we need to do more to foster cross-disciplinary dialog and interaction at our annual meetings. The centenary meeting provides a wonderful opportunity to promote this end through a series of plenary sessions that raise issues of concern to a wide range of geographers.

The meeting will kick off with an expanded opening session that will include commentaries on Philadelphia and AAG history, as well as an opening keynote address from the Director of the National Science Foundation, Rita Colwell. Each subsequent day of the conference (except the last day) will be capped by a high-profile plenary session. Three of these will address issues that are particularly appropriate for an organization celebrating its centennial. The other one (17 March) will address a central concern of my presidency.

The following sessions are being planned:



Tuan

15 March

Where We Have Come From and Where We Stand: Views of American Geography on the AAG's 100th

This plenary session features the

reflections of prominent senior members of our profession who have significantly influenced the discipline's development and growth. Participants will comment on the development of American geography over the past 100 years, as well as its current standing. The speakers will be:

- Yi-Fu Tuan
- Michael Goodchild
- Susan Hanson
- M. Gordon Wolman



Sachs

16 March

The AAG at 100: External Perspectives on Geography's Status and Potential

This plenary session features individuals who have had strong ties to geography, but who can

provide an outsider's view of the discipline's standing. The speakers will be:

- Jeffrey Sachs
- Cynthia Enloe
- Jack Dangermond (invited)
- Gilbert Grosvenor



Gilmore

17 March

Raising Geography's Profile in Public Debate

This plenary session features geographers who, in different ways, have worked to promote a larger understanding

of the nature and importance of geographical inquiry. Each will comment on the importance (and the challenge) of articulating to a broad audience

what geography is or can do. The speakers will be:

- Harm de Blij
- Ruth Gilmore
- Derek Gregory
- Bill Turner



Kwan

18 March

Geography in the Twenty-First Century: Where Do We Go From Here?

This plenary session features geographers at different career stages who are shaping the development of the discipline in important ways. Each will comment on the future of geography on the occasion of the AAG's centenary. The speakers will be:

- Eric Sheppard
- Diana Liverman
- Bruce Rhoads
- Mei-Po Kwan
- Don Mitchell
- David Skole

Collectively, this set of plenary sessions will provide a wonderful opportunity to consider the nature and standing of American geography on the occasion of the AAG's centenary. The participants are drawn from many reaches of the discipline, and their remarks should provide us with much to contemplate and discuss. The plenary sessions are one of many reasons why the Philadelphia meeting is not one to miss. ■

Alec Murphy, AAG President
abmurphy@oregon.uoregon.edu

NSF Director Rita Colwell to Keynote Centennial Meeting

The AAG's Centennial Meeting will be packed with special sessions, events, and luncheons that feature a number of distinguished scholars on engaging and timely topics. Collectively, they will examine geography's history, its evolution and future, and address the roles geography plays in both society and the academy.

Dr. Rita Colwell, Director of the National Science Foundation, will present the keynote address during the Opening Session, Sunday, 14 March.

Dr. Colwell has spearheaded NSF's efforts to boost science education, interdisciplinary research, and increased participation of women and minorities in science. She will address trends in funding and research for science at the NSF, and her perspective on the future. ■



Colwell

NAS Director Bruce Alberts to Lead Centennial Meeting Forum

Bruce Alberts, Director of the National Academy of Science, will lead a special noontime plenary focusing on "Geography in the Academies," Monday, 15 March. Dr. Alberts will discuss issues such as the importance of integrated science and the current and future role of the geographical sciences as one component of integrated human-environment and spatial sciences. He will also address why geography resides where it does in the NAS structure, the role of geography on NRC Boards, Panels, and

Committees, the Committee on Geography (COG), the Mapping Science Committee, and other major initiatives underway, such as the Panel on Sustainability. Other panel participants will include prominent geographers who are members of the NAS and its committees. ■



Alberts

WorldMinds Celebrates Geography's Centennial

WorldMinds: Geographical Perspectives on 100 Problems, edited by Don Janelle (University of California Santa Barbara), Barney Warf (Florida State University), and Kathy Hansen (Montana State University), is one of two commemorative publications planned in celebration of the Association's Centennial. This one-

hundred-chapter book is intended to showcase how geographers use their tools and theory to address some of the significant problems facing society. Authors were asked to document the contributions of geography in adding insight and solutions to pressing environmental, economic, social, political, and scientific problems.

The volume includes 100 contributions from nearly 150 authors and co-authors that range from graduate students to senior professors, as well as government and business practitioners, theorists, methodologists, teachers, and applied geographers. The topics span a broad range of issues from AIDS to the micro-climatologic of cities. The volume is divided into ten-sections that stress an action-oriented application of geographical perspectives that cut across different kinds of societal concerns and disciplinary perspectives, each with an average of ten chapters. Section titles include: Mixing Geography with Politics; Addressing Human Needs: Health and Education; Enhancing Life in Cities; Integrating Local and Global Economies; Maintaining Healthy Ecosystems; Balancing Environment with Economy; Unmasking Dangerous Environments; Activating Physical Geography; Mobilizing Geographical Technologies; and (Re)Assessing Culture and Identity.

The editors and publisher see *WorldMinds* as a broadly representative reflection of the discipline, aimed at accessibility to a range of readers and relevance to anyone requiring a comprehension of what geography has to offer for education, science, and society. The quantity and succinctness of the chapters makes it ideal as a general reader to supplement textbooks in the full range of courses found in undergraduate programs, as a volume suited for a pro-seminar, and as a broad exposure to a geography that is engaged with discovery, interpretation, and problem solving.

For more information, the table of contents, and a list of contributors, see www.aag.org/annualmeetings/generalinfo/worldminds.htm. All registrants of the AAG Centennial Meeting will receive a copy of this book (and other Centennial publications) at no charge. ■

Don Janelle, Co-Chair
Centennial Coordinating Committee
janelle@geog.ucsd.edu



ARGUS and ARGWorld To be Distributed by Holt, Rinehart and Winston

Holt, Rinehart and Winston, a major textbook publisher, has begun distributing the ARGUS and ARGWorld materials under a five-year contract with the AAG.

ARGUS (Activities and Readings in the Geography of the United States) has been available from the AAG for several years. In its new format, all of the printed materials (concept/skill-oriented student activities, a short text, case studies, teacher guidelines, and overhead transparencies) are included in a large ring-binder. The interactive CD-ROM, which explores a variety of geographic topics and concepts in regional settings, is sold separately. Funded by the National Science Foundation, the ARGUS project was directed by Phil Gersmehl and involved a large number of other geographers and classroom teachers. The materials were designed for high school students,



but are also used in a large number of college courses.

ARGWorld (Activities and Resources for the Geography of the World) was also funded by the National Science Foundation. The project was recently completed, with materials that are similar to those of ARGUS. The CD-ROM contains many animations that help explain geographic concepts and invite students to explore a variety of geographic topics worldwide, to which more than 50 geographers contributed personal photographs. Instead of a resource binder, the activities and teacher support materials are housed on a separate CD-ROM; teachers select and print the components that meet their needs. Developed by Phil

Gersmehl, David Hill, Joseph Stoltman, Jim Young, and numerous other geographers and classroom teachers, the materials offer concept and skill-based approaches to the World Geography course that most schools offer in 7th to 9th grade. Both ARGUS and ARGWorld also support most topics covered in the Advanced Placement Human Geography course.

Over the next four years, Holt, Rinehart and Winston will distribute 100,000 of each of the ARGUS and ARGWorld interactive CD-ROMs with the teacher's editions of the American history and world geography textbooks. Since both sets of materials will also be marketed through the HRW catalog and website, they have the potential to affect the way many students learn geography. See the AAG website, www.aag.org, for more information about the materials, or contact HRW to order ARGUS or ARGWORLD at 1-800-HRW-9799. ■

Continued from page 1

including digital librarian and historian Dr. Lisa Robinson.

As host to the Dow Collection, the MSU Library will carry out a program to preserve the original films and videotapes, digitize the sound and selected video content, and disseminate the collection on the Internet as part of its Vincent Voice Library. These steps will enhance the value of the collection as a teaching resource and as a searchable research archive that is accessible throughout the world. In addition, the collection will be available for viewing in analog format at the Vincent Voice Library. Arrangements to do this can be made through Elizabeth Bollinger, who currently manages the Library's effort to preserve and disseminate the Dow Collection. She can be reached at bollinger7@msu.edu.

The Dow Collection features contributors whose work spans much of 20th Century geography. It includes 298 interviews with prominent geographers over a period of nearly 35 years (about 25 percent of whom are now deceased). It also includes 246 recorded conference sessions and special events dealing with the history of the discipline and the development of geographical thinking in America and internationally. The scope of this collection makes it a significant contribution to the history and sociology of science and a treasure of intellectual discourse. Over the years, GOF has received financial support from the Association of American Geographers, the National Science Foundation, Plymouth State College, and the Marion and Jasper Whiting Foundation of Boston. This support has supplemented the modest rental fees that have permitted Wes

and Nancy Dow (series videographer since 1982) to create a unique archival resource that provides understanding to the intellectual history of our discipline. Wes Dow maintains more complete details on the contents of the collection at <http://oz.plymouth.edu/~mwd>.

On behalf of all geographers and others interested in the history of geography, the AAG Centennial Coordinating Committee (chaired by Don Janelle and Stan Brunn) expresses its gratitude to Wes and Nancy Dow and to the Michigan State University Library, and encourages you to take advantage of the opportunity to view and discuss many of these fascinating films at the AAG Centennial Meeting's Hall of History. ■

Don Janelle, Co-Chair
Centennial Coordinating Committee
janelle@geog.ucsb.edu

WVU Meets KSU Centennial Fund Challenge

The Department of Geology and Geography at West Virginia University has responded to the Kansas State University Geography Department's challenge with a contribution of \$1,200 to the Advancing Geography Centennial Fund. This past spring, KSU Geography issued the challenge to departments nationwide, encouraging them to allocate departmental or institutional funds to match or exceed their pledge of \$1,000. Individual faculty members who wish to contribute are encouraged to pledge separately.

For more information about the Advancing Geography Centennial Fund visit www.aag.org/CF/index.html or contact Robert Andelman at randelman@aag.org or 202-234-1450. ■

National Geographic Society Internships

Since the summer of 1981, the National Geographic Society (NGS) has offered geography internships to geography and cartography majors at U.S. colleges and universities. These internships are offered to students who are in their junior or senior undergraduate year or in a master's degree program at the time of application. This year the internship program, directed by Bob Dulli, Deputy to Chairman Gil Grosvenor, hosted 30 students: 11 in the spring, 10 in summer, and 9 in fall.

National Geographic interns are treated as equals to permanent employees. Students are assigned to departments according to their skills and background, and contribute to the work of different divisions through such tasks as map making, fact researching for books, conference organizing, and article writing. In addition to these logistical duties, interns also attend meetings with people of different backgrounds and departments at NGS, thereby learning more about how the society works, and getting inspiration for their future careers. This summer, interns came from the Calvin College, University of Nebraska, Frostburg State, Appalachian State, Berkeley, the University of Texas, Illinois State, Florida Atlantic, Brigham Young, and Kansas State.

Application materials and guidelines are sent to every geography department chair in the country in August. For more information, contact Bob Dulli, at bdulli@ngs.org. ■

Lenka Soukupova
Summer 2003 NGS Geography Intern

ADVANCING GEOGRAPHY CENTENNIAL FUND

I (we) pledge to contribute _____ to the Association of American Geographers as part of the Advancing Geography Centennial Campaign.

Giving levels include:

- | | |
|---|-------------------|
| <input type="checkbox"/> \$500 to \$999 | Scholars Circle |
| <input type="checkbox"/> \$1,000 to \$4,999 | Millennium Circle |
| <input type="checkbox"/> \$5,000 to \$9,999 | Century Circle |
| <input type="checkbox"/> \$10,000 to \$24,999 | Explorers Circle |
| <input type="checkbox"/> \$25,000 and above | Leadership Circle |

This gift will be made as follows:

Total amount enclosed: \$ _____

Plus annual payments of: \$ _____

If you intend to fulfill your pledge through a gift other than cash, check, or marketable securities, please check:

- credit card bequest insurance
 real estate other

Credit Card: Visa MasterCard

Account Number _____

Name on Card _____

Expiration Date _____

Signature _____

- My (our) gift will be matched by my employer

I would like my gift to go toward:

- Advancing Geography Centennial Endowment Fund
 AAG Infrastructure Capital Fund
 Private/Public Membership Development Fund
 Fund the Fundraising Program
 Centennial Meeting Fund
 Enhancing Diversity Fund
 Other _____

Name _____

Address _____

Phone _____

Date _____

Please send this pledge form to:

AAG Advancing Geography Centennial Fund
1710 Sixteenth St. NW, Washington, DC 20009

John Brinckerhoff Jackson Prize

The Jackson Prize was established to encourage and reward American geographers who write books about the United States that convey the insights of professional geography in language that is interesting and attractive to a lay audience. The prize, which carries an award of \$1,000 to the author, is administered by the Association of American Geographers.

Eligibility: J.B. Jackson and his friends established the prize to recognize American geographers who write serious but popular books about the human geography of the contemporary United States. The prize is restricted to books written by geographers, with preference given to those by U.S. citizens or permanent residents. Textbooks, dissertations, and articles are ineligible. Special consideration will be given to books that are carefully designed, appropriately illustrated, and physically appealing. The selection committee reserves the right to make no award

in a particular year. Awards are announced in conjunction with the Annual Meeting of the Association of American Geographers.

Submissions: Publishers are invited to submit entries for the Jackson Prize competition, and should forward one copy of the published book before **5 December 2003** to each of the four committee members: Michael P. Conzen (chair), Committee on Geographical Studies, University of Chicago, 5828 S. University Avenue, Chicago, IL 60637-1583; Karl B. Raitz, Department of Geography, University of Kentucky, Lexington, KY 40506-0027; Richard Francaviglia, Center for Southwest Studies, Box 19497-Central Library, University of Texas at Arlington, Arlington, TX 76019-0497; and Susan Hardwick, Department of Geography, University of Oregon, Eugene, OR 97403-1251.

Inquiries: For more information about the Jackson Prize, contact Michael P.

Conzen (chair) at 312-702-8308 or m-conzen@uchicago.edu.

Concerning the Jackson Prize: J. B. Jackson founded the magazine *Landscape* in 1951 and remained its owner and editor until 1968. After he retired as editor, he spent more than a decade writing about landscape and teaching celebrated courses in the history of vernacular landscapes at Berkeley and Harvard. The Jackson Prize of the AAG is dedicated to encouraging the kind of thinking and writing to which J. B. Jackson devoted much of his life: to encourage Americans to look thoughtfully at the human geography of their own country; to try to understand how that geography came to be and what it signifies; and to convey that understanding to the public at large.

For more information and a list of previous winners, see www.aag.org/Grantsawards/Jacksonprize.html. ■

The 30th Congress of the International Geographical Union

IGC-UK Glasgow
15-20 August 2004

The academic program and registration details for the six days of the IGC-UK Glasgow 2004 will be available shortly at www.meetingmakers.co.uk/IGC-UK2004. The program will include all but one of the IGU Commissions. It will incorporate the 2004 Annual Conference of the Royal Geographical Society (with the Institute of British Geographers) together with the involvement of a wide range of other bodies and a major geomorphology conference "Geomorphology and Sustainability: Towards a Sustainable Future."

Glasgow is one of Britain and Europe's most dynamic and lively cities. The city grew up around the cathedral founded by St. Kentigern in about 543 AD. The current Glasgow Cathedral is the only mainland

Scottish cathedral to have survived the Reformation. From these ecclesiastical origins, Glasgow became an educational center—the University of Glasgow was established in 1451—and a town founded on trade. In the eighteenth century, trade with the Americas established Glasgow's reputation as one of Europe's leading mercantile centers. In the following century, the city was the hub of an industrial region built on iron and coal: shipbuilding, heavy engineering, textiles, and munitions.

Glasgow's past is ever present in its urban fabric and, like many world cities, Glasgow is building a vibrant post-industrial image for its future. The Merchant City—a planned 18th-century development—sits between the Cathedral and George Square. The city has outstanding 19th-century buildings, reflecting its claim as 'the second city of the Empire.'

Home to three universities, Glasgow was recognized as European City of Culture in 1990, and, in 1999, as the U.K.'s City of Architecture and Design.

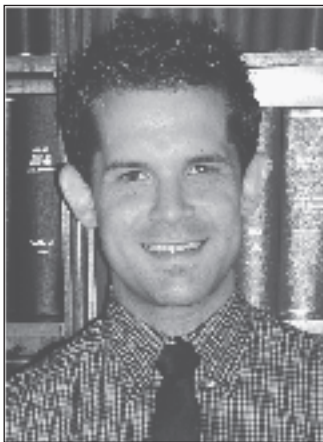
City tours and other events during the Congress will be available. But Glasgow has so much to discover: its lively musical cultures, the world-famous Burrell Collection, the Scottish Ballet and Opera, dynamic theatre and orchestra companies and two of Europe's leading football teams. Above all, it's renowned for its citizens—friendly, witty, welcoming.

The IGC-UK Glasgow 2004 will be a major meeting—a 'Festival of Geography'—with an outstanding range of academic and associated activities involving many of the world's leading geographical authorities and organizations. Further details are available at www.meetingmakers.co.uk/IGC-UK2004. ■

Michael Solem Joins AAG as New Educational Affairs Director

I am very honored to join the AAG as Educational Affairs Director. My predecessor, Osa Brand, did an exemplary job leading the AAG's educational initiatives. Let me be among the first to thank Osa for her outstanding service to the discipline.

I would like to take this opportunity to introduce myself for those of you who may not know me. I am a geographer with interests in faculty development, international education, and instructional technology. I completed a dissertation in geography education under the tutelage of Dave Hill at the University of Colorado, Boulder. Prior to joining the AAG staff, I was a faculty member at



Solem

Southwest Texas State University. My latest project is designing an online Center for Global Geography Education, funded by the National Science Foundation.

I deeply believe that geography can make a positive difference in a person's outlook on life. Geography delivers a sense of wonder

for the world that, once experienced, engages the heart and mind as one, and teaches us that, as Kropotkin once remarked, "all of us are brethren, whatever be our nationality." More than a century later, those words endure with

undiminished power and relevance, and they remind me of why I decided to become a geography educator in the first place.

As the new AAG Educational Affairs Director, I will commit my energies toward building upon the progress made in geography education over the past decade. I am proud to have worked with many of you on research and teaching projects, and I look forward to having a productive relationship with new colleagues in the years ahead. Together, we can ensure the brightest of futures for geography education, and by proactively attending to important policy issues, and through creative curriculum development and research, we will do so. ■

Michael Solem
msolem@aag.org

UCGIS Requests Comments on Model GIS Curricula

The University Consortium for Geographic Information Science (UCGIS) task force reported on its efforts to define and develop closely articulated geographic information science and technology (GI S&T) model curricula at the summer assembly in Asilomar, California. The group is working to define, and prepare for implementation, closely linked model curricula that are intended to provide a baseline for the restructuring of existing undergraduate programs in the area of GI S&T in the United States as well as for the efficient establishment of new educational activities.

The current model curricula are being developed as an efficient, flexible, multi-path structure supporting four-year undergraduate programs in the United States. The flexibility of multiple paths, each corresponding to some specific educational

outcome ranging from general education to the specialized education of professionals, will address the needs of a number of interdisciplinary groups and permit easy adaptation to varying institutional goals and resources. It is also anticipated that future development of the model curricula will make them appropriate for community colleges and non-US universities and colleges.

The Task Force has adopted a view emphasizing a number of curricular "paths" that may enjoy a number of common features but lead to significantly different outcomes for the undergraduate student. The interdisciplinary nature of GI S&T is reflected in the divergent academic outcomes that reflect the desires of students working in this area.

The goal is the dissemination and adaptation of curricula that will result in

more highly and relevantly educated graduates, greater consistency in GI S&T degree-granting programs, and increased communication across academic disciplines with an interest in GI S&T.

The ultimate success of any such curricula development effort depends upon the active participation of a significant component of the GI S&T community including both academics and practitioners. UCGIS invites you to review the report and comment through an on-line survey. Both the Strawman document and the survey can be found in the "What's New Section" at www.ucgis.org or directly at www.ucgis.org/priorities/education/strawmanreport.htm.

For further information, contact Susan McDonald Jampoler, UCGIS Executive Director, at execdir@ucgis.org, or Libbie Wentz at wentz@asu.edu. ■

AAG Grants and Awards

Anne U. White Fund

Deadline: 31 December 2003

In 1989, Gilbert and Anne White donated a sum of money to the Association of American Geographers to establish the Anne U. White Fund. Gilbert White and other donors have subsequently added substantially to the original gift. The Fund's income is to be used to encourage field research conducted by a member of the Association jointly with her or his spouse.

Anne Underwood was a native of Washington, D.C. who attended Madeira School and Vassar College, class of 1941. At Vassar she studied American history and economics. She met Gilbert White in Washington and they decided to marry, but only after the uncertainty of his service as a conscientious objector was resolved. That came after he returned from detention in Germany in 1944.

She meanwhile had held posts with the Program Surveys of the U.S. Department of Agriculture under Rensis Likert, Director of the first of the national opinion surveys, and then as a field investigator for the National Labor Relations Board.

Following their marriage in 1944, they lived in Philadelphia (1944-46), Haverford College (1946-55), the University of Chicago (1956-69), and the University of Colorado (1970-89). After their youngest child went off to boarding school, Anne joined with Gilbert in field studies of domestic water use in East Africa. Out of this came a monograph they authored with David J. Bradley of the London School of Tropical Hygiene and Medicine. Then followed a series of studies on water supply and health that she completed independently or in collaboration with others. She consulted with government agencies in that field and took part in scientific gatherings.

She was the co-editor of the *Natural Hazards Observer* during its first two years. In later fieldwork she was especially interested

in the complex relationships among water supply, household behavior, and health.

She was active in community planning in Chicago and Boulder, including the setting of managed urban growth policies for Boulder, the defeat of a plan to build underground nuclear war shelters for officials only, and the initial design of the Boulder County open space program. In recognition of her role in that effort, the County Commissioners named a hiking trail of striking beauty for her along Four-mile Canyon Creek a few months before her death.

Typical of her life is that after she heard a cancer probably would make her next year terminal she chose to spend parts of it in an International Geographical Union field trip in Australia, and in giving her grandchildren their first experience of camping in a wilderness area.

The Fund will serve the purposes Ann White held dear if it enables people, regardless of any formal training in geography, to engage in useful field studies and to have the joy of working along side their partners.

Copies of any of the items listed below are available by loan from the AAG office.

Curriculum Vita:

With Gilbert F. White and David J. Bradley. *Drawers of Water: Domestic Water Use in East Africa*. Chicago: University of Chicago Press, 1972.

"Toward a Global Summary of Natural Hazards." In M. Pecsied., *Man and Environment*, Studies in Geography, No. 11, Budapest: Geographical Research Institute, 1974.

"Water Supply and Income Distribution in Developing Countries." In J. Powelson and W. Loehr, eds., *Economic Development, Poverty and Income Distribution*. Boulder: Westview Press, 1977.

With Gilbert White. "Potable Water for All: The Egyptian Experience with Rural Water Supply," *Water International* 11, 1986, pp. 54-63.

With Samiha E. Katsha. "Woman, Water, and Sanitation: Household Behavioral Patterns in Two Egyptian Villages," *Water International* 14, 1989, pp. 103-111.

Eligibility. You are eligible to apply if you have been an AAG member for at least two years at the time you submit your application.

Criteria. The evaluation committee will select for support proposals that in its judgment best meet the purposes for which Anne and Gilbert White contributed the funds that endow the awards.

Applications and Deadlines. The application form is available at www.aag.org/Grantsawards/Annwhitfund.html (both applicants must complete background information forms). Your completed application must be received at the Meridian Place Office no later than **31 December 2003**. Please send **nine copies**. The Association will announce awards on or about 31 March 2004.

Reports and Acknowledgment. By accepting an Anne U. White grant you agree to submit to the AAG Executive Director a two-page report that summarizes your results and documents the expenses underwritten by the grant. You should submit your report no later than twelve months after receiving an award. Please acknowledge AAG support in presentations and publications of your research results.

Committee. Members of the Research Grants Committee are Donald G. Holtgrieve, Karen Morin, Thomas L. Mote, Beverley Mullings, Darrell Napton, Bimal Kanti Paul, and Susy Svatek Ziegler.

George and Viola Hoffman Award

Deadline: 31 October 2003

An award from the George and Viola Hoffman Fund may be made annually for student research toward a master's thesis or doctoral dissertation on a geographical subject in Eastern Europe. Eastern Europe

includes the countries of East Central and Southeast Europe from Poland south to Romania, Bulgaria, and the successor states of the former Yugoslavia. Topics may be historical or contemporary, systematic or regional, limited to a small area or comparative.

Applications for consideration for the 2004 award must be received by the chairman of the Award Committee no later than **31 October 2003**. Applications should be limited to 2,500 words and should include: (1) a statement of the problem to be pursued; (2) methods to be employed, including field study; (3) schedule for the work; (4) competence in the language of the area; and (5) a bibliography of pertinent literature. Each application should be accompanied by a letter stating the professional achievements and the goals of the individual and a letter of support from a sponsoring faculty member. The funds available for this year will be \$500. Awards will be announced at the AAG Annual Meeting.

Submit applications to the chair of the Hoffman Award Committee: Michelle Behr, Western New Mexico University, behrm@cs.wnmu.edu. Other members of the Hoffman Committee are: William Doolittle, University of Texas, dolitl@mail.utexas.edu; Robert J. Kaiser, ex officio, University of Wisconsin-Madison, rjkaise1@facstaff.wisc.edu; Olga Medvedkov, Wittenberg University, Ohio, omedvedkov@wittenberg.edu; Vera K. Pavlakovich, University of Arizona, vkp@email.arizona.edu; Gundar Rudzitis, University of Idaho, gundars@uidaho.edu; and George White, Frostburg State University, gwhite@frostburg.edu.

Glenda Laws Award

Deadline: 15 December 2003*

The Glenda Laws Award of the Association of American Geographers will be bestowed at the 2004 AAG Annual Meeting in Philadelphia. This award is administered by the Association of American Geographers and endorsed by members of the Institute of Australian

Geographers, the Canadian Association of Geographers, and the Institute of British Geographers. The annual award and honorarium recognize outstanding contributions to geographic research on social issues. This award is named in memory of Glenda Laws—a geographer who brought energy and enthusiasm to her work on issues of social justice and social policy. All scholars involved in geographic research on one or more social issues will be eligible for this award, with preference given to researchers who have received their Ph.D. within the last five years. Nominations should include two letters of recommendation from scholars or members of community organizations familiar with the research upon which the nomination is based, a curriculum vitae, and a scholarly paper based on original research. The award will be presented at the Awards Luncheon at the AAG Annual Meeting.

The deadline for nominations for the 2004 Glenda Laws Award is **15 December 2003**. Please forward nominations to committee chair: Maureen Hays-Mitchell, Colgate University, mhaysmitchell@mail.colgate.edu. Other committee members are Jennifer Hyndman, Simon Fraser University, Hyndman@sfu.ca; Stephen A. Matthews, Pennsylvania State University, matthews@pop.psu.edu; Doreen J. Mattingly, San Diego State University, mattingl@mail.sdsu.edu; Rachel Silvey, University of Colorado, silvey@spot.colorado.edu; Christopher J. Smith, SUNY-Albany, cjsmith@albany.edu; and Robert Wilton, McMaster University, wiltonr@mcmaster.ca. As with all AAG awards, the Award Committee may decline to make an award in any given year.

*Please note: deadline printed in the July/August 2003 issue was incorrect.

Honorary Geographer

Deadline: 1 October 2003

Every year the AAG designates an individual as that year's AAG Honorary

Geographer as a way of recognizing excellence in research, teaching, or writing on geographic topics by non-geographers. Nominations for the 2004 Honorary Geographer are now being solicited.

Nominations should include the complete name and address of the nominee and a concise (500 words maximum) yet specific description of the accomplishments that warrant the nominee's selection as an Honorary Geographer. Biographical and bibliographical information not included in the statement should not exceed three additional pages of text.

Nominations are due no later than **1 October 2003**. Digital submissions to ekhater@aag.org are preferred. Hardcopy nominations should be mailed to Association of American Geographers, attn: Honorary Geographer, 1710 Sixteenth Street NW, Washington, DC 20009-3198.

Meredith F. Burrill Award

Deadline: 31 October 2003

The Meredith F. Burrill Award was established to commemorate Meredith "Pete" Burrill's many and varied contributions to the profession of geography as an academic, senior government official, and officer of the Association of American Geographers (AAG). After serving as a professor of geography for 15 years, Burrill came to Washington, D.C. during World War II. He was soon appointed Executive Secretary of the United States Board on Geographic Names, and began a 32-year career that became global in scope. During those years, Burrill was a mainstay of the evolving AAG. He played a critical role in the transformation of the small, elite society into the open, dynamic organization it has become today, with a headquarters and full time staff in Washington. Burrill served as president of the AAG in 1965.

The purpose of the Burrill Award is to stimulate and reward talented individuals and groups whose accomplishments parallel the intellectual traditions Burrill pursued as a geographer,

Continued on page 12

2004 AAG Research Grants

The Association of American Geographers awards small grants to support research and fieldwork. Grants can be used only for direct expenses of research; salary and overhead costs are not allowed. The Research Grants Committee will not approve an award larger than \$1,000 for any single recipient. The committee will not approve awards for masters or doctoral dissertation research. No awards are made if funds are insufficient or if proposals are not suitable.

Eligibility: You are eligible to apply if you have been an AAG member for at least two years at the time you submit your application.

Criteria: The evaluation committee will support proposals that in its judgment offer the prospect of obtaining substantial subsequent support from private foundations or federal agencies and that address questions of major import to the discipline. No awards will be made in years when funds are insufficient or if proposals are not suitable.

Applications and Deadlines: Applications are available www.aag.org/Grantsawards/researchgrant.pdf. Nine completed applications must be received at the AAG office, 1710 Sixteenth Street NW, Washington, DC 20009, c/o Ms. Ehsan M. Khater, no later than **31 December 2003**. The

Association will announce awards on or about 31 March 2004.

Reports and Acknowledgment: By accepting an AAG Research Grant you agree to submit to the AAG Executive Director a brief (two-page) report that summarizes your results and documents the expenses underwritten by the grant. You should submit your report upon completion of your research. Please acknowledge AAG support in presentations and publications.

Committee: Members of the Research Grants Committee are Donald G. Holtgrieve, Karen Morin, Thomas L. Mote, Beverley Mullings, Darrell Napton, Bimal Kanti Paul, and Susy Svatek Ziegler. ■

Continued from page 11

especially those concerned with fundamental geographical concepts and their practical applications, especially in local, national, and international policy arenas. The funds that underwrite the award come from a bequest by Burrill, a gift from his wife Betty, and donations in his memory from colleagues and friends. The AAG hopes to make the first award, consisting of a certificate and cash honorarium, at the Association's Annual Meeting in Philadelphia.

The Burrill Award Committee solicits nominations of individuals and teams that have completed work of exceptional merit and quality that lies at or near the intersection of basic research in geography on the one hand, and practical applications or policy implications on the other. The committee shall give special consideration to research that addresses the basic role of geography in: 1) inter- and multi-disciplinary work on the interrelationships of significant cultural phenomena, 2) place

name standardization, especially with reference to maps, gazetteers, and other publications; and 3) promoting local, national, and international collaboration on such problems and topics. One award may be given annually; the committee may choose not to make an award in any given year at its discretion.

Nominations for the Burrill Award should be submitted to: Burrill Award Committee, Association of American Geographers, 1710 Sixteenth Street NW, Washington DC 20009-3198. Digital submissions are welcome and should be addressed to ekhater@aag.org. Please provide a curriculum vitae for the nominee as well as a nomination statement (two pages maximum) that describes the ways the nominee meets the award criteria. Up to three supporting letters from other individuals may also be submitted. Nominations and supporting materials are due at the AAG office no later than **31 October 2003**.

Anderson Medal

Deadline: 1 October 2003

The deadline for nominations for the 2004 James R. Anderson Medal of Honor in Applied Geography is **1 October 2003**. The Anderson Medal is the highest honor bestowed by the AAG Applied Geography Specialty Group. It is awarded annually by the group's board of directors in recognition of highly distinguished service to the profession of geography. It may be awarded to individuals or groups who have contributed notably to the advancement of the profession in one or more areas of industry, government, literature, education, research, service to the profession, or public service. The award is presented at the Awards Luncheon at the AAG Annual Meeting.

Guidelines for submitting nominations for the 2004 Medal may be obtained from the AAG Office. Submit nominations to Dr. John W. Frazier, Geography Department, SUNY-Binghamton, Binghamton, NY 13901-6000, frazier@binghamton.edu. ■

2004 AAG Dissertation Research Grants

The Robert D. Hodgson Memorial Ph.D. Dissertation Fund honors an accomplished geographer who capped his long career with ten years of distinguished service as the geographer in the U.S. Department of State. An internationally recognized expert on geographic aspects of the law of the sea and maritime boundaries, Dr. Hodgson believed that broader understanding of geographic principles would reduce international conflicts. The fund provides financial assistance to candidates preparing doctoral dissertations in geography.

The Paul Vouras Fund was established by a generous gift from Dr. Vouras, who taught at William Paterson College in Wayne, New Jersey, until 1990. The fund supports doctoral dissertation research in geography. Preference is given to minority student applications.

The Otis Paul Starkey Fund was established by Dr. Starkey to support doctoral dissertations or research papers devoted to regional study or significant problem areas in the United States or its possessions. Professor Starkey was

an officer of the American Society of Professional Geographers. He taught at the University of Indiana at Bloomington for many years.

Eligibility: You are eligible to apply if you have been an AAG member for at least one year at the time you submit your application, you do not have a doctorate at the time of the award, and you will have completed all Ph.D. requirements except the dissertation by the end of the semester or term following approval of your award. Your dissertation supervisor must certify your eligibility.

Criteria: Proposals should demonstrate high standards of scholarship. The Research Grants Committee will observe the purposes and preferences noted above when evaluating proposals. The Research Grants Committee represents a broad spectrum of geographical specialties, and cannot be expected to be familiar with the jargon of all geographical topics. Awards rarely exceed \$500. Awards may not be made in years when funds are insufficient or proposals are not suitable.

Applications and Deadlines: Applications are available at www.aag.org/Grants/awards/dissertation.pdf. Submit nine copies of your dissertation proposal of no more than 1,000 words and nine copies of the completed application no later than **31 December 2003** to Ms. Ehsan M. Khater at the AAG, 1710 Sixteenth Street NW, Washington, DC 20009. Your proposal should describe the problem you hope to solve, outline the methods and data you intend to use, and summarize the results you expect. Include budget items within the body of the proposal. The Association will announce awards on or about 31 March 2004.

Reports and Acknowledgment: By accepting an AAG Dissertation Grant you agree to submit to the AAG Executive Director a copy of your dissertation and a report that documents expenses charged to the grant. Please acknowledge AAG support in presentations and publications.

Committee: Members of the Research Grants Committee are Donald G. Holtgrieve, Karen Morin, Thomas L. Mote, Beverley Mullings, Darrell Napton, Bimal Kanti Paul, and Susy Svatek Ziegler. ■

Call for Nominations for Vice President and National Councillor

The AAG Nominating Committee for the 2004 election is seeking nominations for AAG Vice President (one to be elected) and for National Councillor (two vacancies). Those elected will take office on 1 July 2004. Members should submit the names and addresses of each nominee and their reasons for supporting the nomination to any member of the committee no later than **15 September 2003**; however, the Committee encourages nominations

well in advance of this deadline. As part of your nomination statement, please confirm that your nominee is willing to be considered by the nominating committee for the position for which you are nominating her or him.

Committee members are: Gregory W. Knapp, Department of Geography, University of Texas at Austin, Austin, TX 78712-1098, email: gwk@mail.utexas.edu; Lizbeth A. Pyle, Department of Geology and Geography, West

Virginia University, Morgantown, WV 26506-6300, email: lpyle@wvu.edu; and Dawn J. Wright, Department of Geosciences, Oregon State University, Corvallis, OR 97331-5506, email: dawn@dusk.geo.orst.edu.

Lists of past and current AAG officers may be found in the Handbook section of the current issue of the AAG's *Guide to Geography Programs in North America*. ■

WV Middle School Class Wins *PlacesOnLine* Best Website Award

Each year *PlacesOnLine* (www.placesonline.org), a special collection of place-based Websites sponsored by the AAG, presents up to two awards for excellent sites that are added to the collection. The 2002 Best Website Award in the student category was presented to middle school students in Howie Mitchell's 7th and 8th grade science classes in War, WV for their McDowell County Flood Atlas: www.hre.wvu.edu/tigers/emergencyresponse/mcdowell/index.htm

Information for this site was researched entirely by the students.

The Website evolved out a project in which the middle school students, in conjunction with TIGERS fellows from West Virginia University, documented the history, causes, and mitigation against local floods using an Internet-

based flood atlas. Highlights of the site include an interactive flood atlas linking digital orthophotos with pictures of flood damage, a 2 1/2 dimensional fly-through of War, student responses to the floods, a video of the flood, victim interviews conducted by students, and substantial information about local flood response and mitigation techniques. Michael P. Ferber of West Virginia University subsequently made this information ready for the Internet."

A sub-committee of the *PlacesOnLine* editorial staff judged entries. Normally, two awards would be presented, but the committee did not give a 2002 award in the non-student category because none of the entries met the criteria established for inclusion in the collection. Awards for Websites established (or significantly revised or updated) in 2003

will be presented at the awards luncheon at the Philadelphia AAG Annual Meeting in March 2004. Details for entering the 2003 competition will be announced later this year in the *AAG Newsletter* and on www.placesonline.org.

The Best Website awards are intended to encourage geographers and others to create high quality place-based Websites and link them to *PlacesOnLine*, thereby improving the geographic content of the Web. To examine the criteria for site inclusion in the collection, click the criteria for site selection link on the front page of the *PlacesOnLine* Website. For more information about the awards, and about *PlacesOnLine* in general, see page 8 of the April 2003 issue of the *AAG Newsletter* or contact one of the editors. ■

Visiting Geographical Scientist Program

The Visiting Geographical Scientist Program (VGSP) welcomes applications for the 2003-2004 academic year. Funded by Gamma Theta Upsilon (GTU), the International Geographical Honor Society, and managed by the AAG, the VGSP sponsors visits by prominent geographers to colleges and universities across the country. Its purpose is to stimulate interest in geography, especially in small departments that do not have the resources to bring in well-known speakers.

Participating institutions select and make arrangements with the visiting

geographer. The VGSP covers travel costs and provides a small honorarium; host institutions provide meals and housing.

The program is targeted for:

Students – to acquaint them with subfields that may not be available in course offerings at their institution, stimulate their interest in geographic research, and familiarize them with career opportunities available to geographers.

Faculty members – to encourage geographers in their own subfields of geography, to enrich their knowledge

of other subfields, to provide counsel on research and curriculum problems, and to inform non-geographers about current developments in the discipline.

Administrative officers – to acquaint them more fully with the nature, content and purpose of geography, assist them in understanding the unique spatial point of view that geography contributes to a liberal education, and provide counsel on the development of staff and curricula.

More information and applications are available from VGSP@aag.org. ■

**To make a pledge to the Advancing Geography Centennial Fund,
mail or fax the pledge form on page 7 to the AAG.**

Award Deadlines

SEPTEMBER

15. Helen and John S. Best Research Fellowships from the American Geographical Society Library, University of Wisconsin-Milwaukee Libraries. Contact the AGS Library at agsl@uwm.edu.

15. Climate SG Student Paper Competition. Contact Tony Vega at avega@clarion.edu.

20. GIS SG Honors Competition of Student Papers. See www.geog.ucsb.edu/~sara/html/research/gissg/.

29. Grosvenor Grant Program of the National Geographic Society Education Foundation. Contact grosvenorgrants@ngs.org.

30. CSG/GISSG/RSSG Student Illustrated Paper Competition. Contact Theresa Burcsu at tburcsu@indiana.edu.

30. Remote Sensing SG Student Paper Competition. Contact Theresa Burcsu at tburcsu@indiana.edu.

30. Daniel B. Luten and Earl Cook Awards from the Energy and Environment SG. Contact Mike Pasqualetti at Pasqualetti@asu.edu.

OCTOBER

1. Environmental Leadership Program Fellowships, www.elpnet.org/fellowship_application.html.

9. J. Warren Nystrom Award. Visit www.aag.org/Grantsawards/Nystromaward.html.

15. McColl Family Fellowship travel grants for research abroad. Contact AGS@amergeog.org or visit www.amergeog.org.

31. American Academy of Arts and Sciences National Visiting Scholars Program, 2004-2005 Post-Doctoral and Junior Faculty Fellowships, www.amacad.org.

31. AAG Meredith F. Burrill Award. Contact Sandra H. Shaw at wjsshaw@msn.com.

31. NEH Summer Stipends. Visit www.neh.gov/grants/guidelines/stipends.html.

NOVEMBER

10. 2004 International Dissertation Field Research Fellowship (IDRF) competition. Visit www.ssrc.org.

14. Cultural Geography SG Graduate Student Research Grant Competition. Contact Soren Larsen at sclarsen@gasou.edu.

DECEMBER

15. AAG Glenda Laws Award. Contact Maureen Hays-Mitchell at mhaysmitchell@mail.colgate.edu.

15. Transportation Geography SG student research paper award. Contact Benjamin Zhan at zhan@txstate.edu.

31. Applied Geography Citation Award. Contact Barry Wellar at wellarb@uottawa.ca

31. Ullman Award. Contact Benjamin Zhan at zhan@txstate.edu.

2004

JANUARY

1. China SG Student Paper Competition. Contact Susan Walcott at swalcott@gsu.edu.

1. Qualitative Research SG Student Competition. Contact Fernando Bosco at fbosco@mail.sdsu.edu.

23. Cultural Geography SG Student Paper Competition. Contact Soren Larsen at sclarsen@gasou.edu.

FEBRUARY

1. Environmental Perception and Behavioral Geography SG Student Paper Competition. Contact Jon Malinowski at MAL@usma.edu.

1. Water Resources SG Student Competitions. Contact Roxane Fridirici at rmf8dfa@inreach.com.

15. GORABS SG David E. Sopher New Scholar Award. Visit <http://gorabs.org>.

MARCH

15. Indigenous Peoples SG Graduate Student Paper Competition. Contact Kate Berry at kberry@unr.nevada.edu.

For detailed information about deadlines for AAG Grants and Awards, see pages 9-13. ■

Social Science Ph.D.s—Five Years Out Survey

Ph.D.s who earned their degrees in 1996, 1997, or 1998 in anthropology, business, communication, geography, history, political science, or psychology may soon be asked to participate in a national survey focused on job search, work/life choices and dilemmas, and doctoral program evaluation. The **Social Science Ph.D.s—Five Years Out** survey is

funded by the Ford Foundation. Five to seven years out is an ideal time to reflect on one's career choices and doctoral education because Ph.D.s have had opportunities to see how well their education has prepared them for their careers. AAG staff member Patricia Solis has been supporting the project, and ensuring that geography is represented. If you receive an invitation (January 2004) please complete the survey. The

information gathered from this survey will guide doctoral program re-assessment efforts across the country. The survey is administered by the Center for Innovation and Research in Graduate Education (CIRGE), located at the University of Washington. For more information about the survey, visit CIRGE's web site www.cirge.washington.edu. ■

Call for Papers

National Institute of Justice's Mapping & Analysis for Public Safety (MAPS)

The program is pleased to announce its annual call for papers. This year's theme, "Crime Mapping and Public Safety: Identify the Direction, Explore the Connection, Engage the Future," is designed to expand the realm of crime mapping to include public safety mapping. As part of our continuing effort to stay abreast of recent innovations in these fields, the MAPS program solicits presentations, professional development workshops, student papers, and showcase sessions to be delivered at its annual conference. Please visit our web site (www.ojp.usdoj.gov/nij/maps) for more information about the conference, general guidelines, and to download forms for proposal submissions. If you have any questions, please contact the Institute for

Law and Justice at 703-684-5300 or nijpcs@ilj.org.

Peace, Conflict, and the Environment

Environmental conflicts take place in various resource and regional contexts (e.g., blood diamonds in Angola, oil in Iraq), yet environmental resources have also motivated peaceful collaboration at various scales (e.g., regional common pool resource issues, international environmental treaties). We seek to organize sessions for the 2004 AAG meeting in Philadelphia that address why conflict emerges in some environmental resource contexts and at some scales while peaceful negotiation in other cases deters dissent and conflict. We are also interested in how resource-based conflicts are brought to a conclusion. Faculty and graduate students are welcome. If you are interested in participating in these sessions, please send a

title and brief (150-200 word) abstract to Marilyn Silberfein (Temple University) at pawling@astro.temple.edu or Shannon O'Leary (University of Illinois) at solear@uiuc.edu. Please note, sending an abstract to either organizer will not automatically register you for the meeting or for the session.

Southern Regional Science Association

The 43rd annual meeting of the Southern Regional Science Association will be held at the LePavillon Hotel, in New Orleans, Louisiana, 11-13 March 2004. Papers from all areas of regional science are welcome. If you have an idea for a session or panel, please contact Mark Partridge, 2004 Program Chair, St. Cloud State University, at mpartridge@stcloudstate.edu. For additional information, visit the SRSA web site at www.srsa.org. The deadline for abstracts for papers is **15 December 2003**. ■

Geographic Centers

The Department of Geography at Oklahoma State University recently unveiled their "Geography Departments of North America ArcIMS" website, www.ocgi.okstate.edu/geogdept.htm. The site incorporates information published in the *AAG Guide to Programs in North America*, and includes school specialities, location, and number of faculty. The points that represent each school were plotted as closely as possible and are classified by the highest degree offered in that specific department.

The interactive map included a highway network of the United States, small and large urban areas, counties, and state boundaries. As the user zooms in, various layers are available. The viewer can use the hyperlink tool to connect to any school's departmental web page. For more

information, contact Dr. Allen Finchum at finchum@okstate.edu.

After nine years of consolidation with the political science and sociology, the Department of Geography at the University of Central Arkansas is once again independent. The department has six faculty members, and provides BA and BS degrees, a minor in geographic information science, and a graduate certificate in GIS.

The University of Montana's Department of Geography and Central Asia and Caspian Basin Program received a \$73,000 grant from the U.S. Department of Education Fulbright-Hays Group Projects Abroad Program to send Montana teachers to Kyrgyzstan, Central Asia. The project is entitled "Teaching about

Central Asia: Mountains and Society in Kyrgyzstan," and entailed sending a group of sixteen Montana students and teachers on a curriculum development and study abroad expedition, 15 July to 10 August 2003. The expedition was hosted by Naryn State University in Kyrgyzstan.

Upon their return, the participants have begun focusing on developing instructional materials and updating classroom presentations. They will also participate in a Central Asia Resource Network that will disseminate information and coordinate statewide presentations and consultancies. The project will benefit not only the participants, but also their families and communities, and enhance understanding of the cultural and physical geography of the region. ■

**Celebrate the AAG's 100th Anniversary at the 2004 AAG Centennial Meeting.
14-19 March • Philadelphia, PA**

The Social Science Research Council, in partnership with the American Council of Learned Societies, recently announced the selection of 50 fellows from a pool of 824 applicants in the 2003 International Dissertation Field Research Fellowship (IDRF) competition.

The newest IDRF fellows conducting dissertation research in the discipline of geography are: **Sandra Baptista** (Rutgers), "Forest Turnaround, Suburban Sprawl, and Environmental Injustice in Southern Brazil"; **Joseph Bryan** (UC Berkeley), "Map or Be Mapped: Resource Politics and Indigenous Land Claims in Eastern Nicaragua"; **Neera Singh** (Michigan State), "Democratizing Forest Governance: Emergent Community Forestry Federation in Orissa, India"; and **Leo Zulu** (University of Illinois-Urbana Champaign), "Re-Scaling Conservation: The Political Ecology of Community-Based Forest Management in Southern Malawi."

Kyle Evered, Illinois State University, was selected to receive a \$10,000 Teaching Fellowship through the Social Science Research Council's (SSRC) Eurasia Program. The SSRC fellowship will support Evered's development of a general education course "Geographies of Central Asia and the Caucasus" and related instructional materials. The course and its development complement Evered's ongoing research on the place of the Turkic region amid processes of globalization.

Eve Gruntfest and **Charles Benight**, University of Colorado, were awarded a National Science Foundation grant of \$422,951 for "Toward Improved Understanding of Warnings for Short-Fuse Weather Events."

Brad Hammerschmidt, an undergraduate in geography at Kansas State University, received a Homeland Security Scholarship. Of nearly 2500 applicants, 100 were funded. A minority came from the social sciences. The scholarship stipend is \$1000/month for nine months plus full tuition and fees, renewable for a second year. The scholarship also includes a summer internship at a Department of Homeland Security facility (the stipend increases during the internship to \$500/week).

Cindi Katz, City University of New York, has been selected as a 2003-2004 Radcliffe Fellow. She will examine modern notions of childhood and the historical geographies with which they are linked. Drawing on a range of research methods, she plans to study the shifting ecologies of U.S. childhood by focusing on contemporary ideals and proscriptions concerning childhood, the geographies of children's everyday lives, and the practices that make these sensible to children, their caretakers, and the public more broadly.

University of Arizona Geographers **John Kupfer** and **Katie Hirschboeck** received the University of Arizona's prestigious Provost's General Education Teaching Award. Dr. Hirschboeck's course "Introduction to Global Change" was noted as a model for teaching intellectual inquiry and critical thinking, writing to learn, and promoting cross-disciplinary application. Katie was recognized as a pioneer and leader on campus in transforming teaching methods and using new technologies. Dr. Kupfer was honored for conveying his passion for geography and the environment to his students through his animated style, use of technologies and preceptors, and respect for his students. John was also recognized for his commitment to general education instruction and for always thinking about new ways to capture students' attention in his course "Earth's Environments: Introduction to Physical Geography."

University of Arizona geographer **Derrick Lampkin** was one of 55 graduate students across the country selected for a prestigious NASA Earth System Science Graduate Student Fellowship. These fellowships run three years (renewable annually), including stipend, plus allowances for tuition and other expenses. Derrick's Ph.D. proposal is titled "Mapping Alpine Snowmelt Over the Colorado River Basin Using Multiple Satellite Platforms: MODIS and AVHRR Data for Monitoring Variability in Regional Climate and Water Resources."

Dorn McGrath was inducted in the American Institute of Certified Planners (AICP) College of Fellows. McGrath was

welcomed as a Fellow of AICP on the basis of individual achievement in the field of urban and rural planning at a ceremony held in conjunction with the American Planning Association's (APA) National Planning Conference in Denver held 29 March 2003.

Soe W. Myint, University of Oklahoma, **Xiaojun Yang**, Florida State University, and **Qing Shen**, University of Maryland, College Park, won a \$80,000 grant from the Institute for Advanced Education in Geospatial Sciences at the University of Mississippi, through a national open competition. This grant is part of NASA funding to develop web-based educational curriculum in geospatial sciences. It will be used to develop a dynamic distance-learning course highlighting the application of remote sensing and GIS technologies for the management and planning of community growth. This course is targeted to support NASA Earth System Science National Applications.

Bimal Kanti Paul received a research grant from the Center for Asian Studies at the University of Texas, Austin. Through this grant he will spend a week in Austin as a Visiting Scholar at the Center to conduct library research on a project entitled "Operation Push Back: A Geo-political Study of Alleged Illegal Bangladeshi Immigrants to India." Also of note, Paul and his Ph.D. advisee **Vicki Tinnon Brock** received a Quick Response Grant from the Natural Hazards Research and Applications Information Center (NHRAIC), University of Colorado, Boulder to study public response to the 4 May 2003 tornado warnings in Kansas, Missouri, and Tennessee.

Cherie Northon, University of Alaska Anchorage, was appointed as an affiliate director for the Alaska Space Grant Program (ASGP) in June 2003. The ASGP is funded by NASA and carries a substantial annual stipend for student research. Additionally, ASGP funding provided her and **Thomas J. Eley** with \$27,000 for the enhancement of geospatial data targeted for workforce development in Alaska. In fall 2002, they were also awarded a \$28,000 grant by the Department of

Continued on page 18

Continued from page 17

Energy to investigate, catalog, and map radioactive pollution sources in the circumpolar areas of Alaska. This is the second phase of a project Northon and Eley were involved in for the Emergency Prevention, Preparedness, and Response working group (EPPR) of the International Arctic Council. The previous project inventoried mammals, birds, fish, and humans that were at risk from potential oil spills in the Arctic.

Dawn Wright, Oregon State University, was awarded \$371,984 by the NOAA National Environmental Satellite, Data, and Information Service (NESDIS) to lead various research and outreach projects involving the integration of GIS and remote sensing for coastal and ocean resource management. Activities will be conducted under the purview of the new NOAA Cooperative Institute for Oceanographic Satellite Studies at Oregon State.

As part of its Earth Science REASoN (Research, Education and Applications Solutions Network) project, NASA solicited projects that would provide practical solutions to utilize NASA assets and resources to assist in the development of scientific tools to predict the Earth's future, policy management tools and educational programs. NASA recently awarded funding to forty-one projects, seven of which were proposed by geographers. **John R. Jensen**, **Susan L. Cutter**, **Michael Hodgson**, and **David Cowen** were awarded a grant for the "Development of Remote Sensing-Assisted Natural and Technological Hazards Decision Support Systems."

Other AAG members who received awards are **David Lewis Skole** for "A Global Tropical Forest Information Center-TRFIC-2," and **Douglas A. Stow** for "A Border Security Decision Support System Driven by Remotely Sensed Data Inputs." ■

Grants and Competitions

The American Academy of Arts and Sciences invites applications for the **Visiting Scholars Program, 2004-2005** (Post-Doctoral and Junior Faculty Fellowships) for research projects related to its major program areas: Humanities and Culture, Social Policy and American Institutions, Education, and Science and Global Security (see program descriptions at www.amacad.org). The American Academy will soon mark its 225th anniversary, it would also welcome proposals on topics that examine the impact of scientific and technological advances in the past two centuries on, for example, American institutions, social movements, and cultural change, humanities and culture in America, and American foreign policy and global security.

Visiting Scholars will participate in conferences, seminars, and events at the Academy while advancing their independent research. Post-doctoral scholars are eligible for a \$35,000 stipends and junior faculty are eligible for awards of up to \$50,000.

For details, contact the Visiting Scholars Program, American Academy of Arts and Sciences, 136 Irving Street, Cambridge, Massachusetts 02138-1996, call (617) 576-5014, or email vsc@amacad.org. Application information is available on the Academy's website at www.amacad.org. Applications are due **31 October 2003** (postmarked).

The **Environmental Leadership Program** invites applicants for their national fellowship program. This program is designed to build the leadership capacity of the environmental field's most promising emerging professionals, and is designed to provide training, project support, and a peer network to approximately 20 talented and diverse individuals each year from all sectors of the environmental field, including the nonprofit, business, government, and higher education sectors.

These two-year fellowships offer networking opportunities, intensive leadership

and skills training, project seed money, support, and time for personal and professional reflection. Fellows join a community of diverse emerging leaders, and have the opportunity to meet established environmental practitioners and experts in the field. Fellows receive travel and accommodations for fellowship retreats; access to funding for leadership-building projects; and national recognition through the program. For more information visit www.elpnet.org/fellowship_application.html. The application deadline is **1 October 2003**.

The **Fulbright Senior Specialists Program** awards grants ranging from two to six weeks that provide U.S. faculty and professionals with opportunities to collaborate with professional counterparts on curriculum and faculty development, institutional planning, and a variety of other activities. For example, grantees may:

- conduct needs assessments, surveys, institutional, or programmatic research;
- take part in specialized academic programs and conferences in conjunction with other scheduled activities;
- consult with administrators and instructors of post-secondary institutions on faculty development;
- present lectures at graduate and undergraduate levels;
- participate in or lead seminars or workshops at overseas academic institutions;
- develop and/or assess academic curricula or educational materials;
- conduct teacher-training programs at the tertiary level;

Note: Research is not funded via the Fulbright Senior Specialists Program.

Grants awarded will include travel and per diem plus a \$200 per day honorarium. Per diem costs, which are in-country costs for lodging, meals, and in-country transportation, will be covered by the host institution. The next rolling deadline is

Grants and Competitions cont.

29 September 2003. Visit www.cies.org/specialists/ for more information and online application.

The **International Dissertation Field Research Fellowship (IDRF)** program provides support for social scientists and humanists conducting dissertation field research in all areas and regions of the world. Up to fifty fellowships will be awarded in the year 2004. The program is administered by the Social Science Research Council in partnership with the American Council of Learned Societies. Funds are provided by the Andrew W. Mellon Foundation.

The IDRF awards enable doctoral candidates of proven achievement and outstanding potential to use their knowledge of distinctive cultures, societies, languages, economies, politics, and histories, in combination with their disciplinary training, to address issues that transcend their disciplines or area specializations. The program supports scholarship that treats place and setting in relation to broader phenomena as well as in particu-

lar historical and cultural contexts.

Standard fellowships will provide support for nine to twelve months in the field, plus travel expenses. They will rarely exceed \$20,000. In some cases, the candidate may propose fewer than nine months of overseas fieldwork, but no award will be given for fewer than six months. The fellowship must be held for a single continuous period within the eighteen months between July 2004 and December 2005. For more information on the IDRF program and its fellows, please visit www.ssrc.org. The receipt deadline for the 2004 IDRF competition is **10 November 2003**.

The **National Endowment for the Humanities (NEH) Summer Stipend** program supports two months of full-time research on a project in the humanities. The award is \$5000 and this nationwide competition has a **1 October 2003** deadline. Regular faculty members of colleges and universities must be nominated by their institutions (each institution may nominate a maximum of two applicants); however, independent

scholars and adjunct or part-time faculty may apply for these grants without nomination. Details about the program may be found at www.neh.gov/grants/guidelines/stipends.html. Questions about the program can be sent via email to stipends@neh.gov or via phone, 202-606-8200.

The **New York State Archives** and the **Archives Partnership Trust** are offering grants through the **Larry J. Hackman Research Residency Program**. Residency grants support advanced work in New York State history, government, or public policy, and must draw, at least in part, on the holdings of the New York State Archives. Previous residents have included academic and public historians, graduate students, independent researchers and writers, and primary and secondary school teachers. Deadline: **31 January 2004**. Contact Archives Partnership Trust, Cultural Education Center, Suite 9C49, Albany, NY 12230. Voice 518-473-7091 or email www.aptrust@mail.nysed.gov, or visit www.nysarchives.org. ■

New Appointments

California State University, Northridge, Assistant Professor, Shawna J. Dark, Ph.D., 2003, UCLA.

California State University, Northridge, Assistant Professor, Steven M. Graves, Ph.D., 1999, University of Illinois Urbana-Champaign.

Eastern Kentucky University, Assistant Professor, Donald Yow, Ph.D., 2003, University of South Carolina.

Kansas State University, Visiting Assistant Professor, Toni A. Alexander, ABD, Louisiana State University.

University at Buffalo-SUNY, Assistant Professor, Sean J. Bennett, Ph.D., 1993, Binghamton University-SUNY.

University of Southern Mississippi, Assistant Professor, Jerry (Joby) Bass, Ph.D., 2003, University of Texas.

University of Southern Mississippi, Chief Scientist, Gulf Coast Geospatial Center, Greg Carter, Ph.D., 1985, University of Wyoming.

University of Southern Mississippi, Assistant Professor, David Cochran, ABD, University of Kansas.

University of Southern Mississippi, Instructor, Jerry Coleman, M.S., 1992, University of Southern Mississippi.

University of Southern Mississippi, Assistant Professor, Jerry Griffith, Ph.D., 2000, University of Kansas.

University of Southern Mississippi, Assistant Professor, George Raber, ABD, University of South Carolina.

University of Southern Mississippi, Assistant Professor, Carl (Andy) Reese, Ph.D., 2003, Louisiana State University.

University of Southern Mississippi, Geographic Technology Coordinator, George Roedl, M.S., 2001, University of Southern Mississippi. ■

Key: New Institution, position, name, degree, year degree granted, granting institution.



AAG Member Profile: Rosann Poltrone

Rosann Poltrone resides in Littleton, Colorado where she serves as Instructor of Geography and Chair of the Social Sciences Department (anthropology, geography, history, and political science) at Arapahoe Community College (ACC). Prior to her ten-year academic career, Rosann worked with several consulting companies in the Denver area as an environmental scientist responsible for environmental assess-

ments, regulatory compliance, permitting, and hazardous waste site investigations. She holds a B.A. in physical geography from the State University of New York at Buffalo and a M.A. in geography from the University of Wyoming.



Poltrone

AAG: How many students do you have in your geography courses at the community college?

Rosann: I typically have 20 to 25 students, although more, 90 to 100, in the world regional geography class. That's what people want when they come here to the community college—the basic transfer classes, and if I'm lucky, I'll get people interested in geography and expand their horizons.

AAG: And maybe major in geography?

Rosann: And maybe major in geography. We've had a couple.

AAG: Are most of them undecided?

Rosann: A lot of our students are in education and want to teach K-12, so it's an opportunity to introduce future teachers to geography. Rarely do students come in and say, "I want to be a geography major." That's my job to tell them it's wonderful.

AAG: What other courses have you taught?

Rosann: Other than world regional geography, there is physical geography and intro to environmental science, or human

ecology. I previously taught physical geology, environmental geology, site assessment, environmental sampling, and air, water, and land issues.

AAG: I imagine your previous professional experience is useful in the classroom, too?

Rosann: Yes, certainly. It's an advantage. I can come in and talk about how I did it there in my classes. You see, I still consider myself to be an environmental scientist. And I worked as a consultant for almost eight years. I was laid off and decided to try teaching. I started with one course, then they took my position full time, and that's how I ended up as the geography department.

AAG: The geography department?

Rosann: I am the department. The one and only!

AAG: What are the advantages and disadvantages of that?

Rosann: Well, you do it all! I hire and train adjunct instructors, schedule classes, manage the budget, serve on the curriculum committee, and do department chair duties for 4 departments. On top of teaching 5-6 classes per semester, you also have to learn new things and find funding for projects. For example, when I hear people say, "Hey I do all that GIS" and I say "Where were you when I needed you?" But here it's the kind of thing, I'm going to have to do it.

AAG: So do you work with other geographers?

Rosann: Not as much as I'd like to! I'm pretty much kind of out here by myself, a lonely geographer. I'm going to the applied geography conference in Colorado Springs and to the early career faculty development workshop in Boulder. And, we do have the metro area universities and four year schools to feed students into and link up with.

AAG: And the AAG Community College Affinity Group?

Rosann: Yes, that too.

AAG: How long have you been a member?

Rosann: I've been a member off and on since I was an undergrad, about twenty years.

AAG: How is it helpful to you?

Rosann: I read the journals and newsletters and see my friends and have gone to the meetings. Not too often. What I've found is that there is nobody to teach for me if I go, since I am the only one here.

AAG: Do you plan to return to consulting or stay at the community college?

Rosann: I'm very happy teaching as long as they want me here. Recently, my position was cut from full time down 25% and they cut my salary 40%. Now I'm doing my extra load at the part time rate. I have kept benefits, but it's sad because there's not very many people out there qualified to teach. We require a master's here and don't pay very much and then the hours are strange, nighttime, you know. I sometimes do "free-lance" consulting, but I find teaching to be the most rewarding thing I have done in my career.

AAG: What are the rewards?

Rosann: There are many students out there who flounder in huge university classes. I feel that the smaller classes of a community college give them an opportunity to get their feet wet, and learn "I can do it." Here they have the extra time and they can recognize they can do it. . . . We have many special programs here where they get help. . . . It's a lot of fun watching the students who were once discouraged excel and graduate. I have a few of their graduation pictures on my wall with their business cards from their new careers, and it's just delightful! That's why I like teaching, something new every day. And, you are helping people succeed. ■

Editor's Note: Suggestions for members to profile are welcome. Please send names and contact information to psolis@aag.org.

Terence Burke, longtime professor and administrator at the University of Massachusetts, and associate to the president at the University of Arizona from 1982 until 1998, died 17 June 2003 at the age of 72. He is survived by his wife of 19 years, Philanne "Topsy" Burke, four children, and five grandchildren.

Born in Leicestershire, England, Burke received Smith-Mundt and Fulbright Awards to study historical geography at Clark University in Massachusetts. After earning his doctorate from the University of Birmingham, England, he served as a Flight Lieutenant with the Royal Air Force for four years before coming back to the United States to begin teaching as an assistant professor at the University of Massachusetts, Amherst. During his 20-year tenure at Amherst, he received many awards including the Distinguished Teacher Award, and was widely published. He eventually moved on to become associate to Henry Koffler, the Chancellor of the University of

Massachusetts system, and in 1982, followed Dr. Koffler to the University of Arizona to act as associate to the president. He retired from this position in 1998.

A memorial service was held 23 June at the First United Methodist Church of Tucson, Arizona. Donations may be made in Dr. Burke's honor to the American Red Cross or the Community Food Bank of Tucson.

Dr. Orland Maxfield, emeritus professor of geography, University of Arkansas, died 14 May 2003. In 1945, he graduated from George Peabody College for Teachers, and he later earned M.A. and Ph.D. degrees at the Ohio State University. He joined the faculty at the University of Arkansas in 1946 and retired in 1990. He established the geography department in 1948 and chaired the department for many years. He helped establish many interdisciplinary programs and chaired the Western

Civilization unit for many years. His professional interests were varied but he was devoted to the conservation of natural resources. In the early 1970s, he chaired Governor Dale Bumpers' Committee on Land Use Policy for Arkansas.

Orland belonged to many professional organizations. He was devoted to Gamma Theta Upsilon (GTU), and he was a 50-year plus member of the Association of American Geographers (AAG) and the National Council for Geographic Education (NCGE). In 2002, he received the Distinguished Mentor Award from NCGE. He served as the International Executive Secretary of GTU from 1972 to 1992, President from 1993-94, and Historian and Archivist to the present.

Memorials may be made to Gamma Theta Upsilon (the Educational Fund) by contacting Dr. Virgil Holder, Executive Secretary, Gamma Theta Upsilon, Department of Geography, University of WI-La Crosse, La Crosse, WI 54601. ■

Become a Certified Conservation Educator

Learn about conservation education and gain a national credential. This program is designed for teachers, environmental professionals, and interested individuals who want to obtain conservation education information and professional development. The National Conservation Educator Center administers the credential in a unique home study certification format. Candidates can work toward the conservation certification at their own pace and have up to three months to complete the training manual. For a program brochure send your full mailing address to: Susan Peterson, National Director, at susanp60@excite.com. ■

Members of Note

Sean Gorman, a graduate student at George Mason University, made the front page of the 8 July 2003 edition of the *Washington Post*, for his dissertation research in which he mapped every business and industrial section in the United States, including the fiber-optic network that connects these sectors. The *Post* ran the story after Gorman's research caught the attention of government officials who worried that his research, gathered from unclassified materials, posed a security risk.

South Dakota State University renamed its Awards for Teaching Excellence after geographer **Edward Hogan**. The award is now known as the Edward Patrick Hogan Award for Excellence in Teaching and has been endowed with \$50,000 by the Larson Foundation in honor of Dr. Hogan, who served on the faculty of SDSU from 1967 until his retirement in July 2003. Dr. Hogan is

known for his excellence in teaching and advising, and his ability to work with students.

Allen J. Scott, professor and Director of the Center for Globalization and Policy Research at UCLA, was awarded the Vautrin Lud Prize at the Festival International de Géographie (FIG) de Saint-Dié-des-Vosges. This prize, considered the "Nobel" of Geography, is given annually by a five member international jury. Past winners include Bruno Messerli, Doreen Massey, David Harvey, Peter Gould, Torsten Hagerstrand, Gilbert F. White, and Peter Haggett.

James L. Wescoat Jr. of the University of Illinois at Urbana-Champaign was named a Phi Beta Kappa Visiting Scholar for 2003-2004, and appointed to the National Research Council Water Science and Technology Board for a three-year term. ■

AAG welcomes these new members whose memberships were processed during the last month.

Justine Allpress, Durham, NC	Mary DeLaTorre, Valencia, CA	Jason Greenberg, Louisville, KY
Denbeigh Armstrong, Hobart, Tasmania, Australia	Paul Desanker, University Park, PA	Scott C. Haley, Sacramento, CA
Anna Austin, Newington, GA	Tolia Kelly Divya, Harrow, MI	Douglas James Hallett, Flagstaff, AZ
Yasser M. Ayad, Clarion, PA	Timothy Dolney, Kent, OH	John Harner, Colorado Springs, CO
Jonathan Baker, Cincinnati, OH	Mathew Dooley, Lincoln, NE	Stephen Hays, Chula Vista, CA
Adrienne Barlow, Shawnee Mission, KS	Stacie Duberstein, Akron, OH,	Colbert Held, Waco, TX
Paul Barnes, Gulfport, MS	Brean Duncan, Merritt Island, FL	Anne Hensler, Houston, TX
Stefan Becker, Bad Endbach, Germany	Mike Duncan, Berkeley, CA	Michael Hermann, Orono, ME
Michael Belligan, Saint Johns, MI	Dianne Dunn, Whiteman AFB, MO	Konstanze Höchtberger, Galway, Ireland
Jeffery A. Bernard, Madison, WI	John Eckman, Harrisonburg, VA	Nathan L. Hopper, Picayune, MS
Mark S. Binkley, Mississippi State, MS	Steven Erickson, Portland, OR	Ralph Hoversten II, Grand Forks, ND
Matthew Brawner, Raleigh, NC	Scott Farnham, Mansfield, MA	Andrew Howard, Middlebury, VT
Ken Brelsford, Shawnee, KS	Ella Faulkner, Alexandria, VA	Yong Huang, Carbondale, IL
William H. Brenton, Jr., Windsor, CO	Miriam Fearn, Mobile, AL	Regan Huff, Birmingham, AL
Kristen Brumbaugh, Houston, TX	James Fields, Columbus, OH	Alva Joi Jaranilla, St. Cloud, MN
Jeff Brunskill, Amherst, NY	Douglas Fischer, Santa Barbara, CA	Doreen Jeffrey, Long Beach, CA
Joseph H. Bryan, Oakland, CA	Lara Fisher, Oakland, CA	Matt Johnson, Huntington Beach, CA
Emily Burkhardt, Rockville, MD	Robert Fitzgerald, Flossmoor, IL	Melvin Arthur Johnson, Crete, NE
Samantha Canterberry, La Mesa, CA	Charile Fitzpatrick, Redlands, CA	Brenda Kammin, Urbana, IL
Padraig Carmody, Dublin, Ireland	Andrew Ford, Salt Lake City, UT	Penelope G. Karagounis, Charlotte, NC
Daron Carrelro, Washington, DC	Maryellen Foresta, Kenosha, WI	Michael D. Kastanotis, Lynn, MA
Marcia Castro, Princeton, NJ	Mark Friedl, Boston, MA	Amanda Keen-Zebert, San Marcos, TX
Matthew Charton, Morrilton, AR	Heather Frost, Vancouver, BC, Canada	Nanjoo Kim, Seattle, WA
Jennifer Cloherty, MA	Mary Gainer, Poquoson, VA	Brian King, Highlands Ranch, CO
Amy Cooke, Chapel Hill, NC	David Gaylard, London, UK	Matt Krantz, Bowling Green, KY
Cheryl Cottine, Lewisburg, PA	Wayne Gearey, Vancouver, BC, Canada	Eric Kriener, Omaha, NE
S. James Cousins, Bethesda, MD	Paul Gerard, Alexandria, VA	Robert J. Kruse, II, Kent, OH
Jose Rodaniel Cruz, Rockville, MD	Paolo Giaccaria, Torino, Italy	Anne T. Kuriakose, Madison, WI
Tom De Angelis, La Mesa, CA	Valerie Gill, Reston, VA	Jennifer La Cava, Las Cruces, NM
Juan Deguara, Reston, VA	Phil Graff, Carbondale, IL	David Lamb, Fort Collins, CO
	Anne Green, Kenilworth, Warwicks, UK	

New Members

Sarah Landon, Tucson, AZ
David Lansing, Cheyenne, WY
Jennifer Larson, Turlock, CA
Richard Lasko II, Pine City, NY
Timothy R. Lawrence, Atlanta, GA
Yanfen Le, Athens, GA
Timothy LeDoux, Arlington, VA
Chienping Lee, Taichung, Taiwan
Landon Lee, Rowland Heights, CA
Zhanfeng Liu, Sacramento, CA
Colin Curtis Lund, Toronto, ON, Canada
David Lusch, East Lansing, MI
Tomasz Majek, Vancouver, BC, Canada
Manuwoto Manuwoto, Bogor, Indonesia
Jody Smothers Marcello, Sitka, AK
Jessica L. McCann, Washington, DC
Jessica McCarty, Hyattsville, MD
Cassandra McClellan, Bellingham, WA
Marshall McGee, Columbia, SC
Cam McKinnon, Everett, WA
Robert McLeman, Cambridge, ON, Canada
André Ménard, Montréal, PQ, Canada
Doug Mende, Redlands, CA
Michelle Mersereau, Somerville, MA
Marina Rose Mickiewicz, Dunedin, FL
Jennifer Misner, Sewell, NJ
Benita Moore, Citrus Heights, CA
Melissa Moore, Syracuse, NY
Katrina Moser, Salt Lake City, UT
Dorothee Moss, Rocklin, CA
Fatima Mueller-Friedman, St. Louis, MO
James Myers, Pennington, NJ
Gina Nicholas, MN
Robert Ott, Belmont Shore, CA
S. Ottersen, Portland, OR
Avrelío M. Pamintuan, Bellflower, CA
Siddharth Pandit, Albany, NY
Krishna Pathipaka, NM
Darci Paull, Manhattan, KS
Jamie Peck, Madison, WI
Matthew Perigny, Corvallis, OR
Kieran Philips, Riverside, CA
Lisa Phillips, Fishers, IN
Michelle Phillips, Las Cruces, NM
Mario Picazo, Madrid, Spain
Jason Pittman, Placerville, CA
Gopinath Raju, Muncie, IN
Juan P. Ramirez, Lincoln, NE
Christian Raumann, Menlo Park, CA
Aubrey Jo Reisetter, Brooklyn Park, MN
Eric Reusch, Austin, TX
Jenny Rhae, Billings, MT
Dallas D. Rhodes, Statesboro, GA
Xuejin Ruan, Minneapolis, MN
Bronwyn Sawyer, Canada
Tiffany Seeling, Metairie, LA
Mariah Seymour, OR
Xu Shaowei, Waterloo, ON, Canada
Shaw-Wen Sheen, Tainan, Taiwan
Hu Shixiong, Amherst, NY
David Simeral, Reno, NV
Kari Simmelink, Isle of Wight, VA
Stacey Simmons, Metairie, LA
Eugene Slechta, Fountain Hills, AZ
Cassie Soeffina, Sioux Falls, SD
Kerstin Stanford, Flagstaff, AZ
Nancy Stein, Manhattan, KS
Jeffrey C. Strasser, Rock Island, IL
Yesim Sungu, Boston, MA
Robert Edward Thomas, Carmichael, CA
William H. Thomas, Branchville, NJ
Rod Thornton, Oakland, CA
Thomas Toland, Sterling Heights, MI
Jennifer Torres, Alexandria, VA
Andy Tullus, Danville, CA
Leela Viswanathan, Toronto, ON, Canada
Karen Vitulano, Daly City, CA
Nicole Ward, Davis, CA
Cheryl Warren, Hillsborough, NC
Chris Wayne, Seattle, WA
Phillip Weir, Los Angeles, CA
Sarah Weiss, Omaha, NE
Yuming Wen, Kingston, RI
Jörg Wendel, Basel, Switzerland
Nyssa Whitford, Boone, NC
Georgina Wight, Knoxville, TN
Felicia R. D. Wilcox, Boston, MA
George Wildeman, Painted Post, NY
Laurie L. Williams, Fresno, CA
Merrilee Willoughby, San Diego, CA
Jonathan Witcoski, Conyngham, PA
Kathleen Marie Wolfe, Statesville, NC
Zhixiao Xie, Boca Raton, FL
Li Yin, Boulder, CO
Qian Yu, Berkeley, CA
Jake Zelman, Baltimore, MD
Haifeng Zhang, Columbia, SC ■

Applied Geography SG

The Citation Award was created by the Applied Geography Specialty Group to recognize outstanding achievements in the application of geographic theories, concepts, and research methodology to the solution of real-world problems of governments, corporations, and other organizations.

For the 2003 Citation Award guidelines, contact AGSG Chair Barry Wellar at wellarb@uottawa.ca. The deadline for submissions is **31 December 2003**.

China SG

The China Specialty Group sponsors an annual award to recognize distinguished student research and paper presentation in a China Specialty Group sponsored session at the AAG Annual Meeting.

The competition is open to students at all academic levels. Candidates may be undergraduates or graduate students. The student must be the sole author and presenter. Participants must have submitted the abstract and appropriate program participation fee to the AAG for participation at the annual meeting.

A \$250 prize will be awarded for the best paper, in addition to an award certificate and prepaid lunch at the AAG Awards luncheon. A travel award of \$50 will go to the first runner-up. A committee of faculty from the China Specialty Group will evaluate the papers. Evaluation criteria for the award include the soundness and creativity of the research design and methodology; validity of conclusions; and quality of the presentation. The award will be announced at the business meeting of the China Specialty Group in Philadelphia, and published in the CSG and AAG newsletters.

To be considered for the competition, authors should email a copy of the paper's title and abstract to the Chair of China Specialty Group by **7 January 2004**. Include author's name, academic level (undergraduate, master's, or doctoral), academic institution, department or program,

current address, phone number, and email. An electronic version of the paper, in Word format, must reach the chair no later than **7 February 2004**. For more information, contact Susan Walcott, Chair CSG, at swalcott@gsu.edu.

The CSG awarded the 2003 Best Student Paper Award to **Angela Leung**, University of Washington (adviser Kam-Wing Chan), for "The Role of Technology and Knowledge in FDI and Economic Development: A Case Study in Shenzhen, China," and the Travel Award to **Wei Tu**, Texas A&M University (adviser Daniel Sui), for "Toward Sustainable Urban Environmental Management: The Case of Shanghai."

Coastal and Marine SG

The Coastal/Marine (CoMa) Specialty Group of the AAG wishes to remind students to enter one of two competitions held in conjunction with the Philadelphia meeting. Full-time or part-time undergraduate or graduate students may compete for the Student Paper Merit Award or Student Illustrated Paper Award if they (1) are the first or sole author of an oral paper concerning coastal or marine geography, which they will be presenting—in either of the two formats—at the 2004 annual AAG meeting; (2) are a member of the AAG and of the Coastal and Marine Specialty Group (you can still join!); (3) followed AAG guidelines for submitting abstracts and registering; and (4) have submitted to the session organizer the completed application form, a copy of the abstract, and the assigned PIN number, to be received by **6 October 2003**. Poster presentations are not eligible. Papers are judged both on content and on the quality of the presentation.

Please note, Student Paper Merit Award candidates will present in a special session organized by the specialty group. The award consists of a \$100.00 grant to be used to defray AAG and Coastal and Marine Specialty Group membership dues and travel expenses to the annual meeting,

as well as an award certificate. Up to three awards may be given in any given year (best illustrated paper, best paper—physical processes, and best paper—anthropogenic interactions).

To apply for this contest, and to see a list of past winners, visit the Coastal and Marine web site at http://aag_coma.home.stead.com and look for the Student Merit Awards link, or email Dr. Diane Horn, Birkbeck College, London, at d.horn@bbk.ac.uk.

Community College Affinity Group and the Geography Education SG

The Community College Affinity Group and the Geography Education Specialty Group will cosponsor five sessions at the 2004 Annual Meetings held in Philadelphia. Papers presented in the sessions should illustrate successful strategies and/or methodologies used in teaching introductory geography courses.

The sessions and their chairs are: Physical Geography, Diana Casey, caseyd@muskegon.cc.mi.us; Cartography/GIS, Ann Johnson, ajohnson@esri.com; World Regional Geography, Herschel Stern, hstern@mcc.miracosta.cc.ca.us; Human/Cultural Geography, Charles Fuller, cfuller3@triton.edu; Economic Geography, Charles Fuller, cfuller3@triton.edu.

To participate in one of these sessions, please send an abstract to the chair by **1 October 2003**. Students get their first taste of our discipline in these courses—let's share the successes!

Energy and Environment SG

The Energy and Environment Specialty Group is sponsoring two awards for the Philadelphia Annual Meeting of the AAG. The **Daniel B. Luten Award** is for the best paper by a professional geographer, and the **Earl Cook Award** is for the best paper by a student. The awards include a \$250 prize, an engraved plaque, and formal announcement at the AAG meeting.

The four requirements are: (1) the topic must be on energy, environment, or

a mix of the two; (2) papers must be delivered verbally at the AAG Annual meeting in Philadelphia; (3) a letter of intent (including title and abstract) must be submitted (see below) by **30 September 2003**; and (4) four copies of the completed paper (in MSWord format) should be submitted electronically no later than **29 February 2004**.

Send correspondence and papers to Prof. Martin J. (Mike) Pasqualetti, Chair, Awards Committee of the EESG, Department of Geography, Arizona State University, Tempe, Arizona. Email is preferred for all correspondence. Send letter of intent and completed paper to Pasqualetti@asu.edu. Papers will be judged by a panel of experts within the Energy and Environmental Specialty Group of the AAG.

Geographic Perspectives on Women SG

The 2003 Glenda Laws Student Paper Competition for GPOW was won by **Karen Dias**, University of British Columbia, for "Virtual Sanctuary: Geographies of Pro-Anorexia Websites," and **Tiffany Muller**, University of Minnesota, for "Liberty for All? Lesbian Resistance in the Context of Contested Space."

The 2003 Jan Monk Service Award went to **Liz Bondi**, University of Edinburgh, and **Mona Domosh**, Dartmouth College, for launching the journal *Gender, Place and Culture* a decade ago.

GPOW is also happy to **sponsor sessions** at the 2004 AAG Annual Meeting that promote geographic research and education on topics relating to women, gender, race and class, as well as the use of feminist methods in geography. If you are organizing a session for the upcoming AAG Meeting in Philadelphia and want it to be sponsored by GPOW, please do the following:

Please send the following information to Laura Kate Boyer by email (Boyerl@rpi.edu) by **30 September**:

- Name of organizer
- Name of chair
- Names of all presenters and the titles of their papers

- Affiliations of everyone involved (organizer, chair, presenters).

Medical Geography SG

The Medical Geography Specialty Group (MGSG) will announce the winners of the 2004 **Jacques May Thesis Prize** at the Philadelphia meeting of the Association of American Geographers. Since 1985, the prize has been awarded to the best master's and doctoral theses addressing themes in medical geography broadly defined. Theses will be judged on their contribution to the field, their methodological approach, organization, and written composition.

Students planning on submitting a thesis for consideration need to contact the prize coordinator by **1 December 2003**. Please include the following information: full name, address, telephone and fax numbers, email address, department and university affiliation, name of the student's thesis advisor, current title of the thesis and a brief abstract. This information will be used to secure reviewers. Then two (2) copies of the complete thesis will need to be received by mail before the submission deadline: **15 December 2003**. Please send all materials to the Jacques May Prize Coordinator 2003–2004, Michael L. Dorn, Institute on Disabilities, 423 Ritter Annex, 1301 Cecil B. Moore Ave, Temple University, Philadelphia, PA 19122, email mdorn@temple.edu.

The winners will receive an official certificate at the AAG awards luncheon and a cash award. A check will be disbursed to the winner at the 2004 Medical Geography Specialty Group business meeting in Philadelphia.

Qualitative Research SG

The Qualitative Research Specialty Group (QRSG) is pleased to announce its annual student paper competition for both the M.A. and Ph.D. levels. The QRSG has grown tremendously in the past few years, and the quality of papers entered in the student paper competition has been outstanding. The group hopes this year's

competition will be even better than previous ones. To this end, they ask faculty to encourage students to enter the competition. Papers presented at a regional AAG meeting, a specialty group conference, or any other academic conference between April 2003 and the 2004 AAG Annual Meeting in Philadelphia (included) are eligible for consideration.

The competition is open and inclusive: the QRSG welcomes papers on a broad range of topics and from all of geography's subdisciplines. Papers should: (1) employ qualitative methods in the research and analysis process or, (2) be explicitly focused on qualitative methods. Regardless of topic or geographic subdiscipline, all papers should include a clear discussion of the qualitative methods used and a justification of the methods. Papers should be no longer than 30 pages in length, double-spaced, inclusive of figures, tables, and references. Two prizes will be awarded at the AAG Annual Meeting in Philadelphia meeting, one for the best M.A. and one for the best Ph.D. student papers. Each winner will be awarded \$150.

Students interested in participating are required to send one copy of their paper (either regular mail or electronic submission) to each of the following members of the QRSG student paper competition committee by **1 January 2004**: Fernando Bosco, Department of Geography, San Diego State University, San Diego, CA 92182-4493 (fbosco@mail.sdsu.edu); Kevin E. McHugh, Department of Geography, Arizona State University, Tempe, AZ 85287-0104 (kmchugh@asu.edu); Daniel Trudeau, Department of Geography, CB 260, University of Colorado, Boulder, CO 80309 (Daniel.Trudeau@colorado.edu).

The committee asks that participants indicate their name, affiliation, level of study (M.A., Ph.D.) and, if applicable, the conference at which the paper was presented. For more information contact Fernando Bosco at 619-594-7187 or fbosco@mail.sdsu.edu.

Continued on page 26

Continued from page 25

Transportation SG

Each year the Transportation Specialty Group awards at the Annual Meeting of the Association of American Geographers two prizes for outstanding student research in the field of transportation geography. The first prize is for a Ph.D. dissertation, while the second is for a master's thesis. Ph.D or master's theses completed during the previous academic year are eligible. Although theses in geography are preferred, theses coming from related disciplines are accepted. A thesis can only be submitted once. Please send a copy of the thesis to Dr. Benjamin Zhan, Department of Geography, Texas State University, San Marcos, TX 78666, or zhan@txstate.edu by **15 December 2003**. Electronic copies of theses in PDF format are preferred.

The Transportation SG is also seeking nominations for the **Ullman Award for Outstanding Contributions to the Study of Transportation Geography**. This award was established in 1990. Past recipients of the award include Edward Taaffe, Harold Mayer, Howard Gauthier, William Garrison, William Black, James Vance, Susan Hanson, Morton O'Kelly, Bruce Ralston, Donald Janelle, Thomas Leinbach, Brian Slack, and Kingsley E. Haynes. Those wishing to nominate an individual are requested to send the nomination to Dr. Benjamin Zhan, Department of Geography, Texas State University, San Marcos, Texas 78666, or zhan@txstate.edu by **31 December 2003**. Please send a letter of support outlining the accomplishments of the nominee and a copy of the nominee's vitae. We encourage nominations by email with attached digital copies of a support letter and the nominee's vitae in Microsoft Word or PDF format. The award will be presented at the 2004 AAG Annual Meeting in Philadelphia. ■

Quarter Century

The August/September 1978 issue of the *AAG Newsletter* contained news that on 22 May 1978, work by geographers at Oak Ridge National Laboratory was presented in a private session with President Carter, Secretary of Energy Schlesinger, Senate Minority Leader Howard Baker, Senator James Sasser, the President's Science Advisor Frank Press, Director of the Office of Energy Research John Deutch, TVA Board Chairman David Freeman, Congresswoman Marilyn Lloyd, Congressman John Duncan, and other guests. In the session, Dr. **Bob Honea**, a research staff geographer, stressed that spatial analysis is a necessary component of policy analysis and illustrated his point with studies of the National Energy Plan. Geographers played an increasingly prominent role in the Energy Division beginning with Honea's arrival in 1974. Dr. **Jerome Dobson**, who headed the group's water resource projects, and a study of water quantity impacts of the National Energy Plan, came as the second geographer a year later. By 1978, the Energy Division emphasized spatial and regional analysis as a major research program and employed geographers in key management roles.

Dr. **Thomas Wilbanks**, former Chairperson of the University of Oklahoma's Department of Geography, served as a senior research planner for the Division, and Dr. **Richard Davis**, a geographer, headed the Regional and Urban Studies Section....**Chauncy D. Harris**, Samuel N. Harper Distinguished Service Professor of Geography at the University of Chicago, was presented with the Alexander von Humboldt gold medal by the Gesellschaft für Erdkunde zu Berlin, in recognition of his fundamental work in the field of urban geography and his contributions to international contacts and collaboration. The Gesellschaft für Erdkunde zu Berlin is the second oldest geographical society in the world and the Alexander von Humboldt gold medal established in 1976 is its highest honor....The Trustees of the John Simon Guggenheim Memorial Foundation appointed Professor **Norman J. W. Thrower**, Department of Geography, UCLA, to membership on the Foundations' Advisory Board. From 1974-1978, Professor Thrower, who received a Guggenheim Fellowship in 1962-1963, served the Foundation as Special Advisor in Geography (and Cartography). ■

Corrections

The correct deadline for the **Glenda Laws Award** is 15 December 2003 not 31 October 2003 as published in the July/August 2003 issue.

The URL in the "Young Geographers for Hire," on page 12 of the July/August 2003 issue was listed incorrectly. The correct URL is www.slaconsortium.org.

Jobs in Geography

UNITED STATES

***ARIZONA, TUCSON 85721.** The Institute for the Study of Planet Earth seeks to fill two academic professional **Research Associate** positions in the **Climate Assessment for the Southwest (CLIMAS)** project. These positions report directly to the CLIMAS Program Manager. Job # 26097 focuses on research on the climatology/hydrology of the US Southwest as applied to climate impacts on the region. Emphasis is placed on transfer of scientific knowledge to stakeholders through development of informational products and decision support tools. Job #26098 emphasizes applications of social science research to the assessment of vulnerability to climatic stresses on human and natural systems in the Southwest and development of communication strategies to build stakeholder resilience and adaptation capacity. The individuals filling these two positions will be working closely together and with the program manager to achieve the mission of the project. Opportunities for collaboration with team members of specific project activities may also be available. Occasional travel may be required.

Required: PhD in a physical or social science discipline relevant to the study of climate and its effects on human and natural systems; working knowledge of basic computer software, including word processing, spreadsheet, and database programs; and working familiarity with climatic processes, preferably those affecting the US Southwest. For full details and qualifications, see postings at www.hr.arizona.edu/jobs.

To apply, please submit (for each position) a cover letter (citing job #), resume, and the names and contact information for three references to the address below. SEP 03-123.

Apply: Teresa Carochi, Institute for the Study of Planet Earth Division of Arizona Research Laboratories, The University of Arizona, PO Box 210156, Tucson, AZ 85721-0156. Review of application materials is currently ongoing and will continue until positions are filled. The University of Arizona is an EEO/AA Employer M/W/D/V.

***CALIFORNIA, BERKELEY 94720-4740.** University of California, Berkeley, tenure-track **Assistant Professor** position, starting 1 July 2004, pending budgetary approval. We are searching for a **human geographer** with

interests in the transformation and management of the earth's environment. Such a scholar will have primary training in historical, cultural, or economic geography, but should bring some background in an aspect of the bio-physical sciences (such as biogeography, ecology, geomorphology, or hydrology). Research interests in the following areas are especially encouraged: environmental history embracing the broad relations between culture and nature; the relations between science, technology, and environmental politics; and multilateral governance of the global environment. Submit letter of application, curriculum vitae, up to three reprints, and three letters of reference (please refer your referees to the University's statement on confidentiality, found at <http://apo.chance.berkeley.edu/evalltr.html>) by 1 December 2003. SEP 03-122-3.

Apply: Search Committee, Department of Geography, 507 McCone Hall. The University of California is an Equal Opportunity, Affirmative Action Employer.

***CALIFORNIA, LONG BEACH 90840-1101.** California State University, Long Beach, seeks a **human geographer** for a tenure track **assistant professorship**, specializing in political or economic geography and in one or more of the following: ethnicity, gender, globalization, migration, political economy, or tourism, in an urban or comparative context. A foreign regional specialty is preferred, as are ability to secure extramural funding and interdisciplinary links in the humanities and social sciences.

Candidates must demonstrate ability to teach a combination of lower division general education courses (introductory human, world regional, and/or human diversity in the US), as well as upper division and graduate courses in political and/or economic geography and in their areas of specialization. SEP 03-104.

For more information, please visit <http://www.csulb.edu/geography/> or contact Vincent Del Casino, Department of Geography, California State University, Long Beach, CA 90840-1101. Voice 562-985-2357. Fax 562-985-8993. Email vdelcasi@csulb.edu.

"Jobs in Geography" lists positions available with US institutions who are Equal Opportunity Employers seeking applications from men and women from all racial, religious, and national origin groups, and occasional positions with foreign institutions.

Rates: Minimum charge of \$150. Listings will be charged at \$1.25 per word. Announcements run for two consecutive issues unless a stated deadline permits only one listing. The charge for running an announcement more than twice is one-third the original charge for each subsequent listing. We will bill institutions listing jobs after their announcements appear in JIG for the first time.

Deadline: JIG announcements must reach the AAG *before the first of the month* to appear in JIG for the following month (eg: 1 January for February issue). Readers will receive their Newsletter copies between the 5th and the 15th of the month. Schedule job closing dates with these delivery dates in mind.

Format: Announcements should be sent as an attachment or in the body of an e-mail to jig@aag.org. The announcements must be saved in Microsoft Word 5.0 or greater, or Corel WordPerfect 6 or greater. No job announcements accepted by phone. Follow format and sequence of current JIG listings. All positions are full-time and permanent unless otherwise indicated. State explicitly if positions are not firm. Employers are responsible for the accuracy and completeness of their listings. JIG will not publish listings that are misleading or inconsistent with Association policy. Employers should notify the Editor to cancel a listing if the position is filled. The Editor reserves the right to edit announcements to conform with established format. All ads must be in English.

Display ads are also available. Ads will be charged according to size: 1/6 page (2 1/4" x 5") \$335; 1/3 page vertical (2 1/4" x 10") \$475; 1/3 page square (4 3/4" x 4 3/4") \$475; 1/2 page horizontal (7" x 5") \$625; 2/3 page vertical (4 3/4" x 10") \$750; Full page (7" x 10") \$900. Display ads run for one month only.

Affirmative Action Notice: The AAG Affirmative Action Committee requires job listers to send to the JIG Editor the name, academic degree, sex, and rank of each person appointed as a result of an announcement in JIG.

Geographer Available. A service for AAG members only. Send personal listings of 50 words or less, following the format of current listings. Listings run for two consecutive issues. Enclose \$25 with listing. A blind listing service is available - the editor will assign a box number and forward inquiries to the member listed.

* Indicates a new listing

Review of complete applications begins 15 October 2003, continuing until the position is filled or search is cancelled. An EEO EMPLOYER.

***CALIFORNIA, LOS ANGELES 90095-1524.** University of California, Los Angeles. The Department of Geography invites applications for an **Assistant/Associate Professor** position in **Geographic Information Systems and Technologies (GIST)**, beginning 1 July 2004 and pending budget approval. Candidates must possess both a strong technical background in GIST and its applications, and experience with academic program development and administration. The successful candidate will play an integral role in developing the Master of Geographic Information Systems and Technologies (MGIST) at UCLA, a professional degree that emphasizes geographic thinking and applications of GIST in geographic analysis and representation. Demonstrated excellence in research and teaching and a strong commitment to procuring extramural research funding are required. UCLA's Department of Geography is among the top ranked geography departments in the nation and offers a multi-faceted faculty from a variety of subfields, including GIST.

Women and minorities are especially encouraged to apply. UCLA is an AA/EOE employer. Applicants should send a curriculum vitae, statement of research and teaching interests with special reference to how they can contribute to a professional degree program, and contact information for three referees to the address below no later than 1 December 2003. SEP 03-114.

Apply: Search Committee Chair, Department of Geography, UCLA, Box 951524, 1255 Bunche Hall, Los Angeles, CA 90095-1524.

***CONNECTICUT, WILLIMANTIC 06226.** Eastern Connecticut State University. Department of Environmental Earth Science. **Endowed Chair in Sustainable Energy Studies.** Individuals with outstanding records in areas related to sustainable energy are invited to apply. This is a tenure track position at the rank of **full professor**. The successful candidate will a) develop an interdisciplinary, undergraduate energy studies curriculum b) seek external funding to develop interdisciplinary initiatives in teaching, research, and service c) interact with Eastern Connecticut State University's Institute for Sustainable Energy to build connections between the sustainable energy program and the external community and d) develop workshops and non-credit courses on issues such as energy conservation, energy efficiency, and environmental impacts of energy use.

Required qualifications include: Earned doctorate degree in a related area; teaching experience in a related area; outstanding scholarship; demonstrated ability to develop and implement programs; ability to work cooperatively with faculty as well as a variety of community, state, national agencies and groups; and evidence of ability to obtain external funding. Candidates should send a letter of interest and a resume with three references (include e-mail addresses) to the address below. SEP 03-127.

Apply: Dr. Peter Drzewiecki, Department of Environmental Earth Science, Eastern Connecticut State University, 83 Windham Street, Willimantic, CT 06226. Voice 860-465-4322. Fax 860-465-5213. Email drzewiekip@easternct.edu. Review of applications begins immediately. Visit: www.easternct.edu and www.sustainenergy.org. Eastern is an AA/EOE employer. Women, members of protected classes, and people with disabilities are encouraged to apply.

***DISTRICT OF COLUMBIA (WASHINGTON, DC) 20009. AAG Journals Manager.** The AAG seeks a Journals Manager to coordinate the day-to-day workflow of the association's two quarterly journals: the *Annals of the Association of American Geographers* and *The Professional Geographer*. The Journals Manager will direct the flow of manuscripts, respond to author inquiries, maintain correspondence between editors and authors, assemble each issue of the journals, and see each issue through to final publication. Manuscripts are submitted via an online manuscript submission system.

The position entails working closely with editors, authors, reviewers, and the publisher. The ideal applicant should be highly organized, possess strong interpersonal, diplomatic, and written communication skills, be detail oriented, and have experience working in a deadline driven environment. General computer skills and familiarity with copyediting is necessary. Work on other association publications will be required at times.

Consideration of applications will begin immediately and the search will continue until the position is filled. Compensation will be commensurate with experience and qualifications. Please submit a letter of application, CV, and the names of three individuals qualified to comment on your abilities and experience.

Apply: Patricia Solís, Association of American Geographers, 1710 Sixteenth Street NW, Washington, DC 20009 or via email to psolis@aag.org.

The AAG is committed to equal opportunity and affirmative action in hiring, retention, and promotion.

***INDIANA, BLOOMINGTON 47405-7005.** Indiana University-Bloomington. The College of Arts and Sciences invites applications for two tenure-track positions at the rank of **Assistant Professor** with a research focus on **political economy/development studies**. The persons will be expected to work with scholars from multiple disciplines and to participate in IU's strong and growing programs in international and area studies. These will be tenure-track appointments in a social science discipline (Anthropology, Economics, Geography, Political Science, or Sociology); applicants with other or interdisciplinary degrees should indicate a disciplinary preference. The positions are part of IU's multi-year commitment to hire 25 scholars in political economy/development, globalization, international/area studies, and diaspora studies. Applicants should have or expect to receive doctoral degree before August 2004. Strong publication and teaching record or the promise of the same required. Applications received by 15 October guaranteed full consideration; the positions will remain open until filled. Applicants should send a letter of application describing research and teaching interests, curriculum vitae, sample publications, and syllabi. Three letters of reference should be mailed under separate cover. SEP 03-115.

Apply: Daniel Knudsen, Director, International Studies, Indiana University, Woodburn Hall 332, Bloomington, IN 47405-7005 USA. Indiana University is an Equal Employment Opportunity/Affirmative Action Employer and we strongly encourage applications from women and minorities.

INDIANA, INDIANAPOLIS 46202. Indiana University-Purdue University, Indianapolis. The Department of Geography, The School of Informatics, and The Polis Center invite applications for a new joint tenure track position in **Geographic Information Science** at the **advanced assistant or associate professor** level, with a focus on visualization or health applications. Responsibilities will include scholarly activities, the enhancement of cross-campus collaborations, and graduate and undergraduate teaching. A record of externally funded research in Geographic Information Science is expected. Salary will be competitive and negotiable. The appointment, to be based in the Department of Geography, will begin August 2004.

IUPUI, a leader in urban higher education, is located in the center of Indianapolis, in close proximity to the centers and resources of state government. IUPUI has excellent facilities for

GIS, visualization, and health science research. A new Communications Technology facility is being constructed to house the School of Informatics (the first informatics school in the U.S.), the Abilene operations center (the sub-network that makes up the backbone for Internet 2002), and three Computing Research labs, one of which will focus on visualization. The Polis Center is a leading university-based national center in applied GIS. Excellent opportunities also exist to collaborate with faculty of the IUPUI medical center, the School of Nursing, and the Department of Public Health.

Applicants should provide a cover letter, curriculum vita (including links to electronic media), statement of research interests, and contact information for three referees (including E-mail addresses and fax numbers). Screening of applicants will begin in August 2003 and continue until the position is filled. Ph.D. in Geography or closely related field required at time of appointment. IUPUI is an AA/EO employer; women and minorities strongly urged to apply. Please send questions and applications to the address below. JUL 03-90.

Apply: Dr. Jeffrey Wilson, Department of Geography, Indiana University - Purdue University Indianapolis, 425 University Blvd., Indianapolis, IN 46202. Email jeswilso@iupui.edu.

***IOWA, CEDAR FALLS 50614-0406.** University of Northern Iowa. **Assistant Professor.** Tenure-track position beginning August 2004. Ph.D. required. Expertise in **Urban Geography**. Teaching duties will include introductory human geography, North American Cities, and advanced courses in area of expertise. Ability to teach introductory geographic information systems (GIS) desirable. University-level teaching experience and demonstrated potential for research and scholarship are required. The Department is scheduled to move into a newly renovated building with state-of-the-art facilities in 2005. Salary is commensurate with qualifications and experience. For more information about the Department, visit our home page at <http://fp.uni.edu/geography>. The Department encourages applications from minority persons, women, persons with disabilities, and Vietnam era veterans.

Submit letter of application, curriculum vitae, and the names and contact information of three references. Complete applications must be received by 20 October 2003 to be given full consideration. SEP 03-113.

Apply: Philip W. Suckling, Head, Department of Geography. Voice 319-273-2772. Fax

319-273-7103. Email suckling@uni.edu. The University is an equal opportunity employer with a comprehensive plan for affirmative action.

LOUISIANA, RUSTON 71272. Louisiana Tech University, School of Forestry, invites applications for two positions.

Position 1. Tenure-track, 9-month, **Assistant Professor GIS/Remote Sensing.** Candidates should have an earned Ph.D. in forestry or a related discipline with specific knowledge, skills, and research interests in one or more of the following areas: GIS (ESRI), GPS (Trimble), remote sensing (ERDAS), and aerial photo interpretation with emphasis on natural resources. Responsibilities include teaching (70%), research (25%) and service (5%); teaching introductory through advanced courses in GIS, Photo Interpretation and Remote Sensing; assisting with instruction in GPS/GIS integration; assisting lab supervisor with GIS/remote sensing hardware and software maintenance and upgrades; maintaining distance education/internet curriculum; and seeking funding for research. A strong commitment to undergraduate education, teaching, and interacting with students and strong communications skills are necessary for the successful candidate.

Position 2. Non-tenure-track, 12-month, **Spatial Data Laboratory Supervisor/Instructor.** Candidates should have an MS in GIS, Forestry, Natural Resources, Geography, or combinations of these. At least 3 years experience is required with ESRI ArcInfo, ArcView, and ERDAS software, Trimble GPS equipment, and upgrading and maintaining hardware, software, and firmware typically used in GIS/GPS applications. Preference will be given those with teaching experience and distance education/internet curriculum background. Responsibilities include Laboratory Supervision/Maintenance (90%) and Teaching (10%); maintenance of distance education/internet courses in Geographic Information Science; assistance with instruction in introductory and intermediate level GIS/GPS courses; administration of Windows 2000 in a classroom setting; updating a website; and assisting faculty with GIS/GPS applications in research.

Candidates should specify which position they are applying for and submit a detailed curriculum vita; a copy of undergraduate and graduate transcripts; and names, addresses, telephone numbers and email addresses of at least four (4) references. Candidates for the Assistant Professor position should also submit a cover letter summarizing teaching and research interests and philosophy.

Screening of applications begins 1 August and continues until the positions are filled. Positions

available beginning 1 September 2003. Request via email or download a full position announcement at www.latech.edu or www.ans.latech.edu/forestry-index.html. Louisiana Tech University is a member of the University of Louisiana System and an EEO/AA employer. Minorities and women are encouraged to apply. JUL 03-100.

Apply: Dr. James Dyer, Chairperson, Spatial Data Lab Search Committee, School of Forestry, Louisiana Tech University, PO Box 10138, Ruston, LA 71272-0045. Voice 318-257-4985. Fax 318-257-5061. Email jdyer@LaTech.edu.

***MINNESOTA, MINNEAPOLIS 55455.** Department of Geography, University of Minnesota, Minneapolis. The Department invites nominations and applications for a tenure-track, 100% time, nine-month, **assistant professor** position, beginning 30 August 2004. We are seeking a **Human Geographer** to extend departmental strengths in one or more of the following areas: race, ethnicity, and/or gender; migration, immigration, and/or diasporas; urban analysis and planning; urban natures/environments; technology and society; culture, politics and power; and questions of development and livelihood strategies. The successful candidate will demonstrate an ability to draw on or contribute to pertinent geographic and cognate theory. Regional and field experience outside North America is desirable.

Applicants must hold a Ph.D. in Geography or related discipline by the date of appointment. The successful candidate will be expected to maintain a strong program of research and publication including regular applications for external research support, to develop and/or participate in a superior instructional program at the undergraduate and graduate levels, and to build links between geography and related academic departments. Salary will depend on the successful candidate's qualifications, consistent with collegiate and university policies.

The University of Minnesota is committed to the policy that all persons shall have equal access to its programs, facilities, and employment without regard of race, color, creed, religion, national origin, sex, age, marital status, disabilities, public assistance status, veteran status, or sexual orientation. Applications should include a letter of interest; a statement describing research and teaching interests and expertise; a curriculum vitae; and the names, addresses, email addresses, and telephone numbers of three referees. Review of applications will begin 1 October 2003 and continue until the position is filled. Applications materials should be sent to the address below. SEP 03-124a.

Apply: Human Geographer Search Committee Chair, Department of Geography, University of Minnesota, 414 Social Sciences Building, 267 19th Ave So, Minneapolis, MN 55455.

***MINNESOTA, MINNEAPOLIS 55455.** Department of Geography, University of Minnesota, Minneapolis. The Department of Geography announces the continuation of its search for an **open-rank** position in **Physical Geography** to enhance its current program that emphasizes biogeography, environmental reconstruction, and climatology. The minimum qualification at the assistant professor level is a Ph.D. in geography or a closely-related field by the time of appointment. The minimum qualification for the associate or full professor position is a Ph.D. in geography or a closely-related field and a record of scholarship and teaching that meets the qualifications for a tenured-position in the Department of Geography at the University of Minnesota. The appointment is nine-month, 100%-time, and will be at the rank of tenure-track assistant professor, tenured associate professor, or tenured professor, depending on qualifications and experience, and consistent with collegiate and University policy. Appointment start date is 30 August 2004. Salary will depend on the qualifications and experience of the individual and will be consistent with collegiate and University policy. The successful candidates will be expected to maintain a strong program of research and publication, including regular and successful applications for external research support. The successful candidates also will be expected to develop and participate in a superior instructional program at the graduate and undergraduate levels.

The University of Minnesota is committed to the policy that all persons shall have equal access to its programs, facilities, and employment without regard to race, color, creed, religion, national origin, sex, age, marital status, disability, public assistance status, veteran status, or sexual orientation.

Applications should include a letter of interest, curriculum vitae, and the names, addresses, e-mail addresses, and telephone numbers of three referees. Materials should be sent to the address below. SEP 03-124b.

Apply: Professor Richard H. Skaggs, Chair, Physical Geography Search Committee, Department of Geography, University of Minnesota, Minneapolis, MN 55455. Voice 612-625-6643. Fax 612-624-1044. Email skaggs@atlas.socsci.umn.edu. Evaluation of applications begins on 1 October 2003 and continues until the position is filled.

***MINNESOTA, ST. PAUL 55105.** Applications are invited for a tenure-track position in **Urban Geography** at the **assistant professor** level to begin in September 2004. PhD in Geography required. Successful candidates will teach a range of courses such as metropolitan analysis, transportation and land use, quantitative research methods of geography, applied urban GIS, and a course on North America that will support the College's multicultural curriculum. If appropriate, successful candidates can play important roles in the interdisciplinary and other programs listed on the College web page, including African-American Studies, Comparative Race Studies, Environmental Studies, and Women's and Gender Studies, and the First Year Seminar Program.

Salary will be competitive and commensurate with qualifications and experience. Please send CV, pertinent publications, course syllabi and letter of application discussing research and teaching interests to the address below. SEP 03-106.

Apply: David Lanegran, Chair, Department of Geography, Macalester College, 1600 Grand Ave., St. Paul, MN 55105. Applications received by 15 October 2003, will receive first consideration.

Macalester College is a selective, private liberal arts college in the Minneapolis-St. Paul metropolitan area. The College enrolls 1800 students from almost all 50 states and approximately 80 countries. Macalester is an Equal Opportunity/Affirmative Action employer that prides itself on providing support for excellence in teaching and in faculty scholarship. We are especially interested in candidates committed to working with students of diverse backgrounds. Successful candidates will be expected to pursue rich research programs as well as to help sustain, as appropriate, the College's emphases on multiculturalism, internationalism, and service.

***NEW YORK, SYRACUSE 13244-1020.** Syracuse University. The Department of Geography invites applications for a full-time tenure track position in **Physical Geography** beginning August 2004. The position is **open rank**. Ph.D. required at time of appointment.

Physical geography at Syracuse emphasizes landscape dynamics; specifically processes of ecological/biogeographic and geomorphological change in response to human and natural forces across varied spatial and temporal scales. Syracuse University has made a commitment to expanding and increasing the stature of the physical geography program. We seek a mid-level or senior physical geographer who will mesh with existing strengths, and who will take a lead in furthering the development of our program in the areas of

biogeography and/or geomorphology. Junior scholars who have begun to establish a dynamic teaching, research, and grant record will be seriously considered. The successful candidate will share in the teaching of introductory physical geography, and will teach upper division and graduate courses in his/her area of expertise. Normal teaching responsibility is two courses per semester. A demonstrated ability to secure external funding and a record of excellence in publishing, teaching and advising is expected for appointment with tenure at the associate or full professor ranks.

The department is committed to increasing the diversity of its faculty and especially welcomes applications from women, racial/ethnic minorities, and persons with disabilities.

Further information on the department is available at www.maxwell.syr.edu/geo/.

Send a letter of application outlining research agenda and teaching philosophy and interests, a curriculum vitae, and three letters of recommendation by 10 November 2003 to the address below. SEP 03-111a.

Apply: Professor Jacob Bendix, Chair, Physical Geography Search Committee, Department of Geography, 144 Eggers Hall. Voice 315-443-2605. Fax 315-443-4227. Email geo-inquiry@maxwell.syr.edu.

Syracuse University is an Affirmative Action/Equal Opportunity Employer

***NEW YORK, SYRACUSE 13244-1020.** Syracuse University. The Department of Geography invites applications for a full-time tenure track or tenured position in **Urban Geography**, at **assistant or associate professor** level, effective Fall 2004. Ph.D. required although a doctoral candidate could be appointed contingent upon completion of the Ph.D. by the time of appointment.

We seek an urban geographer engaged in theoretical and empirical work that critically explores contemporary or historical relationships between political-economic change and social justice. We are specifically seeking a scholar who can make significant contributions to department and Maxwell School initiatives in the study of gender; race; citizenship, identity, and rights; labor and labor markets; international development; and/or community transformation.

Normal teaching responsibility is two courses per semester. The successful candidate will share in the teaching of introductory human geography courses, and will teach upper division and graduate courses in her/his areas of expertise. A demonstrated ability to secure external funding and a record of excellence in publishing, teaching, and

advising is expected for appointment with tenure at associate professor rank. The successful candidate will be expected to teach and advise in the department at both the graduate and undergraduate levels.

The Syracuse University Department of Geography and the Maxwell School provide ample opportunities for interdisciplinary collaboration. We encourage applications from scholars with regional expertise outside of North America. Successful candidates will have opportunities to affiliate with regional and international-studies programs including the African Initiative, South Asia Center, Program on Latin America and the Caribbean, European Union Center, and the Global Affairs Institute, as well as topical initiatives such as the Program on the Analysis and Resolution of Conflict, the Space and Place Initiative, Citizenship and Social Transformation, Gender and Globalization, the Metropolitan Studies Program, the Campbell Institute, and the Global Political Economic Research Consortium. See www.maxwell.syr.edu for more information.

The department is committed to increasing the diversity of its faculty and especially welcomes applications from women, racial/ethnic minorities, and persons with disabilities.

Further information on the department is available at www.maxwell.syr.edu/geo/.

Review of applications will begin on 10 November 2003 and continue until the position is filled. Send a letter of application outlining current research, teaching philosophy and interests, a curriculum vitae, and three letters of recommendation to the address below. SEP 03-111b.

Apply: Professor Don Mitchell, Chair, Department of Geography, 144 Eggers Hall. Professor Mitchell may be reached at geo-inquiry@maxwell.syr.edu or 315-443-2605.

Syracuse University is an Affirmative Action/Equal Opportunity Employer

***OHIO, ATHENS 45701-2979.** Ohio University. The Department of Geography and the Program in Women's Studies invite applications for a tenure track, **assistant professor**, joint appointment (2/3 Geography and 1/3 Women's Studies), with tenure awarded in **Geography**, starting September 2004. Ph.D. in Geography is required. We seek candidates with research and teaching interests in **Gender and Environment** and/or **Gender and Development** in a global context. In Geography, the successful candidate is expected to teach both introductory courses and upper division and graduate courses developed by the candidate. In Women's Studies, the

teaching assignment will include the introductory and Global Feminism courses.

Specializing in human-environmental interactions, the Department of Geography has 11 faculty members, 140 majors, and 25 graduate students. To learn more, see our Web site: www.ohiou.edu/Geography. Currently a certificate program, Women's Studies offers credit for more than 75 courses drawn from over 20 departments across five colleges. The Program is in the process of developing an undergraduate major that will include an emphasis on global feminism. For more information, please see our Web site at www.ohiou.edu/womenstudies. To apply, please submit a letter of application, vita, graduate transcripts, three letters of recommendation, publications, and teaching evaluations to the address below. SEP 03-119.

Apply: Ronald Isaac, Chair, Department of Geography, Ohio University, Athens, OH 45701. Voice 740-593-1140. Email isaacr@ohio.edu. Please include your e-mail address. The review of applications will begin 1 October 2003 and continue until the position is filled. Ohio University is an AA/EEO employer.

OHIO, COLUMBUS 43210. Professorship in Race and Ethnicity in the Americas. The College of Social and Behavioral Sciences at The Ohio State University seeks applications for a senior Professor whose scholarly focus is on race and ethnicity in the Americas. The position is open to candidates from all of the disciplines in the College. An appointment may be made in a single department or in multiple departments, as appropriate.

The College has nine academic units: Anthropology, Economics, Geography, Journalism/Communication, Political Science, Psychology, Sociology, Public Policy and Management, and Speech and Hearing Science. The College also houses five interdisciplinary research units: the Criminal Justice Research Center, the Center for Human Resource Research, the Center for Survey Research, the Center for Urban and Regional Analysis, and the Initiative in Population Research. All of these units, which sponsor and foster collaborative research efforts, could be relevant to the new professor, depending on his or her specific research program.

The new Professor will find a number of colleagues already at Ohio State with well-defined interests in various aspects of race and ethnicity. He or she will also be an important figure in helping attract additional scholars to Ohio State with interests in race and ethnicity. The appointee will also have the opportunity to

participate in the activities of the newly-formed Kirwan Institute for Race and Ethnicity in the Americas, a multidisciplinary center founded jointly by the Colleges of Social and Behavioral Sciences, Humanities, and Law. The Institute brings together scholars from all parts of the university with a common interest in research into issues of race and ethnicity.

The University is located in the state capital of Ohio, Columbus, with a metropolitan population of about 1.25 million. This location affords many opportunities for collaboration with local, state, federal, and nonprofit agencies and organizations, and the community offers a high quality of life for both individuals and families.

Candidates for the position should have a record of excellence in scholarly publications, teaching, and service in an area relevant to the study of race and ethnicity in the Americas. Academic credentials appropriate for appointment as a full professor in the College are required. Applicants should submit curriculum vitae and names of three references to the address below. JUL 03-99.

Apply: Janet M. Weisenberger, Ph.D., Associate Dean, Chair, Search Committee, College of Social and Behavioral Sciences, Ohio State University, 1010 Derby Hall, 154 N. Oval Mall, Columbus, OH 43210. Voice 614-688-3167. Fax 614-292-9530. Email jan+@osu.edu.

For full consideration, applications should be received by 31 October 2003; review of applications will continue until the position is filled.

The Ohio State University is an Equal Opportunity/Affirmative Action Employer. Qualified women, minorities, Vietnam era Veterans, disabled veterans and the disabled are encouraged to apply.

***OREGON, EUGENE 97403-1251.** University of Oregon. Tenure-track **Assistant or Associate Professor** position beginning September 2004. Geographer whose interests focus on **cartography and geographic visualization**. Preference will be given to applicants actively engaged in both conceptual and practical aspects of cartography and geographic visualization, including data representation and information design. Applicants should have a demonstrated interest in contributing to a program that fosters links between human and physical geography. Duties include teaching courses in the geographic information sciences, maintaining a strong program of research and publication, and supervising masters and doctoral students. Ph.D. must be in hand by September 2004. Send letter of application that details research and teaching interests, professional accomplishments, and a

future research plan; curriculum vitae; and the names and contact information (not letters) of exactly three referees. No electronic applications. We encourage applications from members of underrepresented groups. EO/AA/ADA institution committed to cultural diversity. To assure full consideration, applications must be received by 17 October 2003. SEP 03-121.

Send materials to Professor P. J. Bartlein, Search Committee Chair, Department of Geography, University of Oregon, 107 Condon Hall, 1251 University of Oregon, Eugene, OR 97403-1251.

***PENNSYLVANIA, LOCK HAVEN 17745.** Lock Haven University of Pennsylvania, Social Science Education in the disciplines of History, Political Science, Economics, or Geography.

Applications are being accepted for a full-time, tenure-track faculty position in **Social Studies Education** beginning 10 January 2004. Duties include teaching discipline-based courses in any one of the following areas: Political Science – American National Government/Political Theory; Economics; World History; Geography – lower and upper level course; and courses in social studies educational methods. For a full description of the position, qualification requirements and application information, please go to our posting at www.lhup.edu/HR/positions/social%20studies%20education%20-%20TT%20spring%2004.htm.

LHUP is an equal opportunity/affirmative action employer and encourages applications from minorities, women, veterans, and persons with disabilities. LHUP is a member of Pennsylvania's State System of Higher Education. LHUP's website address is www.lhup.edu. SEP 03-102-1.

***PENNSYLVANIA, PHILADELPHIA 19122.** Temple University. The Department of Geography and Urban Studies (www.temple.edu/gus) will make a tenure-track appointment at the **Assistant Professor** level for the 2004-05 academic year in **Geographic Information Systems** combined with any other area(s) in the department's curriculum. Geography/Urban Studies at Temple focuses on urban, regional, environmental, and international development studies with broad theoretical and methodological approaches. The successful candidate will have earned a PhD and will demonstrate a strong commitment to research. We seek a collaborative scholar of the highest caliber to join our department, as part of a broad effort to build the faculty

across the social sciences. Teaching duties will include both undergraduate and Masters level courses. We will review completed applications beginning 1 October and continue until the position is filled.

Please forward a letter of application, CV, and transcripts of collegiate work, and arrange to have three letters of recommendation sent to the address below. SEP 03-107.

Apply: Sanjoy Chakravorty, Chair of the Search Committee, Dept. of Geography & Urban Studies, Temple University, 310 Gladfelter Hall, 1115 W. Berks Street, Philadelphia, PA 19122. Temple University is an Equal Opportunity employer.

SOUTH CAROLINA, COLUMBIA 29208. University of South Carolina. The Department of Geography at the University of South Carolina invites applications for **two** tenure-track positions in **Human Geography** at the rank of **Assistant Professor** to begin 15 August 2004. PhD in geography or closely allied discipline required at time of appointment. All subspecialties considered (including but not limited to globalization, urbanization, sustainability, and medical geography), with a preference for candidates with interests in the Atlantic World (Latin America, the Caribbean Islands, Africa, Europe, and North America). Demonstrated potential for excellence in research and teaching required. Successful candidates will join a 19-member department that offers bachelors, masters, and PhD programs in integrative geography. The department will begin the initial screening for these positions on 15 October 2003, however, we will accept applications until the positions are filled. To apply, send letter of application, curriculum vitae, and the names and addresses (including e-mail addresses) of three referees to the address below. Email applications accepted. JUL 03-93-3.

Apply: William L. Graf, Search Committee Chair, Department of Geography. Voice 803-777-5234. Fax 803-777-4972. Email graf@sc.edu.

For additional information, visit our departmental web site at www.cla.sc.edu/geog. The University of South Carolina is an Equal Opportunity/Affirmative Action Employer.

***TEXAS, AUSTIN 78712-1098.** The University of Texas at Austin. The Department of Geography invites applicants for an anticipated tenure track **Assistant Professor** position in geography, with an emphasis on **culture, society, and environment**, beginning Fall 2004.

Research and teaching duties will require expertise in some combination of the following thematic specialties: conservation, parks, urban environments and cultural landscapes, social geography, political geography, and/or impacts of globalization and global change. International research experience a plus. Must be willing to contribute to departmental strengths in GISc, directly or through collaboration. Position will require research, teaching of undergraduate and graduate courses, as well as service to the department.

Applicants should hold a Ph.D. in Geography or related relevant field(s) by the time of appointment; may be appointed as instructor if satisfactory progress toward completion of requirement for a doctoral degree is demonstrated. In the cover letter, candidates must present evidence of teaching and research/publications excellence or potential for the same

For more information see geography's web site at www.utexas.edu/cola/depts/geography/. Send letter of application, curriculum vitae, statement of research and teaching interests and expertise, and names of three referees. Position is contingent on funding. Applications will be considered beginning 1 November 2003, and will continue to be considered until the position is filled. Women and minorities are encouraged to apply. AA/EOE. SEP 03-125b.

Apply: Dr. Gregory W. Knapp, Chairman, Dept. of Geography, University of Texas at Austin, Austin, Texas 78712. Email utgeog@uts.cc.utexas.edu.

***TEXAS, AUSTIN 78712-1098.** The University of Texas at Austin. The Department of Geography invites applicants for an anticipated position in **Physical Geography** (Quaternary Environments), beginning Fall 2004. **Rank open**, commensurate to qualifications and/or expertise.

Research and teaching duties will require expertise in some combination of the following thematic specialties: landscape adjustment to Quaternary climatic and/or environmental change, geoarcheology, geomorphology, landscape ecology, palynology and paleoecology, soils and stratigraphy, and vegetation science. Must be able to integrate research with departmental strengths in GISc, directly or through collaboration. Position will require research, teaching of undergraduate and graduate courses, as well as service to the department.

Applicant should hold a Ph.D. in Geography or related field by the time of appointment; may be appointed as instructor if satisfactory progress

toward completion of requirement for a doctoral degree is demonstrated. In the cover letter, candidates must present evidence of teaching and research/publications excellence or potential for the same.

For more information about the department see geography's web site at <http://www.utexas.edu/cola/depts/geography/>. Send letter of application, curriculum vitae, statement of research and teaching interests and expertise, and names of three referees. Position is contingent on funding. Applications will be considered beginning 1 November 2003 and will continue to be considered until the position is filled. Women and minorities are encouraged to apply. AA/EEO. SEP 03-125a.

Apply: Dr. Gregory W. Knapp, Chairman, Dept. of Geography, University of Texas at Austin, Austin, Texas 78712. Email utgeog@uts.cc.utexas.edu.

***TEXAS, NACOGDOCHES 75962-3045.**

The Department of Political Science and Geography at Stephen F. Austin State University invites applications for a tenure-track **Assistant Professor of Geography** beginning Fall 2004. A Ph.D. is preferred but an ABD who will be completed within one year of appointment is acceptable. The successful candidate must be committed to teaching excellence. The geography program offers B.S./B.A. degrees, provides service courses to other disciplines, and is involved with interdisciplinary degree programs. The successful candidate should be a broadly trained geographer who will teach introductory courses and advanced courses each semester from a broad inventory of course offerings. Academic expertise in urban and economic geography is desirable. Review of applications will begin 27 October 2003. Please submit a letter of application describing teaching and research interests, a curriculum vita, evidence of quality teaching, publication reprints, photocopies of transcripts, and the contact information for five references. Stephen F. Austin State University is an Equal Opportunity/Affirmative Action employer. SEP 03-101.

Apply: Dr. James Lowry, Geography Search Committee Chairperson, Department of Political Science and Geography, Box 13045 SFASU, Stephen F. Austin State University, Nacogdoches, TX 75962-3045. Voice 936-468-3903. Email jlowry@sfasu.edu.

***TEXAS, SAN MARCOS 78666-4616.** Southwest Texas State University (name change to Texas State University-San Marcos effective 1

September 2003). **Chair, Department of Geography** beginning in August 2004. The position is a 12-month appointment at a nationally competitive salary. Must be qualified to hold the rank of **Professor of Geography** and have significant administrative experience, preferably as a department head or chair. Candidate must hold a PhD in Geography, have a significant record of research accomplishments, external funding, and a commitment to teaching excellence at both the undergraduate and graduate levels. The particular research specialization is open. Teaching load is negotiable.

Applicants should include a curriculum vitae, cover letter highlighting administrative experience, research record, external funding, and teaching interests, and a list of names, addresses, phone numbers and e-mail addresses of three references. All application materials should be sent directly to the search committee chair. Review of applications will begin on 3 November 2003 and continue until the position has been filled.

The SWT Geography Department, the largest in the U.S., currently has 29 faculty members, 509 undergraduate majors, 162 master's students, and 35 PhD students and offers a BA, BS, MS, Master of Applied Geography, and PhD in Geography with doctoral specializations in environmental geography, geographic information science, and geographic education. Integral to the department are three nationally recognized research centers: The Gilbert M. Grosvenor Center for Geographic Education, the James and Marilyn Lovell Center for Environmental Geography and Hazards Research, and Texas Center for Geographic Information Science. For more information about the department, please visit our web site at www.geo.swt.edu.

San Marcos is located at the center of the burgeoning San Antonio-Austin Corridor, yet retains a small-town atmosphere with a relatively low cost of living and a pleasant climate.

Enrolling more than 25,000 students, Southwest Texas State University is an equal opportunity educational institution, and as such, does not discriminate because of race, color, creed or religion, sex, national origin, age, physical or mental disabilities, or status as a disabled or Vietnam era veteran. Southwest Texas State University is a member of the Texas State University System. SEP 03-118.

Apply: Dr. David Glassman, Geography Chair Search Committee, Department of Anthropology, Southwest Texas State University, San Marcos, Texas 78666-4616. Voice 512-245-8272. Fax 512-245-8076. Email dg02@swt.edu.

***TEXAS, SAN MARCOS 78666-4616.** Southwest Texas State University (Texas State University-San Marcos on 1 September). **Assistant Professor.** Competitive salary. The position beginning in fall 2004 is for a Ph.D. in geography or a closely related field who specializes in remote sensing, preferably with excellent GIS skills as well. Must possess, or have the potential for, an outstanding and active record of research, publication, and grants. Requires a commitment to excellence in teaching both undergraduate and graduate courses.

Applications should include your curriculum vitae and a cover letter highlighting your research and teaching interests and experience. Please have three letters of reference sent directly to the department. Review of applications will begin on 6 October 2003.

The department currently has 29 faculty members, 509 undergraduate majors, 164 master's students, and 35 PhD students and offers a BA, BS, MS, Master of Applied Geography, and PhD in Geography with specializations in geographic information science, environmental geography, and geographic education. The Texas Center for Geographic Information Science is an integral part of the department. For more information about the department, please visit our Web site at www.geo.swt.edu.

San Marcos is located at the center of the burgeoning San Antonio-Austin Corridor yet still has a small-town atmosphere with a low cost of living and a pleasant climate.

Enrolling more than 25,000 students, Southwest Texas State University is an affirmative action, equal opportunity educational institution and as such does not discriminate because of race, color, creed or religion, sex, national origin, age, physical or mental handicaps, or status as a disabled or Vietnam era veteran. Southwest Texas State University is a member of the Texas State University System. SEP 03-128.

Apply: Lawrence Estaville, Chair, Department of Geography. Voice 512-245-2170. Fax 512-245-8353. Email le02@swt.edu.

***UTAH, SALT LAKE CITY 84112-9155.** University of Utah. The Department of Geography invites applications for **two tenure-track positions** at the **Assistant Professor** level starting July 2004. We are seeking candidates in the following two areas.

1) **Remote sensing specialist** with research interests in the **application of remote sensing to Earth system science**. The successful candidate will have a focused research direction in hydrology, biogeography, landscape analysis,

geomorphology and/or climate studies. Also desirable are strong skills in hyperspectral, LIDAR and/or microwave remote sensing.

2) **Human geographer** with research interests in **health hazards**, including spatial epidemiology, bioterrorism and/or spatial risk analysis. We will also consider candidates with interests in other types of natural and technological hazards. Also desirable are strong skills in GIS, geovisualization, geocomputation and/or spatial statistics.

For both positions, an active and vigorous research program and dedication to high quality teaching are expected.

The Department of Geography emphasizes scientific geography within the focus areas of urban/economic systems, Earth system science and geographic information science. The department offers bachelors, masters and PhD degrees in geography. The department is home to the Digitally Integrated Geographic Information Technologies (DIGIT) Laboratory, a state-of-the-art GIS/remote sensing facility, the Center for Natural and Technological Hazards (CNTH), the Environmental Change Observatory (ECO) and participates in the National Consortium for Remote Sensing in Transportation (NCRST). The department also administers a unique interdisciplinary Certificate Program in Geographic Information Science with the School of Computing.

The University of Utah is a comprehensive and diverse public institution located on the Wasatch Front urban corridor with easy access to research and recreational opportunities in the Rocky Mountains, Great Basin and the Colorado Plateau. Salt Lake City, home of the 2002 Winter Olympics, is a dynamic and "wired" metropolitan area with outstanding cultural and entertainment amenities, low cost of living, and a sunny, dry four-season climate. For more information on the Department of Geography, see <http://www.geog.utah.edu>.

Submit a letter of application including research and teaching interests, vitae, teaching evaluations (if available) and the names, addresses, phone numbers and email addresses of at least three referees by 26 September 2003. Applications received after the deadline may be considered until the position is filled. The University of Utah is an Equal Opportunity/Affirmative Action employer and encourages applications from women and minorities. The University of Utah provides reasonable accommodations for the known disabilities of applicants and employees. SEP 03-112.

Apply: Thomas Kontuly, Chair, University of Utah / Department of Geography / 260 S Central Campus Dr Room 270 / Salt Lake City

UT 84112-9155. Please identify whether you are applying for the remote sensing or hazards position.

***VERMONT, MIDDLEBURY 05753.** The National Institute for Technology and Liberal Education (NITLE) seeks a **program director** to provide leadership, support and coordination for the collaborative development of GIS capabilities for 81 liberal arts colleges. This is a two-year position with possibility for renewal, funded by a grant from The Andrew W. Mellon Foundation.

NITLE and its three affiliated regional technology centers serve as catalysts for innovation and collaboration as liberal arts colleges seek to make effective use of technology to enhance teaching, learning, scholarship, and information management. Spatial concepts and GIS tools have been identified by the colleges and the regional centers as important elements of liberal education, with relevance across the curriculum.

NITLE's GIS program director will:

- raise awareness of spatial thinking and analysis by identifying, facilitating and showcasing exemplary curricular projects;
- develop and coordinate opportunities for students, faculty and staff to acquire GIS expertise, including workshops, intensive summer programs, conferences, etc.;
- leverage GIS resources where they exist to develop collaborative, scalable and replicable models of curricular innovation;
- develop networks for collaboration and mutual support of GIS activities;
- negotiate favorable group pricing with software and data vendors;
- help to create processes for the aggregation and sharing of data resources;
- serve as a resource and consultant to the GIS point person on each campus, and to the staffs of the regional centers;
- develop proposals for support of collaborative projects that are beyond the scope of NITLE's current funding.

This position is based at the Center for Educational Technology in Middlebury, Vermont, but requires extensive travel to other centers and campuses served by NITLE.

Qualifications: MA or PhD in Geography preferred. Familiarity with liberal arts colleges preferred. Background in the concepts and uses of GIS for teaching and research. Experience with a variety of GIS software (e.g., ESRI and Idrisi applications).

Familiarity with a variety of computer platforms. Familiarity with techniques of GIS data development and management. Must have

excellent written and oral communication skills, proposal/grant writing experience. Must have excellent planning, organizational and facilitation skills. Must be committed to the development of collaborative, sustainable and interdisciplinary programs. SEP 03-109.

Apply to: Middlebury College; Human Resources; Service Building; Second Floor I, Middlebury, Vermont 05753. Voice 802-443-5465. Fax 802-443-2058.

***VIRGINIA, BLACKSBURG 24061.** The Department of Geography at Virginia Tech invites applications for two full-time, tenure-track positions at the **Assistant Professor** level, beginning in August 2004. The department seeks to hire:

Position 1: Medical Geographer. Individuals must have their PhD in Geography or closely related discipline by the time of appointment and research experience in medical geography. Preference will be given to those with research specialties in environmental health or epidemiology and who have the ability to apply geospatial techniques. Field experience is essential. Candidate must be able to teach undergraduate and graduate courses, including Introduction to Human Geography and Medical Geography. Evidence of an ability to develop a strong, externally funded research program and publication record is also essential.

Applicants should arrange for three letters of reference to be sent directly to the department. Apply to: Medical Geography Search Committee, Department of Geography (0115), Virginia Tech, Blacksburg, VA 24061.

Position 2: Physical Geographer. Individuals must have their PhD in Geography or closely related discipline by the time of appointment. Preference will be given to those with research specialties in biogeography and/or Holocene environments and who have the ability to apply geospatial techniques. We also prefer a field-based approach with research interests in the Southeastern United States, North American mountain regions, or the Neotropics. Candidate must be able to teach undergraduate and graduate courses in physical geography. Evidence of an ability to develop a strong, externally funded research program and publication record is also essential.

Applicants should arrange for three letters of reference to be sent directly to the department. Apply to: Physical Geography Search Committee, Department of Geography (0115), Virginia Tech, Blacksburg, VA 24061.

Applications for both positions should include a CV, sample publications, evaluations of teaching,

and a cover letter highlighting the applicant's teaching and research experiences and interests. Review of all applications will begin 1 December 2003, and continue until the positions are filled. SEP 03-126-3.

For more information about the Department of Geography at Virginia Tech see www.maj-bill.vt.edu/geog/index.html. Email geog@vt.edu. Virginia Tech is an Equal Opportunity Employer.

***WISCONSIN, KENOSHA 53140.** Carthage College. The Department of Geography seeks to fill a one-year **Visiting Assistant Professor** position. The Department seeks a broadly trained **Physical Geographer**. Initial teaching responsibilities will include introductory physical geography and other courses within the candidate's expertise. We welcome interests in a wide variety of geographic subfields. Qualifications: Ph.D. in geography or related field. ABDs will be considered. Useful qualifications the candidate may bring include (but are not limited to) an ability to integrate computer methods in instruction, actively support both the physical and human geography program, and other programs on campus.

Located on the shore of Lake Michigan, midway between Milwaukee and Chicago, Carthage offers quick urban access from the relaxed environment of a small city. The College was founded in 1847 and its curriculum is designed to promote critical thinking while challenging students to express themselves effectively through a variety of media. SEP 03-103.

Apply: Send application letter, vitae, statement of teaching philosophy, and list of references to Julio Rivera, Carthage College, 2001 Alford Park Drive, Kenosha, WI 53140. Voice 262-551-5846. Fax 262-551-6208. Email julio@carthage.edu. Applications will be reviewed until the position is filled.

INTERNATIONAL

***CANADA, ALBERTA, CALGARY T2N 1N4.** The B.Sc. Environmental Science Program at the University of Calgary invites applications for a tenure-track **Assistant Professor** position in **Geography**. We seek a candidate with research interests in the human-environment interface, including but not limited to human health, environmental management and policy. A clear ability to apply the scientific method in research and teaching is required. The ability to mentor undergraduate projects in GIS is an asset.

The appointment is to the B.Sc. Environmental Science Program, with the position based in

the Department of Geography. The Program is administered jointly by the Faculties of Science and Social Sciences, and has five areas of concentration including Biological Sciences, Chemistry, Geography and Social Sciences, Geology, and Physics. The successful candidate will be committed to undergraduate teaching, with an emphasis on interdisciplinary and inquiry-based learning linked to community issues (see <http://www.fp.ucalgary.ca/ENSC> and the University's Academic Plan at www.ucalgary.ca).

Qualifications include a Ph.D., preferably post-doctoral experience, and the ability to establish an active, externally-funded research program involving graduate students. A complete application package should include a curriculum vitae, a detailed description of proposed research, copies of not more than three representative publications, and a statement of teaching interests and philosophy. Candidates should also arrange to have three letters of reference mailed to the address below. SEP 03-120.

Apply: Chair, Geographer Search Committee, B.Sc. Environmental Science Program, University of Calgary, 2500 University Dr. N.W., Calgary, AB, Canada T2N 1N4. Voice 403-220-3127. Fax 403-210-8105. Inquiries can also be made to: ensc@ucalgary.ca. The closing date for applications is 30 October 2003. A start date of 1 January 2004 or 1 July 2004 is acceptable.

All qualified applicants are encouraged to apply; however, Canadians and permanent residents will be given priority. The University of Calgary respects, appreciates, and encourages diversity.

***CANADA, BRITISH COLUMBIA, BURNABY V5A 1S6.** The Department of Geography at Simon Fraser University seeks to appoint an **Assistant Professor** in the human geography of contemporary **Asia**, preferably **China**. All applicants should have a field-based research program and fluency in a major Asian language. The ideal candidate will be prepared to contribute to the Department's research and teaching expertise in the field of development, broadly defined.

This position is a tenure-track appointment starting 1 August 2004. Applicants must have a Ph.D., or be near completion, and show clear promise of excellence in research and effectiveness in teaching. Simon Fraser University is committed to employment equity and encourages applications from all qualified women and men, including visible minorities, aboriginal people and persons with disabilities. All qualified candidates are encouraged to apply; however, Canadian citizens and permanent residents will be given priority.

Applicants should forward a curriculum vitae, statement of interest, and sample of research writing to the address below. SEP 03-97.

Apply: Dr. Alex Clapp, Chair, Appointments Committee, Department of Geography, Simon Fraser University, Burnaby, British Columbia, Canada V5A 1S6. They should also arrange for three confidential letters of reference to be sent to the Department under separate cover. Consideration of applications will begin on 1 October 2003. For additional information see <http://www.sfu.ca/geography>. The position is subject to final budgetary approval.

***CANADA, BRITISH COLUMBIA, PRINCE GEORGE V2M 7C5.** The Resource Recreation/Tourism Program is accepting applications for **two** tenure-track positions at the **Assistant Professor** level. Anticipated start date - January 2004 (subject to budgetary approval). Doctoral degree in recreation, tourism or closely related field, with evidence or potential for excellence in scholarship, teaching and service, and active research program in topics relevant to the discipline are required. Specialized knowledge desired in one or more of the following areas: aboriginal tourism; marketing/entrepreneurship/community development in tourism; impacts of outdoor recreation/tourism; ecotourism; and outdoor recreation/tourism in resource management. Ability to apply GIS to one or more of these topical areas an asset. See www.unbc.ca/hr/jobs for additional job information, and www.unbc.ca/rrt/ for program information.

Please forward curriculum vitae and the names and addresses of three references (including telephone, fax, and email information), **quoting competition #FARR20-03** to the address below. SEP 03-117.

Apply: Dr. Deborah Poff, Vice-President Academic & Provost, University of Northern British Columbia, 3333 University Way, Prince George, B.C., V2N 4Z9. Fax 250-960-7300. Please direct inquiries to: Dr. Gail Fondahl, Chair of the Geography and Resource Recreation/Tourism Programs, at 250-960-5856; Email fondahlg@unbc.ca, Fax 250-960-6533. Deadline: 31 October 2003.

All qualified candidates are encouraged to apply; however, Canadians and permanent residents will be given priority. The University of Northern British Columbia is committed to employment equity and encourages applications from women, aboriginal peoples, persons with disabilities and members of visible minorities.

***CANADA, ONTARIO, OTTAWA K1S 5B6.** The Department of Geography and Environmental Studies at Carleton University seeks applicants for

a tenure-track position at the **Assistant Professor** level beginning 1 July 2004. The appointment is subject to budgetary approval. The research area of the position will be Northern Physical Geography. Preference will be given to applicants demonstrating research and teaching interests in the physical environment of Arctic or Subarctic Canada. Candidates should be able to teach undergraduate courses in microclimatology and physical hydrology. Candidates will be expected to develop an externally-funded field research program in northern Canada. SEP 03-108.

Complete details regarding application procedures are available at: www.carleton.ca/geography/geography/geo_jobs.html.

***CANADA, ONTARIO, TORONTO M3J 1P3.** York University - Applications are invited for a full-time, tenure-track position in the **Geography of International Development** at the **Assistant Professor** level. We are seeking a human geographer applying critical and/or feminist approaches to economic and social change in an international development context. Preference will be given to candidates with ongoing research interests in Asia, Latin America or the Caribbean, which will allow them to link with existing research centres at York. A Ph.D. is required at the time of appointment. We seek an individual who will develop a vigorous research programme and who is committed to high quality undergraduate and graduate education. Additional information on the Department can be obtained at www.yorku.ca/dept/geograph.

The position, to commence 1 July 2004, is subject to budgetary approval.

York University is an Affirmative Action Employer. The Affirmative Action Program can be found on York's website at <http://www.yorku.ca/acadjobs/index.htm> or a copy can be obtained by calling the affirmative action office at 416-736-5713.

All qualified candidates are encouraged to apply; however, Canadian citizens and Permanent Residents will be given priority. SEP 03-110a.

Candidates should send a curriculum vitae, a statement of research interests, and selected publications, and should arrange for three letters of reference to be sent to: Dr. J. Radford, Chair, Department of Geography, York University, 4700 Keele Street, Toronto, Ontario M3J 1P3.

Deadline for applications is 1 November 2003. Electronic applications will not be accepted.

***CANADA, ONTARIO, TORONTO M3J 1P3.** York University - Applications are invited for a full-time, tenure-track position in **Human Geography** at the **Assistant Professor** level. We are seeking a geographer with interests in political ecology and/or social theories of nature. We welcome applications from candidates applying critical or feminist approaches to the environment or working with indigenous peoples. A Ph.D. is required at the time of appointment. We seek an individual who will develop a vigorous research programme and who is committed to high quality undergraduate and graduate education. Additional information on the Department can be obtained at www.yorku.ca/dept/geograph.

The position, to commence 1 July 2004, is subject to budgetary approval.

York University is an Affirmative Action employer. The Affirmative Action Program can be found on York's website at <http://www.yorku.ca/acadjobs/index.htm> or a copy can be obtained by calling the affirmative action office at 416-736-5713.

All qualified candidates are encouraged to apply; however, Canadian Citizens and Permanent Residents will be given priority. SEP 03-110b.

Candidates should send a curriculum vitae, a statement of research interests, and selected publications, and should arrange for three letters of reference to be sent to: Dr. J. Radford, Chair, Department of Geography, York University, 4700 Keele Street, Toronto, Ontario M3J 1P3.

Deadline for applications is 1 November 2003. Electronic applications will not be accepted.

***CANADA, QUEBEC, MONTREAL H3A 2K6.** McGill University, Department of Geography. Applications are invited for a tenure-track position at the **Assistant Professor** level in **Development Geography**, beginning 1 June 2004. Applicants must possess a PhD by that date, and have demonstrated excellence in research, teaching and communication. Their research should show a strong grasp of development issues related to any one or more of environment, economy and society. The successful candidate will be expected to teach undergraduate and graduate courses and develop a vigorous research program, embracing graduate student supervision. Excellent opportunities exist for collaboration within the Department and other

units including the Centre for Developing Areas Studies and the McGill School of Environment. Information on McGill and the Department of Geography can be found at www.mcgill.ca and www.geog.mcgill.ca.

Salary will be commensurate with qualifications and experience.

McGill University is committed to equity in employment. Applications are encouraged from qualified women and men, members of visible and non-visible minorities, aboriginal people, and persons with disabilities. In accordance with Canadian immigration requirements, this advertisement is directed in the first instance to Canadian citizens and permanent residents of Canada.

Candidates should send their curriculum vitae, statements of teaching and research interests, any teaching evaluations, and up to three reprints to the address below. Confidential letters of recommendation should be sent by the candidate's three referees to the same address. Consideration of applications will start on 15 November 2003 and continue until the position is filled. SEP 03-95.

Apply: Dr. Gordon Ewing, Chair, Department of Geography, McGill University, 805 Sherbrooke St. West, Montreal, Quebec, Canada, H3A 2K6. Voice 514-398-4112. Fax 514-398-7437. Email chair@geog.mcgill.ca.

***TAIWAN, TAIPEI.** The Department of Geography at the National Taiwan Normal University invites applications for a tenure track position at the **Assistant Professor** (or higher) level. We seek two outstanding candidates (preferably under 45) who will contribute to the Department's teaching and research in the field: 1. **Physical Geography** or **Applied Geomorphology**. 2. **Climatology** or **Environmental Science**. The appointment will be effective on 1 August 2004. The deadline for receipt of applications is 31 October 2003. Each application should include a copy of Ph.D. certificate, a copy of personal ID, publications within the past five years, curriculum vitae, syllabi for intended teaching courses (four courses, each within 500 words). We encourage all qualified persons to apply. SEP 03-116.

Apply: Ms. Chen, Ron-Ron, Department of Geography, National Taiwan Normal University, 162 Ho-Ping East Rd. Sec. 1, Taipei, Taiwan. Fax (886) 2-23691770. Email t24016@cc.ntnu.edu.tw. ■

To view Jobs in Geography online, visit the Jobs/Careers section of the AAG website: www.aag.org.

Allen, John. *Lost Geographies of Power*. Malden, MA: Blackwell Publishing, 2003. 217 and 9 pp., \$29.95, ISBN 0-631-20729-5 (paper).

Bateman, Ian J., Andrew A. Lovett, and Julii S. Brainard. *Applied Environmental Economics: A GIS Approach to Cost-Benefit Analysis*. New York: Cambridge University Press, 2003. 335 and 21 pp., \$65.00, ISBN 0-521-80956-8.

Beesley, Kenneth B., Lisa Harrington, Brian Ilbery, and Hugh Millward, eds. *The New Countryside: Geographic Perspectives on Rural Change*. Brandon, Manitoba: Brandon University and St. Mary's University, 2003. 490 pp., \$48.00 (Canadian), ISBN 1-895397-75-8.

Bonta, Mark. *Seven Names for the Bellbird: Conservation Geography in Honduras*. College Station, TX: Texas A & M University Press, 2003. 231 and 12 pp., \$35.00, ISBN 1-58544-249-6.

Bullock, James M., Robert Kenward, Rosemary Hails, and the British Ecological Society. *Dispersal Ecology*. Malden, MA: Blackwell, 2002. 458 and 17 pp., \$64.95, ISBN 0-632-05877-3.

Clifford, Nicholas J., and Gill Valentine, eds. *Key Methods in Geography*. Thousand Oaks, CA: Sage Publications, 2003. 572 and 18 pp., n.p., ISBN 0-7619-7492-X (paper).

Doering, Otto C., Moshe C. Kress, Rebecca A. Pfeifer, J. C. Randolph, and Jane Southworth. *Effects of Climate Change and Variability on Agricultural Production Systems*. Norwell, MA: Kluwer, 2002. 275 and 15 pp., \$125.00, ISBN 1-4020-7028-4.

Goffart, Walter. *Historical Atlases: The First Three Hundred Years, 1570-1870*. Chicago: University of Chicago Press, 2003. 603 and 23 pp., \$65.00, ISBN 0-226-30071-4.

Johansen, Bruce E. *The Dirty Dozen: Toxic Chemicals and the Earth's Future*. Westport, CT: Praeger, 2003. 297 and 9 pp., \$49.95, ISBN 0-275-97702-1.

Leatherman, Stephen P. *Dr. Beach's Survival Guide*. New Haven, CT: Yale University Press, 2003. 106 and 12 pp., \$20.00 cloth, ISBN 0-300-09818-9.

Lo, Bobo. *Vladimir Putin and the Evolution of Russian Foreign Policy*. Malden, MA: Blackwell Publishing, and The Royal Institute of International Affairs, 2003. 165 and 9 pp., \$29.95, ISBN 1-4051-0300-0 (paper).

Lyons, Thomas P. *China Maritime Customs and China's Trade Statistics, 1859-1948*. Trumansburg, NY: Willow Creek Press, 2003. 171 and 8 pp., \$34.95, ISBN 0-9729147-5-7.

Murdoch, Jonathan, Philip Lowe, Robert Graves, Terry Marsden, and Neil Ward. *The Differentiated Countryside*. London and New York: Routledge, 2003. 181 and 8 pp., \$100.00, ISBN 1-857-28895-5.

Reed, Maureen. *Taking Stands: Gender and the Sustainability of Rural Communities*. Vancouver: University of British Columbia Press, 2003. 282 and 13 pp., \$85.00, ISBN 0-7748-1017-3 (cloth).

Roberts, J. Timmons, and Nikki D. Thanos. *Trouble in Paradise: Globalization and Environmental Crises in Latin America*. London and New York: Routledge, 2003. 285 and 17 pp., \$18.95, ISBN 0-415-92980-6.

Solomon, Daniel. *Global City Blues*. Washington, DC: Island Press, 2003. 253 and 15 pp., \$24.00, ISBN 1-55963-184-8 (cloth).

Thabit, Walter. *How East New York became a ghetto*. New York, NY: New York University Press, 2003. 304 and 15 pp., \$29.95, ISBN 0-8147-8266-3 (cloth).

Verstraete, Ginette, and Tim Cressell, eds. *Mobilizing Place, Placing Mobility: The Politics of Representation in a Globalizing World*. Amsterdam: Rodopi B.V., 2002. 195 pp., \$48.00, ISBN 90-420-1144-0. ■

Geography Awareness Week, 16-22 November 2003

GIS Day, 19 November

Geography Awareness Week and GIS Day are the time to focus attention on our discipline. Please join the geography departments, public agencies, and businesses across the country that plan to host special events. Send information about your events

to the AAG (gaia@aag.org) and we will note them on our website.

Geography Awareness Week buttons and career brochures are available from the AAG. See www.aag.org/Education/geo_aware_03.pdf for an order form. ■

2003 SEPTEMBER

3-5. Geography, Serving Society and the Environment, RGS-IBG Annual Conference. London, U.K., www.rgs.org/ACLondon2003.

5. 4th Annual Western Pennsylvania GIS Conference 2003. California, PA, www.cup.edu/liberalarts/earthscience/gis/.

15-18. NSGIC annual conference. Nashville, TN. Visit www.nsgis.org.

17-20. **AAG Pacific Coast Division Meeting.** Portland, OR. Contact apcg@pdx.edu.

18-21. Eastern Historical Geographers Association (EHGA) Meeting. Athens, OH, <http://jupiter.phy.ohiou.edu/Departments/Geography/ehga/>.

29-1 October. Geospatial Information and Technology Association (GITA) 12th Annual GIS for Oil and Gas Conference. Houston, TX, www.gita.org.

OCTOBER

2-4. **AAG Great Plains/Rocky Mountain Division Meeting.** Manhattan, KS, www.ksu.edu/geography/conf/confindex.htm.

2-4. Canadian Ethnic Studies Association (CESA) conference. Banff, Alberta, Canada, www.ucalgary.ca/CESA.

8-11. National Council for Geographic Education Annual Conference. Salt Lake City, UT. Contact ncge@jsucc.jsu.edu.

10-11. **AAG New England St. Lawrence Valley Division Meeting.** New Britain, CT, www.geography.ccsu.edu.

11-15. URISA Annual Conference. Atlanta, GA, www.urisa.org.

16-18. **AAG East Lakes and West Lakes Regional Division Meeting.** Kalamazoo, MI, www.wmich.edu/geography/eastlakes/.

23-25. **AAG Southwestern Division Meeting.** Stillwater, OK. Contact Brad Bays at bbays@okstate.edu.

23-26. 44th Annual Meeting of the Society For the History of Discoveries. New Orleans, LA. Contact Richard Francaviglia at francaviglia@uta.edu.

30-31. Adaptive Research and Governance in Climate Change Conference. Columbus, OH. Contact April Luginbuhl at luginbuhl.6@osu.edu.

31-1 November. **AAG Middle States Division Meeting.** Albany, NY. Contact John Pipkin at j.pipkin@albany.edu.

NOVEMBER

5-8 Applied Geography Conference, Colorado Springs, CO, www.applied-geog.org/html/call.htm.

18-21. CARIS 2003 Gateways in Geomatics Conference. St. Louis, MO, www.caris.com/caris2003.

23-25. **AAG Southeastern Division Meeting.** Charlotte, NC. Contact L. Allen James at ajames@gwm.sc.edu.

DECEMBER

6-10. American Geophysical Union (AGU) Fall Meeting. San Francisco, CA, www.agu.org/meetings.

9-13. 12th International Conference of Historical Geographers. Auckland, NZ, www.geog.auckland.ac.nz/ichg2003.

2004

6-8 February. Florida Society of Geographers annual meeting. Pensacola Beach, FL. Contact Klaus J. Meyer-Arendt at kjma@uwf.edu.

17-20 February. Symposium on Urban Cultures and Identities. Cologne, Germany. IGU Commission 30: The Cultural Approach in Geography, www.uni-koeln.de/ew-fak/geo/seiten/igu.htm.

11-13 March. Southern Regional Science Association 43rd Annual Meeting. New Orleans, LA. Contact Mark Partridge at mpartridge@stcloudstate.edu.

14-19 March. **AAG Centennial Meeting.** Philadelphia, PA. www.aag.org/AnnualMeetings/Centennialinfo.htm.

31 March-3 April. The National Institute of Justice's Mapping and Analysis for Public Safety (MAPS) Seventh Annual International Crime Mapping Research Conference. Boston, MA. Visit www.oip.usdoj.gov/nij/maps/conferences.html.

15-16 April. 35th Annual South Dakota State Geography Convention. Brookings, SD, www3.sdstate.edu/Academics/CollegeofArtsAndScience/Geography/Index.cfm.

25-28 April. GITA's Annual Conference 27. Seattle, WA, www.gita.org.

9-13. August. The 24th Annual ESRI International User Conference. San Diego, CA. Visit www.esri.com/uc.

15-20 August. The 30th Congress of the International Geographical Union. Glasgow, U.K., www.meetingmakers.co.uk/IGC-UK2004.

21-24 August. Newcastle-upon-Tyne, U.K. Post-IGC Symposium in Urban Morphology, www.let.rug.nl/isuf/.

2005

5-9 April. **AAG Annual Meeting.** Denver, CO, www.aag.org.

2006

7-11 March. **AAG Annual Meeting.** Chicago, IL, www.aag.org.

2007

16-21 April. **AAG Annual Meeting.** San Francisco, CA, www.aag.org. ■

Plan now for the AAG Centennial Meeting, 14-19 March 2004

Deadline for paper submissions is 9 October 2003

www.aag.org

MOVING? HAVE YOU RECENTLY MOVED?

To update your address or contact info, visit the AAG website (www.aag.org) or fax this entire page, or a copy, to 202-234-2744, or mail to the AAG office.

Name _____

Affiliation _____

Address _____

_____ Home Office

City _____ State _____ Zip _____

Telephone _____ Fax _____

Email _____

Association of American Geographers
1710 Sixteenth Street NW
Washington D.C. 20009-3198

Periodicals
postage paid
at
Washington,
DC