



2004  
CONFERENCE ON RACE  
ETHNICITY &  
PLACE

## Final Program

---

September 16-18, 2004  
Howard University Campus, Washington, DC





2004  
CONFERENCE ON RACE/ETHNICITY & PLACE

September 2004

Dear Conference Attendees:

On behalf of Howard University, Binghamton University, and the Association of American Geographers, it is a pleasure to welcome you to Washington, DC and the 2004 Conference on Race/ Ethnicity and Place.

An increasingly interconnected and global society brings critical issues of race, ethnicity and place to our collective attention. Increasingly, the concept of place provides an insightful and meaningful framework for understanding migration, cultural conflicts over space, place-based identities, changing ethnic and racial landscapes, urban renewal and neighborhood politics, spatial dimensions of health inequalities, institutional roles and racial/ethnic relations, and much more. As this conference demonstrates, scholars from geography and many other disciplines are advancing our understanding of the intersection of race, ethnicity and place. We are pleased to have the opportunity to engage in discussion with you on these issues, here on the beautiful Howard University campus, in an interdisciplinary setting that brings together researchers from so many fields.

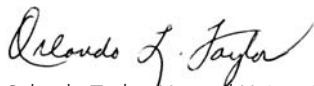
We hope you will enjoy the paper presentations, posters, keynote luncheons, plenary panels, and forums. We encourage you to take advantage of the many opportunities for informal learning and sharing with colleagues, presented by the evening reception, field trips to the historic LeDroit Park neighborhood, the newly opened City Museum, and the U-Street corridor.

Thank you for participating in this year's conference and making it possible through your attendance. We look forward to a successful conference.

Sincerely,



Doug Richardson, Association of American Geographers



Orlando Taylor, Howard University



John Frazier, Binghamton University

**The Race, Ethnicity and Place Conference is organized by Binghamton University,  
Howard University, and the Association of American Geographers**

## CONFERENCE AT A GLANCE

<b>Thursday, September 16</b>	
2:00 p.m.-5:00 p.m.	Pre-Conference Workshop: Mapping Racial/Ethnic Data on the Internet: A Primer (Digital Learning Classroom in Lounders Library, Room 116, Howard) Field Trip to City Museum (Meet at museum entrance on 801 K street for group admission discount, \$4.00)
3:30 p.m.-6:30 p.m.	Registration Open (Hamilton Crowne Plaza)
5:30-7:00 p.m.	Welcome Reception (Hamilton Crowne Plaza)
6:30 p.m.	Optional Dinner on your own at Bohemian Caverns (Depart from Hamilton Crowne Plaza Lobby at 6:30 p.m.)
8:00 p.m.	U-Street Corridor Evening Guided Tour (Depart from Bohemian Caverns, 2001 11th Street NW at 8:00 p.m.)
<b>Friday, September 17</b>	
8:00 a.m.-4:00 p.m.	Registration Open (Howard University, Blackburn Center, 2nd Floor)
8:30-10:00 a.m.	Concurrent Sessions
10:00-10:15 a.m.	Poster Display Break (Blackburn Center Hilltop Lounge)
10:15-11:45 a.m.	Concurrent Sessions / Poster Viewing
12:00-1:45 p.m.	Luncheon and Keynote Address " <i>Narratives of Change in Neighborhoods of Philadelphia.</i> " Rickie Sanders of Temple University (Blackburn Center East Ballroom)
2:00-3:30 p.m.	Plenary: Research Perspectives on Race/Ethnicity and Place. Rodney Green, Todd Rogers, Ruth Wilson Gilmore, and Vicky Lawson (Blackburn Center West Ballroom)
3:30-3:45 p.m.	Break
3:45-5:30 p.m.	Concurrent Sessions
<b>Saturday, September 18</b>	
8:00 a.m.-4:00 p.m.	Registration Open (Howard University, Blackburn Center, 2nd Floor)
8:30-10:00 a.m.	Concurrent Sessions / Mapping the Census: Presentations and Forum Field Trip to LeDroit Park (Depart from Blackburn Center. Meet at Registration Table.)
10:00-10:15 a.m.	Break
10:15-11:45 a.m.	Concurrent Sessions
12:00-1:30 p.m.	Luncheon and Keynote Address " <i>Driven from the Graves of Our Fathers: Comparative Emotional and Economic Responses to Native American Removal, Relocation and Termination Policies.</i> " Rennard Strickland of the University of Oregon (Blackburn Center East Ballroom)
1:45-3:15 p.m.	Concurrent Sessions
3:30-5:00 p.m.	Plenary Panel and Closing Discussion: "Race/Ethnicity and Place: Applications and Programs " John Frazier, Samuel Aryeetey-Attoh, Orlando Taylor, and Douglas Richardson. (Blackburn Center West Ballroom)

## THURSDAY

2:00 - 5:00 p.m.

### Pre-Conference Workshop

#### "Mapping Racial/Ethnic Data on the Internet: A Primer for Beginners"

Room: Digital Learning Classroom in Founders Library, Room 116, Howard University Campus

This Workshop will be a combination of short lectures and "hands-on" instruction in census geography and a special internet mapping program written in ArcIMS and available free on the web at <http://censusmap.binghamton.edu>. Users can map Census 2000 data at five different scales of geography and use overlays of racial/ethnic data on these maps. The workshop is directed at students and junior faculty who are interested in mapping census data but have little or no prior experience with Geographic Information Systems.

### Field Trip to the City Museum

*Meet at museum entrance on 801 K Street, 2 blocks south of the Mr. Vernon Square/7th Street-Convention Center Metro Station (yellow and green lines) and 2 blocks north of the Gallery Place-Chinatown Metro Station (red, yellow, and green lines.)*

With group admission discount, cost per person is \$4.00.

**Guides:** City Museum Staff

Learn the history of Washington, DC and its people at the aptly named City Museum. The story of DC's past comes alive through educational and exhibition galleries, a multi-media theatre, and a research library that is open to the public. As a project of the Historical Society of Washington, DC, City Museum invites you to "discover--or rediscover--a vibrant community where North and South, local and federal, urban and suburban, national and international, native and newcomer meet, with often surprising results.

3:30 - 6:30 p.m.

### Registration Open

(Hamilton Crowne Plaza)

5:30 - 7:00 p.m.

### Welcome Reception

(Hamilton Crowne Plaza)

8:00 p.m.

### U-Street Corridor Guided Walking Tour: An Evening of Food, History, and Jazz

*Main tour departs from Bohemian Caverns, 2001 11th Street NW at 8:00 p.m.*

(Optional Dinner on your own at Bohemian Caverns departs from Hamilton Crowne Plaza Lobby at 6:30 p.m.)

**Guides:** Edward W. Pinkard, Adjunct Professor, Howard University School of Architecture, and Ronald Wilson, Senior Research Associate, University of Michigan Inter-University Consortium for Political and Social Research

Join us this evening for a fun-filled guided walking tour through historic U Street. Absorb and celebrate the neighborhood's cultural history that is still evident today. Enjoy the architecture, memorials, and more that have been preserved and created to honor the achievements of many influential African Americans. End your evening by listening in on one of several live jazz artists playing in some of the very same clubs where artists such as Duke Ellington and Pearl Bailey once performed.

## FRIDAY

### 8:00 a.m. - 4:00 p.m. Registration Open

Room: Howard University, Blackburn Center, 2nd Floor

### 8:30 - 10:00 a.m. Concurrent Sessions

#### "Racial/Ethnic Identity and Place I"

Room: Auditorium

Organizer: Binghamton University

Chair: Ibipo Johnston-Anumonwo, State University of New York, Cortland

Speakers:

*"Placing Race in Mixed-Race Households: The Neighborhood Context of Parental Reporting of 'White' for Multiracial Children."* Steven R. Holloway, University of Georgia Department of Geography; Richard A. Wright, Dartmouth College Department of Geography; Mark Ellis, University of Washington Department of Geography; and Margaret Hudson, University of Georgia Department of Geography

*"Ethnic Identity, Motivation and Intergenerational Participation: Spatial Manifestations of an Ohio Greek Population."* Milton E. Harvey, Kent State University Department of Geography, and Stavros Constantinou, Ohio State University Department of Geography

*"Brazilians in the USA: Perspectives on 'Color' and 'Race', Ethnicity and Identity."* Alan P. Marcus, University of Massachusetts, Amherst Department of Geosciences

*"Ethnicity and Assimilation: Jamaicans in South Florida and Toronto."* Terry-Ann Jones, University of Miami Department of Geography and Regional Studies

#### "Across the Continuum from City to Suburbia to Rural and Back"

Room: Forum

Organizer: Program Committee

Chair: John Rennie Short, University of Maryland Department of Geography and Environmental Systems

Speakers:

*"Race and Ethnicity in Megalopolis, 1960-2000."* John Rennie Short, Department of Geography and Environmental Systems, University of Maryland, Baltimore County

*"Melting into Suburban Pot: Asian and Latino Immigrants' Emerging Suburban Identities in the DC Area."* Shanglin Chang, University of Maryland, College Park Department Of Natural Resource Sciences and Landscape Architecture

*"Fifty Years After Brown v. Board: The impact of suburban housing patterns on the desegregation of urban schools in America."* Anthony C. Stevenson, Rowan University Department of Geography

*"New Destinations for Hispanic Migrants: An Analysis of Eastern Kentucky."* Holly R. Barcus, Morehead State University Institute for Regional Analysis and Public Policy

#### "Land and Heritage: Tourism and Development Issues in Ethnic Communities"

Room: Reading Lounge

Organizer: Program Committee

Chair: Deborah Che, Western Michigan University Department of Geography

## FRIDAY cont.

8:30 - 10:00 a.m.

Speakers:

*"Native Lands and Best Use: Economic and Other Development Issues."* Edmund Zolnik, Binghamton University Department of Geography

*"Saginaw Chippewa Tribal Relations and the Social Production of Space in Isabella County, Michigan."* Bryan T. Swanson, Western Michigan University Department of Geography

*"Heritage Festivals in the Multicultural U.S: Balancing Representations of Ethnic Heritage with Tourist and Societal Expectations."* Deborah Che, Western Michigan University Department of Geography

*"Make way for the Park: The removal of Seneca Village from Central Park and the loss of this African-American community."* Joseph C. Blalock Jr., Ball State University Department of Landscape Architecture

### "Racial Spaces and Places in the United States"

Room: Gallery Lounge

Organizer: Binghamton University

Chair: Mark Reisinger, Binghamton University

Speakers:

*"Race in Commodity Exchange and Consumption: A Political-Economic Perspective."* Bobby M. Wilson, University of Alabama Department of Geography

*"Nightmarish Landscapes: The Orwellian World of Malcolm X."* James Tyner, Kent State University Department of Geography

*"A True Friend of His State: Jackson, Mississippi's Memorials to the Life and Work of Medgar Wiley Evers."* Elizabeth Hines, University of North Carolina at Wilmington Department of Earth Sciences

*"White Wash: Investigating the Role of White Privilege in the Production of the Landscape of the University of Georgia."* Joshua F. J. Inwood, University of Georgia Department of Geography

10:00 - Noon

### Poster Session

Room: Blackburn Center Hilltop Lounge

Poster presenters:

*"Perceptions Towards Urban Inequality and Employment Among Various Ethnic/Racial Groups in Selected Counties of Northern New Jersey."* Pin-Shuo (Ben) Liu and Monica Nyamwange, William Paterson University Department of Environmental Science and Geography

*"Children's Conceptualization of Heritage and the Question of Community."* Jin-Kyu Jung, SUNY at Buffalo Department of Geography,

*"An Analysis of Latino Migration Flows and Settlement Patterns in Three Connecticut Cities."* Lizandra Torres-Cuevas, Binghamton University Department of Geography,

*"The Evolution of Latino Communities in New York City: 1970 to 2000."* Keith Galligano, Binghamton University Department of Geography,

*"Black Women Come to Binghamton, New York: A Case Study in Poor Female Migration."* Karima Legette, Binghamton University McNair Program

*"Geographical and Racial and Ethnic Variations in Breast Cancer Incidence in New York State."* Andrew Fodor, Binghamton University Department of Geography

*"Racial and Ethnic Variations in Infant Mortality Rates for New York Counties."* Sara Davanzo, Binghamton University Department of Geography

*"East vs. West: A Comparative Analysis of The Spatial Distribution of Asian Americans and Amerasians in Two Urban Counties."* Bradley Gardener, Binghamton University Department of Geography

*"The family as a space of settlement: Chinese immigrants in small towns."* Ho Hon Leung, SUNY Oneonta Department of Sociology

*"Comparison of the Intake of Cruciferous and Dark Green Leafy Vegetables and Specified Socio-demographics Among African American Adult Females With and without Breast Cancer."* Lisa Marie Goodson, Howard University Department of Nutritional Sciences

*"Diasporic Landscapes: Latvian Symbols and Images from Riga to North America."* Kathleen Woodhouse, Kent State University

*"Modern Day Jezebels: Racialized Sexuality and the Images of Black Women in Contemporary Hip-Hop Videos."* Damie T. Horsey, SUNY College at Brockport Departments of Afro & African-American Studies and Sociology

*"Reflections of Residential Choice by Factorial Ecology and Cluster Analysis of Asian Americans in Washington D.C."* Jennifer Pomeroy, University of Maryland Department of Geography

*"Islam Versus Christianity in West Africa."* Mabaye Dia, Winthrop University Department of Geography

*"The Spatial Separation of Black Household Types in Five Counties."* Kris Marsh, University of Southern California Department of Sociology

*"Racial/Ethnic Disparities in Health Status: An Examination of Low Birth Weight in Suffolk and Monroe Counties, New York."* Harriet Aikens, Binghamton University

*"Racial Identity and Place Perceptions: A Case Study of Binghamton University Students."* Adewumni Alugbin, Binghamton University McNair Scholars Program; Trudy-Ann Hunter, Binghamton University McNair Scholars Program; and Ester Oforio, Binghamton University McNair Scholars Program

*"Regional and Ethnic Disparities Between the Aboriginal Population and Han Chinese in Taiwan."* Yulanda Y. Hwang, Binghamton University

*"Race, White Flight, and School Accountability."* Jason Dittmer, Georgia Southern University

*"Analysis and Detection of Health Disparities using Geostatistics and a Space-Time Information System."* Pierre Goovaerts, Biomedware, Inc.

*"Ethnicity and Fairness of Representation in Israel's Regional Councils."* Joost Gideon Berman, University of Illinois at Chicago, Urban Planning and Policy

*"The Salvadoran Population in the United States."* Carlos Restrepo, New York University, Wagner Graduate School of Public Service/Institute for Civil Infrastructure Systems

*"The Middle Passage Project: Space Age Explorations of Geography and African-American Heritage."* Douglas Reardon, Coppin State University, Department of History, Geography, and Global Studies

*"South Africa: transitions seen through gender."* Anneliese Vance and Jennifer Scully, SUNY, University at Buffalo, Department of Geography

*"Uncovering Segregation using Spatial Data Analysis and the Resulting Complications."* Ronald E. Wilson, National Institute of Justice, Mapping & Analysis for Public Safety Program

*"The Politics of Space: The Punjab Region of India and Pakistan."* Karenjot Bhangoo, George Mason University, The Institute for Conflict Analysis and Resolution

*"Demographics and Waste Transfer Stations in South Bronx, New York."* Zvia Segal Naphtali, Carlos E. Restrepo, and Rae Zimmerman, all of New York University, Wagner Graduate School of Public Service

*"Folk Houses as Symbols of Culture and Region in Mexico."* Scott S. Brown, Francis Marion University Department of Political Science and Geography

## FRIDAY cont.

10:00 - Noon

### Poster Session - continued

*"The Sami in Norway Today: Processes of De-Racialization and Re-Racialization."* Micheline van Riemsdijk, University of Colorado Department of Geography

*"Ethnicity and Place as Portrayed in Popular American Film"* Peter R. Galvin, Indiana University Southeast, Department of Geography

*"Fact, Lore and Mixed Blood in Navasota: An Historical Analysis of African-American Family in Reconstruction Era Texas."* Charlotte Y. King, DePaul University, Department of Women and Gender Studies

*"Hip Hop, Urban Labor Markets, and "The American Dream": A Study of Young Black Men in Philadelphia."* Decoteau J. Irby, Temple University, Department of Geography and Urban Studies

*"Environmental Change and Uncertainty in Coastal Communities of Northern Honduras."* Catherine Hoover-Castañeda, University of Texas at Austin & Shaw Environmental, Inc.

*"The Segregation of Chicago."* Charles Patton, DePaul University

*"A Comparison of the Urban Forest and Demographic Patterns, Washington, DC."* Holli Howard, and Michael W. Parsons both of Casey Trees

*"Evolving Significance at 1106 U Street."* Erica Schultz, University of Maryland, Graduate Program in Historic Preservation

*"Placing Hate Crimes: Matthew Shepard and the dragging death."* Dereka Rushbrook, University of Arizona

*"Not Race, Nor Class African American Residential Segregation in Broome County, NY."* Nathaniel Wright, Binghamton University

10:15 - 11:45 a.m.

### Concurrent Sessions

#### PANEL: "Federal Perspectives on Geographic Research Needs"

Room: Auditorium

Organizer: Toby Moore, US Department of Justice

Chair: Toby Moore, U.S. Department of Justice

Speakers:

Lee Swartz, U.S. Department of State

Diane T. Thompson, Department of Housing and Urban Development

John Cromartie, U.S. Department of Agriculture Economic Research Department

Mario Gomez-Lopez, U.S. Department of Justice Civil Rights Division

#### "Racial/ Ethnic Identity and Place II"

Room: Forum

Organizer: Binghamton University

Chair: Milton E. Harvey, Kent State University

Speakers:

*"Racial Identity and Assessment of Place in a College Town."* Cynthia Adom, Clark University, and John W. Frazier, Binghamton University Department of Geography

*"A Patchwork Quilt: Perceptions of Neighborhoods Among African American and Latino Children in Buffalo, N. Y."* Meghan Cope, SUNY-Buffalo

*"Got Koko? Hawaiian Racial Identity and Multiracial Diversity."* Shawn Malia Kana'iaupuni and Nolan J. Malone, Kamehameha Schools, Honolulu, Hawaii

*"The Racialization of African Students in the United States."* Susan E. Hume, Southern Illinois University Department of Geography

## **"The Roles, Relationships and Responses of Public and Private Institutions"**

Room: Reading Lounge

Organizer: Program Committee

Chair: Terrolyn P. Carter, Howard University Alliances for Graduate Education and the Professoriate

Speakers:

*"The Racial and Ethnic Minority Disparities Project in Rhode Island."* Veronica Ouma, Brown University Center for the Study of Race and Ethnicity in America

*"Offices of Latino Affairs: State Initiatives Addressing the Intersection of Race/Ethnicity and Place in the United States."* Christine Thurlow Brenner, Rutgers University Department of Public Policy and Administration, and Irasema Coronado, University of Texas at El Paso Department of Political Science

*"Social Capital Relationships and community development projects at four 1890 land-grant institutions in their local communities."* Karla M. McLucas, University of Missouri-Columbia Department of Rural Sociology "

*"Privileged Places: Race, Uneven Development and the Geography of Opportunity in Urban America."* Gregory D. Squires and Charis E. Kubrin, George Washington University Department of Sociology

## **"Race, Ethnicity and Community: Conflict and Change in Evolving Multiethnic Communities"**

Room: Gallery Lounge

Organizer: Binghamton University

Chair: James P. Allen, California State University at Northridge

Speakers:

*"Little Tokyo: Creating a 'Place' Under Harsh Realities."* James M. Smith, Towson University Department of Geography

*"Racialized Assimilation: Assimilation Theory and Immigration Integration."* Wei Li, Arizona State University Asian Pacific American Studies Program, Department of Geography

*"Collectivity, Cooperation and Conflict in America's Multiethnic Suburbs."* Emily Skop, The University of Texas at Austin Department of Geography

*"Kikuyus vs. Luos: Ethnic Conflict in Mathare 4 A Housing Project, Nairobi, Kenya."* Petronella Muraya, Howard University Department of History/Geography

**12:00 - 1:45 p.m.**

## **Luncheon and Keynote Address**

Room: Blackburn Center East Ballroom

**Welcome.** Orlando Taylor, Dean of the Graduate School, Howard University and Richard A. English, Interim Provost and Chief Academic Officer, Howard University

**Introduction.** Terrolyn Carter, Program Manager, Alliances for Graduate Education and the Professoriate, Howard University Graduate School

*"Narratives of Change in Neighborhoods of Philadelphia."* Rickie Sanders, Temple University Department of Geography/Urban Studies

## FRIDAY cont.

2:00 - 3:30 p.m.

### Plenary Panel

#### "Research Perspectives on Race/Ethnicity and Place"

Room: Blackburn Center West Ballroom

Chair: Douglas Richardson, Executive Director, Association of American Geographers

Speakers:

*"HOPE VI in Washington, D.C.: People versus Places and Community Development."* Rodney D. Green, Howard University Center for Urban Progress

*"Ethnicity and Place: The Role of Geographic Information Analysis."* Todd Rogers, Environmental Research Systems Institute

*"Profiling Alienated Labor: Racism, Externalities, and Re-Partitioned Geographies."* Ruth Wilson Gilmore, University of Southern California Department of Geography and American Studies & Ethnicity

*"Geographies of Race and Poverty in the American Northwest."* Vicky Lawson, University of Washington Department of Geography

3:30 - 3:45 p.m.

### Break

3:45 - 5:30 p.m.

### Concurrent Sessions

#### Mapping the Census: Presentations and Forum

Room: 150/148

*"Race and Space: Using Census Bureau Data to Visualize Race in Geographic Context."* Darryl Cohen and Nicholas Jones, U.S. Department of Commerce, Bureau of Census

*"Linguistic Tools for Race/Ethnicity and Place Research: the MLA Language Map."* David Goldberg, Modern Language Association

*"Mapping Racial/Ethnic Data on the Internet."* Kevin Heard, Binghamton University Department of Geography

Discussion and Audience Participation.

#### "The Roles of Institutions in Persistent and Emerging Racial/Ethnic Equity Problems"

Room: Auditorium

Organizer: Binghamton University

Chair: Eugene Tettey-Fio, Binghamton University

Speakers:

*"The Racial Geography of Predatory and Subprime Lending in Akron, Ohio."* David Kaplan, Kent State University Department of Geography

*"Concentrated Poverty, Race, and Mortgage Lending: Implications for Anti-Predatory Lending Legislation."* Joe T. Darden, Michigan State University Department of Geography

*"Race, Location and Access to Employment in Buffalo, N.Y."* Ibipo Johnston-Anumonwo, SUNY-Cortland Department of Geography

*"Credit Outcomes: The Importance of Race, Family Background and Urban Location."* Charles L. Betsey, Howard University Department of Economics

*"Public Policy Impacts on School Desegregation."* John Logan, Lewis Mumford Center for Comparative Urban and Regional Research and the Center for Social and Demographic Analysis at University at Albany, SUNY; Deirdre Oakley, Northern Illinois University; and Jacob Stowell, University at Albany

## **"Methodological Considerations in Racial/Ethnic Geographic Research"**

Room: Forum

Organizer: Binghamton University

Chair: David A. Padgett, Tennessee State University

Speakers:

*"Cartographic and Methodological Challenges in Mapping Changing Urban 'Ethnic Geologies.'"* Lucius S. Willis, Binghamton University Department of Geography and Stan Brunn, University of Kentucky Department of Geography

*"Measuring the Spatial Extent of Local Segregation: Exploring Local Variability."* David Wong, Earth Systems and GeoInformation Sciences School of Computational Sciences George Mason University

*"Geographic Information Systems: Revealing Public Health Inequalities in African American Communities."* Chuck Croner, NCHS/Centers for Disease Control and Prevention

*"Misuse of the 'Neighborhood Model' in Voting Rights and the Danger of the 'Location Centric Approach' for Policy Inputs."* Toby H. Moore, U.S. Department of Justice

*"GIS and Service Learning in Assessing the Impacts of Rapid Urban Growth Upon Nashville's African American Communities."* David Padgett, Tennessee State University Department of History, Geography and Political Science

## **"Intersections of Race, Ethnicity and Class in Employment, the Workplace, and the Economy"**

Room: Reading Lounge

Organizer: Program Committee

Chair: Emily Skop, The University of Texas at Austin

Speakers:

*"Public Housing to Public Art: Reassessing Lexington Kentucky's Dynamic Doors project."* Michael E. Crutcher Jr., University of Kentucky Department of Geography

*"The racialized hierarchy of belonging: Navigating the contested workplace."* Meredith A. Reitman, University of Wisconsin, Milwaukee Department of Geography

*"Effects of Residential Locations on Ethnic Labor Market Concentration: A Case Study of the San Francisco CMSA."* Qingfang Wang, University of Georgia Department of Geography,

*"Racial Discrimination in Mortgage Lending."* Emily C. Blank, Howard University Department of Economics; Padma Venkatachalam, Howard University Center for Urban Progress; Lawrence McNeil, Howard University; and Rodney Green, Howard University Department of Economics

*"Redlining Black Neighborhoods in Milwaukee: Evidence Using Spatial Statistical Modeling."* Kyuwon Park, University of Wisconsin-Milwaukee Department of Geography

## **"International Dimensions of Racial/Ethnic Identities"**

Room: Gallery Lounge

Organizer: Program Committee

Chair: Florence Bonner, Howard University, Department of Sociology & Anthropology

Speakers:

*"Landmarks Of Education For Ethnic Minorities In Post-Communist Romania."* Georgeta Stoian Connor, University of Georgia Department of Geography

*"Divided Loyalty: Urban House vs. Rural Home and the Challenge of Urban Development in Kenya."* Kefa M. Otiso, Bowling Green State University Department of Geography

**FRIDAY cont.**

**3:45 - 5:30 p.m.**

**Concurrent Sessions - continued**

*"Class and racial identities among second-generation Ethiopian immigrants in Israeli neighborhoods."* Nir Cohen, University of Arizona in Tucson Department of Geography & Regional Development

*"Constructing Racism in Sydney, Australia's Largest Ethnicity."* Jim Forrest, Macquarie University Department of Human Geography and Kevin Dunn, University of New South Wales Faculty of the Built Environment

*"An analysis of desegregation and ethnic diversity changes in post Apartheid Tshwane (Pretoria), South Africa."* Julia Maxted, University of Pretoria South Africa Department of Geography, Geoinformatics and Meteorology

**SATURDAY**

**8:00 - 4:00 a.m.**

**Registration Open**

Room: Howard University, Blackburn Center, 2nd Floor

**8:30 - 10:00 a.m.**

**The LeDroit Park Neighborhood Tour:  
 A Historic African American Residential Area**

*Meet at Registration Desk, Blackburn Center*

**Guides:** Alice Aughtry, LeDroit Park resident and Chair, Robert & Mary Church Terrell House and LeDroit Park Museum & Cultural Center, Former President, LeDroit Park Civic Association, and Ozoemena S. Nnaji, graduate student, Howard University.

LeDroit Park is a Category II landmark of the National Capital, a small unified subdivision built during the 1870's that retains much of the scale and character and most of the architecture it had at the turn of the century. For many years the home of a number of prominent Black citizens, since its inception LeDroit Park has been closely linked to Howard University to its immediate north. Come explore this historic neighborhood and learn about its fascinating past and its present-day revitalization, catalyzed by substantial investments by Howard University, Fannie Mae, and the Fannie Mae Foundation.

**Concurrent Sessions**

**"The Impact of Emerging U. S. Latino Settlements in Places Outside of Megalopolis"**

Room: Auditorium

**Organizer:** Binghamton University

**Chair:** Seth Marcus, U. S. Department of Housing and Urban Development

**Speakers:**

*"Changing Spatial Patterns of Ethnic and Immigrant Groups in San Antonio, 1990- 2000."* Richard C. Jones and Shannon Crum both of University of Texas at San Antonio Department of Political Science and Geography

*"Black, White and Hispanic: Transitioning Ethnic Geographies in a New South City."* Heather A. Smith, University of North Carolina - Charlotte Department of Geography

*"Place Utility in the Texas Great Plains: Anglo and Latino Discordance, 1970-2004."* Lawrence Estaville, Edris Montalvo, and Brock Brown all of Texas State University, San Marcos Department of Geography

*"Latino Settlement and Resettlement Down the U.S. Urban Hierarchy: An Examination of Southeastern Pennsylvania."* Mark Reisinger, Eugene Tettey-Fio, and John W. Frazier all of Binghamton University Department of Geography

## **"Race, the Digital Divide and Geospatial Technologies"**

Room: Forum

Organizer: Program Committee

Chair: Monica Nyamwange, William Patterson University Department of Environmental Science and Geography

Speakers:

*"Removing the 'Face-to-Face': Race, Ethnicity and the Virtual Classroom."* Ines M. Miyares, Hunter College Department of Geography

*"Revisiting the Digital Divide: Race, Region and the Everyday Uses of Internet Technologies."* Jayajit Chakraborty, University of South Florida Department of Geography and Martin Bosman, University of South Florida Department of Geography

*"Race, Gender, and Place: Reconceptualizing the 'Digital Divide' from the Perspective of Poor Women's Economic Empowerment."* Melissa R. Gilbert and Michele Masucci, Temple University Department of Geography and Urban Studies

*"Universities/Community Partnerships, Regional Development, Neighborhood Change and Race."* Harley Etienne, Cornell University, Department of City and Regional Planning

## **"Race and the Legal and Criminal Justice Systems"**

Room: Reading Lounge

Organizer: Program Committee

Chair: Ronald E. Wilson, National Institute of Justice

Speakers:

*"Placing Police: Spatial Strategies of African Americans in Buffalo, New York."* Jacqueline Housel, SUNY at Buffalo Department of Geography

*"Preventing Homicide In North Lawndale, Chicago."* Barry Weisberg, University of Illinois at Chicago Department of Criminal Justice, Violence Prevention Peace Promotion Strategy (VPPPS)

*"Murder, Race, and Place: The Racialization of Space in Athens, GA."* Robert Yarbrough, Christopher M. Smith, and Joshua F. Inwood all of University of Georgia Department of Geography

*"Scale and Racial Segregation in Affirmative Action Law."* Benjamin Forrest, Dartmouth College Department of Geography

## **"Visualizing and Characterizing Race/Ethnicity and Place: Illustrated Papers"**

Room: Gallery Lounge

Organizer: Program Committee

Chair: Patricia Solís, Association of American Geographers

Speakers:

*"Black Identity and Well Being: Untangling Race and Ethnicity."* Bruce Ormond Grant, Howard University Department of African Studies

*"Regional and Ethnic Differentials in Child Malnutrition in Ghana."* Eric K. Aikins, Binghamton University Department of Geography

*"A Demographic Characterization of Aboriginal Canadians."* James C. Saku, Frostburg State University Department of Geography

**SATURDAY cont.**

**8:30 - 10:00 a.m. Concurrent Sessions - continued**

*"Sacred Spaces of Oriente Cuba."* Jualynne E. Dodson, Michigan State University Department of Religious Studies

*"Bodies In and Out of Place: Local Readings of Displaced Bodies within a Low-Income Residential Area of Cairo."* Hatem Ezzat Nabih, Helwan University Department of Architecture, Cairo, Egypt, and Debra A. Budiani, Michigan State University Department of Anthropology

*"The Effect of Immigration on Residential Segregation in U.S. Metropolitan Areas, 2000."* John Iceland, University of Maryland Department of Sociology

*"Tracking Race, Ethnicity and Social Economic Status Using Web-based GIS Maps."* Rudolph Wilson, Norfolk State University Department of Political Science

**10:00-10:15 a.m. Break**

**10:15 - 11:45 a.m. Concurrent Sessions**

**"Creating Racial/Ethnic Places: The Roles of Identity and Community"**

Room: Auditorium

Organizer: Binghamton University

Chair: Wei Li, Arizona State University

Speakers:

*"Little Ethiopia: Creating Ethnic Space in Multiethnic Cities."* Elizabeth Chacko, George Washington University Department of Geography and International Affairs and Ivan Cheung, George Washington University Department of Geography

*"The New African Americans: Liberians Of War in Minnesota."* Earl Scott, University of Minnesota Department of African American & African Studies

*"West Indian Immigration to the United States."* Thomas D. Boswell, University of Miami Department of Geography; Terry Ann Jones; and Damion Dunn

*"The Geography of Whiteness: Russian and Ukrainian 'Coalitions of Color' in the Pacific Northwest."* Susan W. Hardwick, University of Oregon Department of Geography

**"Big City Revitalization/Gentrification: Cases from New York, Chicago, Philadelphia, Washington DC, and Seattle Neighborhoods"**

Room: Forum

Organizer: Program Committee

Chair: Rodney Green, Howard University, Center for Urban Progress

Speakers:

*"Stuck in place? 'Ghetto' productions in a globalizing city and social constructions of young women of color."* Caitlin Cahill, CUNY Graduate Center, Department of Environmental Psychology

*"From DC to the CD: Historically black neighborhoods and the professionalization of the inner-city in Washington and Seattle."* Jonathan Glick, University of Washington Department of Geography

*"Creating Ethnic Identity Inhabiting the Inner City Landscape."* Baldev Lamba, Temple University, Ambler College, Department Of Landscape Architecture and Horticulture

*"Racial Uplift? Intra-Racial Class Conflict and the Economic Revitalization of Harlem and Bronzeville."* Derek Hyra, University of Chicago Department of Sociology

## "Health Disparities: The Significance of Race, Class and Environmental Pollution"

Room: Reading Lounge

Organizer: Binghamton University

Chair: Florence M. Margai, Binghamton University Department of Geography

Speakers:

*"Racial Disparities in Low Birth Weight and Other Reproductive Health Outcomes."* Sue C. Grady, University at Albany Department of Epidemiology

*"Racial Disparities in Health Outcomes in Texas: HIV/AIDS and Tuberculosis Vulnerability."* Joseph Oppong, University of North Texas Department of Geography

*"The Geographic Distribution of HIV/AIDS in the District of Columbia."* Padma Venkatachalam, Howard University Center for Urban Progress

*"Variations in Neighborhood Exposure to Lead and Patterns of Learning Disabilities Among School-Age Children."* Florence M. Margai, Binghamton University Department of Geography

## "MLK Streets: At the Intersection of Race, Place, and Memory"

Room: Gallery Lounge

Organizer: Derek H. Alderman, East Carolina University Department of Geography

Chair: Derek H. Alderman, East Carolina University Department of Geography

Speakers:

*"Along Martin Luther King: Travels on Black America's Main Street."* Jonathan Tilove, Newhouse News Service

*"Of Bridges or Boundaries? An Analysis of Non-Residential Establishments on Streets Named in Honor of Martin Luther King, Jr."* Matthew L. Mitchelson, East Carolina University Department of Geography

*"The Political Roadblocks to Naming a Street after Martin Luther King, Jr.: Observations from a Community Activist."* Bernita Sims, City Council of High Point, NC

*"Martin Luther King, Street Naming, and the Scaling of Memory: Struggles within the African-American Community."* Derek H. Alderman, East Carolina University Department of Geography

**12:00 - 1:30 p.m.**

## Luncheon and Keynote Address

Room: Blackburn Center East Ballroom

Introduction. Orlando Taylor, Dean, Graduate School, Howard University

*"Driven from the Graves of Our Fathers: Comparative Emotional and Economic Responses to Native American Removal, Relocation and Termination Policies."* Rennard Strickland, Philip H. Knight Professor of Law, University of Oregon School of Law, (co-sponsored by the Association of American Law Schools)

**1:30 - 1:45 p.m.**

## Break

**1:45 - 3:15 p.m.**

## Concurrent Sessions

### "The Changing and Persistent Landscapes of Race and Ethnicity in the Nation's Capital Region"

Room: Auditorium

Organizer: Binghamton University

Chair: Joe T. Darden, Michigan State University Department of Geography

Speakers:

*"Placing Transnational Migration: The Sociospatial Networks of Bolivians in the United States."* Marie Price, George Washington University Department of Geography and International Affairs,

**SATURDAY cont.**

1:45 - 3:15 p.m.

**Concurrent Sessions - continued**

*"Metropolitan Immigration Trends: Washington, D.C. in Context."* Audrey Singer, The Brookings Institution

*"A Spatial Analysis of Crime in Washington, D.C.: 1990 and 2000."* DeWitt Davis, University of the District of Columbia Department of Urban Affairs

*"The Economic Status of Immigrant Ethnic Enclaves."* James P. Allen, California State University at Northridge Department of Geography, and Eugene Turner, California State University at Northridge Department of Geography, Social & Behavioral Sciences

**"Changing Race/Ethnicity and the Nature of New American Places"**

Room: Forum

Organizer: Binghamton University

Chair: David Kaplan, Kent State University Department of Geography

Speakers:

*"An Explanation of Differentials in Economic Status Among Native-Born and Immigrants in the United States: The Case of Patterson, N. J."* Thomas Owusu, William Patterson University Department of Geography

*"Racial/Ethnic Clustering at an Intra-Urban Scale: Columbus Ohio, SMA, 1990 and 2000."* Lawrence A. Brown, Ohio State University Department of Geography, and Su-Yeul Chung, Ohio State University Department of Psychiatry

*"Becoming Middle Class in Louisville - The Place-Time Trajectory of Recent Immigrants."* Arthur W. Dakan, University of Louisville Department of Geography and Geosciences

*"Public Housing and the Geography of Race: A Spatial Analysis of Section 8 Housing in Grand Rapids, MI."* James J. Biles, Western Michigan University Department of Geography and Larry Fishell, Western Michigan University Department of Geography

**"Symbolic and Spatial Representations of Race and 'Whiteness' "**

Room: Reading Lounge

Organizer: Program Committee

Chair: Richard H. Schein, University of Kentucky Department of Geography

Speakers:

*"Racialized Landscapes."* Richard H. Schein, University of Kentucky Department of Geography

*"Latino Migration to the US South and the Changing Politics of Race and Region."* Jamie Winders, Syracuse University Department of Geography

*"A White State? Contested Narratives of Race, Ethnicity, and Place in Vermont, USA."* Robert Vanderbeck, University of Vermont Department of Geography

*"Civil War versus Civil Rights: Race and the Contested Meanings of the Confederate Battle Flag in the American South."* Jonathan Leib, Florida State University Department of Geography, and Gerald Webster, University of Alabama Department of Geography

## **"Environmental Justice: Discourse and Practice"**

Room: Gallery Lounge

Organizer: Program Committee

Chair: Carolyn Finney, Clark University Graduate School of Geography

Speakers:

*"Mr. Audubon was a Brotha': African-Americans, Environmental Narratives and Place."* Carolyn Finney, Clark University Graduate School of Geography

*"The Chicken or Egg: An Empirical Analysis of Environmentally Noxious Facilities and Racial/Ethnic Neighborhood Characteristics."* Burrell E. Montz, Binghamton University Department of Environmental Studies

*"Environmental Health and Justice Implications of Industrial Zoning Changes in New York City: A Case Study in 'Expulsive Zoning.'" Juliaana Astrud Maantay, Lehman College/City University of New York (CUNY) Department of Environmental, Geographic, and Geologic Sciences*

**3:30 - 3:15 p.m.**

**Break**

**3:30 - 5:00 p.m.**

## **Plenary Panel and Closing Discussion**

### **"Race/Ethnicity and Place: Applications and Programs"**

Room: Blackburn Center West Ballroom

Chair: Patricia Solís, Deputy Director, Association of American Geographers

Speakers:

*"Race/Ethnicity and Place: Institutional Challenges to the Integration of U. S. Geography."* John Frazier, Binghamton University Department of Geography

*"Regional Stewardship: How Universities Contribute to the Socioeconomic Well-being of a Place."* Samuel Aryeetey-Attoh, University of Toledo Department of Geography and Planning

*"Race/Ethnicity and Place at Howard University: An Overview."* Orlando Taylor, Vice Provost for University Research and Dean of the Graduate School, Howard University

*"Building Partnerships for Diversity."* Doug Richardson, Executive Director, Association of American Geographers

**The Conference Organizers would like to acknowledge the following individuals  
for their help with this event:**

Robert Andelman

Gwen Bethea

Terry Carter

Elizabeth Chacko

John Frazier

Emmanuel Kobla Glakpe

Megan Handshu

Kevin Heard

Heather Heimbuch

Akesha Horton

Stephanie Johnson

Oscar Larson

Florence Margai

Katie McGraw

Megan Nortrup

Wayne Patterson

Doug Richardson

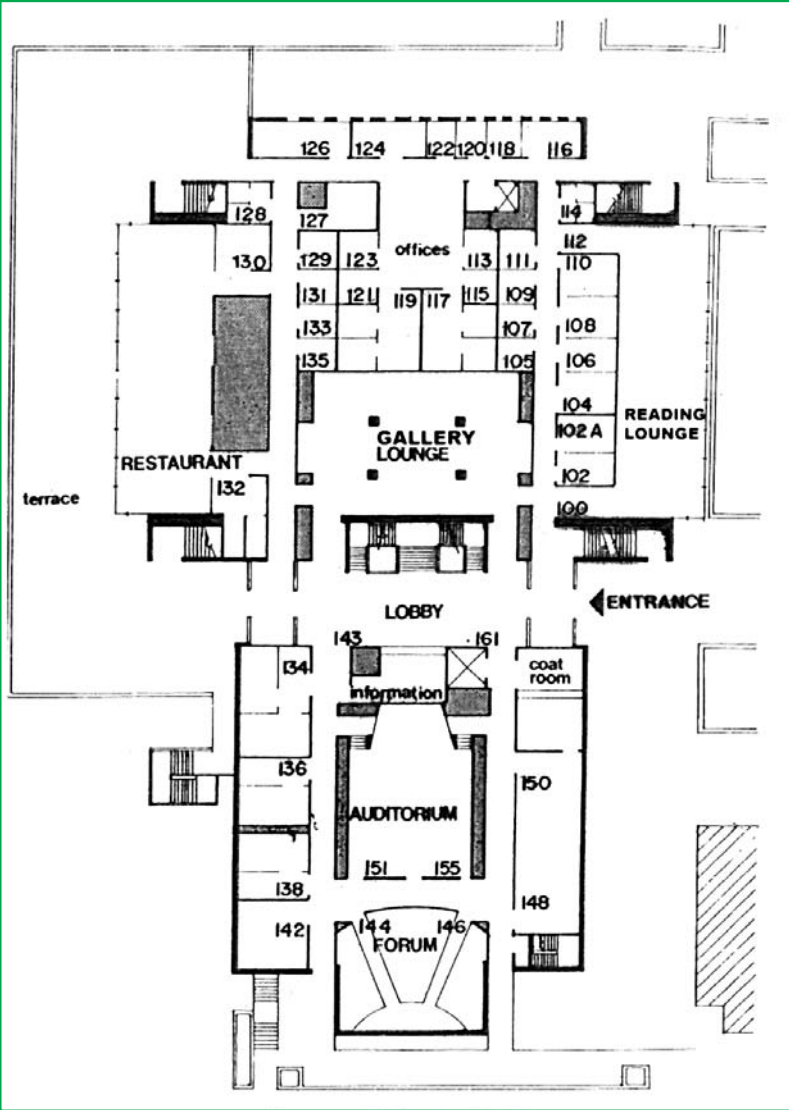
Todd Rogers

Patricia Solís

Orlando Taylor

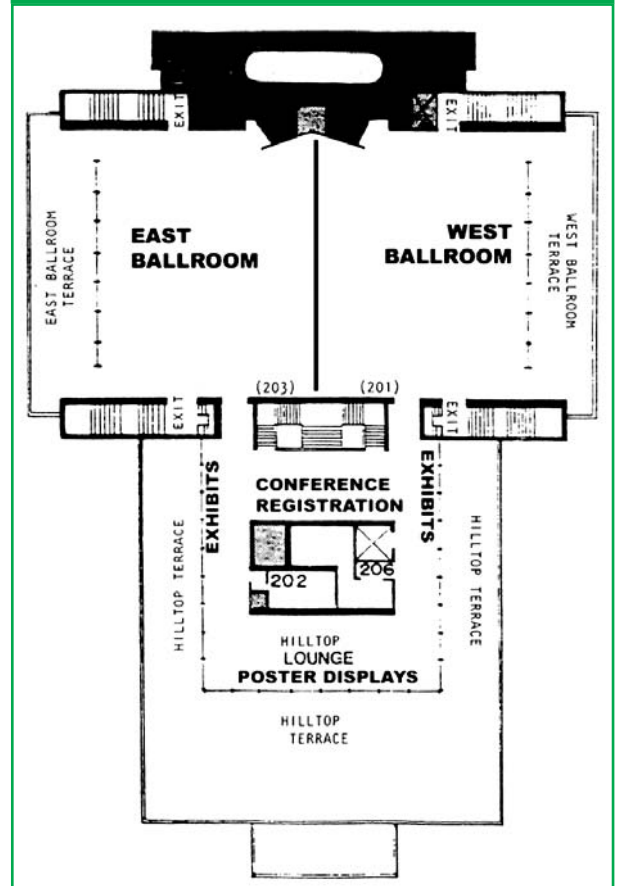
Eugene Tettey-Fio

# FIRST FLOOR MAP



**September 16-18, 2004**  
**Howard University Campus,**  
**Washington, DC**

# SECOND FLOOR MAP



## RACE/ETHNICITY AND PLACE CONFERENCE ORGANIZERS:



### Supporters:

---



### Exhibitors:

---

